

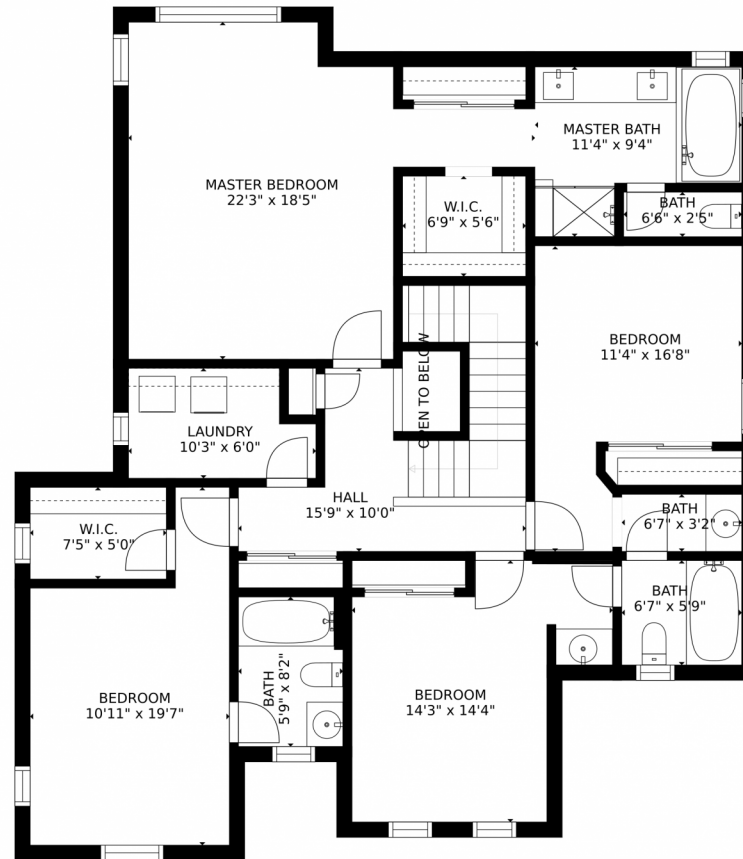
GROSS INTERNAL AREA
FLOOR 1: 1027 sq. ft. FLOOR 2: 1151 sq. ft.
FLOOR 3: 1385 sq. ft. EXCLUDED AREAS:
PATIO: 1555 sq. ft. PORCH: 38 sq. ft.
GARAGE: 599 sq. ft.
TOTAL: 3563 sq. ft.
SIZES AND DIMENSIONS ARE APPROXIMATE, ACTUAL MAY VARY.

Disclaimer: Sizes and Dimensions are Approximate, Actual May Vary.



Paul D. Andrews
720-270-1306
andrews.realtor@gmail.com
<https://www.greaterdenverhomesite.com/paul-andrews/>





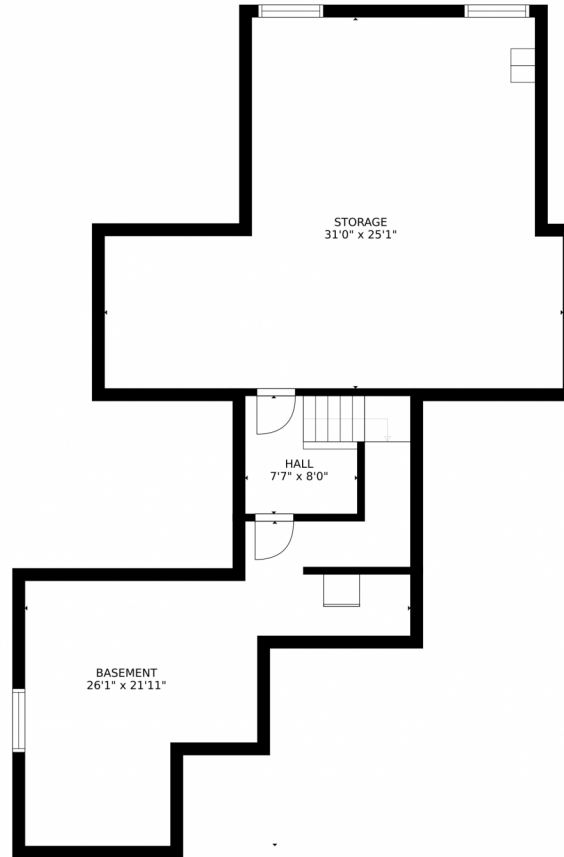
GROSS INTERNAL AREA
FLOOR 1: 1027 sq. ft. FLOOR 2: 1151 sq. ft.
FLOOR 3: 1385 sq. ft. EXCLUDED AREAS:
PATIO: 1555 sq. ft. PORCH: 38 sq. ft.
GARAGE: 599 sq. ft.
TOTAL: 3563 sq. ft.
SIZES AND DIMENSIONS ARE APPROXIMATE, ACTUAL MAY VARY.

Disclaimer: Sizes and Dimensions are Approximate, Actual May Vary.



Paul D. Andrews
720-270-1306
andrews.realtor@gmail.com
<https://www.greaterdenverhomesite.com/paul-andrews/>





GROSS INTERNAL AREA
FLOOR 1: 1027 sq. ft. FLOOR 2: 1151 sq. ft.
FLOOR 3: 1385 sq. ft. EXCLUDED AREAS:
PATIO: 1555 sq. ft. PORCH: 38 sq. ft.
GARAGE: 599 sq. ft.
TOTAL: 3563 sq. ft.
SIZES AND DIMENSIONS ARE APPROXIMATE, ACTUAL MAY VARY.

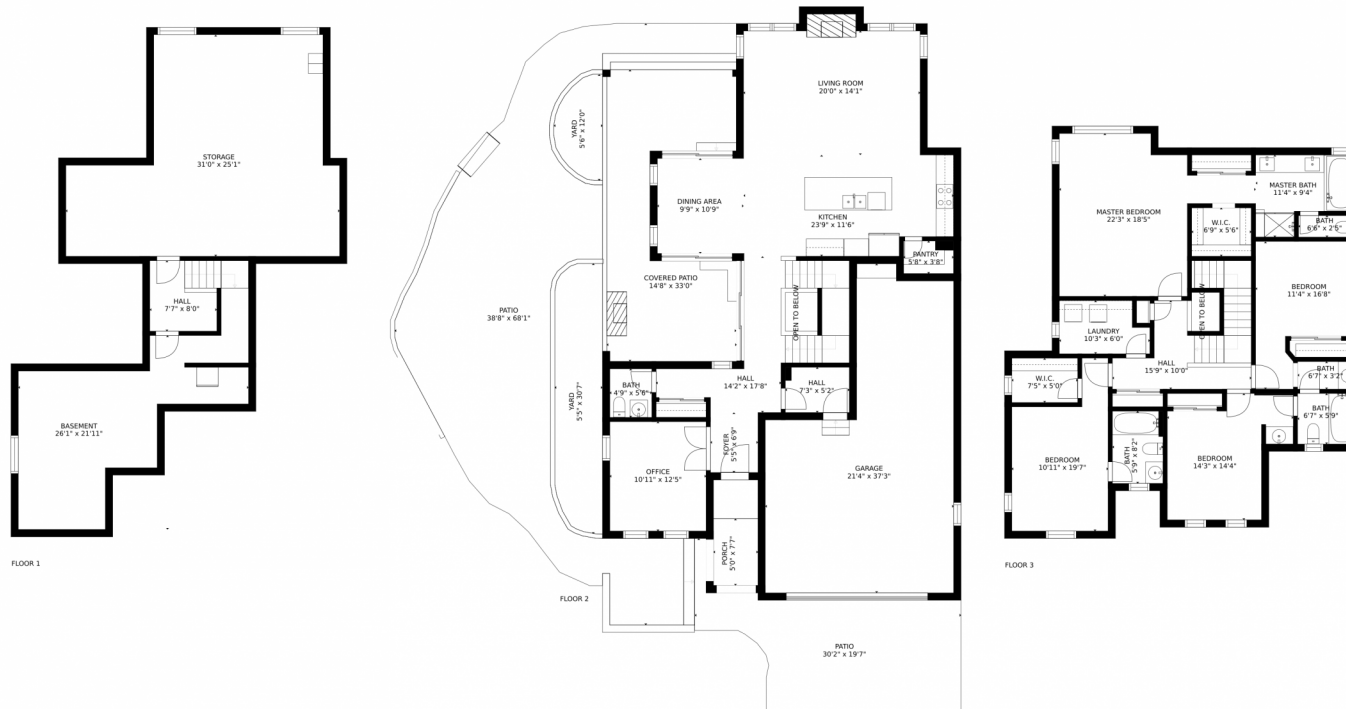
Disclaimer: Sizes and Dimensions are Approximate, Actual May Vary.



Paul D. Andrews
720-270-1306
andrews.realtor@gmail.com
<https://www.greaterdenverhomesite.com/paul-andrews/>



2245 S Nile Street, Lakewood, CO 80228 – All Levels



GROSS INTERNAL AREA
FLOOR 1: 1027 sq. ft. FLOOR 2: 1151 sq. ft.
FLOOR 3: 1385 sq. ft. EXCLUDED AREAS:
PATIO: 1555 sq. ft. PORCH: 38 sq. ft.
GARAGE: 599 sq. ft.
TOTAL: 3563 sq. ft.
SIZES AND DIMENSIONS ARE APPROXIMATE, ACTUAL MAY VARY.

Disclaimer: Sizes and Dimensions are Approximate, Actual May Vary.



Paul D. Andrews
720-270-1306
andrews.realtor@gmail.com
<https://www.greaterdenverhomesite.com/paul-andrews/>



Scan code
for more
property
details