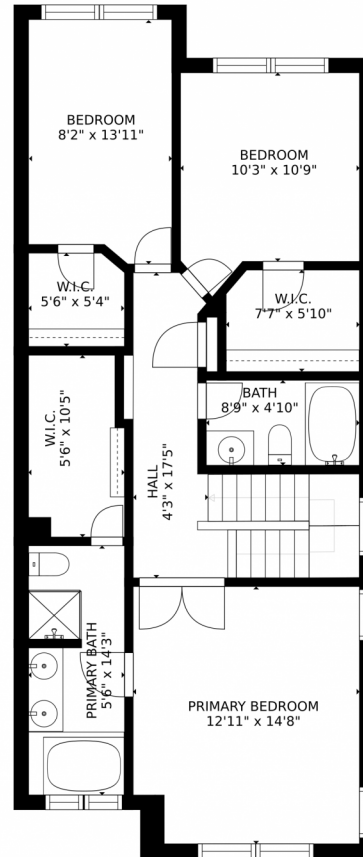


5555 E. Briarwood Ave #1301, Centennial, CO 80122 – 2nd Level



GROSS INTERNAL AREA
FLOOR 1: 400 sq. ft. FLOOR 2: 473 sq. ft.
FLOOR 3: 836 sq. ft. EXCLUDED AREAS:
GARAGE: 323 sq. ft.
TOTAL: 1710 sq. ft.

MEASUREMENTS CALCULATED BY V1Photos.com ARE DEEMED HIGHLY RELIABLE BUT NOT GUARANTEED.



Disclaimer: Sizes and Dimensions are Approximate, Actual May Vary.



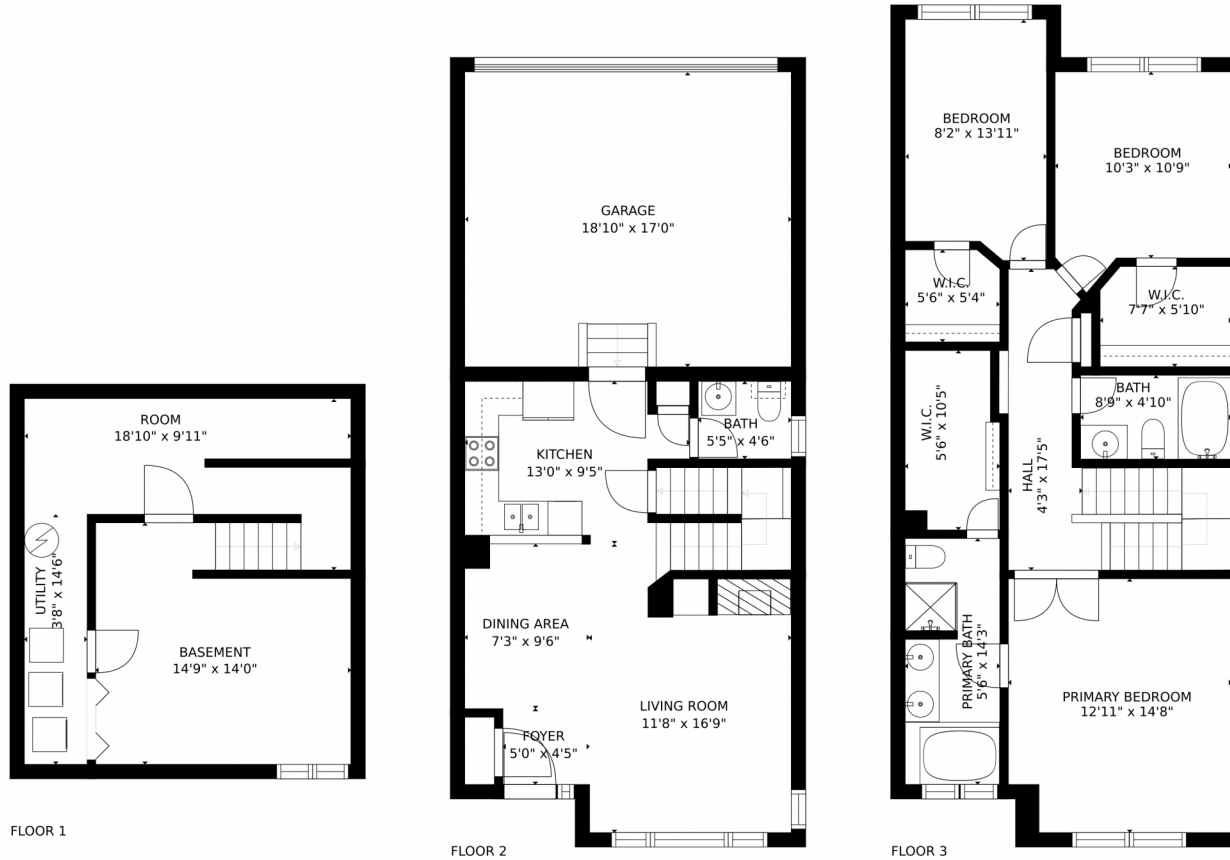
Taylor Haas
303-665-7368
taylorh@coloradorpm.com
<https://www.coloradorpm.com/available-rental-properties-denver>



Scan code
for more
property
details



5555 E. Briarwood Ave #1301, Centennial, CO 80122 – All Levels



GROSS INTERNAL AREA
FLOOR 1: 400 sq. ft. FLOOR 2: 473 sq. ft.
FLOOR 3: 836 sq. ft. EXCLUDED AREAS:
GARAGE: 323 sq. ft.
TOTAL: 1710 sq. ft.

MEASUREMENTS CALCULATED BY V1Photos.COM ARE DEEMED HIGHLY RELIABLE BUT NOT GUARANTEED.



Disclaimer: Sizes and Dimensions are Approximate, Actual May Vary.

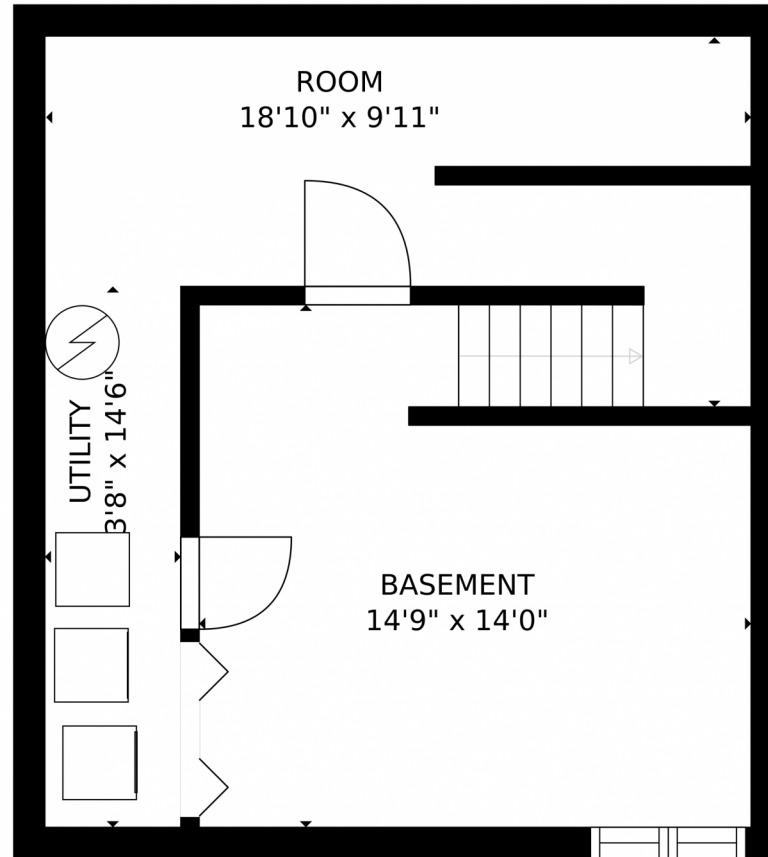


Taylor Haas
303-665-7368
taylorh@coloradorpm.com
<https://www.coloradorpm.com/available-rental-properties-denver>



Scan code
for more
property
details





GROSS INTERNAL AREA
FLOOR 1: 400 sq. ft. FLOOR 2: 473 sq. ft.
FLOOR 3: 836 sq. ft. EXCLUDED AREAS:
GARAGE: 323 sq. ft.
TOTAL: 1710 sq. ft.

MEASUREMENTS CALCULATED BY V1Photos.com ARE DEEMED HIGHLY RELIABLE BUT NOT GUARANTEED.

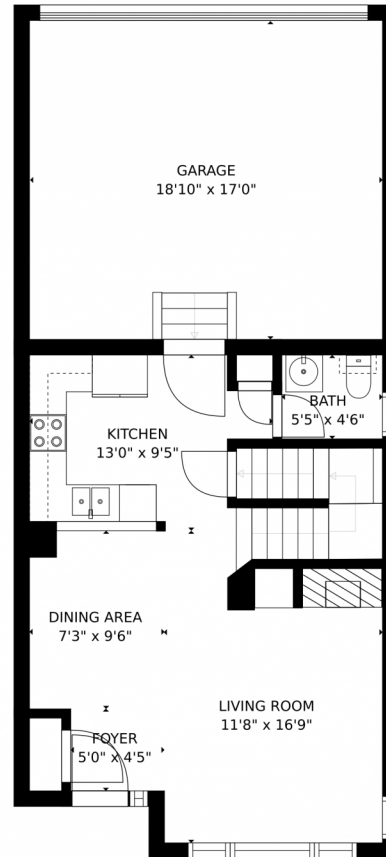
Disclaimer: Sizes and Dimensions are Approximate, Actual May Vary.



Taylor Haas
303-665-7368
taylorh@coloradorpm.com
<https://www.coloradorpm.com/available-rental-properties-denver>



5555 E. Briarwood Ave #1301, Centennial, CO 80122 – Main Level



GROSS INTERNAL AREA
FLOOR 1: 400 sq. ft. FLOOR 2: 473 sq. ft.
FLOOR 3: 836 sq. ft. EXCLUDED AREAS:
GARAGE: 323 sq. ft.
TOTAL: 1710 sq. ft.

MEASUREMENTS CALCULATED BY V1Photos.com ARE DEEMED HIGHLY RELIABLE BUT NOT GUARANTEED.



Disclaimer: Sizes and Dimensions are Approximate, Actual May Vary.



Taylor Haas
303-665-7368
taylorh@coloradorpm.com
<https://www.coloradorpm.com/available-rental-properties-denver>



Scan code
for more
property
details

