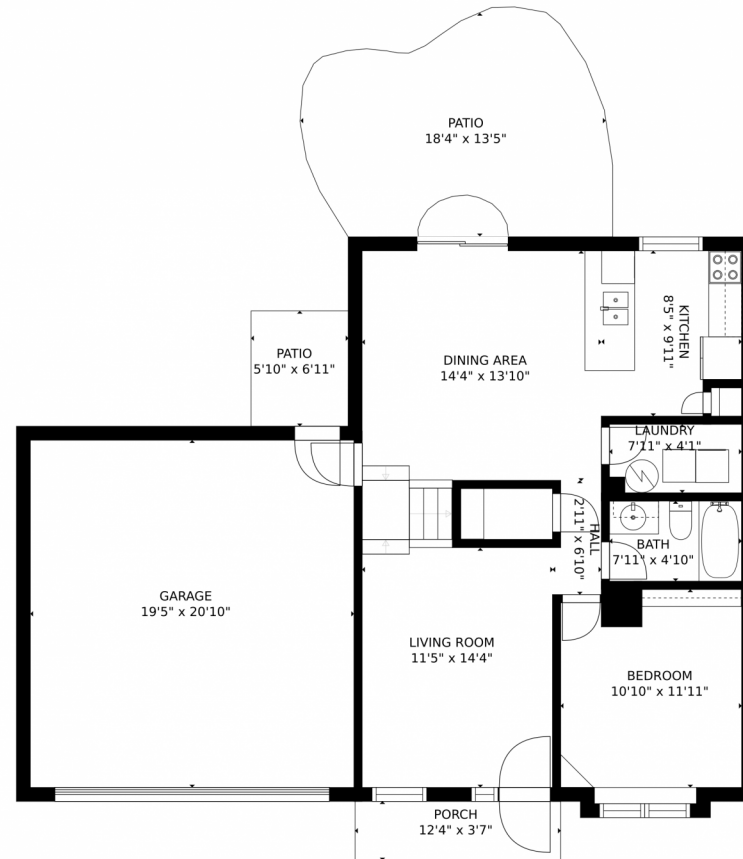


# 295 Dahlia Drive, Louisville, CO 80027 – Main Level



GROSS INTERNAL AREA  
FLOOR 1: 739 sq. ft, FLOOR 2: 471 sq. ft  
EXCLUDED AREAS: , GARAGE: 405 sq. ft  
PATIO: 252 sq. ft, PORCH: 44 sq. ft  
TOTAL: 1211 sq. ft  
MEASUREMENTS CALCULATED BY V1Photos.com ARE DEEMED HIGHLY RELIABLE BUT NOT GUARANTEED.



Disclaimer: Sizes and Dimensions are Approximate, Actual May Vary.



**Terri Ellerington**

303-929-8116

terri@elevated-team.com

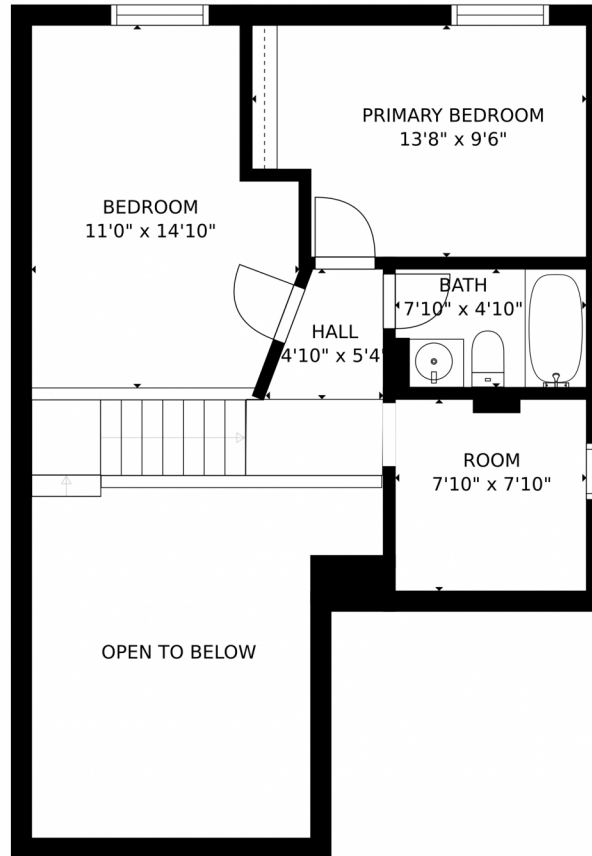
<https://www.remax.com/real-estate-agents/terri-ellerington-louisville-co/102051301>



Scan code  
for more  
property  
details



# 295 Dahlia Drive, Louisville, CO 80027 – Upper Level



GROSS INTERNAL AREA  
FLOOR 1: 739 sq. ft., FLOOR 2: 471 sq. ft.  
EXCLUDED AREAS: , GARAGE: 405 sq. ft.  
PATIO: 252 sq. ft., PORCH: 44 sq. ft.  
TOTAL: 1211 sq. ft.  
MEASUREMENTS CALCULATED BY V1Photos.COM ARE DEEMED HIGHLY RELIABLE BUT NOT GUARANTEED.



Disclaimer: Sizes and Dimensions are Approximate, Actual May Vary.



**Terri Ellerington**

303-929-8116

terri@elevated-team.com

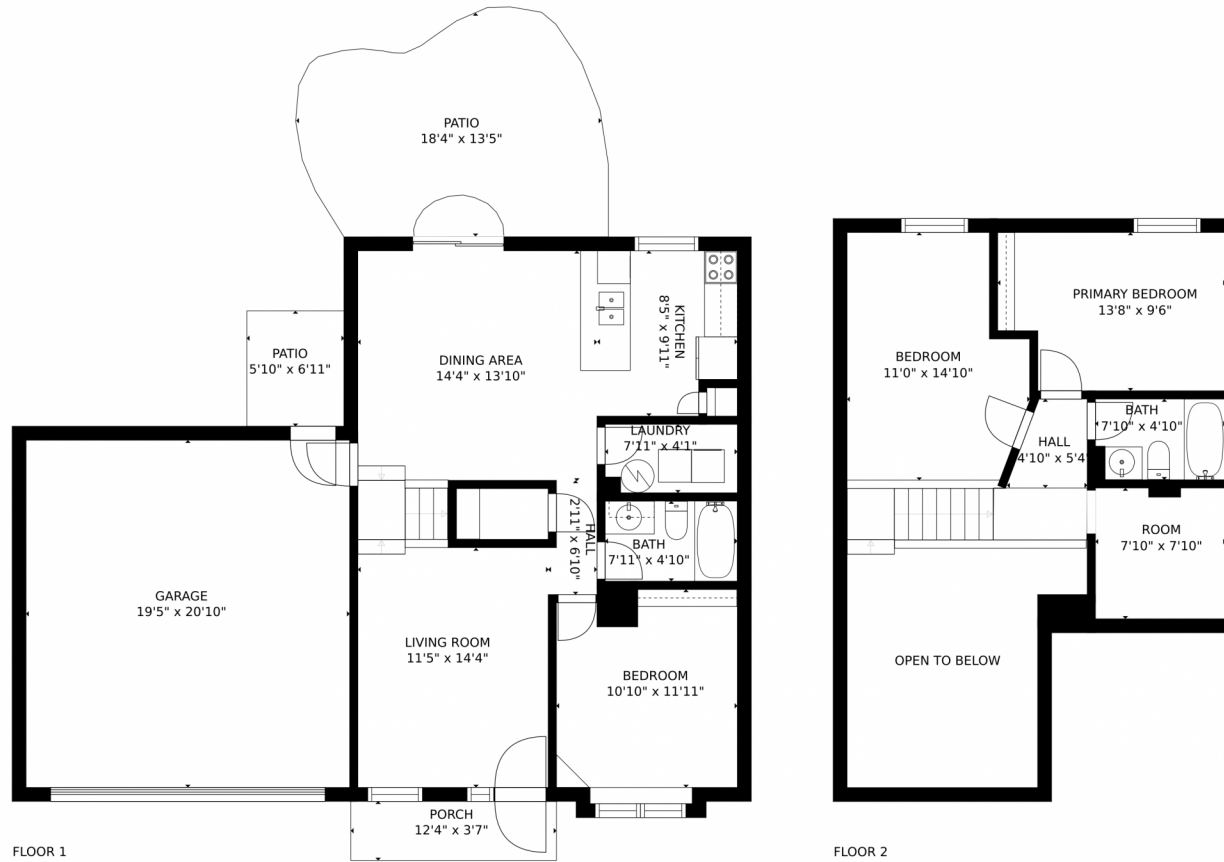
<https://www.remax.com/real-estate-agents/terri-ellerington-louisville-co/102051301>



Scan code  
for more  
property  
details



# 295 Dahlia Drive, Louisville, CO 80027 – All Levels



FLOOR 1

FLOOR 2

GROSS INTERNAL AREA  
FLOOR 1: 739 sq. ft. FLOOR 2: 471 sq. ft  
EXCLUDED AREAS: , GARAGE: 405 sq. ft  
PATIO: 252 sq. ft, PORCH: 44 sq. ft  
TOTAL: 1211 sq. ft  
MEASUREMENTS CALCULATED BY V1Photos.COM ARE DEEMED HIGHLY RELIABLE BUT NOT GUARANTEED.

Disclaimer: Sizes and Dimensions are Approximate, Actual May Vary.



**Terri Ellerington**

303-929-8116

terri@elevated-team.com

<https://www.remax.com/real-estate-agents/terri-ellerington-louisville-co/102051301>



Scan code  
for more  
property  
details

