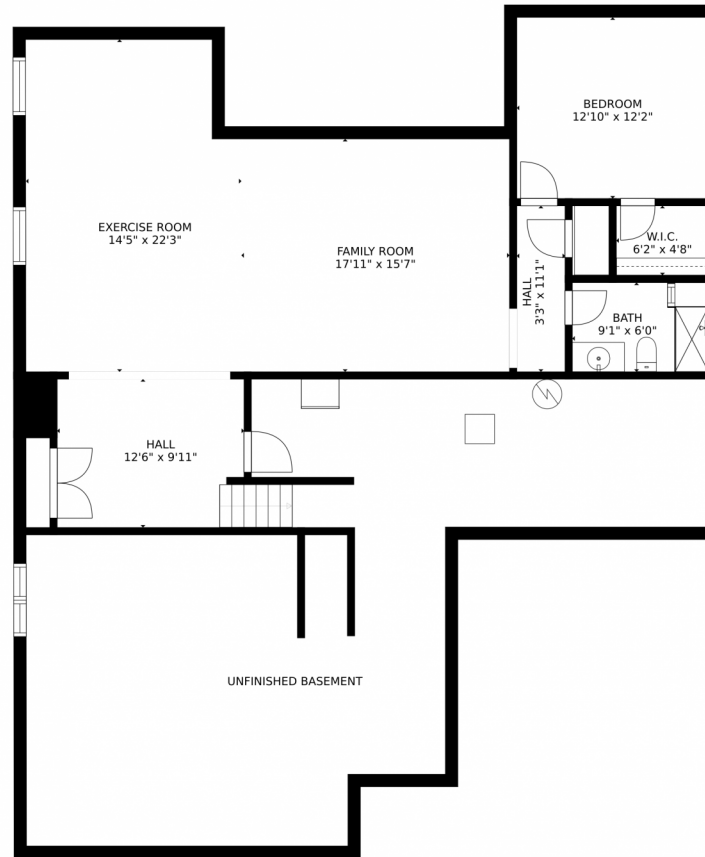


6074 Clover Ridge Circle, Castle Rock, CO 80104 — Lower Level



GROSS INTERNAL AREA
FLOOR 1: 1107 sq. ft. FLOOR 2: 2138 sq. ft.
EXCLUDED AREAS: , UNFINISHED BASEMENT: 836 sq. ft.
GARAGE: 637 sq. ft. PATIO: 123 sq. ft.
PORCH: 21 sq. ft.
TOTAL: 3245 sq. ft.
MEASUREMENTS CALCULATED BY V1Photos.COM ARE DEEMED HIGHLY RELIABLE BUT NOT GUARANTEED.



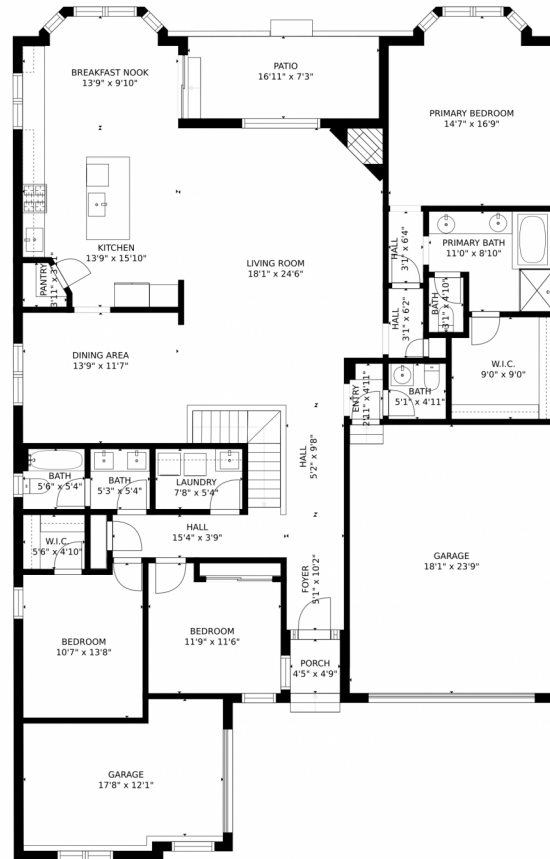
Disclaimer: Sizes and Dimensions are Approximate, Actual May Vary.



Teresa Micale
303-437-1744
teresamicale@comcast.net
<http://www.bahlmarketinggroup.com>



6074 Clover Ridge Circle, Castle Rock, CO 80104 – Main Level



GROSS INTERNAL AREA
FLOOR 1: 1107 sq. ft. FLOOR 2: 2138 sq. ft.
EXCLUDED AREAS: , UNFINISHED BASEMENT: 836 sq. ft.
GARAGE: 637 sq. ft. PATIO: 123 sq. ft.
PORCH: 21 sq. ft.
TOTAL: 3245 sq. ft.

MEASUREMENTS CALCULATED BY V1Photos.COM ARE DEEMED HIGHLY RELIABLE BUT NOT GUARANTEED.



Disclaimer: Sizes and Dimensions are Approximate, Actual May Vary.



Teresa Micale

303-437-1744

teresamicale@comcast.net

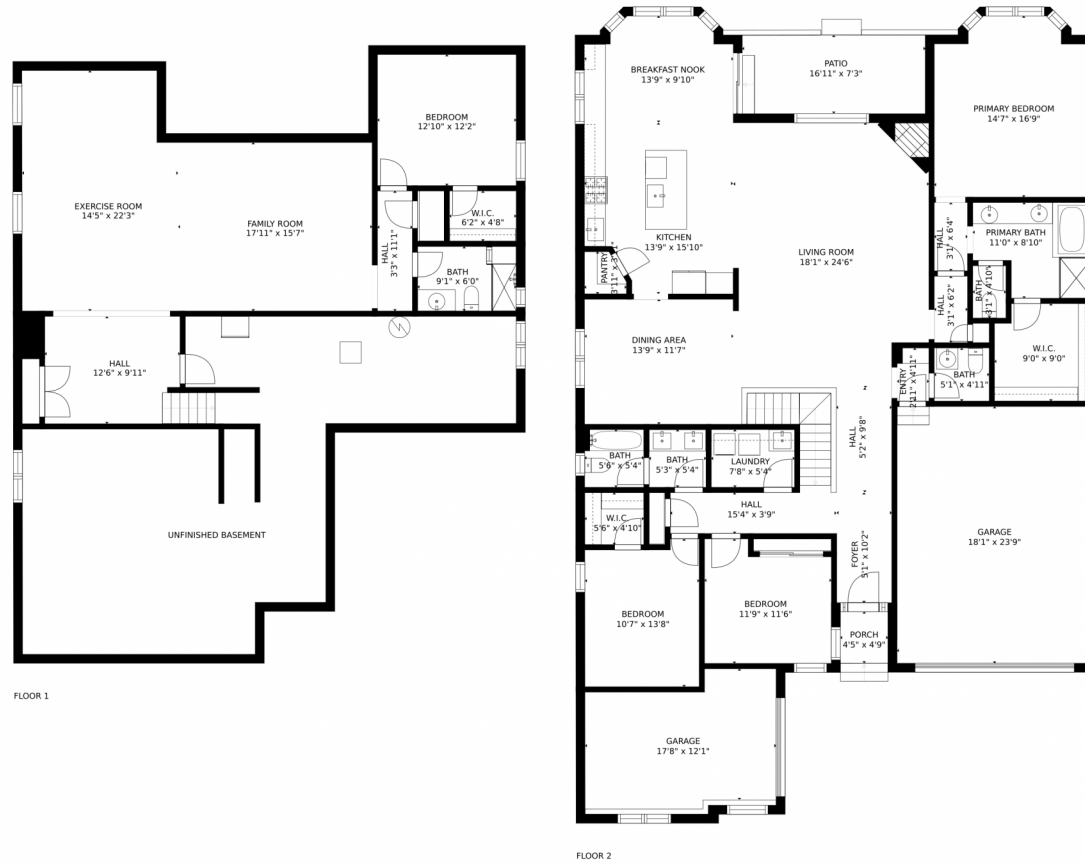
<http://www.bahlmarketinggroup.com>



Scan code
for more
property
details



6074 Clover Ridge Circle, Castle Rock, CO 80104 – All Levels



GROSS INTERNAL AREA
FLOOR 1: 1107 sq. ft. FLOOR 2: 2138 sq. ft.
EXCLUDED AREAS: UNFINISHED BASEMENT: 836 sq. ft.
GARAGE: 637 sq. ft. PATIO: 123 sq. ft.
PORCH: 21 sq. ft.
TOTAL: 3245 sq. ft.

MEASUREMENTS CALCULATED BY V1Photos.com ARE DEEMED HIGHLY RELIABLE BUT NOT GUARANTEED.



Disclaimer: Sizes and Dimensions are Approximate, Actual May Vary.



Teresa Micale
303-437-1744
teresamicale@comcast.net
<http://www.bahlmarketinggroup.com>

