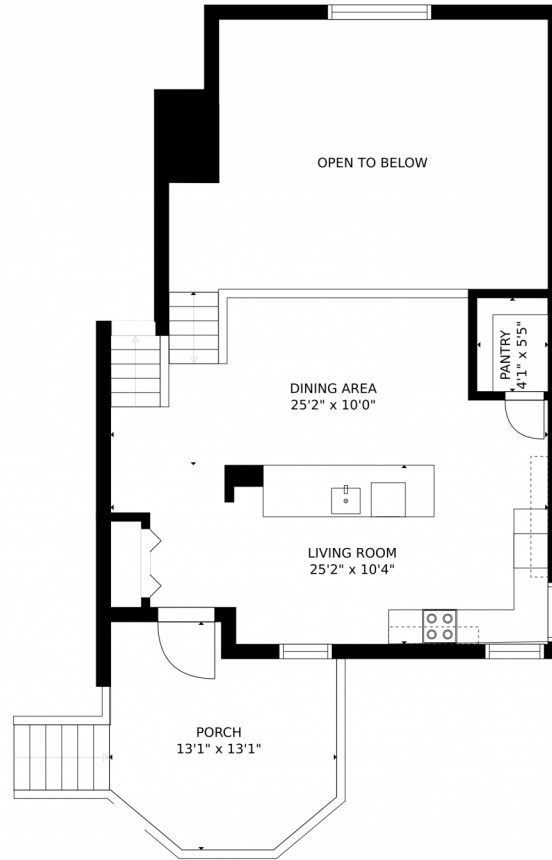


# 1020 War Eagle Drive South, Colorado Springs, CO 80919 – Main Level



GROSS INTERNAL AREA  
FLOOR 1: 415 sq. ft., FLOOR 2: 765 sq. ft.  
FLOOR 3: 490 sq. ft., FLOOR 4: 819 sq. ft.  
EXCLUDED AREAS: , GARAGE: 461 sq. ft.  
DECK: 72 sq. ft., PORCH: 145 sq. ft.  
TOTAL: 2489 sq. ft.  
MEASUREMENTS CALCULATED BY V1Photos.COM ARE DEEMED HIGHLY RELIABLE BUT NOT GUARANTEED.

Disclaimer: Sizes and Dimensions are Approximate, Actual May Vary.

**Terry Moss**  
719-466-1299  
terry.m5@icloud.com

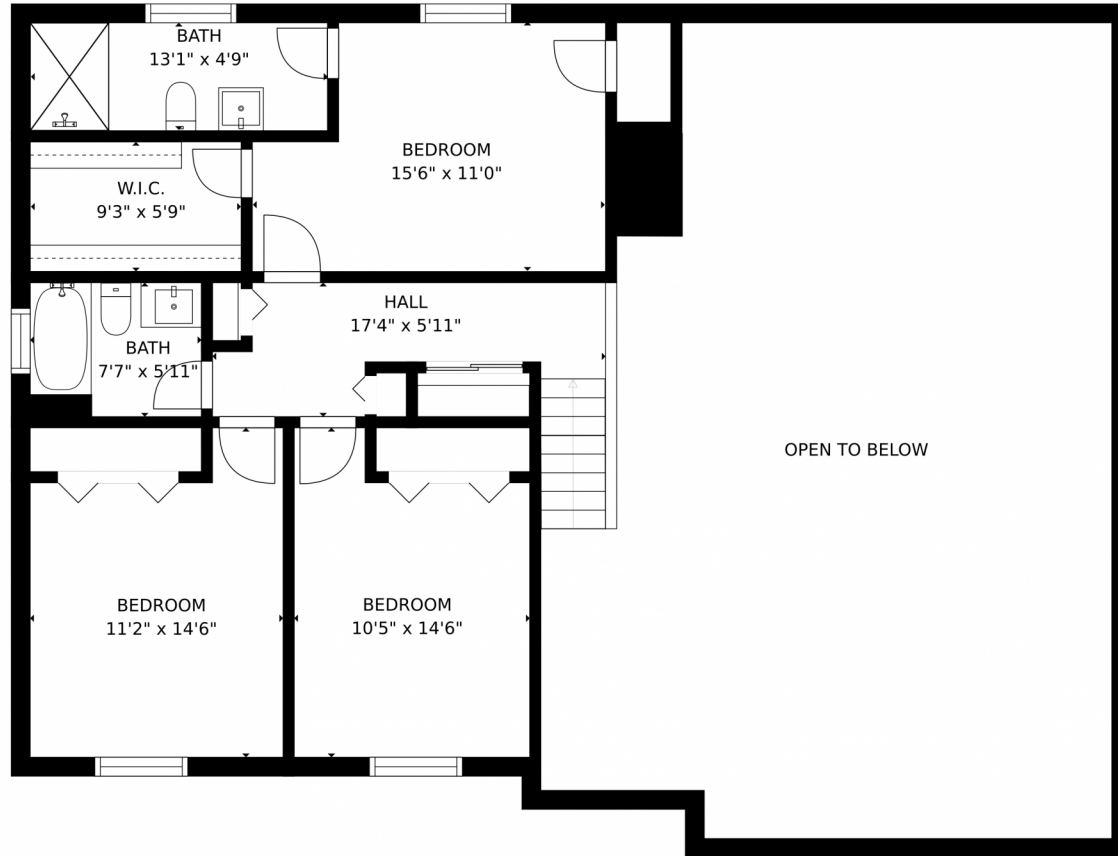


**Jordan Kermes**  
952-956-2958  
jkermes@wedgewoodhomesrealty.com  
<https://colorado.wedgewoodhomesrealty.com>

Scan code  
for more  
property  
details



1020 War Eagle Drive South, Colorado Springs, CO 80919 – 2nd Level



GROSS INTERNAL AREA  
FLOOR 1: 415 sq. ft. FLOOR 2: 765 sq. ft.  
FLOOR 3: 490 sq. ft. FLOOR 4: 819 sq. ft.  
EXCLUDED AREAS: GARAGE: 461 sq. ft.  
DECK: 72 sq. ft. PORCH: 145 sq. ft.  
TOTAL: 2489 sq. ft.  
MEASUREMENTS CALCULATED BY V1Photos.com ARE DEEMED HIGHLY RELIABLE BUT NOT GUARANTEED.



Disclaimer: Sizes and Dimensions are Approximate, Actual May Vary.

Terry Moss  
719-466-1299  
terry.m5@icloud.com



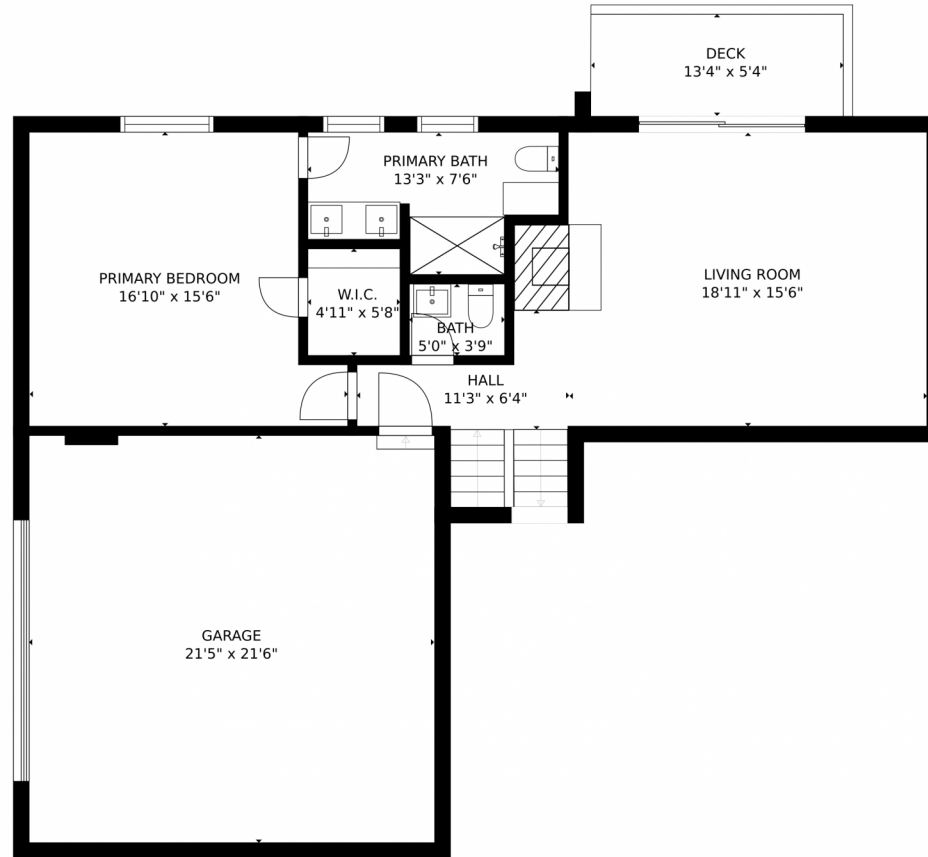
Jordan Kermes  
952-956-2958  
jkermes@wedgewoodhomesrealty.com  
<https://colorado.wedgewoodhomesrealty.com>



Scan code  
for more  
property  
details



# 1020 War Eagle Drive South, Colorado Springs, CO 80919 – Lower Level



GROSS INTERNAL AREA  
FLOOR 1: 415 sq. ft, FLOOR 2: 765 sq. ft  
FLOOR 3: 490 sq. ft, FLOOR 4: 819 sq. ft  
EXCLUDED AREAS: , GARAGE: 461 sq. ft  
DECK: 72 sq. ft, PORCH: 145 sq. ft  
TOTAL: 2489 sq. ft  
MEASUREMENTS CALCULATED BY V1Photos.COM ARE DEEMED HIGHLY RELIABLE BUT NOT GUARANTEED.



Disclaimer: Sizes and Dimensions are Approximate, Actual May Vary.

**Terry Moss**  
719-466-1299  
terry.m5@icloud.com

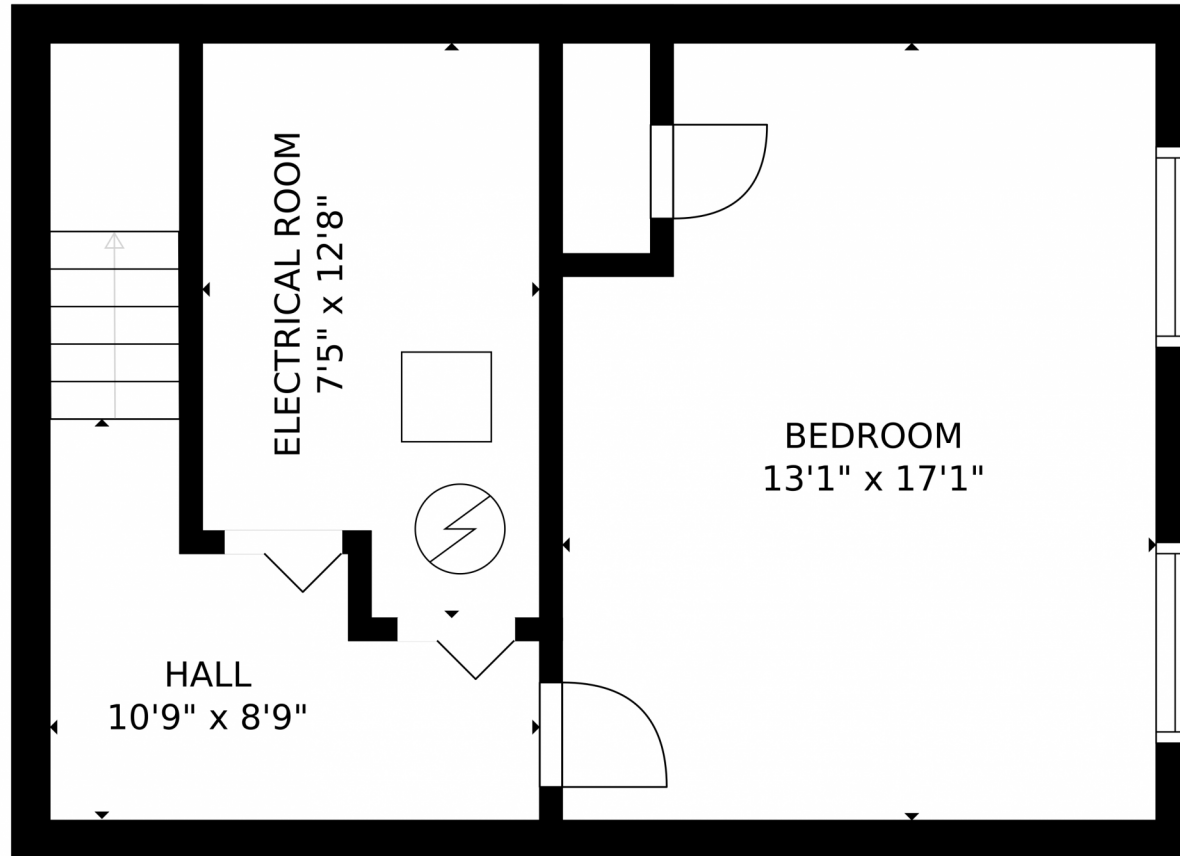


**Jordan Kermes**  
952-956-2958  
jkermes@wedgewoodhomesrealty.com  
<https://colorado.wedgewoodhomesrealty.com>

Scan code  
for more  
property  
details



1020 War Eagle Drive South, Colorado Springs, CO 80919 – Basement



GROSS INTERNAL AREA  
FLOOR 1: 415 sq. ft, FLOOR 2: 765 sq. ft  
FLOOR 3: 490 sq. ft, FLOOR 4: 819 sq. ft  
EXCLUDED AREAS: , GARAGE: 461 sq. ft  
DECK: 72 sq. ft, PORCH: 145 sq. ft  
TOTAL: 2489 sq. ft  
MEASUREMENTS CALCULATED BY V1Photos.com ARE DEEMED HIGHLY RELIABLE BUT NOT GUARANTEED.

Disclaimer: Sizes and Dimensions are Approximate, Actual May Vary.

Terry Moss  
719-466-1299  
terry.m5@icloud.com

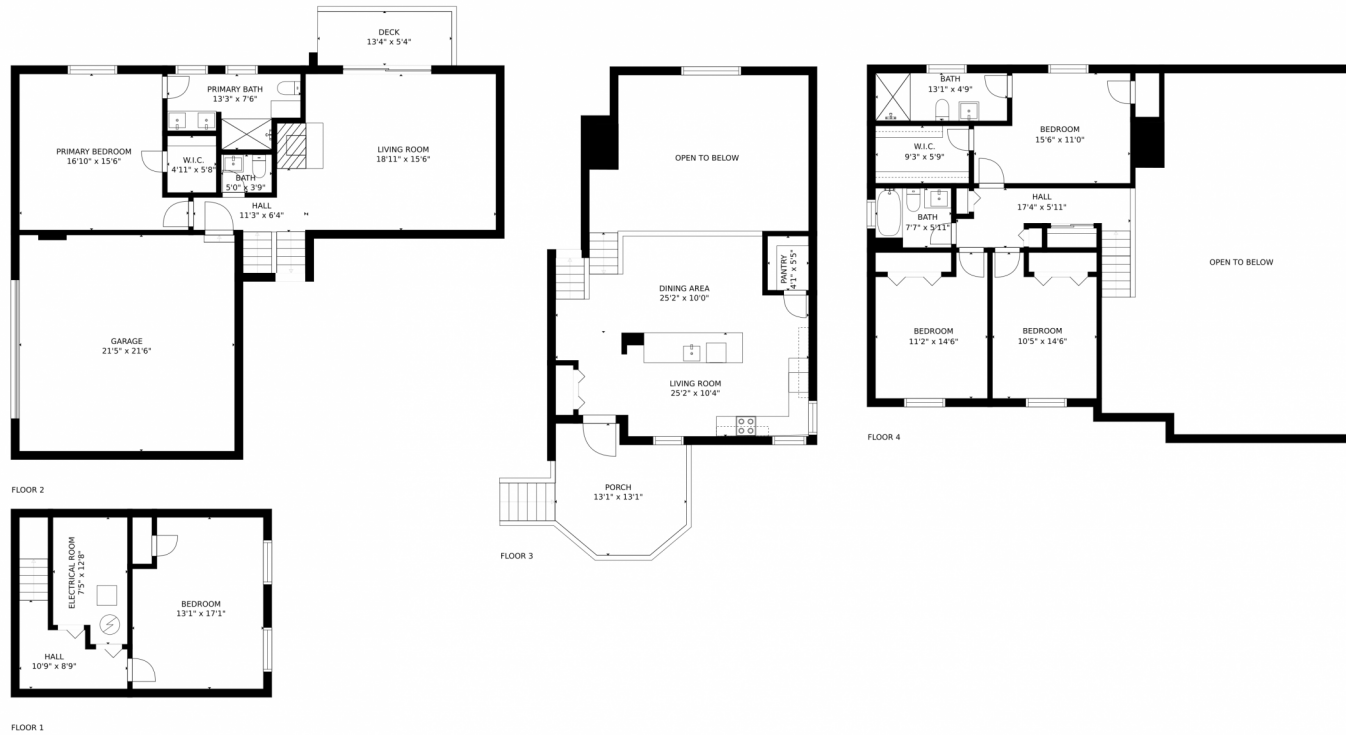


Jordan Kermes  
952-956-2958  
jkermes@wedgewoodhomesrealty.com  
<https://colorado.wedgewoodhomesrealty.com>

Scan code  
for more  
property  
details



# 1020 War Eagle Drive South, Colorado Springs, CO 80919 – All Levels



GROSS INTERNAL AREA  
 FLOOR 1: 415 sq. ft, FLOOR 2: 765 sq. ft  
 FLOOR 3: 490 sq. ft, FLOOR 4: 819 sq. ft  
 EXCLUDED AREAS: , GARAGE: 461 sq. ft  
 DECK: 72 sq. ft, PORCH: 145 sq. ft  
 TOTAL: 2489 sq. ft  
 MEASUREMENTS CALCULATED BY V1Photos.com ARE DEEMED HIGHLY RELIABLE BUT NOT GUARANTEED.



Disclaimer: Sizes and Dimensions are Approximate, Actual May Vary.

**Terry Moss**  
 719-466-1299  
 terry.m5@icloud.com



**Jordan Kermes**  
 952-956-2958  
 jkermes@wedgewoodhomesrealty.com  
<https://colorado.wedgewoodhomesrealty.com>

Scan code  
 for more  
 property  
 details

