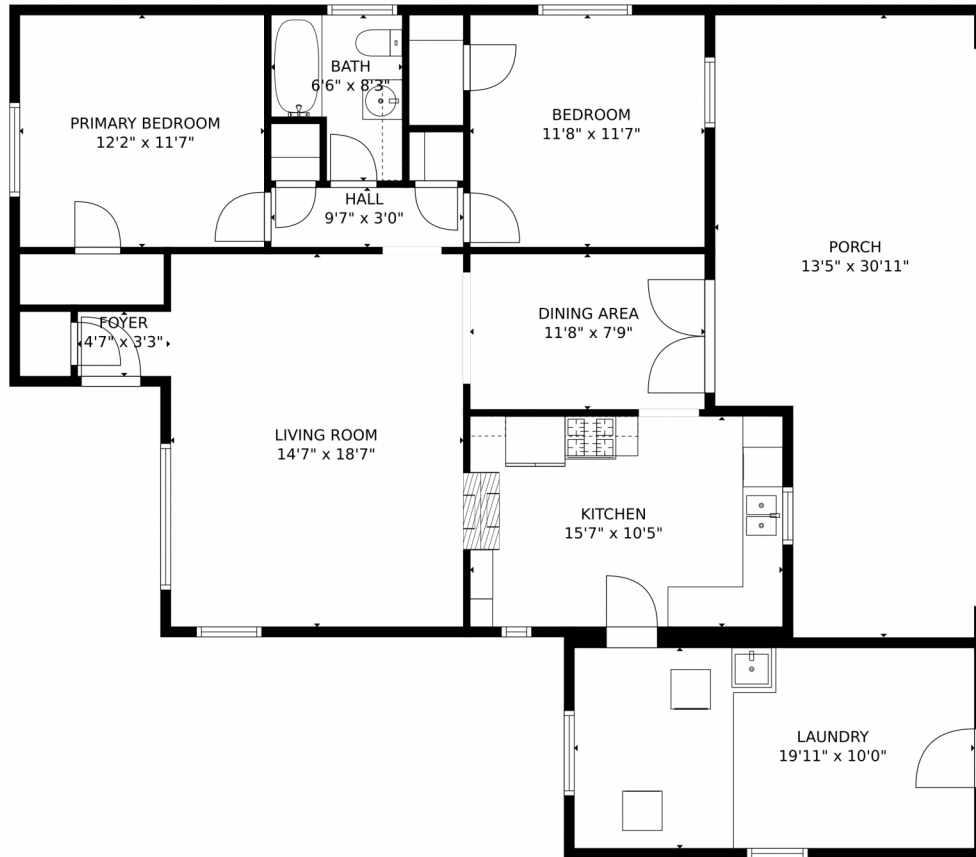


1560 Roslyn Street, Denver, CO 80220 – Main Floor



GROSS INTERNAL AREA  
FLOOR 1: 1194 sq. ft. EXCLUDED AREAS:  
PORCH: 369 sq. ft  
TOTAL: 1194 sq. ft  
MEASUREMENTS CALCULATED BY V1Photos.COM ARE DEEMED HIGHLY RELIABLE BUT NOT GUARANTEED.



Disclaimer: Sizes and Dimensions are Approximate, Actual May Vary.



**Taylor Haas**  
303-665-7368  
taylorh@coloradorpm.com  
<https://www.coloradorpm.com/available-rental-properties-denver>



Scan code  
for more  
property  
details