

Clover Circle-Real Estate Empowered is "Paying it Forward" Littleton!



Condominium



937 SQFT



2 Beds



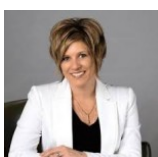
2 Baths



0.01 Acre

## PROPERTY DETAILS

Location, location, LOCATION! This snazzy penthouse condo is nestled on a green belt, adjacent to Aspen Grove mall, on a non-thru street. The brand new deck with lighting faces the more than private back green facing Santa Fe, with a stone wall absorbing much of the noise. Higher ceilings in this updated unit. Parking space assigned and deeded to property. Elec baseboard heat costs about \$100/mo in the winter. Super low maintenance! Extra insulation added to walls. Vinyl windows. Brand new kitchen with stainless steel appliances and wood like flooring throughout. Great floorplan with two master bedrooms, each with large walk-in closets and private baths. Both full baths have been updated with counters, fixtures, lighting, faucet, flooring. New electric and plumbing. Front-load washer & dryer will fit in the laundry space. All appliances stay. Built-in microwave. New countertops, backsplash, and faucet. Lighted, secure, and insulated storage closet approx 3' x 5'. Walking distance to Breckenridge Brewery, Platte River Park, Aspen Grove mall/shopping, Mineral lightrail and bus station. Awesome digs and location for this price ... and way cheaper to own than rent! Also super smart investment property! HOA is putting a sizeable investment into exterior and all new decks in 2020-2021!



**Liza Burns**  
937-867-6231  
liza@clovercircle.com  
<https://clovercircle.com/>



Scan code  
for more  
property  
details

