



6021 South Yampa Court
 Aurora, CO 80016
 COMMUNITY: The Farm at Arapahoe County

MLS # 9405628
 PRICE \$510,000



Single Family 2583 SQFT 5 Beds 3 Baths 2 Car

PROPERTY DETAILS

Welcome to your new home! LOCATION ideal for family and recreation! Beautiful high ceilings when you first enter the home to give it a wow factor. Two story, 5 bedroom, 3 bathroom home in the Farm at Creekside with a finished basement. Freshly painted, new carpet and updated whole house humidifier. Roof replaced within 3 years with impact resistant shake. From the kitchen, walk out to a brand new extended cement patio. The back yard boasts a garden with existing produce ready to go. Great home for entertaining and move in ready! You will love living in The Farm where residents enjoy the award winning education system of Cherry Creek Schools, along with Grandview High School. Several nearby parks within walking distance. Many community events are coordinated every year. This home has easy access to the following: 10 minutes to the Denver Tech Center, 20 minutes to the Denver International Airport, easy highway access to C470, 5 minutes to Southlands shopping. Jump on your bike and you are on Piney Creek Trail which you can take all the way into Cherry Creek park. Enjoy endless dining, shopping, and entertainment options in the Southlands Outdoor Retail District featuring a full AMC Dine-In Movie Theater, abundant casual dining options along with higher end restaurant options as well, and so many shopping choices. The Southlands Mall also features a robust courtyard area with a mini splash park in the Summer and skating rink in the Winter.



Kimberly Vanderwall
 303-810-2816
 kimberly@exitrealtydtc.com



Tatyana Sturm
 720-350-5909
 tatyana@exitrealtydtc.com
<https://thestorckteam.com>



Scan code
 for more
 property
 details



You don't want to miss out on this beautiful home!



Kimberly Vanderwall
303-810-2816
kimberly@exitrealtydtc.com



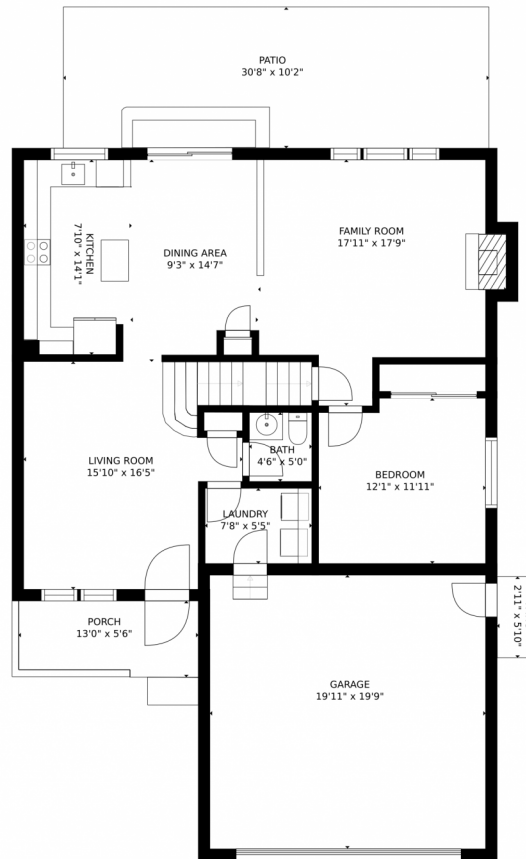
Tatyana Sturm
720-350-5909
tatyana@exitrealtydtc.com
<https://thestorckteam.com>



Scan code
for more
property
details



6021 South Yampa Court, Aurora, CO 80016 — Main



GROSS INTERNAL AREA
FLOOR 1: 460 sq. ft. FLOOR 2: 1000 sq. ft.
FLOOR 3: 1001 sq. ft. EXCLUDED AREAS:
PATIO: 333 sq. ft. PORCH: 67 sq. ft.
GARAGE: 393 sq. ft.
TOTAL: 2462 sq. ft.
SIZES AND DIMENSIONS ARE APPROXIMATE, ACTUAL MAY VARY.

Disclaimer: Sizes and Dimensions are Approximate, Actual May Vary.



Kimberly Vanderwall
303-810-2816
kimberly@exitrealtydtc.com

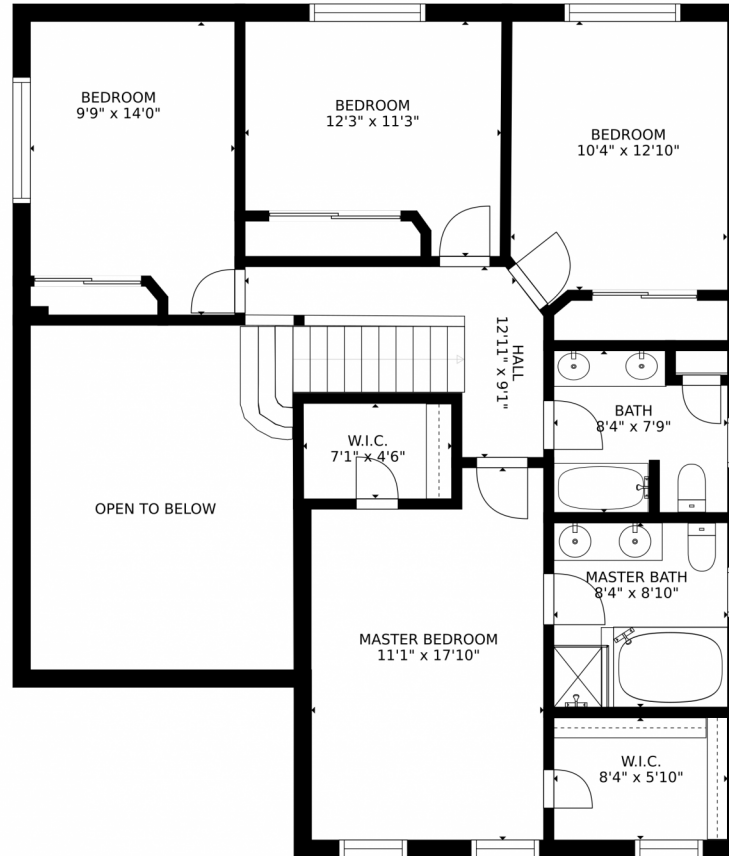


Tatyana Sturm
720-350-5909
tatyana@exitrealtydtc.com
<https://thestorckteam.com>



Scan code
for more
property
details

6021 South Yampa Court, Aurora, CO 80016 – 2nd Level



GROSS INTERNAL AREA
FLOOR 1: 460 sq. ft. FLOOR 2: 1000 sq. ft.
FLOOR 3: 1001 sq. ft. EXCLUDED AREAS:
PATIO: 333 sq. ft. PORCH: 67 sq. ft.
GARAGE: 393 sq. ft.
TOTAL: 2462 sq. ft.
SIZES AND DIMENSIONS ARE APPROXIMATE, ACTUAL MAY VARY.

Disclaimer: Sizes and Dimensions are Approximate, Actual May Vary.



Kimberly Vanderwall
303-810-2816
kimberly@exitrealtydtc.com



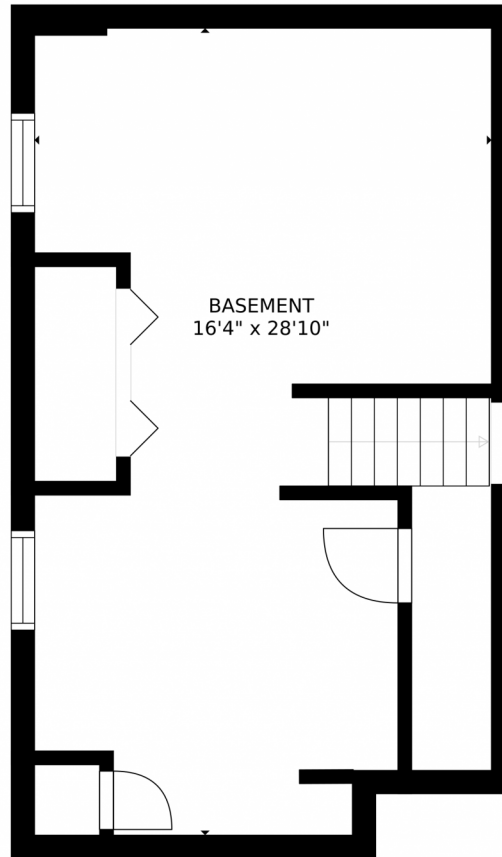
Tatyana Sturm
720-350-5909
tatyana@exitrealtydtc.com
<https://thestorckteam.com>



Scan code
for more
property
details



6021 South Yampa Court, Aurora, CO 80016 – Lower Level



BASEMENT
16'4" x 28'10"

GROSS INTERNAL AREA
FLOOR 1: 460 sq. ft. FLOOR 2: 1000 sq. ft.
FLOOR 3: 1001 sq. ft. EXCLUDED AREAS:
PATIO: 333 sq. ft. PORCH: 67 sq. ft.
GARAGE: 393 sq. ft.
TOTAL: 2462 sq. ft.
SIZES AND DIMENSIONS ARE APPROXIMATE, ACTUAL MAY VARY.

Disclaimer: Sizes and Dimensions are Approximate, Actual May Vary.



Kimberly Vanderwall
303-810-2816
kimberly@exitrealtydtc.com



Tatyana Sturm
720-350-5909
tatyana@exitrealtydtc.com
<https://thestorckteam.com>



Scan code
for more
property
details



6021 South Yampa Court, Aurora, CO 80016 – All Levels



GROSS INTERNAL AREA
FLOOR 1: 460 sq. ft, FLOOR 2: 1000 sq. ft
FLOOR 3: 1001 sq. ft, EXCLUDED AREAS:
PATIO: 333 sq. ft, PORCH: 67 sq. ft
GARAGE: 393 sq. ft
TOTAL: 2462 sq. ft
SIZES AND DIMENSIONS ARE APPROXIMATE, ACTUAL MAY VARY.

Disclaimer: Sizes and Dimensions are Approximate, Actual May Vary.



Kimberly Vanderwall
303-810-2816
kimberly@exitrealtydtc.com



Tatyana Sturm
720-350-5909
tatyana@exitrealtydtc.com
<https://thestorckteam.com>



Scan code
for more
property
details

