



13853 Dogleg Lane
Broomfield, CO 80023

MLS # 3064035
PRICE \$759,900



Single Family



3769 SQFT



4 Beds



2 Baths



3 Car



0.15 Acre

PROPERTY DETAILS

Wonderful two story in the Broadlands, Setting on the 7th fairway of the Broadlands Golf Course with Views that will make you smile. This Home has a great floor plan with soaring 20 foot ceilings and a wall of windows filling the living room and Family Room with natural light. There are extensive hardwood floors throughout the main level. The spacious kitchen has newer stainless steel appliances, lots of counter space, a sunny kitchen nook and a large island. A dramatic sliding glass door opens the entire Kitchen out onto the expansive covered patio for a true indoor-outdoor living experience. It's easy to work from home in the main floor Large office. A three quarter bath and large laundry room completes the main level. Upstairs is the Large Master Suite with large windows again allowing you to enjoy the natural light, Mountain Views and to top it off there is a gas fireplace. Walk right into a newly renovated totally inspired 5 piece bath. Upstairs you'll also find 3 spacious secondary bedrooms and a additional bathroom. The basement has a media room with more room for you to finish adding endless possibilities for future expansion. The lushly landscaped backyard was cleverly raised to create a level entertaining oasis backing to the Golf Course. The oversized 3 car garage with room for a work area allows for optimal storage and vehicle space. This home is ready for move in and for you to enjoy everything that Broomfield has to offer. Located in the highly desired five star School District. This wonderful home is situated on a quiet street, in great community with a nice pool and

Chuck Davis
303-918-8539
usnret95@aol.com



Scan code
for more
property
details

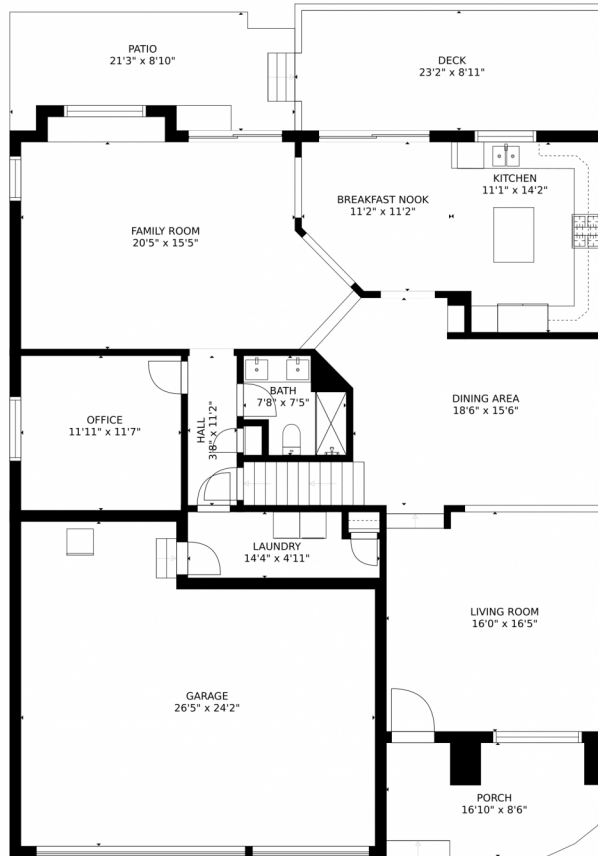


clubhouse. Don't miss out on this great opportunity to call this your home.



Chuck Davis
303-918-8539
usnret95@aol.com





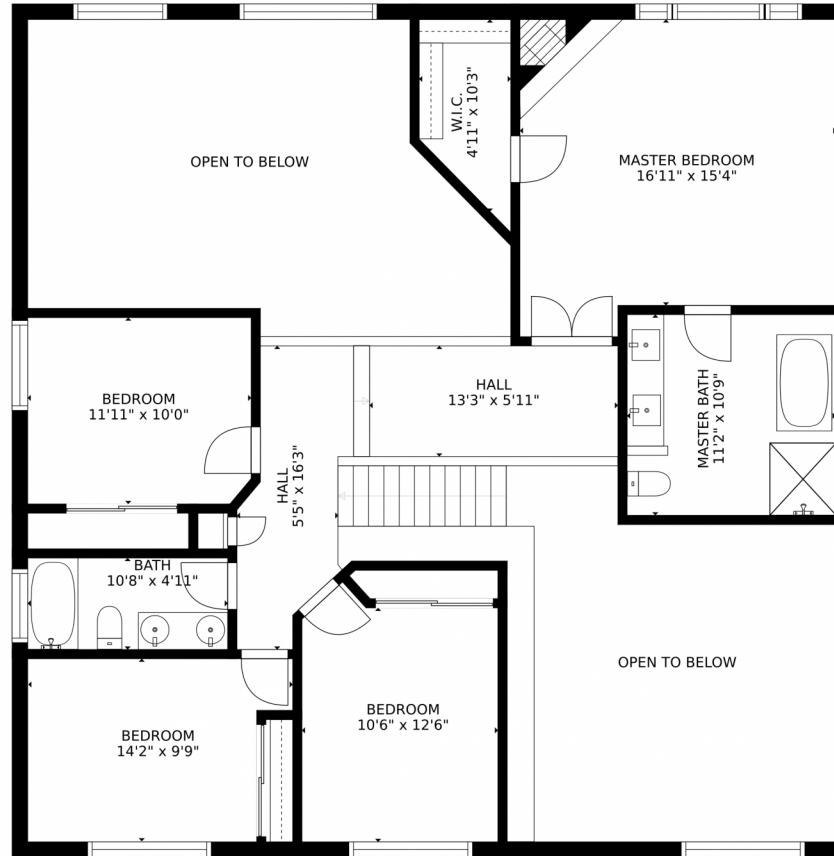
GROSS INTERNAL AREA
FLOOR 1: 1461 sq. ft. FLOOR 2: 1545 sq. ft.
FLOOR 3: 1199 sq. ft. EXCLUDED AREAS:
DECK: 205 sq. ft. PATIO: 165 sq. ft.
PORCH: 137 sq. ft. GARAGE: 566 sq. ft.
TOTAL: 4205 sq. ft.
SIZES AND DIMENSIONS ARE APPROXIMATE, ACTUAL MAY VARY.

Disclaimer: Sizes and Dimensions are Approximate, Actual May Vary.

Chuck Davis
303-918-8539
usnret95@aol.com



13853 Dogleg Lane, Broomfield, CO 80023 – 2nd Level



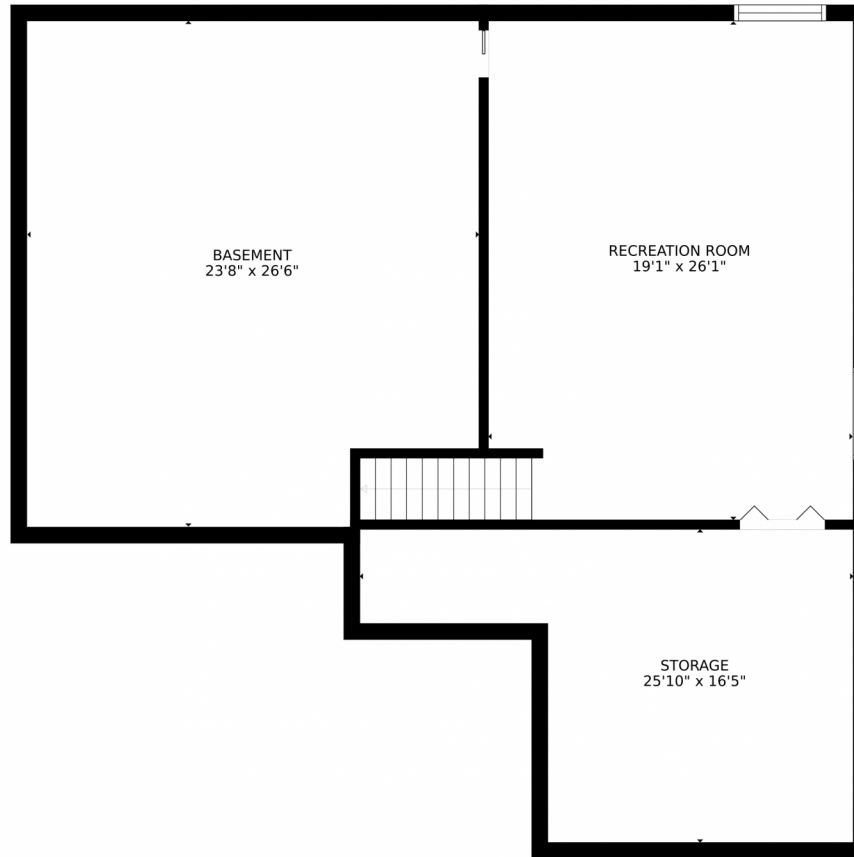
GROSS INTERNAL AREA
FLOOR 1: 1461 sq. ft, FLOOR 2: 1545 sq. ft
FLOOR 3: 1199 sq. ft, EXCLUDED AREAS:
DECK: 205 sq. ft, PATIO: 165 sq. ft
PORCH: 137 sq. ft, GARAGE: 566 sq. ft
TOTAL: 4205 sq. ft
SIZES AND DIMENSIONS ARE APPROXIMATE, ACTUAL MAY VARY.

Disclaimer: Sizes and Dimensions are Approximate, Actual May Vary.

Chuck Davis
303-918-8539
usnret95@aol.com



13853 Dogleg Lane, Broomfield, CO 80023 – Lower Level



GROSS INTERNAL AREA
FLOOR 1: 1461 sq. ft. FLOOR 2: 1545 sq. ft.
FLOOR 3: 1199 sq. ft. EXCLUDED AREAS:
DECK: 205 sq. ft. PATIO: 165 sq. ft.
PORCH: 137 sq. ft. GARAGE: 566 sq. ft.
TOTAL: 4205 sq. ft.
SIZES AND DIMENSIONS ARE APPROXIMATE, ACTUAL MAY VARY.

Disclaimer: Sizes and Dimensions are Approximate, Actual May Vary.

Chuck Davis
303-918-8539
usnret95@aol.com



13853 Dogleg Lane, Broomfield, CO 80023 – All Levels



GROSS INTERNAL AREA
FLOOR 1: 1461 sq. ft, FLOOR 2: 1545 sq. ft
FLOOR 3: 1199 sq. ft, EXCLUDED AREAS:
DECK: 205 sq. ft, PATIO: 165 sq. ft
PORCH: 137 sq. ft, GARAGE: 566 sq. ft
TOTAL: 4205 sq. ft
SIZES AND DIMENSIONS ARE APPROXIMATE, ACTUAL MAY VARY.

Disclaimer: Sizes and Dimensions are Approximate, Actual May Vary.

Chuck Davis
303-918-8539
usnret95@aol.com

