

6960 Battle Mountain Road
Colorado Springs, CO 80922

COMMUNITY: Northcrest

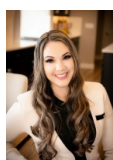
MLS # 2713051
PRICE \$385,000



 Single Family  2178 SQFT  3 Beds  2/1 Baths  2 Car  0 Acre

PROPERTY DETAILS

Perfectly set on a tree-shaded lot, this beauty feels like home the minute you pull up. The living room is warm and inviting, centered by a gas-burning fireplace. A spacious dining area looks out to the backyard and flows into the kitchen, where you'll find a kitchen peninsula perfect for entertaining. Not to mention a walk-in pantry with plenty of storage space. The master bedroom is large and includes private access to the bathroom for an owners retreat. Two additional bedrooms and one full bathroom complete the upper level. The basement is your open canvas! Bring your imagination and create the dream space you've always wanted. You'll enjoy the back patio both morning and night, so get your coffee and wine, and make this house your home.



Samantha Maldonado
719-499-2157
MontlorSam@gmail.com
<https://montlorsam.findme.homes>



6960 Battle Mountain Road, Colorado Springs, CO 80922 – All Levels



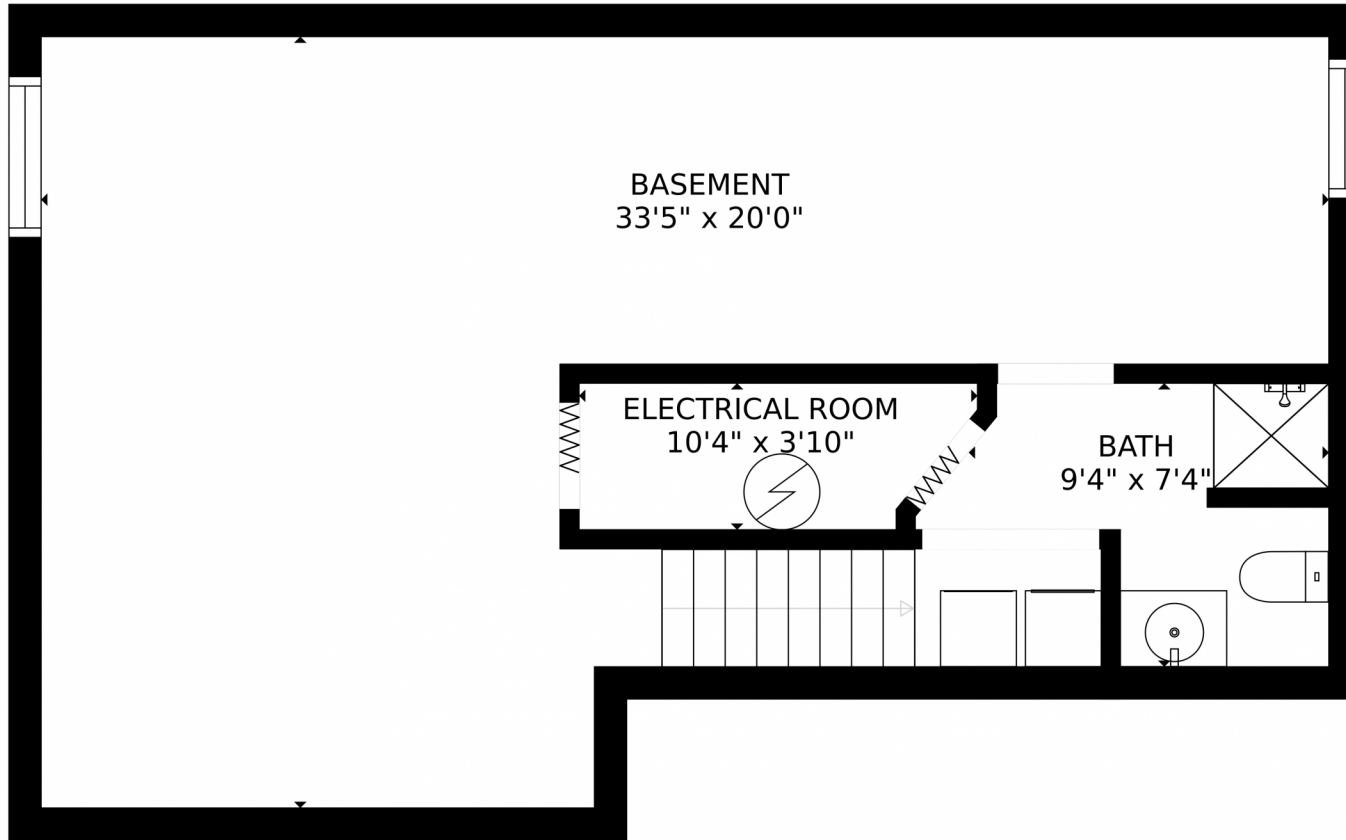
GROSS INTERNAL AREA
FLOOR 1: 599 sq. ft. FLOOR 2: 710 sq. ft
FLOOR 3: 685 sq. ft. EXCLUDED AREAS:
PATIO: 47 sq. ft. PORCH: 25 sq. ft
GARAGE: 363 sq. ft
TOTAL: 1994 sq. ft
SIZES AND DIMENSIONS ARE APPROXIMATE, ACTUAL MAY VARY.

Disclaimer: Sizes and Dimensions are Approximate, Actual May Vary.



Samantha Maldonado
719-499-2157
MontlorSam@gmail.com
<https://montlorsam.findme.homes>





GROSS INTERNAL AREA
FLOOR 1: 599 sq. ft, FLOOR 2: 710 sq. ft
FLOOR 3: 685 sq. ft, EXCLUDED AREAS:
PATIO: 47 sq. ft, PORCH: 25 sq. ft
GARAGE: 363 sq. ft
TOTAL: 1994 sq. ft
SIZES AND DIMENSIONS ARE APPROXIMATE, ACTUAL MAY VARY.

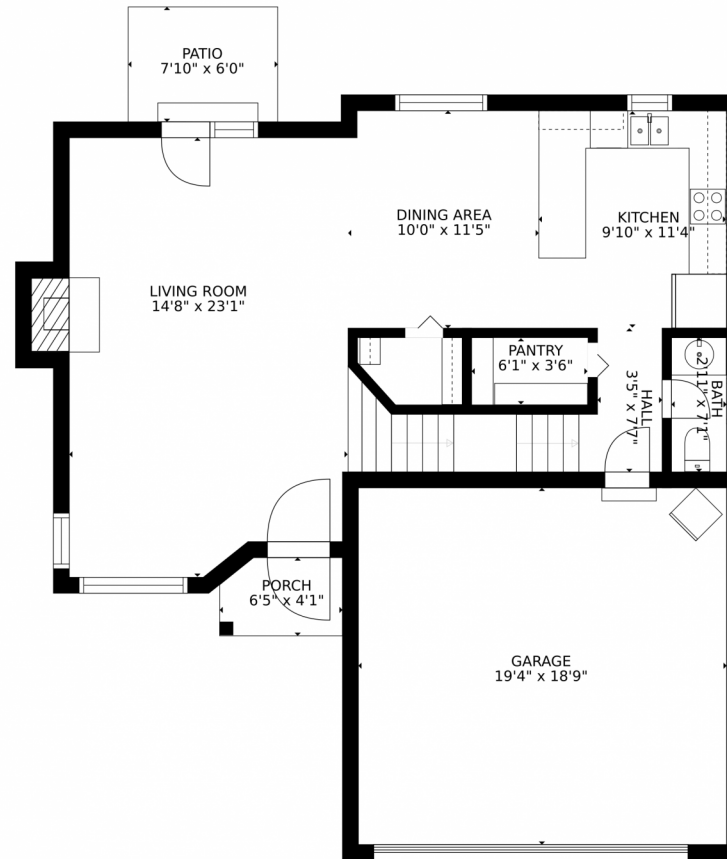
Disclaimer: Sizes and Dimensions are Approximate, Actual May Vary.



Samantha Maldonado
719-499-2157
MontlorSam@gmail.com
<https://montlorsam.findme.homes>



6960 Battle Mountain Road, Colorado Springs, CO 80922 – Main Level



GROSS INTERNAL AREA
FLOOR 1: 599 sq. ft. FLOOR 2: 710 sq. ft.
FLOOR 3: 685 sq. ft. EXCLUDED AREAS:
PATIO: 47 sq. ft. PORCH: 25 sq. ft.
GARAGE: 363 sq. ft.
TOTAL: 1994 sq. ft.
SIZES AND DIMENSIONS ARE APPROXIMATE, ACTUAL MAY VARY.

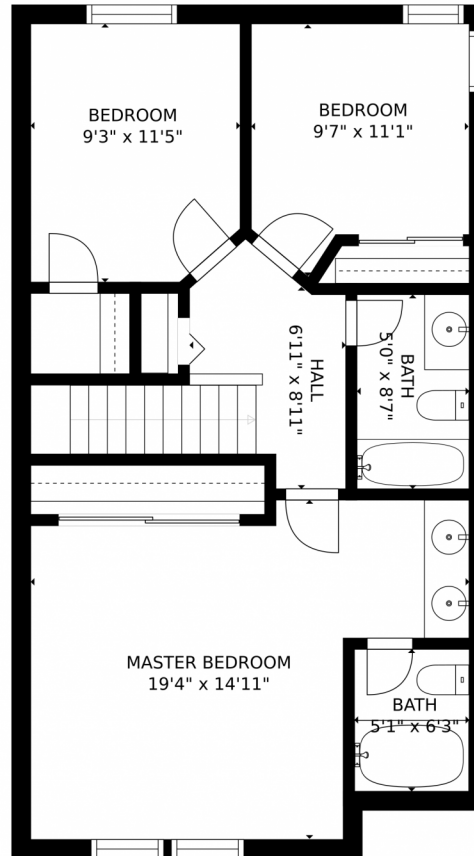
Disclaimer: Sizes and Dimensions are Approximate, Actual May Vary.



Samantha Maldonado
719-499-2157
MontlorSam@gmail.com
<https://montlorsam.findme.homes>



6960 Battle Mountain Road, Colorado Springs, CO 80922 — 2nd Level



GROSS INTERNAL AREA
FLOOR 1: 599 sq. ft. FLOOR 2: 710 sq. ft
FLOOR 3: 685 sq. ft. EXCLUDED AREAS:
PATIO: 47 sq. ft. PORCH: 25 sq. ft
GARAGE: 363 sq. ft
TOTAL: 1994 sq. ft
SIZES AND DIMENSIONS ARE APPROXIMATE, ACTUAL MAY VARY.

Disclaimer: Sizes and Dimensions are Approximate, Actual May Vary.



Samantha Maldonado
719-499-2157
MontlorSam@gmail.com
<https://montlorsam.findme.homes>



Scan code
for more
property
details

