



 Single Family

 1888 SQFT

 4 Beds

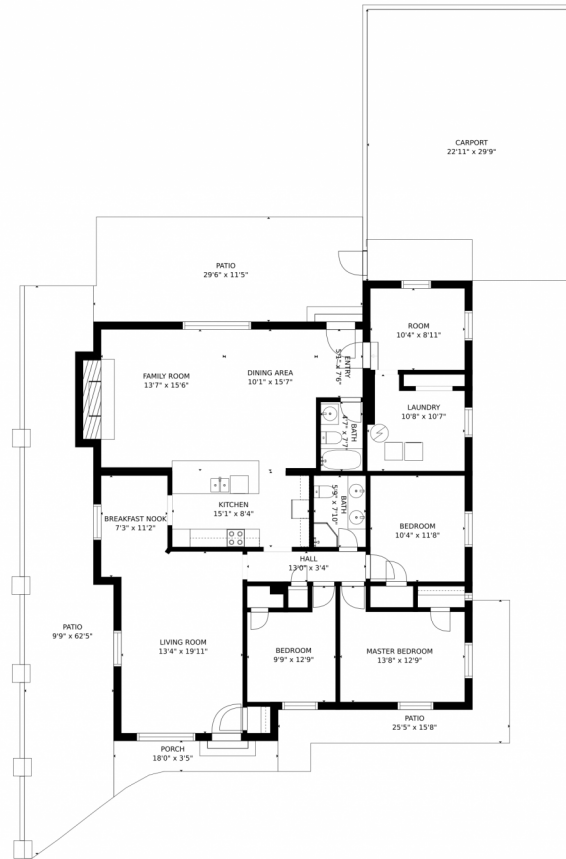
 2 Baths



Taylor Haas
303-665-7368
taylorh@coloradorpm.com
<https://www.coloradorpm.com/available-rental-properties-denver>



3165 Ingalls Street, Wheat Ridge, CO 80214 – Floor Plan



GROSS INTERNAL AREA
FLOOR 1: 1723 sq. ft, EXCLUDED AREAS:
PATIO: 985 sq. ft, PORCH: 67 sq. ft
TOTAL: 1723 sq. ft
SIZES AND DIMENSIONS ARE APPROXIMATE, ACTUAL MAY VARY.

Disclaimer: Sizes and Dimensions are Approximate, Actual May Vary.



Taylor Haas
303-665-7368
taylorh@coloradorpm.com
<https://www.coloradorpm.com/available-rental-properties-denver>

