



 Single Family

 1800 SQFT

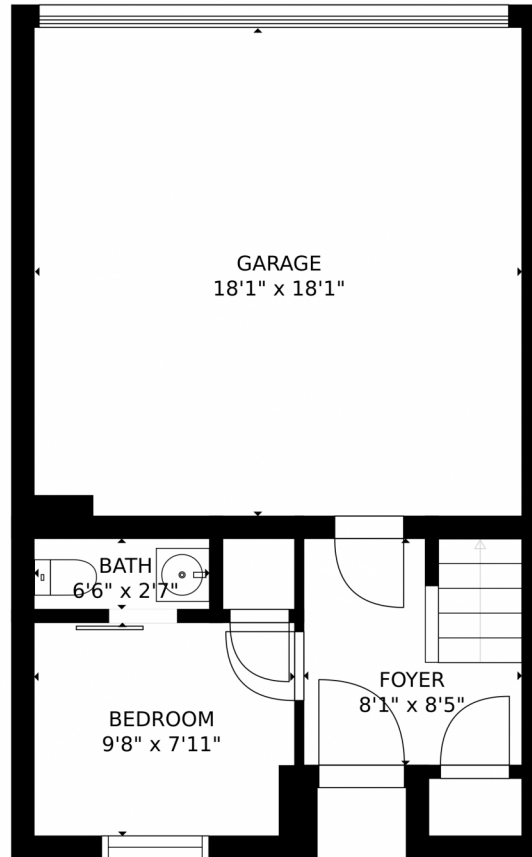
 3 Beds

 3/1 Baths



Taylor Haas
303-665-7368
taylorh@coloradorpm.com
<https://www.coloradorpm.com/available-rental-properties-denver>





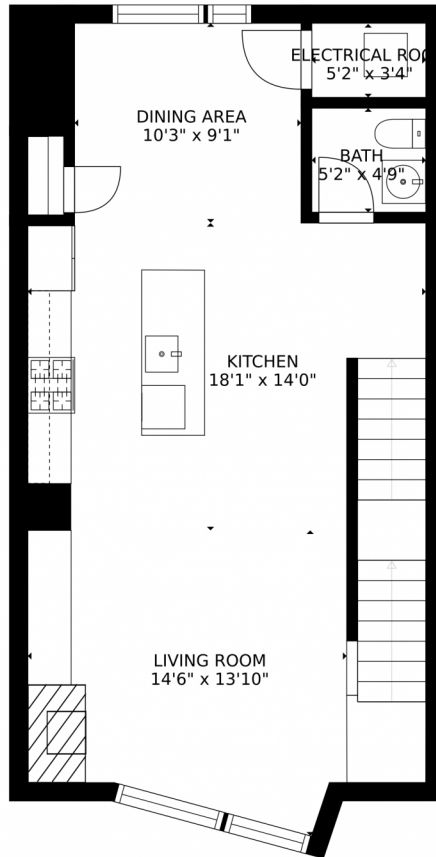
GROSS INTERNAL AREA
FLOOR 1: 186 sq. ft. FLOOR 2: 636 sq. ft.
FLOOR 3: 669 sq. ft. FLOOR 4: 124 sq. ft.
EXCLUDED AREAS: GARAGE: 328 sq. ft.
TERRACE: 204 sq. ft.
TOTAL: 1615 sq. ft.
SIZES AND DIMENSIONS ARE APPROXIMATE, ACTUAL MAY VARY.

Disclaimer: Sizes and Dimensions are Approximate, Actual May Vary.



Taylor Haas
303-665-7368
taylorh@coloradorpm.com
<https://www.coloradorpm.com/available-rental-properties-denver>





GROSS INTERNAL AREA
FLOOR 1: 186 sq. ft. FLOOR 2: 636 sq. ft.
FLOOR 3: 669 sq. ft. FLOOR 4: 124 sq. ft.
EXCLUDED AREAS: GARAGE: 328 sq. ft.
TERRACE: 204 sq. ft.
TOTAL: 1615 sq. ft.
SIZES AND DIMENSIONS ARE APPROXIMATE, ACTUAL MAY VARY.

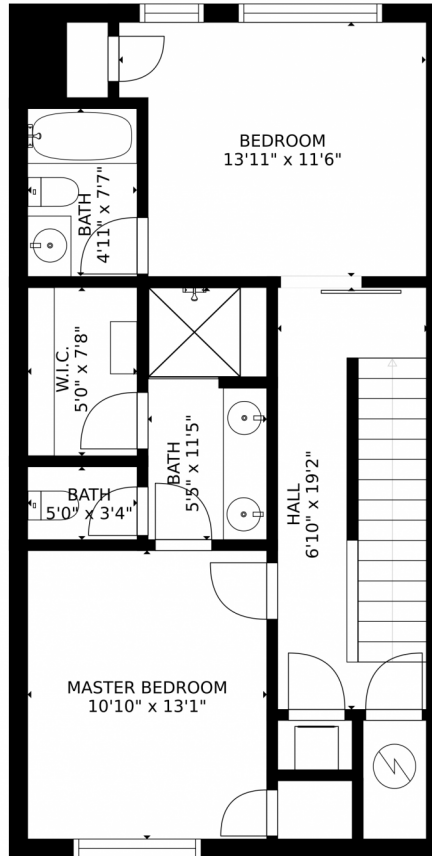
Disclaimer: Sizes and Dimensions are Approximate, Actual May Vary.



Taylor Haas
303-665-7368
taylorh@coloradorpm.com
<https://www.coloradorpm.com/available-rental-properties-denver>



3205 Shoshone Street, Denver, CO 80211 – Floor 3



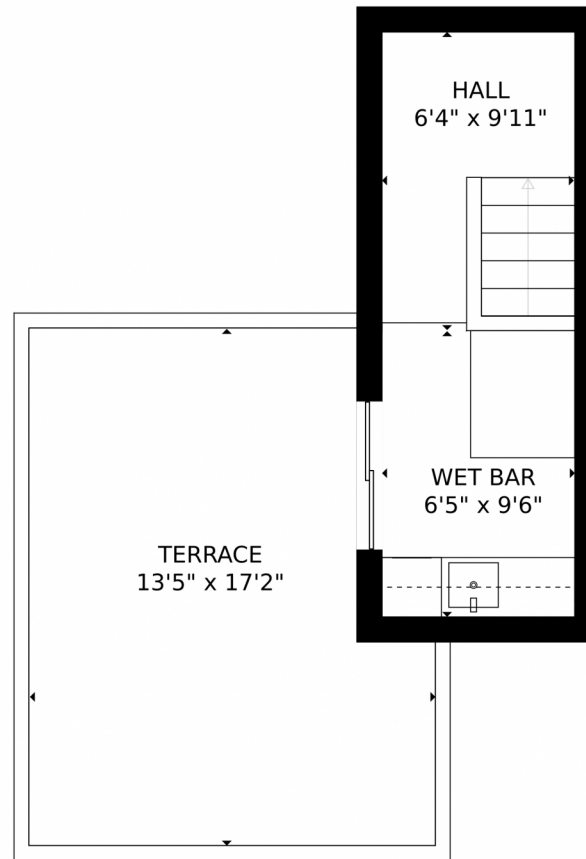
GROSS INTERNAL AREA
FLOOR 1: 186 sq. ft. FLOOR 2: 636 sq. ft.
FLOOR 3: 669 sq. ft. FLOOR 4: 124 sq. ft.
EXCLUDED AREAS: GARAGE: 328 sq. ft.
TERRACE: 204 sq. ft.
TOTAL: 1615 sq. ft.
SIZES AND DIMENSIONS ARE APPROXIMATE, ACTUAL MAY VARY.

Disclaimer: Sizes and Dimensions are Approximate, Actual May Vary.



Taylor Haas
303-665-7368
taylorh@coloradorpm.com
<https://www.coloradorpm.com/available-rental-properties-denver>





GROSS INTERNAL AREA
FLOOR 1: 186 sq. ft. FLOOR 2: 636 sq. ft.
FLOOR 3: 669 sq. ft. FLOOR 4: 124 sq. ft.
EXCLUDED AREAS: GARAGE: 328 sq. ft.
TERRACE: 204 sq. ft.
TOTAL: 1615 sq. ft.
SIZES AND DIMENSIONS ARE APPROXIMATE, ACTUAL MAY VARY.

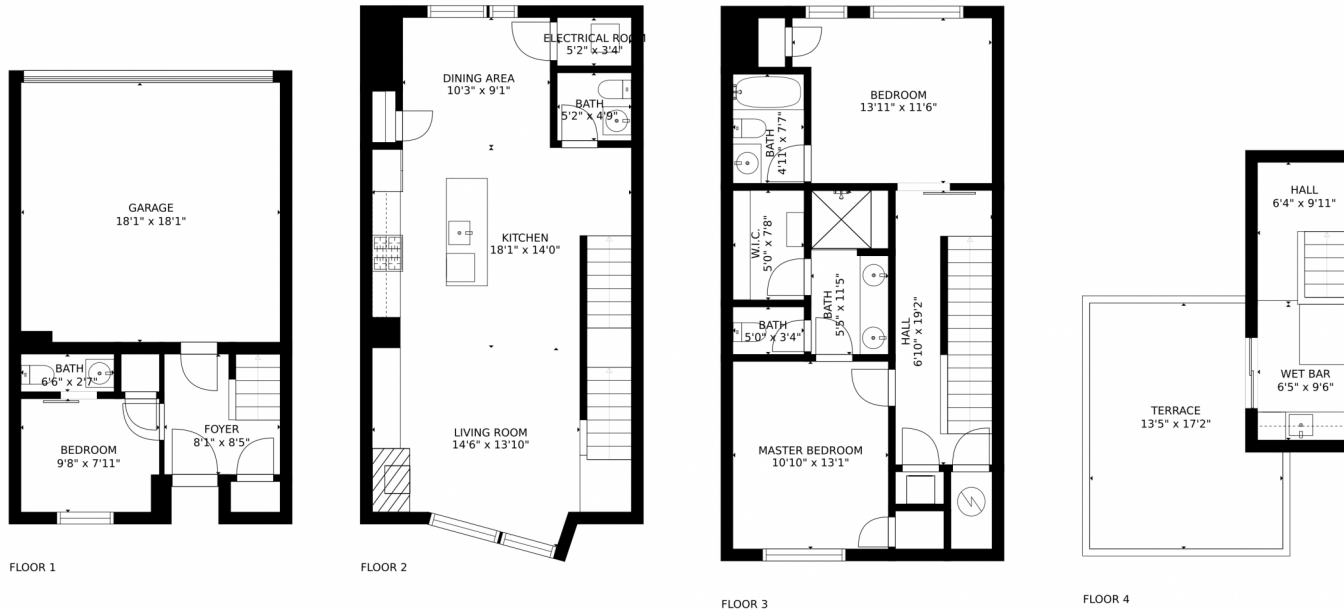
Disclaimer: Sizes and Dimensions are Approximate, Actual May Vary.



Taylor Haas
303-665-7368
taylorh@coloradorpm.com
<https://www.coloradorpm.com/available-rental-properties-denver>



3205 Shoshone Street, Denver, CO 80211 – All Floors



GROSS INTERNAL AREA
FLOOR 1: 186 sq. ft. FLOOR 2: 636 sq. ft.
FLOOR 3: 669 sq. ft. FLOOR 4: 124 sq. ft.
EXCLUDED AREAS: GARAGE: 328 sq. ft.
TERRACE: 204 sq. ft.
TOTAL: 1615 sq. ft.
SIZES AND DIMENSIONS ARE APPROXIMATE, ACTUAL MAY VARY.

Disclaimer: Sizes and Dimensions are Approximate, Actual May Vary.



Taylor Haas
303-665-7368
taylorh@coloradorpm.com
<https://www.coloradorpm.com/available-rental-properties-denver>

