



11026 Lima Street
Henderson, CO 80640

MLS # 2100913
PRICE \$550,000



Single Family



3950 SQFT



3 Beds



2/1 Baths



3 Car



0.2 Acre

PROPERTY DETAILS

Gorgeous home, Beautiful featured throughout, open floor plans, maintained & updated. Formal Front room & Dining room, plus eat in kitchen with large Kitchen Island (extra tall) perfect for bar stool seating, Touchless faucet, Large Pantry, Solid Hardwood Floors, Marble and Silestone counters, Large Loft & built in workspace, Office with Glass pane French doors, Stainless steel appliances, Gas Stove w/oven, double ovens (3 ovens), Vaulted Ceilings, New Driveway flat work, French drain for down spouts in front and back, Open unfinished basement with rough in plumbing. Window Coverings. Mountain Views from Front porch. Cement Back patio, Yard Pergola stays. Roof Replaced 2006 asphalt shingle 40 yr, Each Bedroom has a Walk in Closets, Primary has 2 Walk in Closets w/ 5 piece bath, and Jacuzzi jetted tub. Large lot. 3rd bay Tandem garage ideal for workshop. Metro District cover trash & recycling. Perfect for entertaining inside and out.



Denise Tschida

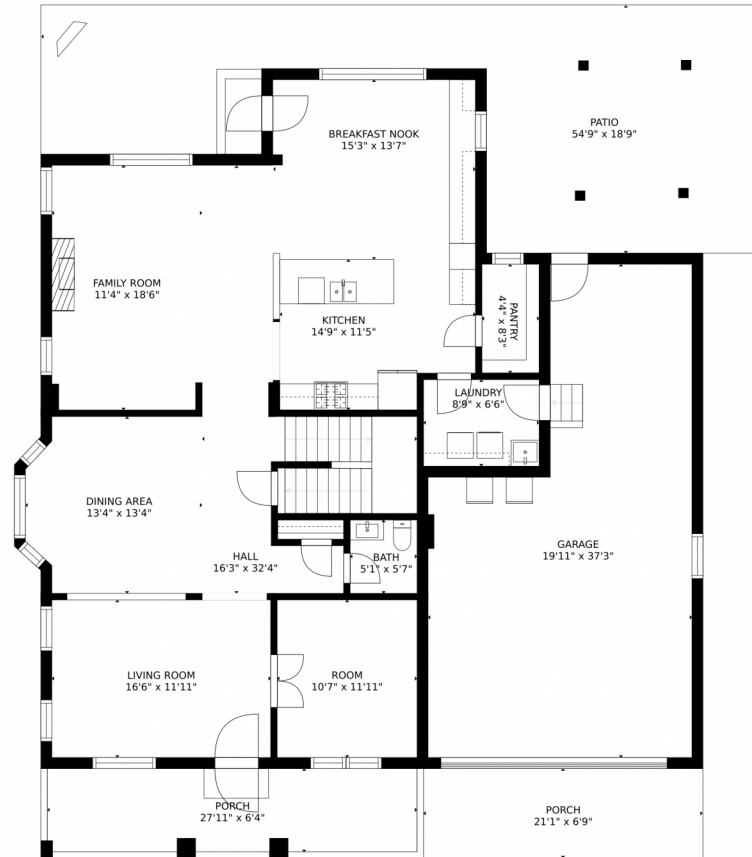
303-918-9375

denise@ortizandassociatesinc.com



Scan code
for more
property
details





GROSS INTERNAL AREA
FLOOR 1: 711 sq. ft, FLOOR 2: 1522 sq. ft
FLOOR 3: 1549 sq. ft, EXCLUDED AREAS:
PATIO: 665 sq. ft, PORCH: 319 sq. ft
GARAGE: 594 sq. ft
TOTAL: 3781 sq. ft
SIZES AND DIMENSIONS ARE APPROXIMATE, ACTUAL MAY VARY.

Disclaimer: Sizes and Dimensions are Approximate, Actual May Vary.

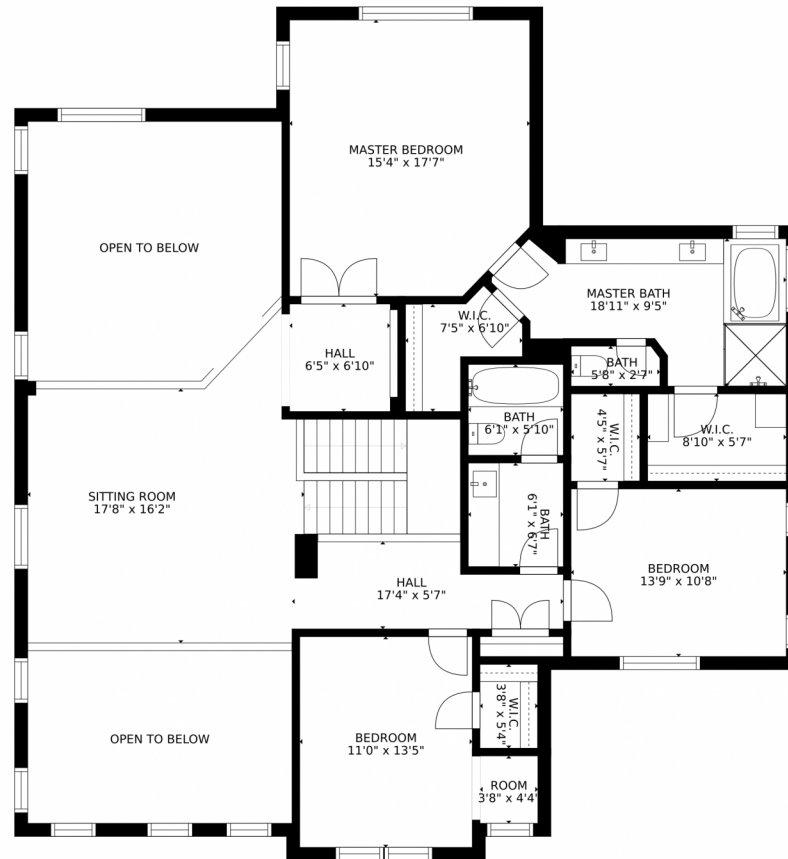


Denise Tschida
303-918-9375
denise@ortizandassociatesinc.com



Scan code
for more
property
details

11026 Lima Street, Henderson, CO 80640 – 2nd Level



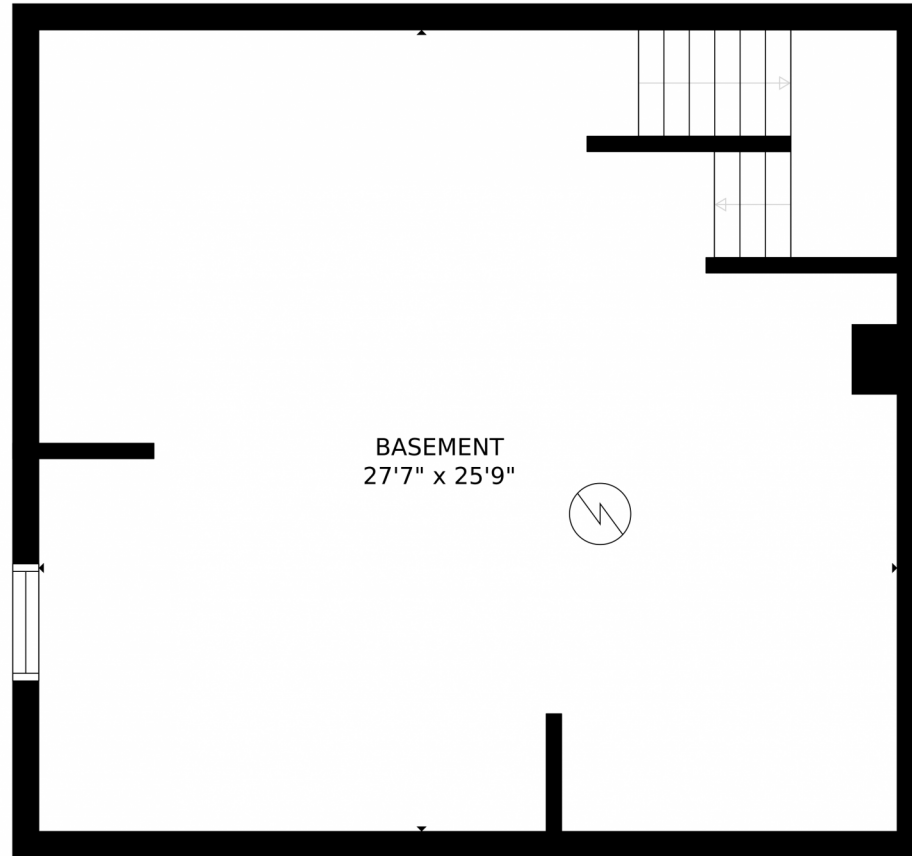
GROSS INTERNAL AREA
FLOOR 1: 711 sq. ft, FLOOR 2: 1522 sq. ft
FLOOR 3: 1549 sq. ft, EXCLUDED AREAS:
PATIO: 665 sq. ft, PORCH: 319 sq. ft
GARAGE: 594 sq. ft
TOTAL: 3781 sq. ft
SIZES AND DIMENSIONS ARE APPROXIMATE, ACTUAL MAY VARY.

Disclaimer: Sizes and Dimensions are Approximate, Actual May Vary.



Denise Tschida
303-918-9375
denise@ortizandassociatesinc.com





GROSS INTERNAL AREA
FLOOR 1: 711 sq. ft, FLOOR 2: 1522 sq. ft
FLOOR 3: 1549 sq. ft, EXCLUDED AREAS:
PATIO: 665 sq. ft, PORCH: 319 sq. ft
GARAGE: 594 sq. ft
TOTAL: 3781 sq. ft
SIZES AND DIMENSIONS ARE APPROXIMATE, ACTUAL MAY VARY.

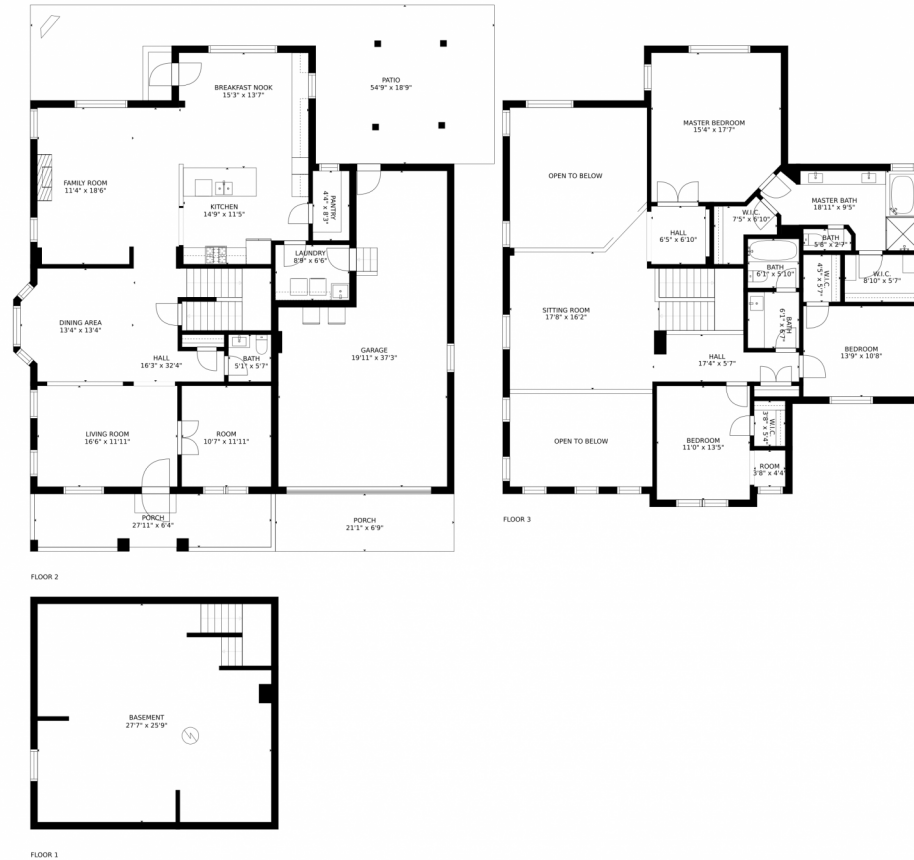
Disclaimer: Sizes and Dimensions are Approximate, Actual May Vary.



Denise Tschida
303-918-9375
denise@ortizandassociatesinc.com



11026 Lima Street, Henderson, CO 80640 – All Levels



GROSS INTERNAL AREA
FLOOR 1: 711 sq. ft, FLOOR 2: 1522 sq. ft
FLOOR 3: 1549 sq. ft, EXCLUDED AREAS:
PATIO: 665 sq. ft, PORCH: 319 sq. ft
GARAGE: 594 sq. ft
TOTAL: 3781 sq. ft
SIZES AND DIMENSIONS ARE APPROXIMATE, ACTUAL MAY VARY.

Disclaimer: Sizes and Dimensions are Approximate, Actual May Vary.



Denise Tschida
303-918-9375
denise@ortizandassociatesinc.com



Scan code
for more
property
details