



11721 West 52nd Avenue
Wheat Ridge, CO 80033

MLS # 7530537
PRICE \$2

Coming Soon - Equestrian Paradise with perfectly maintained residence



Farm/Ranch



13000 SQFT



4 Beds



3 Baths



4 Car



2.49 Acre

PROPERTY DETAILS

Welcome to 11721 West 52nd Avenue, Wheat Ridge, CO 80033! This stunning Farm/Ranch property offers a spacious living space of 13,000 sqft, with 4 bedrooms and 3 full bathrooms. The property features a 4-car garage, a beautiful garden, and a playground for outdoor enjoyment. Inside, you'll find a light and airy living room, a chef's dream kitchen, cozy bedrooms, and well-appointed bathrooms. Located in a desirable community, this property offers access to nearby amenities and a strong sense of community. Don't miss out on this amazing opportunity to make this your dream home!

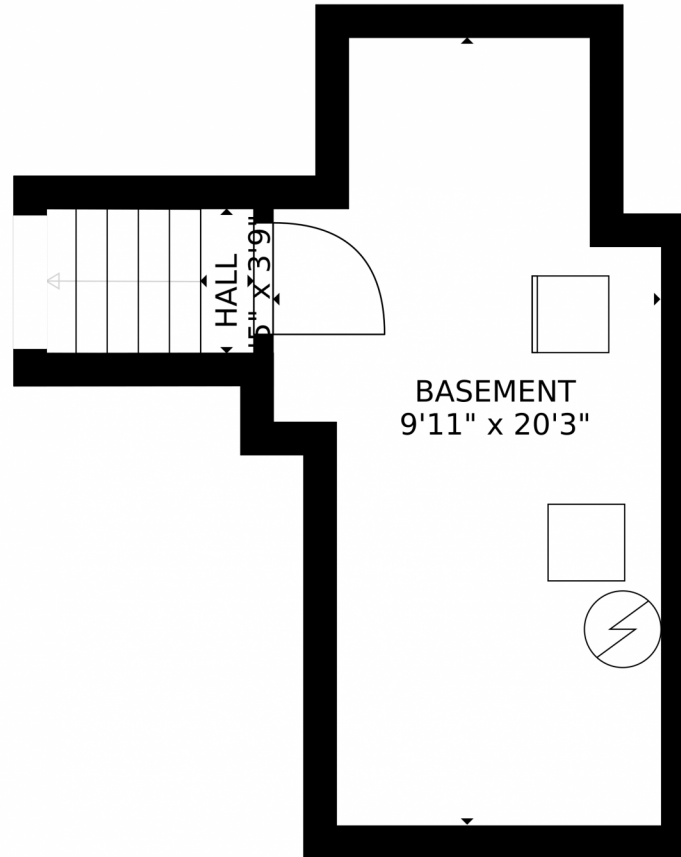


Ashley King
303-585-1380
thekingsrealestatecolorado@gmail.com



Scan code
for more
property
details





Estimated areas

GLA FLOOR 1: 0 sq. ft, excluded 252 sq. ft
GLA FLOOR 2: 2277 sq. ft, excluded 2322 sq. ft
GLA FLOOR 3: 690 sq. ft, excluded 599 sq. ft
Total GLA 2967 sq. ft, total scanned area 6140 sq. ft

SIZES AND DIMENSIONS ARE APPROXIMATE, ACTUAL MAY VARY.



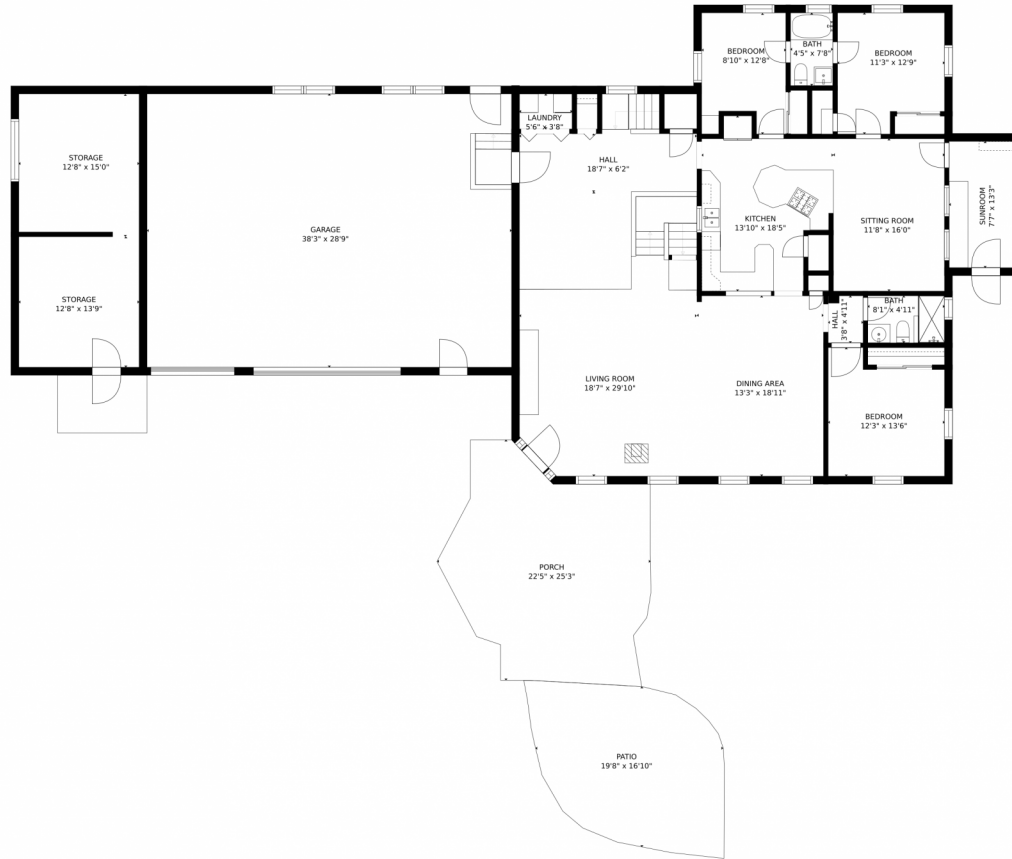
Disclaimer: Sizes and Dimensions are Approximate, Actual May Vary.



Ashley King
303-585-1380
thekingsrealestatecolorado@gmail.com



11721 West 52nd Avenue, Wheat Ridge, CO 80033 – Main Level



Estimated areas

GLA FLOOR 1: 0 sq. ft., excluded 252 sq. ft.
GLA FLOOR 2: 2277 sq. ft., excluded 232 sq. ft.
GLA FLOOR 3: 690 sq. ft., excluded 599 sq. ft.
Total GLA 2967 sq. ft., total scanned area 6140 sq. ft.

SIZES AND DIMENSIONS ARE APPROXIMATE, ACTUAL MAY VARY.

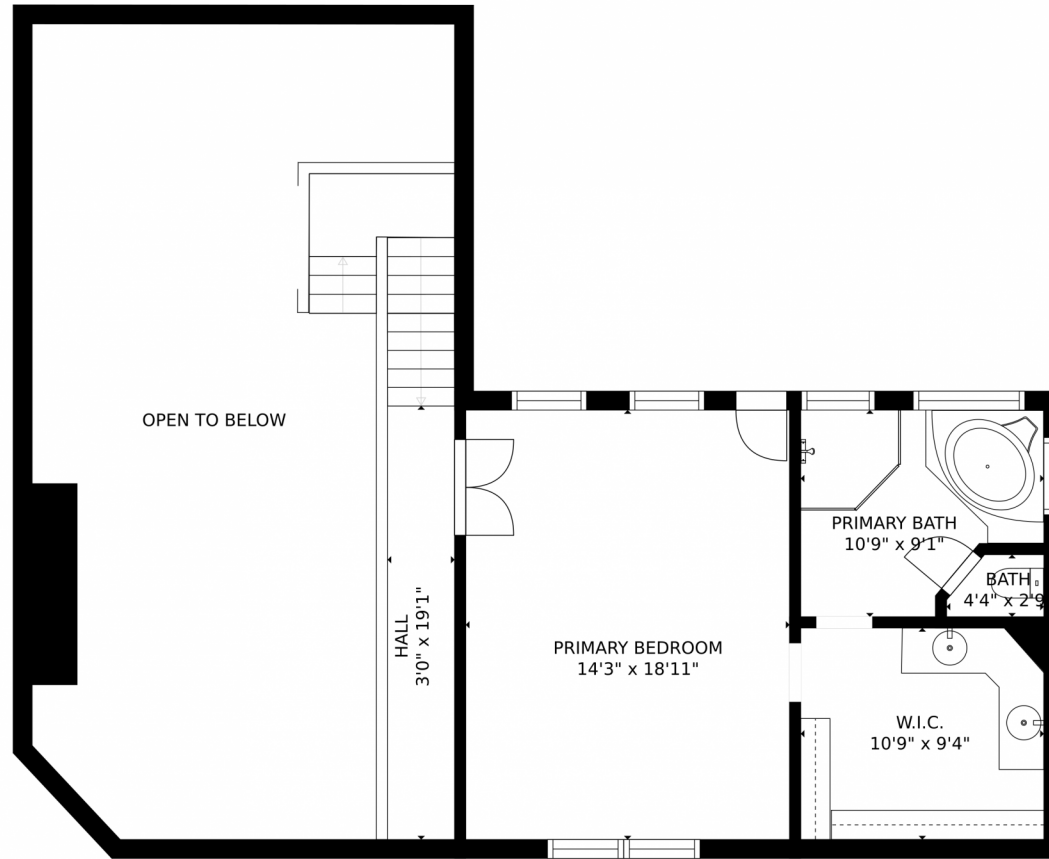


Disclaimer: Sizes and Dimensions are Approximate, Actual May Vary.



Ashley King
303-585-1380
thekingsrealestatecolorado@gmail.com





Estimated areas

GLA FLOOR 1: 0 sq. ft, excluded 252 sq. ft
GLA FLOOR 2: 2277 sq. ft, excluded 232 sq. ft
GLA FLOOR 3: 690 sq. ft, excluded 599 sq. ft
Total GLA 2967 sq. ft, total scanned area 6140 sq. ft

SIZES AND DIMENSIONS ARE APPROXIMATE, ACTUAL MAY VARY.



Disclaimer: Sizes and Dimensions are Approximate, Actual May Vary.



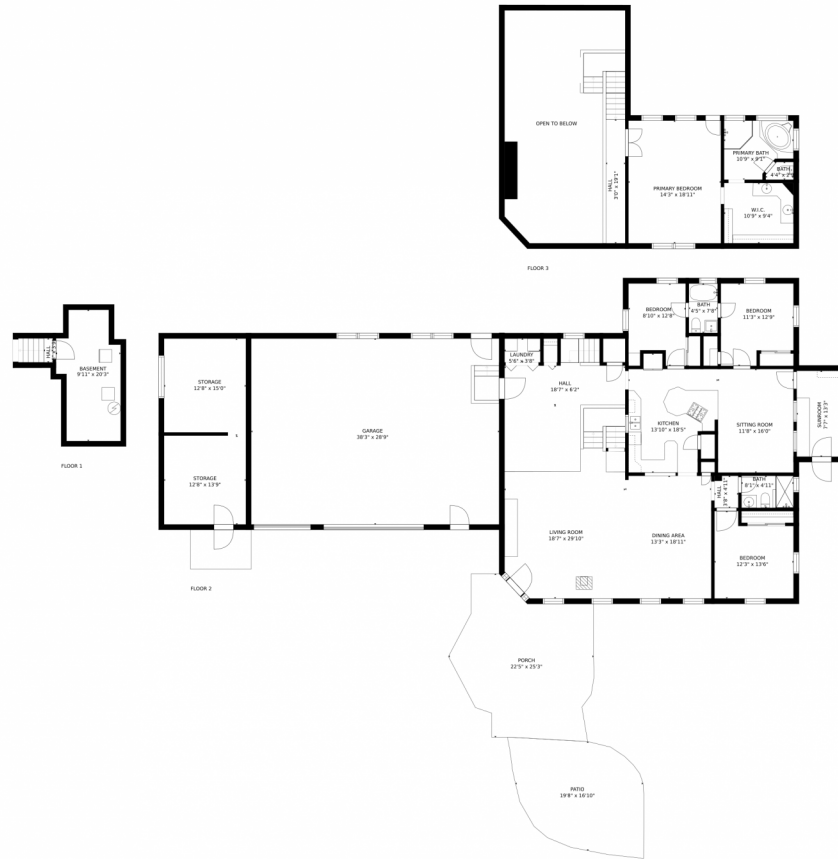
Ashley King
303-585-1380
thekingsrealestatecolorado@gmail.com



Scan code for more property details



11721 West 52nd Avenue, Wheat Ridge, CO 80033 – All Levels - Home



Estimated areas
GLA FLOOR 1: 0 sq. ft, excluded 252 sq. ft
GLA FLOOR 2: 2277 sq. ft, excluded 2322 sq. ft
GLA FLOOR 3: 690 sq. ft, excluded 599 sq. ft
Total GLA 2967 sq. ft, total scanned area 6140 sq. ft

SIZES AND DIMENSIONS ARE APPROXIMATE, ACTUAL MAY VARY.



Disclaimer: Sizes and Dimensions are Approximate, Actual May Vary.



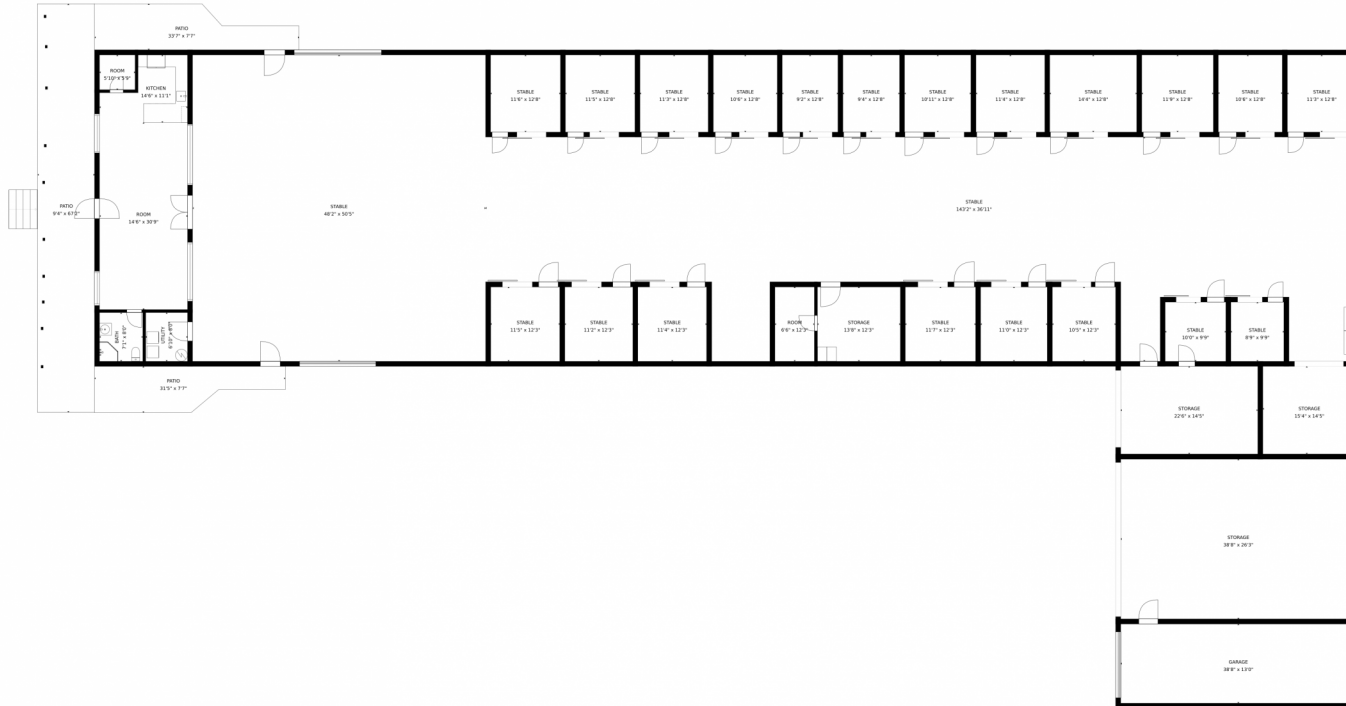
Ashley King
303-585-1380
thekingsrealestatecolorado@gmail.com



Scan code for more property details



11721 West 52nd Avenue, Wheat Ridge, CO 80033 — Barn



Estimated areas
GLA FLOOR 1: 772 sq. ft, excluded 13364 sq. ft
Total GLA 772 sq. ft, total scanned area 14136 sq. ft

SIZES AND DIMENSIONS ARE APPROXIMATE, ACTUAL MAY VARY.



Disclaimer: Sizes and Dimensions are Approximate, Actual May Vary.



Ashley King
303-585-1380
thekingsrealestatecolorado@gmail.com



Scan code for more property details

