



160 Monaco Parkway
 Denver, CO 80220
 COMMUNITY: Mayfair

MLS # 5622419
 PRICE \$799,000



Single Family



1984 SQFT



3 Beds



2 Baths



2 Car



0.25 Acre

PROPERTY DETAILS

This classic, spacious ranch in Mayfair is move in ready and in the middle of it all. Located across from Crestmoor Park and close to many conveniences and services at Lowry Town Center and Boulevard One for dining, shopping convenience, health & personal services as well as the library. Maybe take a night out for concert or a movie at Sunset Park. The house itself offers main floor living at its finest including three large bedrooms, two updated bathrooms, remodeled kitchen, office, dining/hearth room with new fireplace, entertainment spaces, laundry and attached 2 car garage. The crisp, clean surfaces in the new kitchen make chopping and prepping a culinary dream. Reap the rewards of your culinary adventures in the cozy dining room with a new fireplace insert and modern lighting that invite story telling and memories. End the day retiring to the peaceful primary bedroom for some quality rest then start the next day off fresh with the bathroom's eye catching updated bright and classic design. Depending on the season, spread out for some summer fun full of games and activities or build your best snow sculpture in the vast, private yard. New, more efficient replacements of the following items completed in the last 6 years: windows, roof, fireplace, water heater, swamp cooler, kitchen appliances, kitchen cabinets, bathroom upgrades, fencing and automatic gate. The new stove is electric, but there is a connection for gas as well as a vent in case a gas range and oven



Rebecca Jennings
 303-507-5235
 rebecca.jennings@yahoo.com



Scan code
 for more
 property
 details



are your hot buttons.



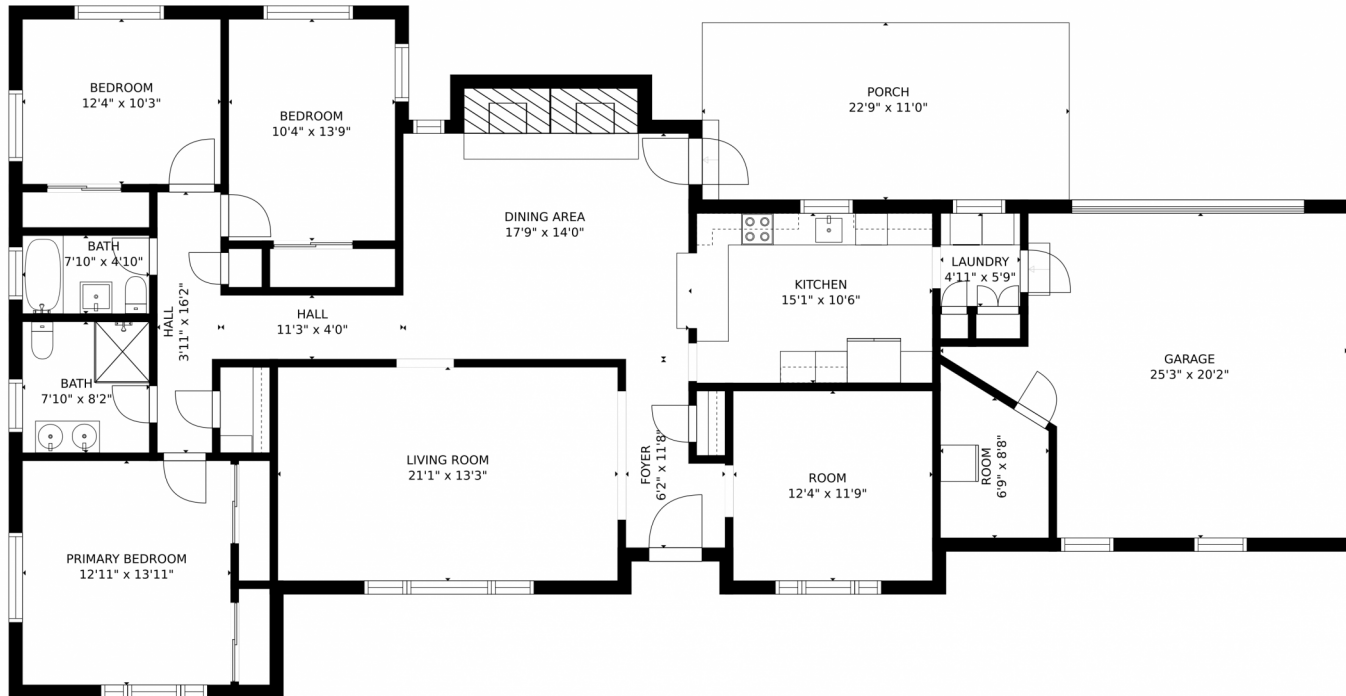
Rebecca Jennings
303-507-5235
rebecca.jennings@yahoo.com



Scan code
for more
property
details



160 Monaco Parkway, Denver, CO 80220 – 160Monaco Street Pkwy-all-in-one-dim_0



GROSS INTERNAL AREA
FLOOR 1: 1877 sq. ft. EXCLUDED AREAS:
GARAGE: 398 sq. ft. PORCH: 250 sq. ft.
TOTAL: 1877 sq. ft.
SIZES AND DIMENSIONS ARE APPROXIMATE, ACTUAL MAY VARY.



Disclaimer: Sizes and Dimensions are Approximate, Actual May Vary.



Rebecca Jennings
303-507-5235
rebecca.jennings@yahoo.com



Scan code for more property details

