

16270 Forest Light Road  
Colorado Springs, CO 80908



Single Family



12482 SQFT



8 Beds



7/1 Baths



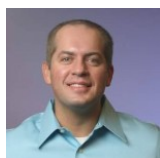
6 Car



3.44 Acre

## PROPERTY DETAILS

Welcome to 16270 Forest Light Road in Colorado Springs, CO! This stunning single-family home offers 12,482 sqft of living space, providing plenty of room for you and your family. The property boasts a prairie-style exterior, creating a timeless and elegant look. Inside, you'll find a beautiful entrance foyer, a chef's dream kitchen, a cozy living room, spacious bedrooms, and a fantastic patio with an outdoor kitchen. The property also features a basketball court, perfect for staying active. Located in a friendly community, this property offers the perfect blend of luxury and comfort. Don't miss out on this incredible opportunity!



**Chris L. Anderson**  
719-761-7036  
chrisa3681@gmail.com



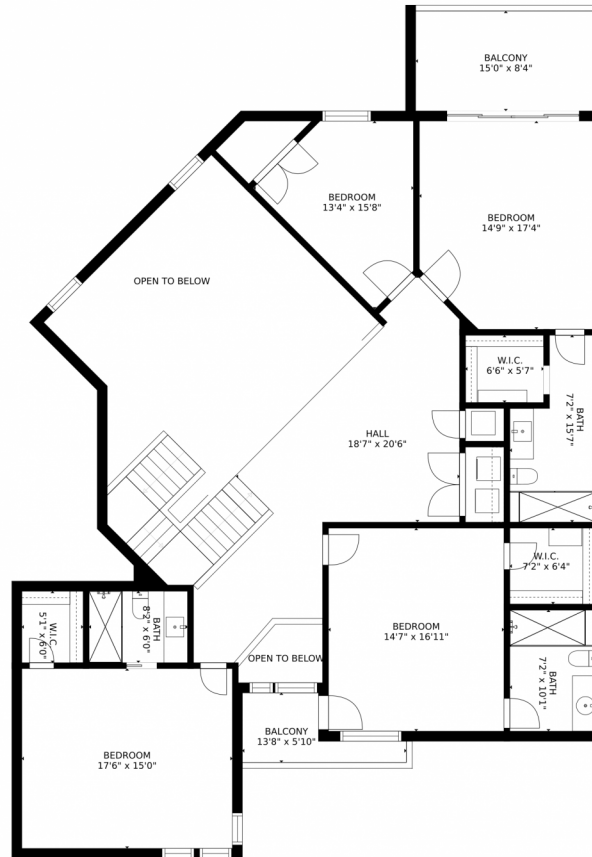
Scan code  
for more  
property  
details







# 16270 Forest Light Road, Colorado Springs, CO 80908 – 2nd Level



GROSS INTERNAL AREA  
FLOOR 1: 7100 sq. ft. FLOOR 2: 3854 sq. ft.  
FLOOR 3: 1801 sq. ft. EXCLUDED AREAS:  
PATIO: 1461 sq. ft. GARAGE: 2280 sq. ft.  
BALCONY: 1355 sq. ft. PORCH: 62 sq. ft.  
TOTAL: 12755 sq. ft.  
SIZES AND DIMENSIONS ARE APPROXIMATE, ACTUAL MAY VARY.



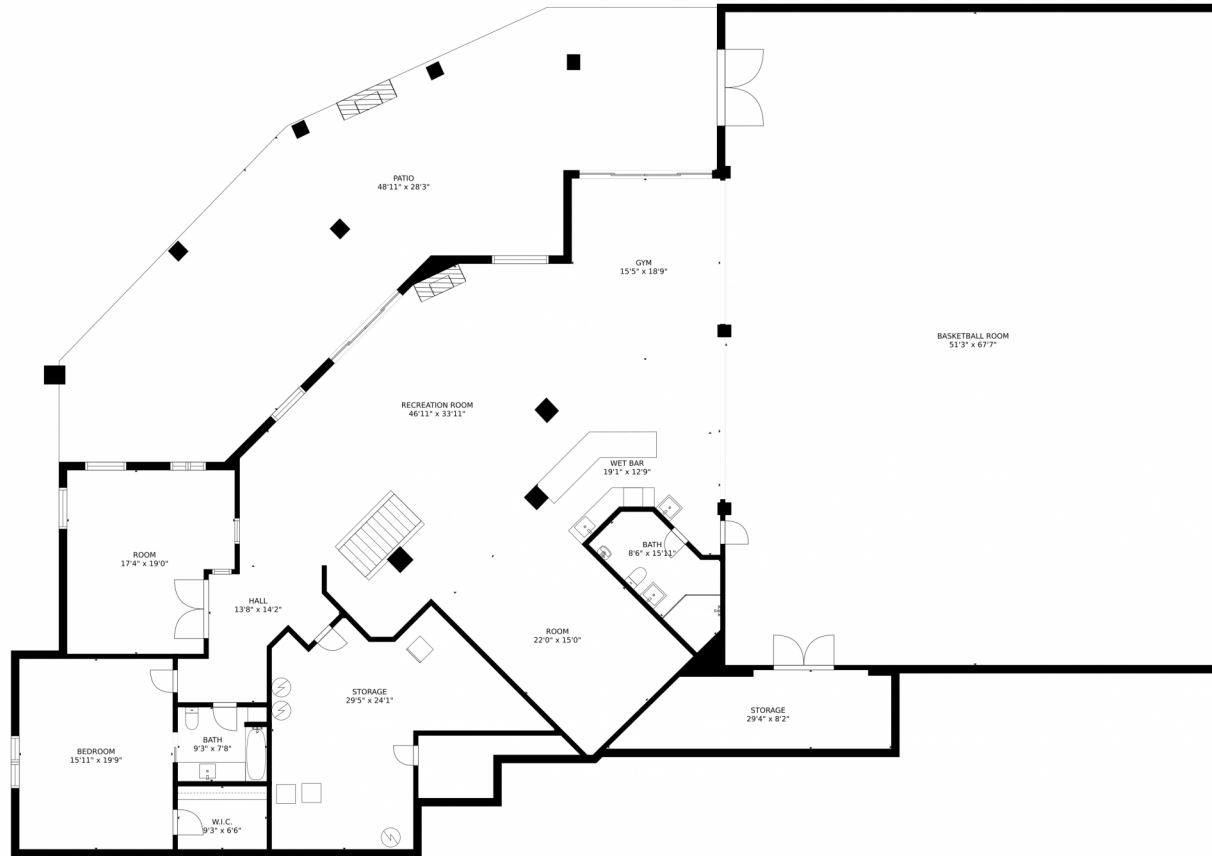
Disclaimer: Sizes and Dimensions are Approximate, Actual May Vary.



**Chris L. Anderson**  
719-761-7036  
chrisa3681@gmail.com



# 16270 Forest Light Road, Colorado Springs, CO 80908 – Lower Level



GROSS INTERNAL AREA  
FLOOR 1: 7100 sq. ft. FLOOR 2: 3854 sq. ft.  
FLOOR 3: 1801 sq. ft. EXCLUDED AREAS:  
PATIO: 1461 sq. ft. GARAGE: 2280 sq. ft.  
BALCONY: 1355 sq. ft. PORCH: 62 sq. ft.  
TOTAL: 12755 sq. ft.  
SIZES AND DIMENSIONS ARE APPROXIMATE, ACTUAL MAY VARY.



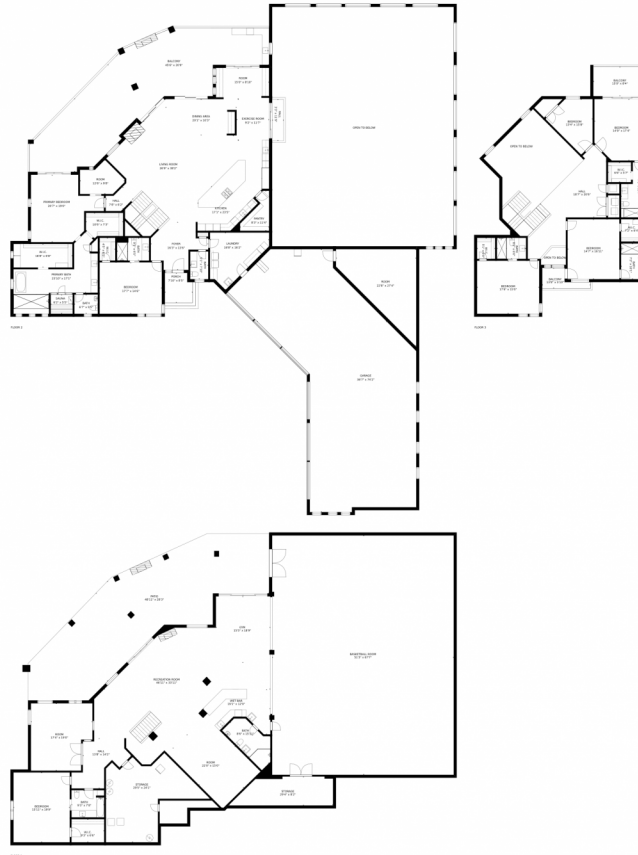
Disclaimer: Sizes and Dimensions are Approximate, Actual May Vary.



**Chris L. Anderson**  
719-761-7036  
chrisa3681@gmail.com



# 16270 Forest Light Road, Colorado Springs, CO 80908 – All Levels



GROSS INTERNAL AREA  
FLOOR 1: 7100 sq. ft, FLOOR 2: 3854 sq. ft  
FLOOR 3: 1801 sq. ft, EXCLUDED AREAS:  
PATIO: 1461 sq. ft, GARAGE: 2280 sq. ft  
BALCONY: 1355 sq. ft, PORCH: 62 sq. ft  
TOTAL: 12755 sq. ft  
SIZES AND DIMENSIONS ARE APPROXIMATE, ACTUAL MAY VARY.



Disclaimer: Sizes and Dimensions are Approximate, Actual May Vary.



**Chris L. Anderson**  
719-761-7036  
chrisa3681@gmail.com



Scan code  
for more  
property  
details

