



 Single Family  2172 SQFT  4 Beds  4 Baths  2 Car  0.11 Acre

PROPERTY DETAILS

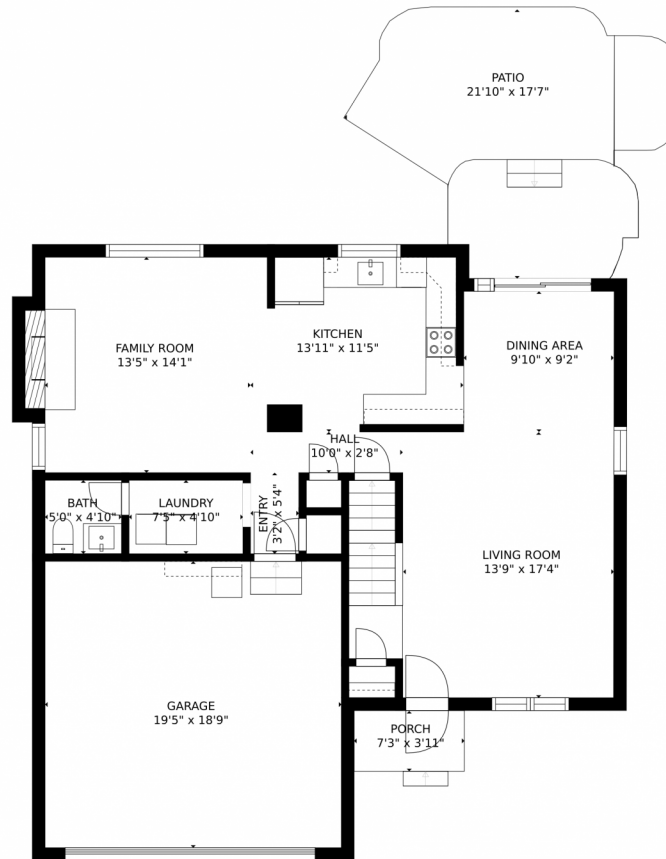
Welcome to this stunning property located in Founders Village, Castle Rock, CO. This spacious single-family home offers 4 bedrooms and 4 full bathrooms, providing ample space for a growing family. With a total of 2,172 square feet, there is plenty of room to spread out and make this house your home. The property features a beautiful living room with high ceilings, hardwood floors, and an abundance of natural light. The kitchen is equipped with stainless steel appliances, including a dishwasher, range oven, and refrigerator. The bedrooms offer a peaceful retreat, with carpeted floors and ceiling fans for added comfort. The property also includes a laundry room with a washer and dryer. Outside, you will find a lovely patio area and a spacious backyard, perfect for outdoor activities and entertaining guests. Located in the desirable community of Founders Village, this property offers a great location with easy access to schools, parks, and shopping centers. Schedule a showing today and experience the beauty and comfort this property has to offer.



Brittany Harrison
719-387-1428
brittany.harrison@evrealestate.com



4915 East Ashton Avenue, Castle Rock, CO 80104 – Main Level



GROSS INTERNAL AREA
FLOOR 1: 549 sq. ft. FLOOR 2: 870 sq. ft.
FLOOR 3: 754 sq. ft. EXCLUDED AREAS:
GARAGE: 363 sq. ft. PATIO: 275 sq. ft.
PORCH: 29 sq. ft.
TOTAL: 2173 sq. ft.
SIZES AND DIMENSIONS ARE APPROXIMATE, ACTUAL MAY VARY.



Disclaimer: Sizes and Dimensions are Approximate, Actual May Vary.



Brittany Harrison
719-387-1428
brittany.harrison@evrealstate.com



Scan code
for more
property
details



4915 East Ashton Avenue, Castle Rock, CO 80104 – 2nd Level



GROSS INTERNAL AREA
FLOOR 1: 549 sq. ft. FLOOR 2: 870 sq. ft.
FLOOR 3: 754 sq. ft. EXCLUDED AREAS:
GARAGE: 363 sq. ft. PATIO: 275 sq. ft.
PORCH: 29 sq. ft.
TOTAL: 2173 sq. ft.
SIZES AND DIMENSIONS ARE APPROXIMATE, ACTUAL MAY VARY.



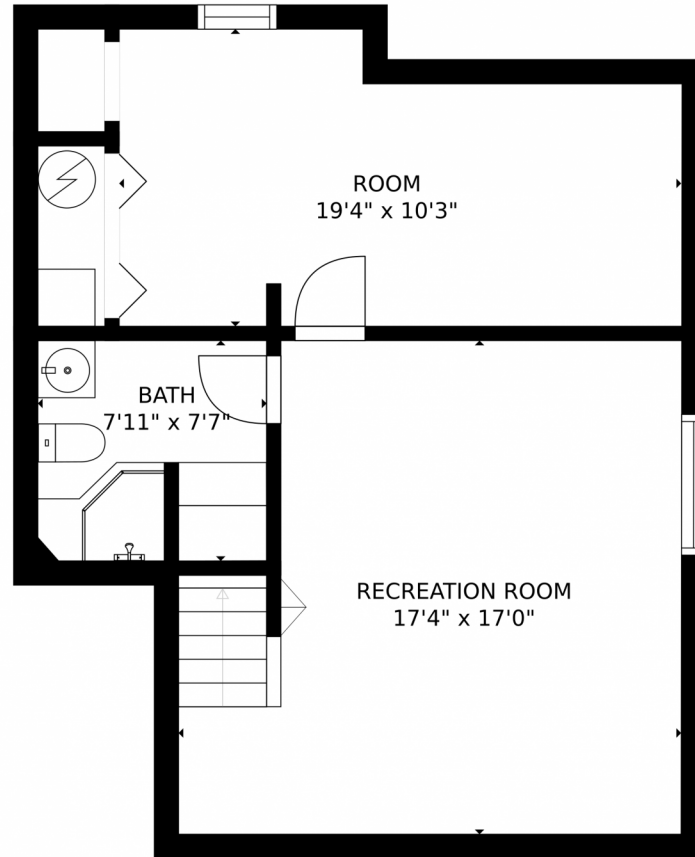
Disclaimer: Sizes and Dimensions are Approximate, Actual May Vary.



Brittany Harrison
719-387-1428
brittany.harrison@evrealstate.com



4915 East Ashton Avenue, Castle Rock, CO 80104 – Lower Level



GROSS INTERNAL AREA
FLOOR 1: 549 sq. ft. FLOOR 2: 870 sq. ft.
FLOOR 3: 754 sq. ft. EXCLUDED AREAS:
GARAGE: 363 sq. ft. PATIO: 275 sq. ft.
PORCH: 29 sq. ft.
TOTAL: 2173 sq. ft.
SIZES AND DIMENSIONS ARE APPROXIMATE, ACTUAL MAY VARY.



Disclaimer: Sizes and Dimensions are Approximate, Actual May Vary.



Brittany Harrison
719-387-1428
brittany.harrison@evrealestate.com



4915 East Ashton Avenue, Castle Rock, CO 80104 – All Levels



GROSS INTERNAL AREA
FLOOR 1: 549 sq. ft. FLOOR 2: 870 sq. ft.
FLOOR 3: 754 sq. ft. EXCLUDED AREAS:
GARAGE: 363 sq. ft. PATIO: 275 sq. ft.
PORCH: 29 sq. ft.
TOTAL: 2173 sq. ft.
SIZES AND DIMENSIONS ARE APPROXIMATE, ACTUAL MAY VARY.



Disclaimer: Sizes and Dimensions are Approximate, Actual May Vary.



Brittany Harrison
719-387-1428
brittany.harrison@evrealestate.com

