



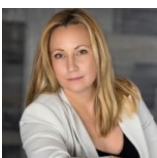
Vacant Land



9.12 Acre

PROPERTY DETAILS

Looking for million dollar views at an affordable price? This large, private parcel offers stunning views of Pike's Peak and Cathedral Spires. Multiple building sites accessible from paved roads. Minutes to Highway 285 in Conifer, easy commute to downtown Denver. Enjoy peace and quiet among evergreen and aspen trees, with wildlife in your yard. Utilities readily accessible. A2 zoning allows for livestock. Well permits granted twice. Listing agent can recommend local builders and lenders. Seller open to reasonable offers. Buyer to verify all information.

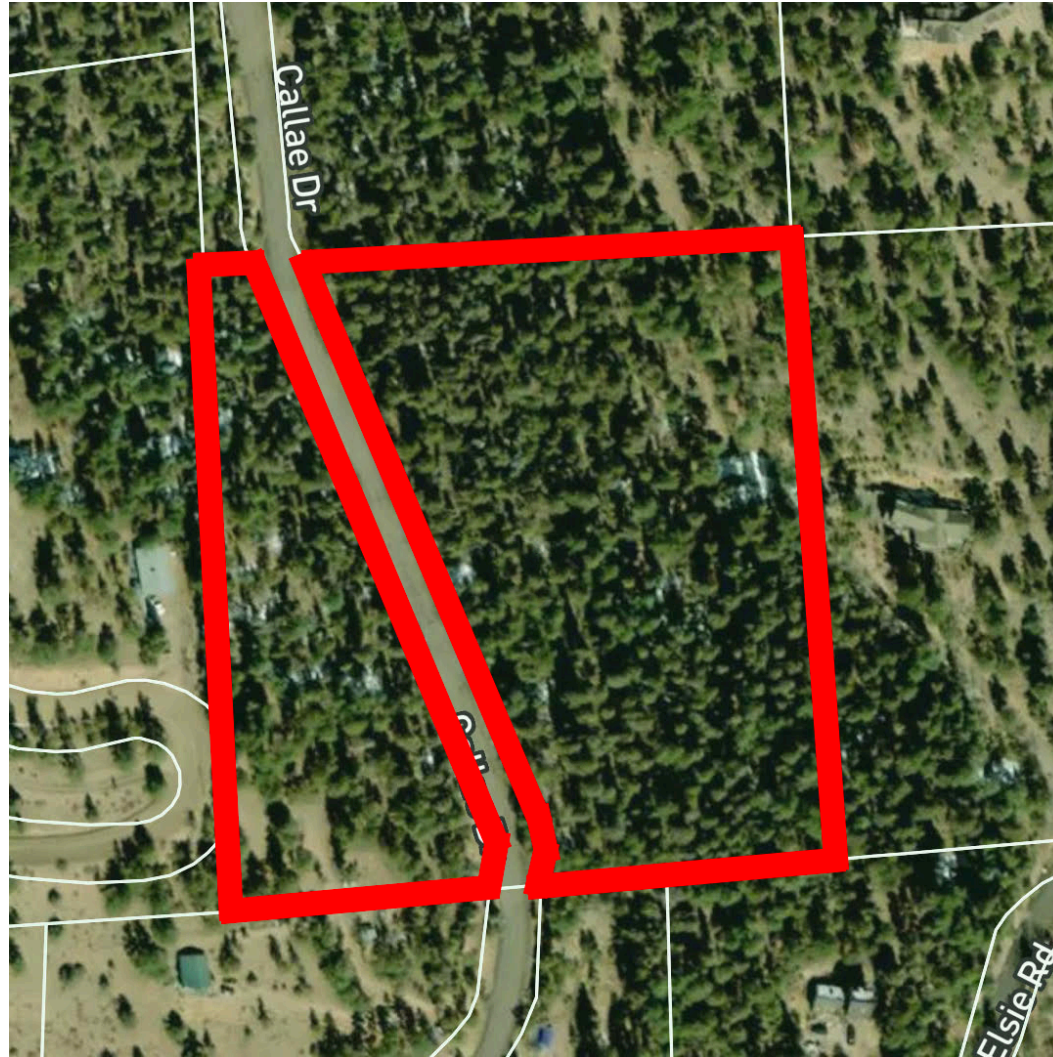


Lauren Weiss
720-485-1500
lauren@laurenweiss.com
<https://www.laurenweiss.com>



Scan code
for more
property
details





Disclaimer: Sizes and Dimensions are Approximate, Actual May Vary.



Lauren Weiss
720-485-1500
lauren@laurenweiss.com
<https://www.laurenweiss.com>

