



19702 E Dartmouth Place  
Aurora, CO 80013  
COMMUNITY: Seven Hills

MLS # 8187191  
PRICE \$500,000



Single Family



2267 SQFT



3 Beds



2 Baths



2 Car



0.13 Acre

## PROPERTY DETAILS

Welcome to this charming Seven Hills home! It offers 3 bedrooms, 2 full bathrooms, and an open concept main level. With a front deck, private back deck, and beautiful landscaping, this home is serene. Inside, you'll find an updated kitchen, fresh paint, and new carpet. The home has a new roof, furnace, water heater, and evaporative cooler. Exterior storm shutters on the upstairs bedrooms provide safety and energy efficiency. The Hot-Tub and internal components have been recently serviced and replaced. Enjoy the amenities of the Seven Hills neighborhood, including parks, a green belt, shopping, and dining, all within 10 minutes. Conveniently commute to Buckley Air-force/Space-force Base, DIA, and the Denver Tech Center.



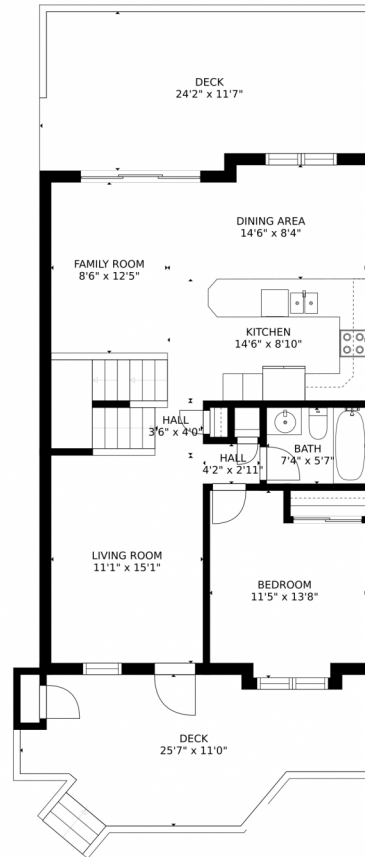
**Ben Slingsby**  
303-910-9561  
Ben@Slingsby-Homes.com



Scan code  
for more  
property  
details



# 19702 E Dartmouth Place, Aurora, CO 80013 – Main Floor



GROSS INTERNAL AREA  
FLOOR 1: 785 sq. ft. FLOOR 2: 827 sq. ft.  
FLOOR 3: 468 sq. ft. EXCLUDED AREAS:  
DECK: 482 sq. ft.  
TOTAL: 2081 sq. ft.

MEASUREMENTS CALCULATED BY V1Photos.com ARE DEEMED HIGHLY RELIABLE BUT NOT GUARANTEED.



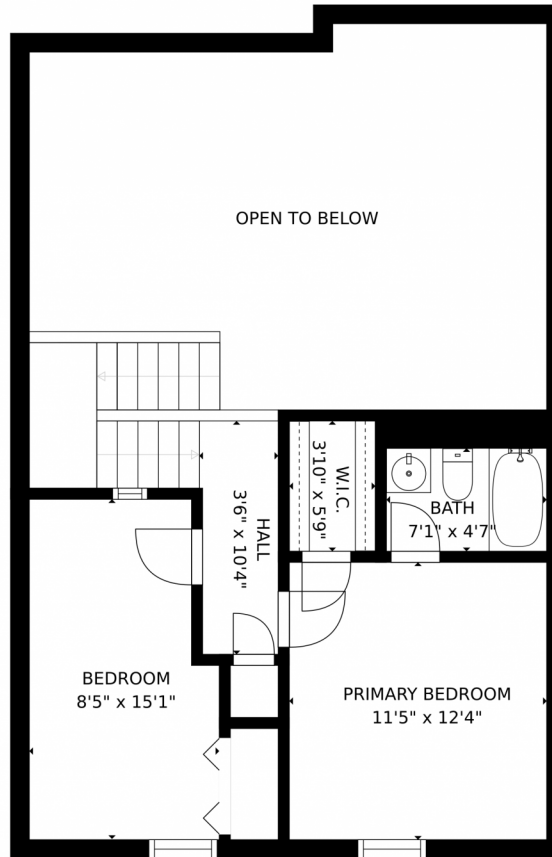
Disclaimer: Sizes and Dimensions are Approximate, Actual May Vary.



**Ben Slingsby**  
303-910-9561  
Ben@Slingsby-Homes.com



19702 E Dartmouth Place, Aurora, CO 80013 – Second Floor



GROSS INTERNAL AREA  
FLOOR 1: 785 sq. ft. FLOOR 2: 827 sq. ft.  
FLOOR 3: 468 sq. ft. EXCLUDED AREAS:  
DECK: 482 sq. ft.  
TOTAL: 2081 sq. ft.

MEASUREMENTS CALCULATED BY V1Photos.COM ARE DEEMED HIGHLY RELIABLE BUT NOT GUARANTEED.



Disclaimer: Sizes and Dimensions are Approximate, Actual May Vary.



**Ben Slingsby**  
303-910-9561  
Ben@Slingsby-Homes.com



Scan code  
for more  
property  
details



# 19702 E Dartmouth Place, Aurora, CO 80013 – All Floors



GROSS INTERNAL AREA  
FLOOR 1: 785 sq. ft. FLOOR 2: 827 sq. ft.  
FLOOR 3: 468 sq. ft. EXCLUDED AREAS:  
DECK: 482 sq. ft.  
TOTAL: 2081 sq. ft.

MEASUREMENTS CALCULATED BY V1Photos.COM ARE DEEMED HIGHLY RELIABLE BUT NOT GUARANTEED.



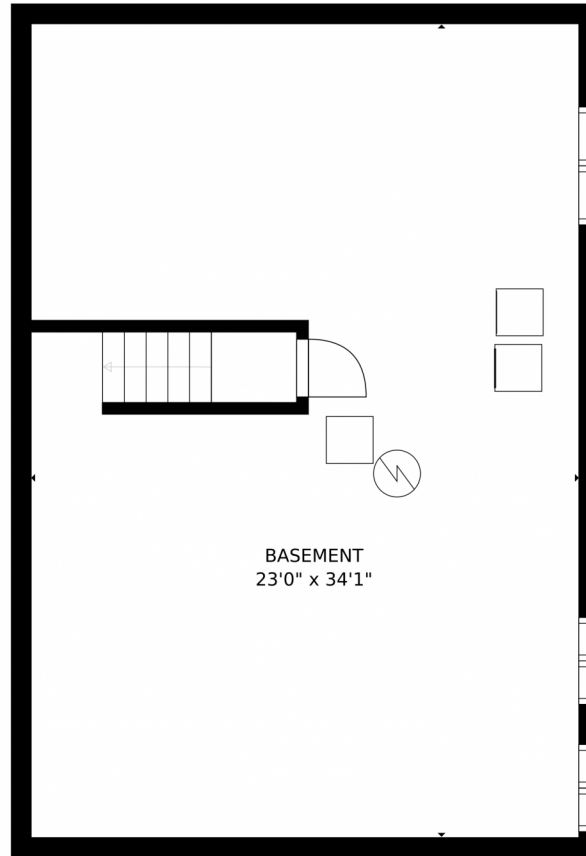
Disclaimer: Sizes and Dimensions are Approximate, Actual May Vary.



**Ben Slingsby**  
303-910-9561  
Ben@Slingsby-Homes.com



19702 E Dartmouth Place, Aurora, CO 80013 – Basement



GROSS INTERNAL AREA  
FLOOR 1: 785 sq. ft. FLOOR 2: 827 sq. ft.  
FLOOR 3: 468 sq. ft. EXCLUDED AREAS:  
DECK: 482 sq. ft.  
TOTAL: 2081 sq. ft.

MEASUREMENTS CALCULATED BY V1Photos.com ARE DEEMED HIGHLY RELIABLE BUT NOT GUARANTEED.



Disclaimer: Sizes and Dimensions are Approximate, Actual May Vary.



**Ben Slingsby**  
303-910-9561  
Ben@Slingsby-Homes.com

