




 Single Family

 1890 SQFT

 2 Beds

 1 Baths



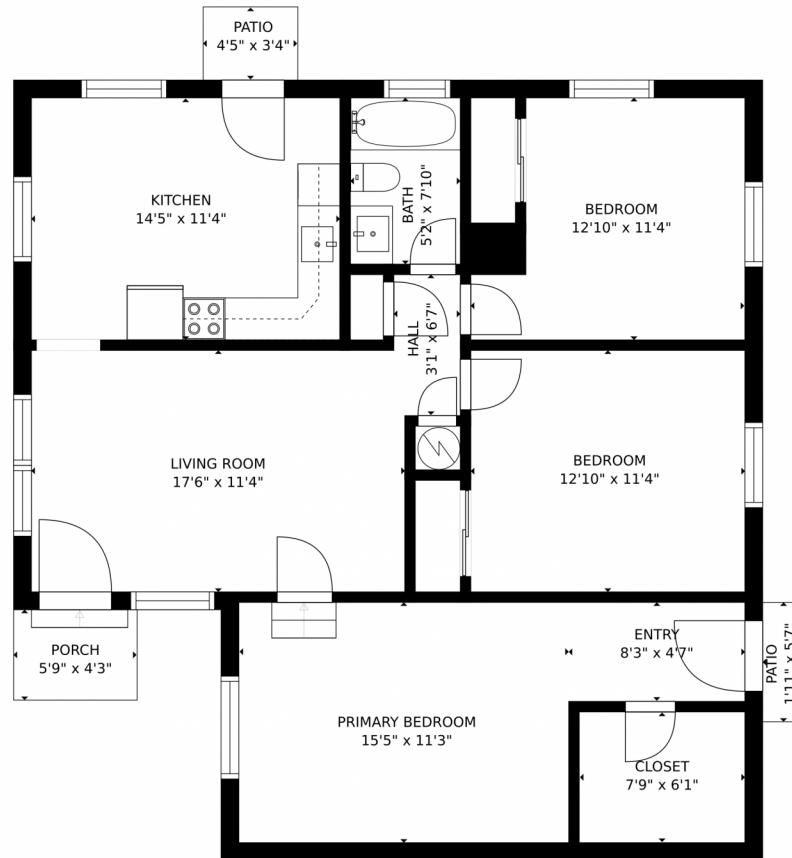
**Taylor Haas**  
303-665-7368  
taylorh@coloradorpm.com  
<https://www.coloradorpm.com/available-rental-properties-denver>



Scan code  
for more  
property  
details



# 7436 Quitman St - #7442, Westminste, CO 80030 – Floor Plan



GROSS INTERNAL AREA  
FLOOR 1: 1053 sq. ft. EXCLUDED AREAS:  
PATIO: 26 sq. ft. PORCH: 25 sq. ft.  
TOTAL: 1053 sq. ft.  
MEASUREMENTS CALCULATED BY V1Photos.COM ARE DEEMED HIGHLY RELIABLE BUT NOT GUARANTEED.



Disclaimer: Sizes and Dimensions are Approximate, Actual May Vary.



**Taylor Haas**  
303-665-7368  
taylorh@coloradorpm.com  
<https://www.coloradorpm.com/available-rental-properties-denver>



Scan code  
for more  
property  
details