




 Single Family

 1657 SQFT

 3 Beds

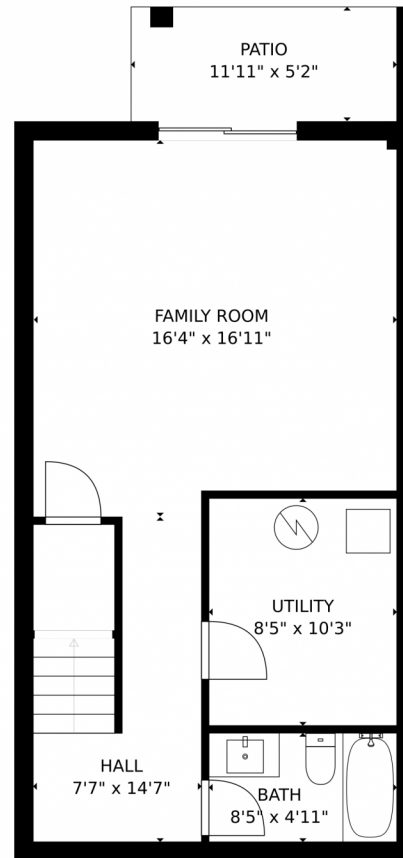
 2/1 Baths



**Taylor Haas**  
303-665-7368  
taylorh@coloradorpm.com  
<https://www.coloradorpm.com/available-rental-properties-denver>



# 3507 Indigo Ridge Point, Colorado Springs, CO 80910 – Lower Level



GROSS INTERNAL AREA  
FLOOR 1: 516 sq. ft. FLOOR 2: 516 sq. ft.  
FLOOR 3: 552 sq. ft. EXCLUDED AREAS:  
PATIO: 62 sq. ft. GARAGE: 213 sq. ft.  
BALCONY: 54 sq. ft. PORCH: 52 sq. ft.  
TOTAL: 1584 sq. ft.  
MEASUREMENTS CALCULATED BY V1Photos.COM ARE DEEMED HIGHLY RELIABLE BUT NOT GUARANTEED.



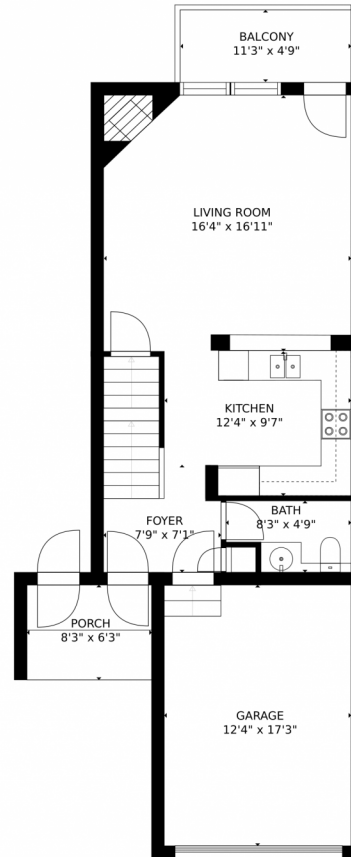
Disclaimer: Sizes and Dimensions are Approximate, Actual May Vary.



**Taylor Haas**  
303-665-7368  
taylorh@coloradorpm.com  
<https://www.coloradorpm.com/available-rental-properties-denver>



# 3507 Indigo Ridge Point, Colorado Springs, CO 80910 – Main Level



GROSS INTERNAL AREA  
FLOOR 1: 516 sq. ft. FLOOR 2: 516 sq. ft.  
FLOOR 3: 552 sq. ft. EXCLUDED AREAS:  
PATIO: 62 sq. ft. GARAGE: 213 sq. ft.  
BALCONY: 54 sq. ft. PORCH: 52 sq. ft.  
TOTAL: 1584 sq. ft.

MEASUREMENTS CALCULATED BY V1Photos.com ARE DEEMED HIGHLY RELIABLE BUT NOT GUARANTEED.



Disclaimer: Sizes and Dimensions are Approximate, Actual May Vary.



**Taylor Haas**

303-665-7368

taylorh@coloradorpm.com

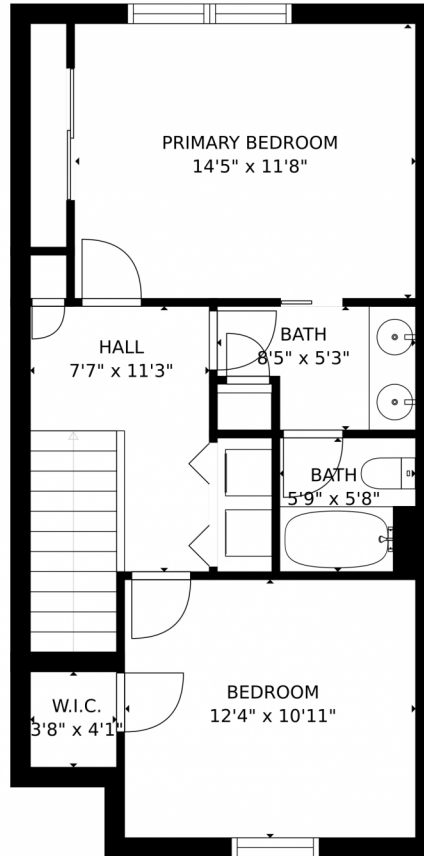
<https://www.coloradorpm.com/available-rental-properties-denver>



Scan code  
for more  
property  
details



# 3507 Indigo Ridge Point, Colorado Springs, CO 80910 – Upper Level



GROSS INTERNAL AREA  
FLOOR 1: 516 sq. ft. FLOOR 2: 516 sq. ft.  
FLOOR 3: 552 sq. ft. EXCLUDED AREAS:  
PATIO: 62 sq. ft. GARAGE: 213 sq. ft.  
BALCONY: 54 sq. ft. PORCH: 52 sq. ft.  
TOTAL: 1584 sq. ft.  
MEASUREMENTS CALCULATED BY V1Photos.COM ARE DEEMED HIGHLY RELIABLE BUT NOT GUARANTEED.



Disclaimer: Sizes and Dimensions are Approximate, Actual May Vary.



**Taylor Haas**  
303-665-7368  
taylorh@coloradorpm.com  
<https://www.coloradorpm.com/available-rental-properties-denver>



Scan code  
for more  
property  
details

# 3507 Indigo Ridge Point, Colorado Springs, CO 80910 – All Levels



GROSS INTERNAL AREA  
FLOOR 1: 516 sq. ft. FLOOR 2: 516 sq. ft.  
FLOOR 3: 552 sq. ft. EXCLUDED AREAS:  
PATIO: 62 sq. ft. GARAGE: 213 sq. ft.  
BALCONY: 54 sq. ft. PORCH: 52 sq. ft.  
TOTAL: 1584 sq. ft.

MEASUREMENTS CALCULATED BY V1Photos.COM ARE DEEMED HIGHLY RELIABLE BUT NOT GUARANTEED.



Disclaimer: Sizes and Dimensions are Approximate, Actual May Vary.



**Taylor Haas**  
303-665-7368  
taylorh@coloradorpm.com  
<https://www.coloradorpm.com/available-rental-properties-denver>

