



12584 S Beaver Creek Way  
 Parker, CO 80134  
 COMMUNITY: Stroh Ranch

MLS # 2862833  
 PRICE \$500,000



Single Family



1816 SQFT



3 Beds



2 Baths



2 Car



0.12 Acre

## PROPERTY DETAILS

Welcome home to Stroh Ranch of Parker! Many honey do's have already been honey done making this Parker beauty move in ready to the max including brand new interior paint throughout, new tile in the upper level bathroom, and even new window screens! Immediately upon entering you are greeted by an open concept main level gently transitioning you from the living room into the eat-in dining space and kitchen making this layout ideal for your entertainer's heart. The main level is complete with a third bedroom option which would be lovely for a guest or a teen suite as a full bathroom is found adjacent, also great for a home office space. Upstairs you will find a spacious owner's bedroom, large enough for many furniture design options, along with a secondary generously sized bedroom and additional full bathroom. You will love living in Stroh Ranch with miles and miles of trails leading you throughout your new community along with tons of open spaces and the Stroh Ranch soccer fields. Mere minutes to the South of your new home are all the amenities you need from King Soopers for your grocery shopping to Walgreen's and the Parker Pour House for a nice evening out. Just to the North you will find the Salisbury Equestrian Park offering trails and a playground along with a seasonal pond area and a multitude of baseball/softball diamonds. Minutes to Old Town Parker and Mainstreet where you can opt outside at O'Brien Park offering a robust swimming



**Tatyana Sturm**

720-350-5909

tatyana@exitrealtydtc.com

<https://thestorckteam.com>



Scan code  
 for more  
 property  
 details



pool with water park style slides or for a game of basketball at their open courts. Enjoy the Parker Farmer's Market every Sunday boasting many local vendors from fresh bison, farm to table produce, food trucks, and much more. Whether you are after fun on a Saturday evening at the Tailgate with live music or taking in brunch while you catch up with friends at a casual eatery, Old Town Parker has limitless fun. You will love living in Stroh Ranch of Parker, Colorado!



**Tatyana Sturm**

720-350-5909

tatyana@exitrealtydtc.com

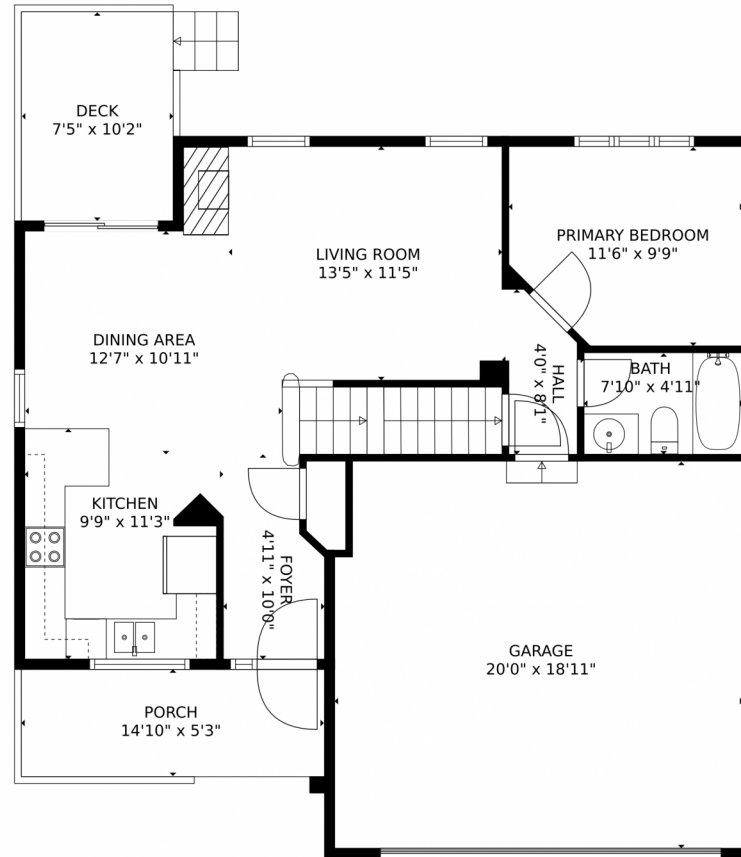
<https://thestorckteam.com>



Scan code  
for more  
property  
details



# 12584 S Beaver Creek Way, Parker, CO 80134 – Main Level



GROSS INTERNAL AREA  
FLOOR 1: 3 sq. ft., FLOOR 2: 649 sq. ft.  
FLOOR 3: 402 sq. ft., EXCLUDED AREAS:  
UNFINISHED BASEMENT: 619 sq. ft., GARAGE: 375 sq. ft.  
DECK: 76 sq. ft., PORCH: 78 sq. ft.  
TOTAL: 1054 sq. ft.  
MEASUREMENTS CALCULATED BY V1Photos.com ARE DEEMED HIGHLY RELIABLE BUT NOT GUARANTEED.



Disclaimer: Sizes and Dimensions are Approximate, Actual May Vary.



**Tatyana Sturm**  
720-350-5909  
tatyana@exitrealttydc.com  
<https://thestorckteam.com>

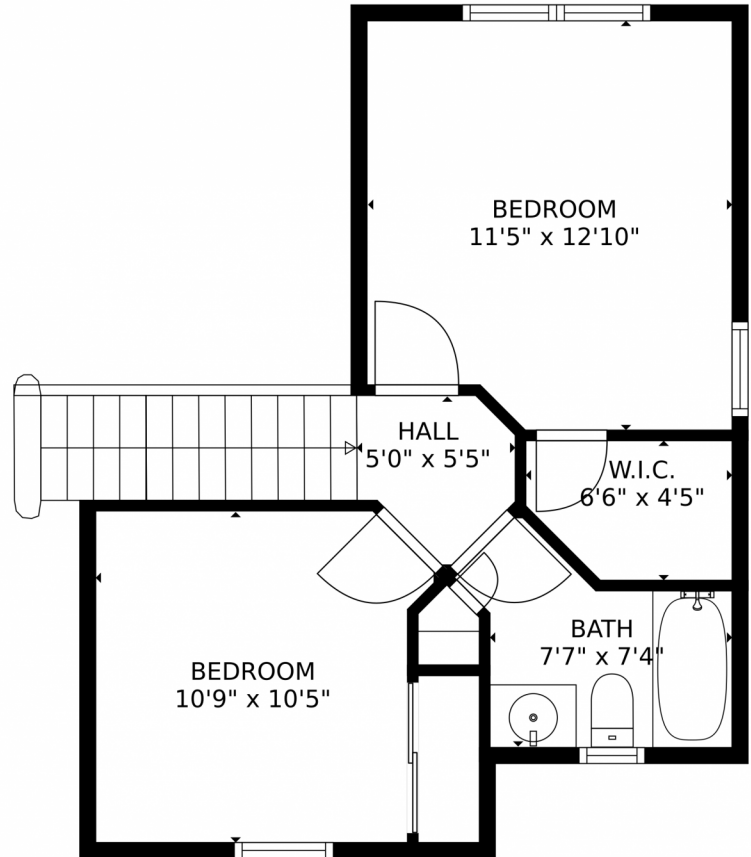


Scan code  
for more  
property  
details





12584 S Beaver Creek Way, Parker, CO 80134 — Second Level



GROSS INTERNAL AREA  
FLOOR 1: 3 sq. ft., FLOOR 2: 649 sq. ft.  
FLOOR 3: 402 sq. ft., EXCLUDED AREAS:  
UNFINISHED BASEMENT: 619 sq. ft., GARAGE: 375 sq. ft.  
DECK: 76 sq. ft., PORCH: 78 sq. ft.  
TOTAL: 1054 sq. ft.  
MEASUREMENTS CALCULATED BY V1Photos.com ARE DEEMED HIGHLY RELIABLE BUT NOT GUARANTEED.



Disclaimer: Sizes and Dimensions are Approximate, Actual May Vary.

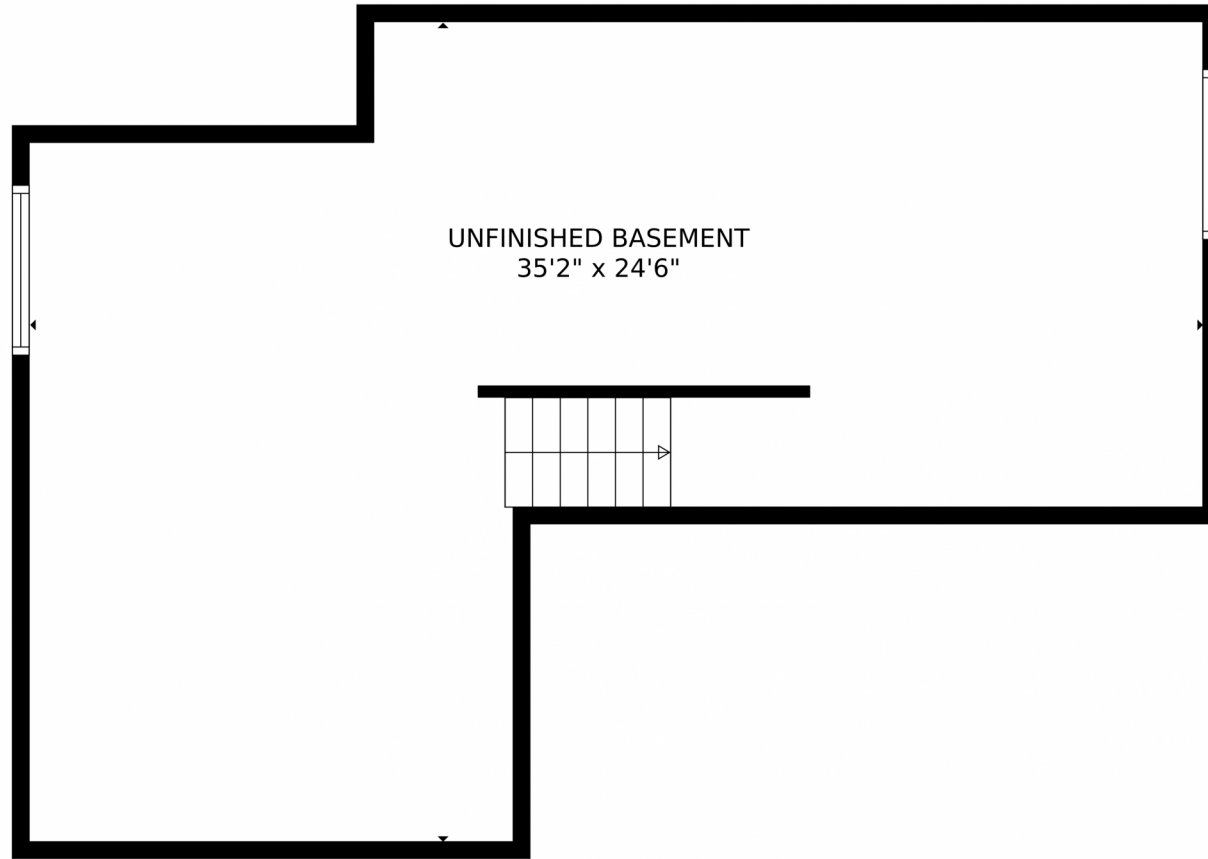


**Tatyana Sturm**  
720-350-5909  
tatyana@exitrealttydtc.com  
<https://thestorckteam.com>



Scan code for more property details





GROSS INTERNAL AREA  
FLOOR 1: 3 sq. ft., FLOOR 2: 649 sq. ft.  
FLOOR 3: 402 sq. ft., EXCLUDED AREAS:  
UNFINISHED BASEMENT: 619 sq. ft., GARAGE: 375 sq. ft.  
DECK: 76 sq. ft., PORCH: 78 sq. ft.  
TOTAL: 1054 sq. ft.  
MEASUREMENTS CALCULATED BY V1Photos.COM ARE DEEMED HIGHLY RELIABLE BUT NOT GUARANTEED.



Disclaimer: Sizes and Dimensions are Approximate, Actual May Vary.



**Tatyana Sturm**  
720-350-5909  
tatyana@exitrealtydtc.com  
<https://thestorckteam.com>



# 12584 S Beaver Creek Way, Parker, CO 80134 — All Levels



GROSS INTERNAL AREA  
FLOOR 1: 3 sq. ft., FLOOR 2: 649 sq. ft.  
FLOOR 3: 402 sq. ft., EXCLUDED AREAS:  
UNFINISHED BASEMENT: 619 sq. ft., GARAGE: 375 sq. ft.  
DECK: 76 sq. ft., PORCH: 78 sq. ft.  
TOTAL: 1054 sq. ft.  
MEASUREMENTS CALCULATED BY V1Photos.com ARE DEEMED HIGHLY RELIABLE BUT NOT GUARANTEED.



Disclaimer: Sizes and Dimensions are Approximate, Actual May Vary.



**Tatyana Sturm**  
720-350-5909  
tatyana@exitrealttydc.com  
<https://thestorckteam.com>

