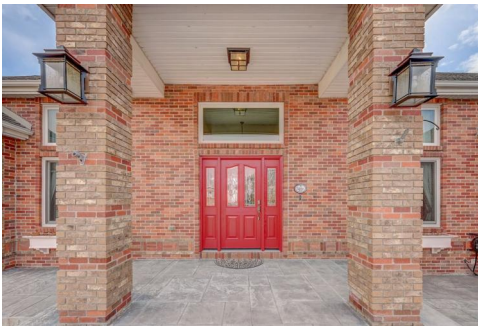




1480 Kokai Circle  
Denver, CO 80221  
**COMMUNITY:** Kokai

**MLS #** 4610174  
**PRICE** \$1,150,000



Single Family



5630 SQFT



5 Beds



3/2 Baths



3 Car



0.41 Acre

## PROPERTY DETAILS

Absolutely beautiful! Centrally located and backs to open space with views of the city, park and water that are easily seen from the amazing deck. There is NO HOA. Newer features of this home; Deck 2021, HVAC 2018, 75 gallon water heater 2022, Solar in 2022, newer ejector pump and pressure regulator, newer attic insulation and most windows and sliding doors replaced with Anderson. This home has enough space to work, exercise, entertain and relax with four bedrooms and five bathrooms and a three car garage on a cul-de-sac. With it's grand entrance and foyer you walk into a large open floor plan with hardwood floors taking you to the family room and the large kitchen with an island and a dedicated eating space with a wet bar. There is also a formal dinning room and den along with the Jack and Jill bedrooms on one side of the home and the primary bedroom and primary bathroom on the other side. The primary bedroom has a vaulted ceiling, five piece bathroom and walk in closet. From both the family room and the kitchen you can step out to the deck with stairs taking you down to the patio. From the patio you can enter the walk out basement from two locations. Large open space great for an exercise room, there is a large move room, two bedrooms one of which is non conforming, a full bathroom and half bathroom and plenty of storage space. If you love to garden this is the place for you, with the so many designated flowering areas with drip lines and fruit trees and a large



**Holly Worley**  
303-257-8091  
findahomewithholly@gmail.com



Scan code  
for more  
property  
details



shed. Seller is leaving so many beautiful flowering pots. This home is centrally located with easy access to 270, I36 and I25. This is a home you must see to appreciate, schedule your showing with you agent today, or give Holly Worley a call for a private showing at 303-257-8091.



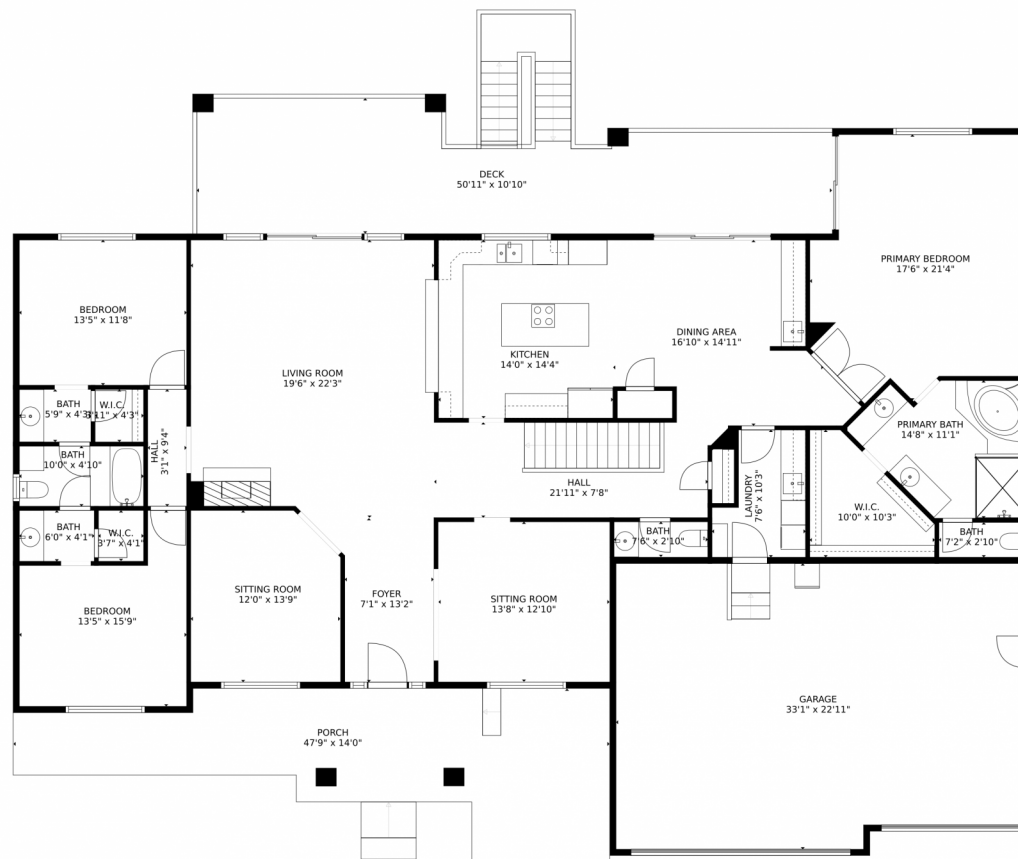
**Holly Worley**  
303-257-8091  
[findahomewithholly@gmail.com](mailto:findahomewithholly@gmail.com)



Scan code  
for more  
property  
details



# 1480 Kokai Circle, Denver, CO 80221 — Main Level



GROSS INTERNAL AREA  
FLOOR 1: 2854 sq. ft. FLOOR 2: 2688 sq. ft.  
EXCLUDED AREAS: , PATIO: 1538 sq. ft.  
GARAGE: 732 sq. ft. DECK: 528 sq. ft.  
PORCH: 414 sq. ft.  
TOTAL: 5542 sq. ft.

MEASUREMENTS CALCULATED BY V1Photos.com ARE DEEMED HIGHLY RELIABLE BUT NOT GUARANTEED.

Disclaimer: Sizes and Dimensions are Approximate, Actual May Vary.



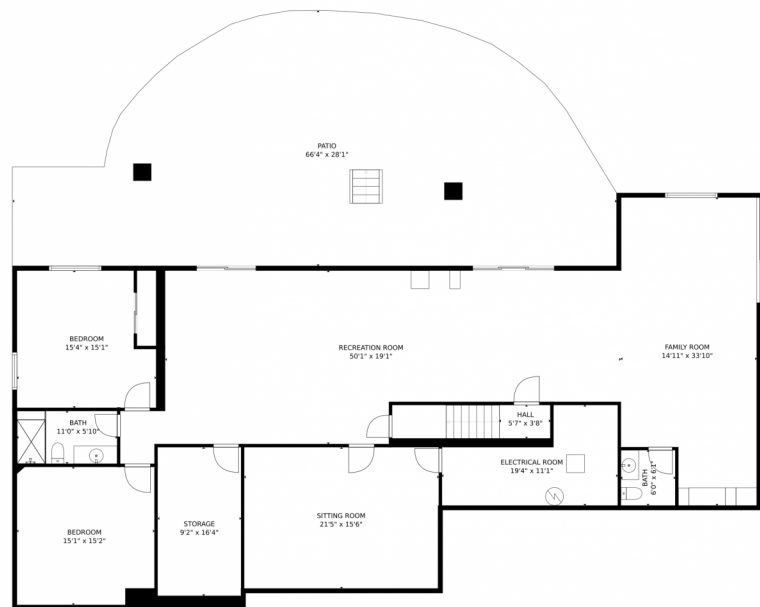
**Holly Worley**  
303-257-8091  
findahomewithholly@gmail.com



Scan code  
for more  
property  
details



# 1480 Kokai Circle, Denver, CO 80221 — Basement



GROSS INTERNAL AREA  
FLOOR 1: 2854 sq. ft, FLOOR 2: 2688 sq. ft  
EXCLUDED AREAS: , PATIO: 1538 sq. ft  
GARAGE: 732 sq. ft, DECK: 528 sq. ft  
PORCH: 414 sq. ft  
TOTAL: 5542 sq. ft

MEASUREMENTS CALCULATED BY V1Photos.COM ARE DEEMED HIGHLY RELIABLE BUT NOT GUARANTEED.



Disclaimer: Sizes and Dimensions are Approximate, Actual May Vary.



**Holly Worley**  
303-257-8091  
[findahomewithholly@gmail.com](mailto:findahomewithholly@gmail.com)

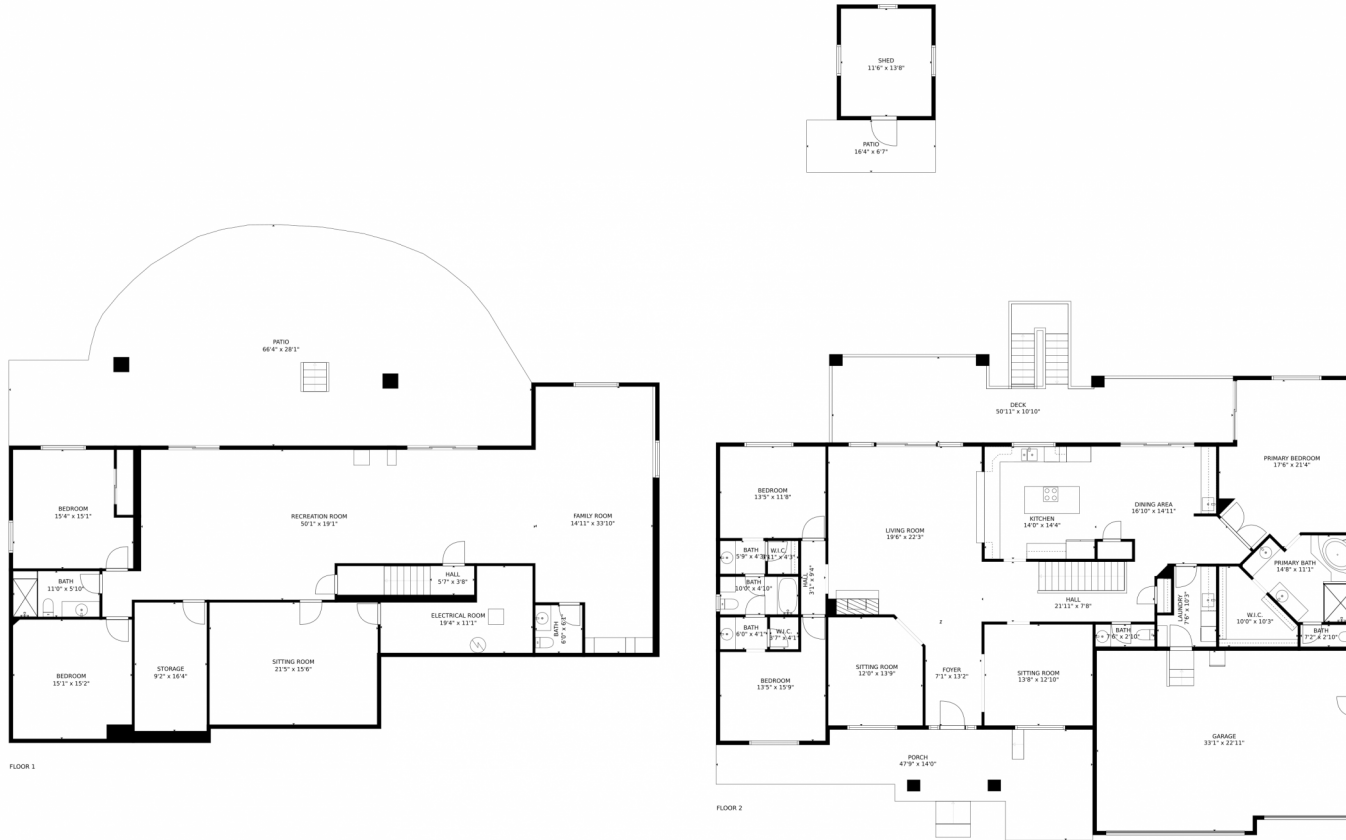


Scan code  
for more  
property  
details





1480 Kokai Circle, Denver, CO 80221 — All Levels



GROSS INTERNAL AREA  
FLOOR 1: 2854 sq. ft, FLOOR 2: 2688 sq. ft  
EXCLUDED AREAS: , PATIO: 1538 sq. ft  
GARAGE: 732 sq. ft, DECK: 528 sq. ft  
PORCH: 414 sq. ft  
TOTAL: 5542 sq. ft

MEASUREMENTS CALCULATED BY V1Photos.com ARE DEEMED HIGHLY RELIABLE BUT NOT GUARANTEED.



Disclaimer: Sizes and Dimensions are Approximate, Actual May Vary.



Holly Worley  
303-257-8091  
findahomewithholly@gmail.com



Scan code  
for more  
property  
details

