

Single Family



4141 SQFT



6 Beds



6/1 Baths



4 Car



0.1 Acre

PROPERTY DETAILS

Welcome to your brand new stunning modern oasis near Sloans Lake! This spacious home spans over 4,100 square feet and boasts 6 bedrooms, 7 bathrooms, and a bonus room in the basement, providing ample space for both relaxation and entertaining.

The main house (4bed/5bath) features a chef's dream kitchen, complete with Thermador appliances and solid hardwood floors throughout. The main floor boasts 12-foot ceilings, creating an open and airy feel, while the second floor has 10-foot ceilings, which sets this home apart.

Custom steel fabrication can be found throughout the house, showcasing the attention to detail and design that went into creating this magnificent home. You'll be greeted by a grand 10-foot tall front door upon arrival. The large glass garage door at the back of the house seamlessly blends indoor and outdoor living.



Christine Kresge

303-667-7204

ckresge@ave-realty-mtg.com



Scan code
for more
property
details



The primary suite is a true retreat, featuring double closets and a grand bathroom. The rooftop deck offers stunning views and a perfect spot to entertain guests or relax in the Colorado sun.

Additionally, this property includes an ADU above the 4-car garage, with 2 bedrooms and 2 bathrooms, providing ample space for guests or rental income.

Located at 1715 Irving St., Denver, CO 80204, this home is conveniently situated near shops, restaurants, and entertainment, and is within walking distance to the beautiful Sloans Lake. Don't miss the opportunity to make this your dream home!



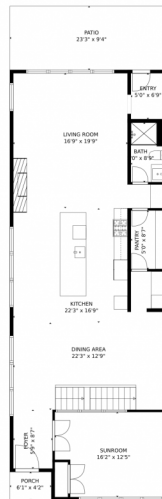
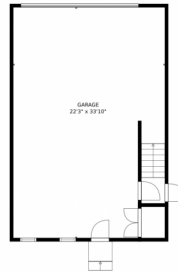
Christine Kresge
303-667-7204
ckresge@ave-realty-mtg.com



Scan code
for more
property
details



1715 Irving Street, Denver, CO 80204 – Main Level



GROSS INTERNAL AREA
FLOOR 1: 433 sq. ft, FLOOR 2: 1370 sq. ft
FLOOR 3: 2072 sq. ft, FLOOR 4: 0 sq. ft
EXCLUDED AREAS: , GARAGE: 725 sq. ft
PATIO: 217 sq. ft, PORCH: 25 sq. ft
TERRACE: 1326 sq. ft
TOTAL: 3874 sq. ft

MEASUREMENTS CALCULATED BY V1Photos.com ARE DEEMED HIGHLY RELIABLE BUT NOT GUARANTEED.



Disclaimer: Sizes and Dimensions are Approximate, Actual May Vary.



Christine Kresge
303-667-7204
ckresge@ave-realty-mtg.com



1715 Irving Street, Denver, CO 80204 – Upper Level



GROSS INTERNAL AREA
FLOOR 1: 433 sq. ft, FLOOR 2: 1370 sq. ft
FLOOR 3: 2072 sq. ft, FLOOR 4: 0 sq. ft
EXCLUDED AREAS: , GARAGE: 725 sq. ft
PATIO: 217 sq. ft, PORCH: 25 sq. ft
TERRACE: 1326 sq. ft
TOTAL: 3874 sq. ft

MEASUREMENTS CALCULATED BY V1Photos.COM ARE DEEMED HIGHLY RELIABLE BUT NOT GUARANTEED.

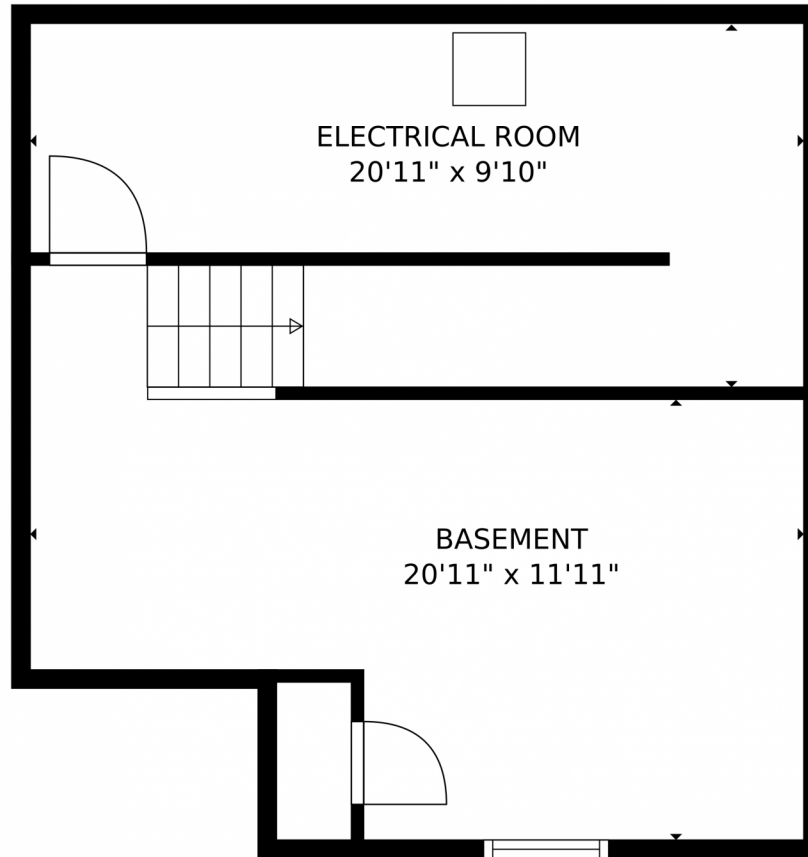


Disclaimer: Sizes and Dimensions are Approximate, Actual May Vary.



Christine Kresge
303-667-7204
ckresge@ave-realty-mtg.com





GROSS INTERNAL AREA
FLOOR 1: 433 sq. ft., FLOOR 2: 1370 sq. ft.
FLOOR 3: 2072 sq. ft., FLOOR 4: 0 sq. ft.
EXCLUDED AREAS: , GARAGE: 725 sq. ft.
PATIO: 217 sq. ft., PORCH: 25 sq. ft.
TERRACE: 1326 sq. ft.
TOTAL: 3874 sq. ft.

MEASUREMENTS CALCULATED BY V1Photos.COM ARE DEEMED HIGHLY RELIABLE BUT NOT GUARANTEED.



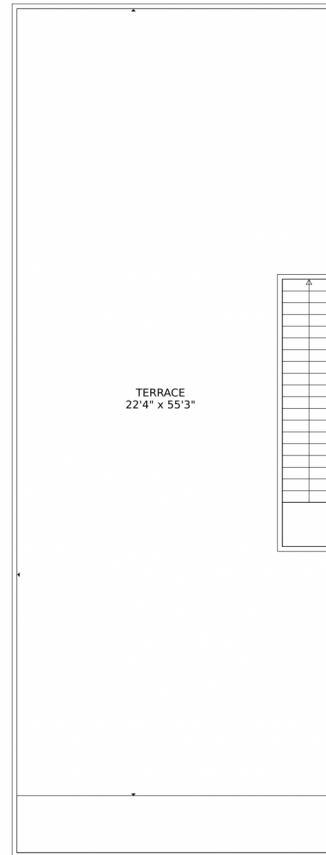
Disclaimer: Sizes and Dimensions are Approximate, Actual May Vary.



Christine Kresge
303-667-7204
ckresge@ave-realty-mtg.com



1715 Irving Street, Denver, CO 80204 – Rooftop Deck



GROSS INTERNAL AREA
FLOOR 1: 433 sq. ft., FLOOR 2: 1370 sq. ft.
FLOOR 3: 2072 sq. ft., FLOOR 4: 0 sq. ft.
EXCLUDED AREAS: , GARAGE: 725 sq. ft.
PATIO: 217 sq. ft., PORCH: 25 sq. ft.
TERRACE: 1326 sq. ft.
TOTAL: 3874 sq. ft.

MEASUREMENTS CALCULATED BY V1Photos.COM ARE DEEMED HIGHLY RELIABLE BUT NOT GUARANTEED.



Disclaimer: Sizes and Dimensions are Approximate, Actual May Vary.



Christine Kresge
303-667-7204
ckresge@ave-realty-mtg.com



Scan code
for more
property
details



1715 Irving Street, Denver, CO 80204 – All Levels



GROSS INTERNAL AREA
FLOOR 1: 433 sq. ft, FLOOR 2: 1370 sq. ft
FLOOR 3: 2072 sq. ft, FLOOR 4: 0 sq. ft
EXCLUDED AREAS: , GARAGE: 725 sq. ft
PATIO: 217 sq. ft, PORCH: 25 sq. ft
TERRACE: 1326 sq. ft
TOTAL: 3874 sq. ft

MEASUREMENTS CALCULATED BY V1Photos.com ARE DEEMED HIGHLY RELIABLE BUT NOT GUARANTEED.



Disclaimer: Sizes and Dimensions are Approximate, Actual May Vary.



Christine Kresge
303-667-7204
ckresge@ave-realty-mtg.com

