



12952 S Wamblee Valley Road  
Conifer, CO 80433

COMMUNITY: Richmond Hill Corridor

MLS # 2906281  
PRICE \$875,000



Single Family



2645 SQFT



3 Beds



2/1 Baths



3 Car



2.99 Acre

## PROPERTY DETAILS

Beautiful walk out ranch with amazing views and wooded, paved roads. Must-see home with oak floors, large windows, and wood burning fireplace. Kitchen with gas stove and oven, laundry room on main level. Remodeled upstairs bathroom with soaking tub and oversized shower. Basement with third bedroom, 3/4 bathroom, and wood burning fireplace. Oversized two-car garage and shed on concrete pad. Walking trails and gazebo on property. Secluded yet convenient location. Easy access to amenities and 285.



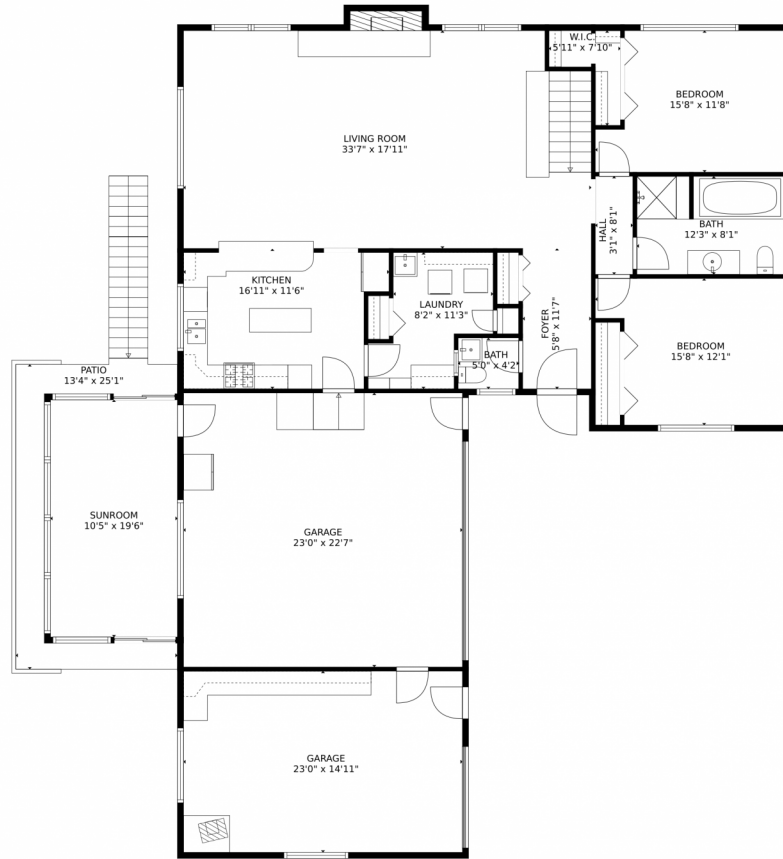
**Holly Worley**  
303-257-8091  
findahomewithholly@gmail.com



Scan code  
for more  
property  
details



# 12952 S Wamblee Valley Road, Conifer, CO 80433 – Main Level



GROSS INTERNAL AREA  
FLOOR 1: 945 sq. ft., FLOOR 2: 1724 sq. ft.  
FLOOR 3: 218 sq. ft., EXCLUDED AREAS:  
REDUCED HEADROOM BELOW 1.5M: 153 sq. ft., UNFINISHED BASEMENT: 411 sq. ft.  
PATIO: 181 sq. ft., GARAGE: 861 sq. ft.  
TOTAL: 2887 sq. ft.  
MEASUREMENTS CALCULATED BY V1Photos.com ARE DEEMED HIGHLY RELIABLE BUT NOT GUARANTEED.



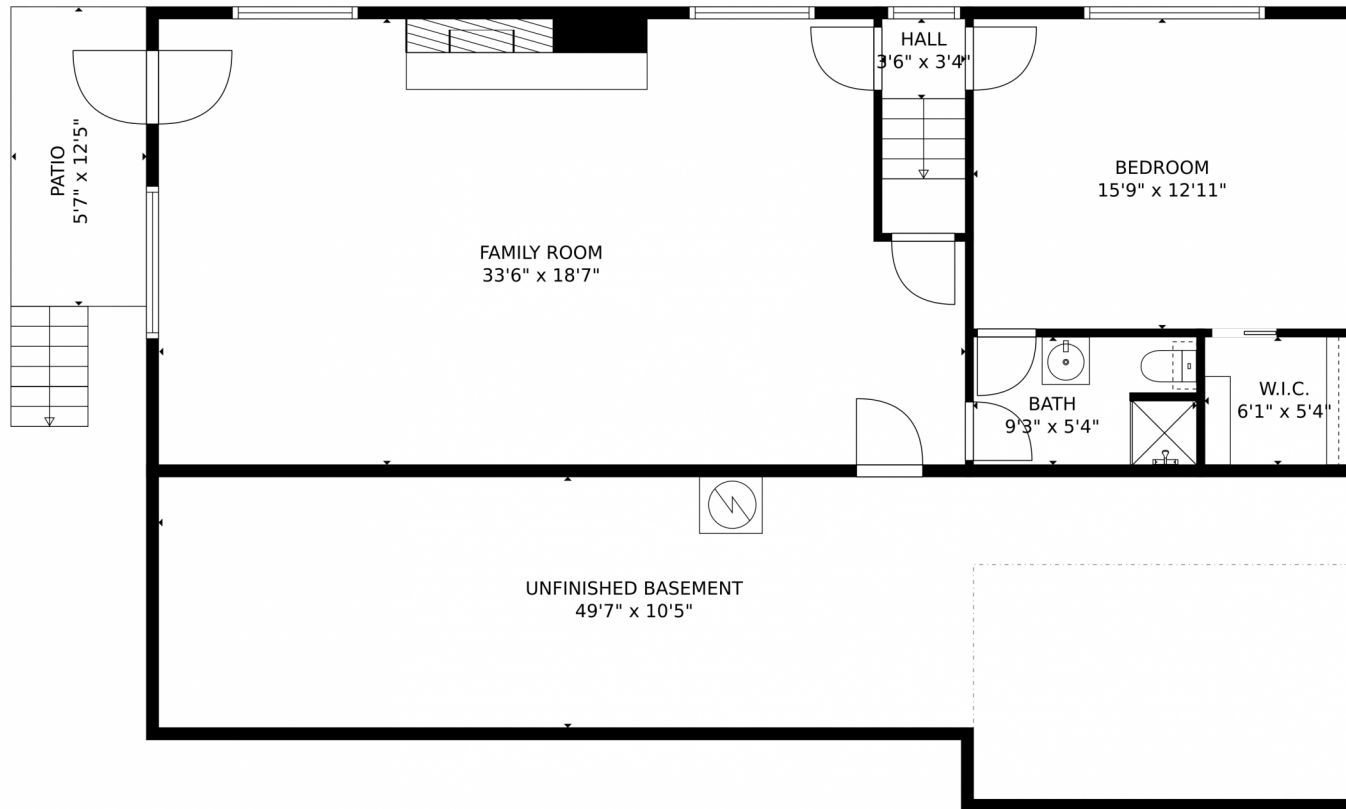
Disclaimer: Sizes and Dimensions are Approximate, Actual May Vary.



**Holly Worley**  
303-257-8091  
findahomewithholly@gmail.com



12952 S Wamblee Valley Road, Conifer, CO 80433 – Basement



GROSS INTERNAL AREA  
FLOOR 1: 945 sq. ft., FLOOR 2: 1724 sq. ft.  
FLOOR 3: 218 sq. ft., EXCLUDED AREAS:  
REDUCED HEADROOM BELOW 1.5M: 153 sq. ft., UNFINISHED BASEMENT: 411 sq. ft.  
PATIO: 181 sq. ft., GARAGE: 861 sq. ft.  
TOTAL: 2887 sq. ft.  
MEASUREMENTS CALCULATED BY V1Photos.COM ARE DEEMED HIGHLY RELIABLE BUT NOT GUARANTEED.



Disclaimer: Sizes and Dimensions are Approximate, Actual May Vary.

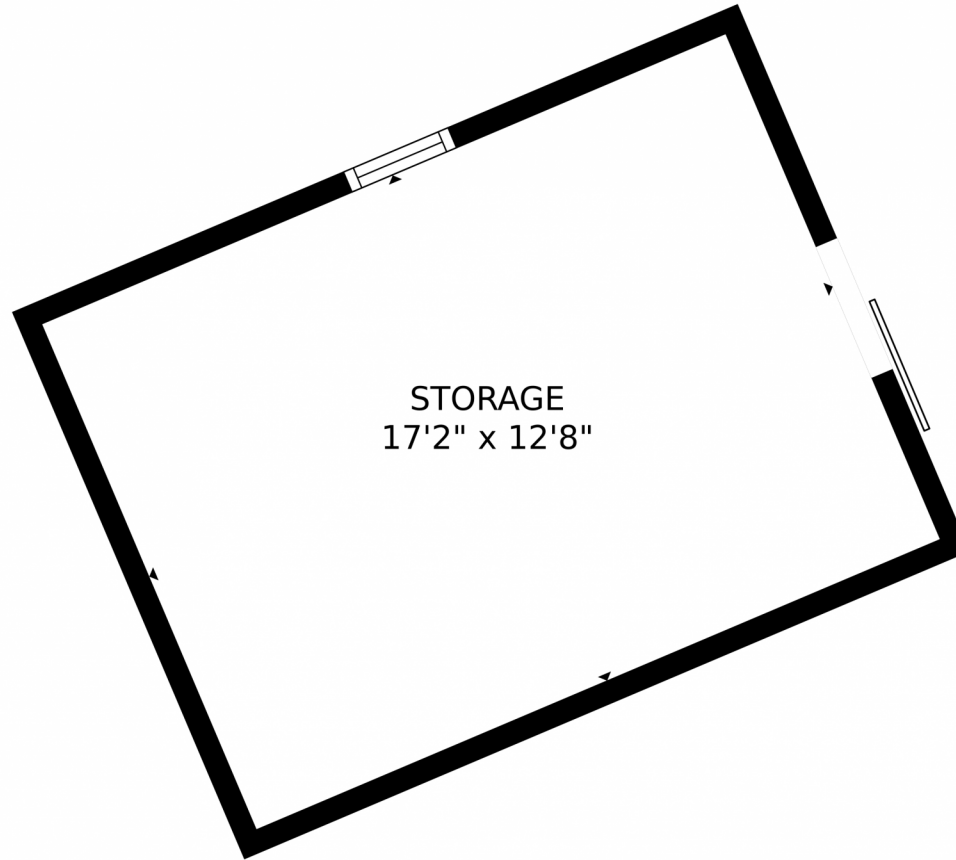


**Holly Worley**  
303-257-8091  
findahomewithholly@gmail.com



Scan code  
for more  
property  
details





GROSS INTERNAL AREA  
FLOOR 1: 945 sq. ft., FLOOR 2: 1724 sq. ft.  
FLOOR 3: 218 sq. ft., EXCLUDED AREAS:  
REDUCED HEADROOM BELOW 1.5M: 153 sq. ft., UNFINISHED BASEMENT: 411 sq. ft.  
PATIO: 181 sq. ft., GARAGE: 861 sq. ft.  
TOTAL: 2887 sq. ft.  
MEASUREMENTS CALCULATED BY V1Photos.com ARE DEEMED HIGHLY RELIABLE BUT NOT GUARANTEED.



Disclaimer: Sizes and Dimensions are Approximate, Actual May Vary.

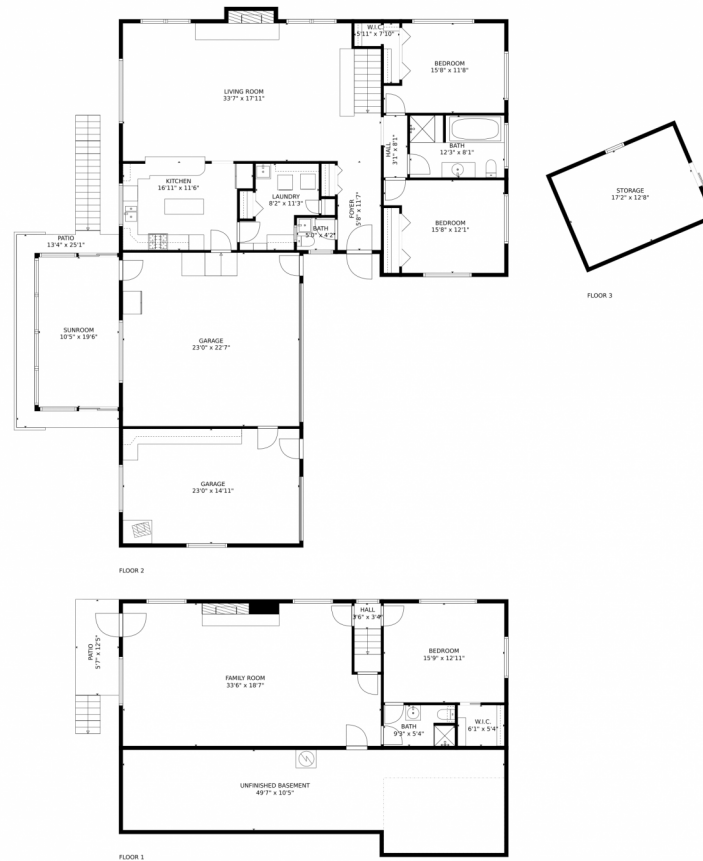


**Holly Worley**  
303-257-8091  
findahomewithholly@gmail.com



Scan code  
for more  
property  
details

# 12952 S Wamblee Valley Road, Conifer, CO 80433 – All Levels



GROSS INTERNAL AREA  
 FLOOR 1: 945 sq. ft., FLOOR 2: 1724 sq. ft.  
 FLOOR 3: 218 sq. ft., EXCLUDED AREAS:  
 REDUCED HEADROOM BELOW 1.5M: 153 sq. ft., UNFINISHED BASEMENT: 411 sq. ft.  
 PATIO: 181 sq. ft., GARAGE: 861 sq. ft.  
 TOTAL: 2887 sq. ft.  
 MEASUREMENTS CALCULATED BY V1Photos.com ARE DEEMED HIGHLY RELIABLE BUT NOT GUARANTEED.



Disclaimer: Sizes and Dimensions are Approximate, Actual May Vary.



**Holly Worley**  
 303-257-8091  
 findahomewithholly@gmail.com

