



Single Family



4898 SQFT



5 Beds



3/1 Baths



3 Car



5.15 Acre

PROPERTY DETAILS

Welcome to this stunning classic mountain-style home situated on a pastoral 5-acre lot in the coveted Upper Bear Creek area. Boasting picturesque mountain views, privacy & quiet, this wonderful home offers a perfect retreat. Upon entering the home, you will be struck by the soaring vaulted ceilings and the warm ambiance provided by the pine beams, cabinetry, and tongue & groove ceilings. The large windows throughout the home allow for plenty of natural light & provide snow-capped mountain views. The impressive stone fireplace adds to the cozy lodge feel of the home. With its open flow and design, the large kitchen welcomes everyone to gather with plentiful granite counters, high end appliances, breakfast bar and adjoining dining space. The main level primary suite is expansive, with vaulted ceilings and access to the deck. The 5th bedroom off of the kitchen makes a perfect main level office, or could be a formal dining room. The outdoor options include the expansive deck with all new decking and rails. This is perfect for outdoor living with views of your acreage, aspens and mountains. Other options are the large charming front porch - enjoy your morning coffee & watch the sun rise from here! Fun times will be had downstairs in the huge recreation room with a wet bar & fireplace, and there is also exterior access to the patio - a great spot for a hot tub! There is also room for the media area. Two additional bedrooms, work-out room, storage & bath complete the lower level. The



Pandora & Joh Erlandson

303-888-6298

pandora@pandorajohnproperties.com

<https://www.pandorajohnproperties.com>

Scan code
for more
property
details



home features new flooring & radiant in-floor heat creating a comfortable interior all year-round. High-speed internet, natural gas, water purifier, and solar panels make this home both functional and convenient. The 3-car garage has Tesla electric car chargers, and there is plenty of additional storage throughout the house. There is ample horse potential on the property including a fenced corral, and the aspens and meadow create a tranquil setting. This home is perfect for those who seek the mountain lifestyle just minutes to Evergreen Lake, trails and amenities. Welcome home to idyllic Evergreen living!



Pandora & Joh Erlandson

303-888-6298

pandora@pandorajohnproperties.com

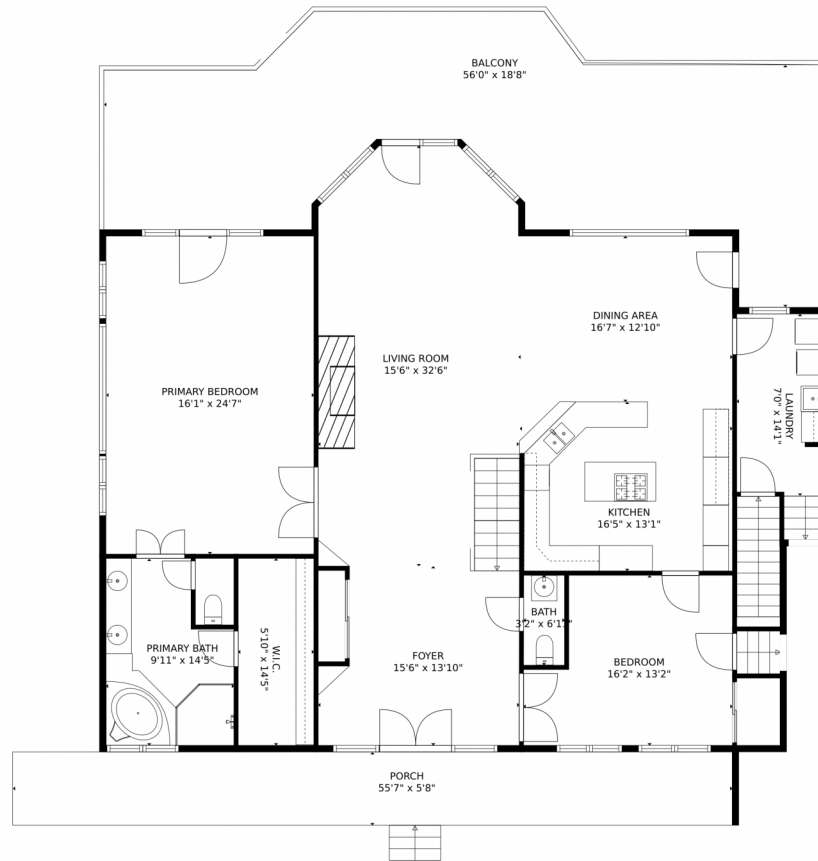
<https://www.pandorajohnproperties.com>



Scan code
for more
property
details



4280 S Meadow Brook Lane, Evergreen, CO 80439 – Main Level



GROSS INTERNAL AREA
FLOOR 1: 2050 sq. ft. FLOOR 2: 2179 sq. ft.
FLOOR 3: 381 sq. ft. FLOOR 4: 118 sq. ft.
EXCLUDED AREAS: , GARAGE: 696 sq. ft.
PATIO: 316 sq. ft. BALCONY: 751 sq. ft.
PORCH: 315 sq. ft.
TOTAL: 4728 sq. ft.

MEASUREMENTS CALCULATED BY V1Photos.com ARE DEEMED HIGHLY RELIABLE BUT NOT GUARANTEED.



Disclaimer: Sizes and Dimensions are Approximate, Actual May Vary.



Pandora & Joh Erlandson

303-888-6298

pandora@pandorajohnproperties.com

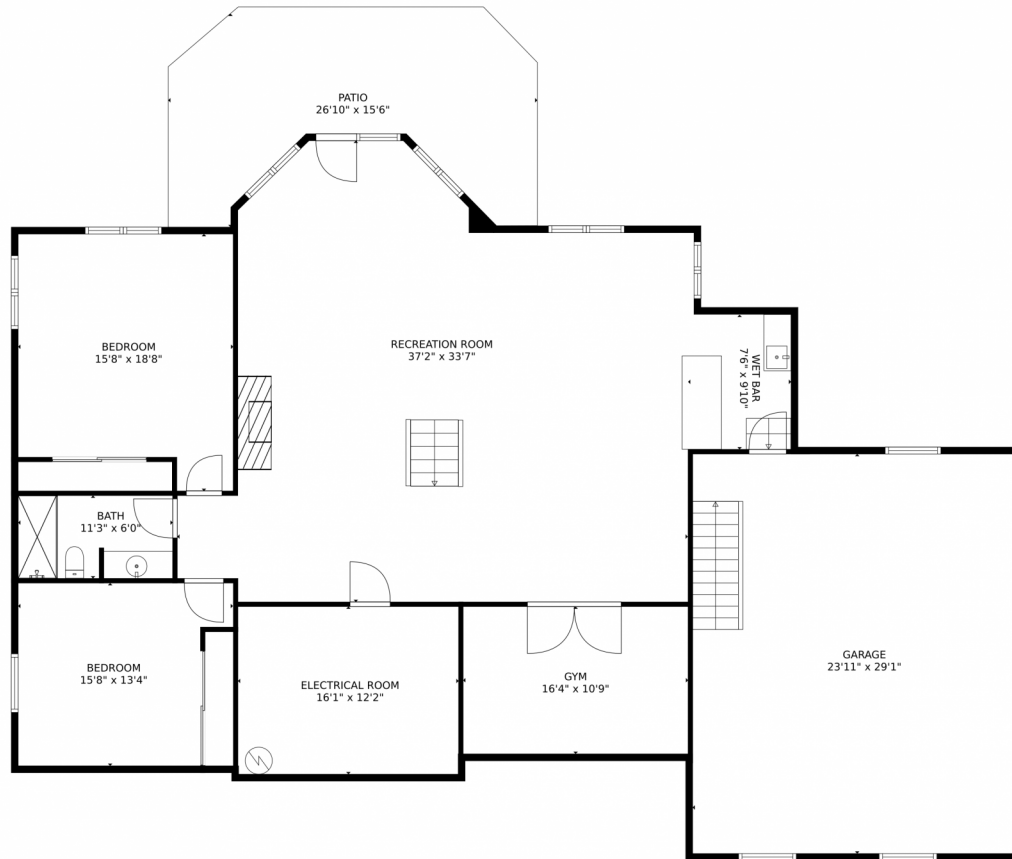
<https://www.pandorajohnproperties.com>



Scan code
for more
property
details



4280 S Meadow Brook Lane, Evergreen, CO 80439 — Lower Level



GROSS INTERNAL AREA
FLOOR 1: 2050 sq. ft. FLOOR 2: 2179 sq. ft.
FLOOR 3: 381 sq. ft. FLOOR 4: 118 sq. ft.
EXCLUDED AREAS: , GARAGE: 696 sq. ft.
PATIO: 316 sq. ft. BALCONY: 751 sq. ft.
PORCH: 315 sq. ft.
TOTAL: 4728 sq. ft.

MEASUREMENTS CALCULATED BY V1Photos.com ARE DEEMED HIGHLY RELIABLE BUT NOT GUARANTEED.



Disclaimer: Sizes and Dimensions are Approximate, Actual May Vary.



Pandora & Joh Erlandson

303-888-6298

pandora@pandorajohnproperties.com

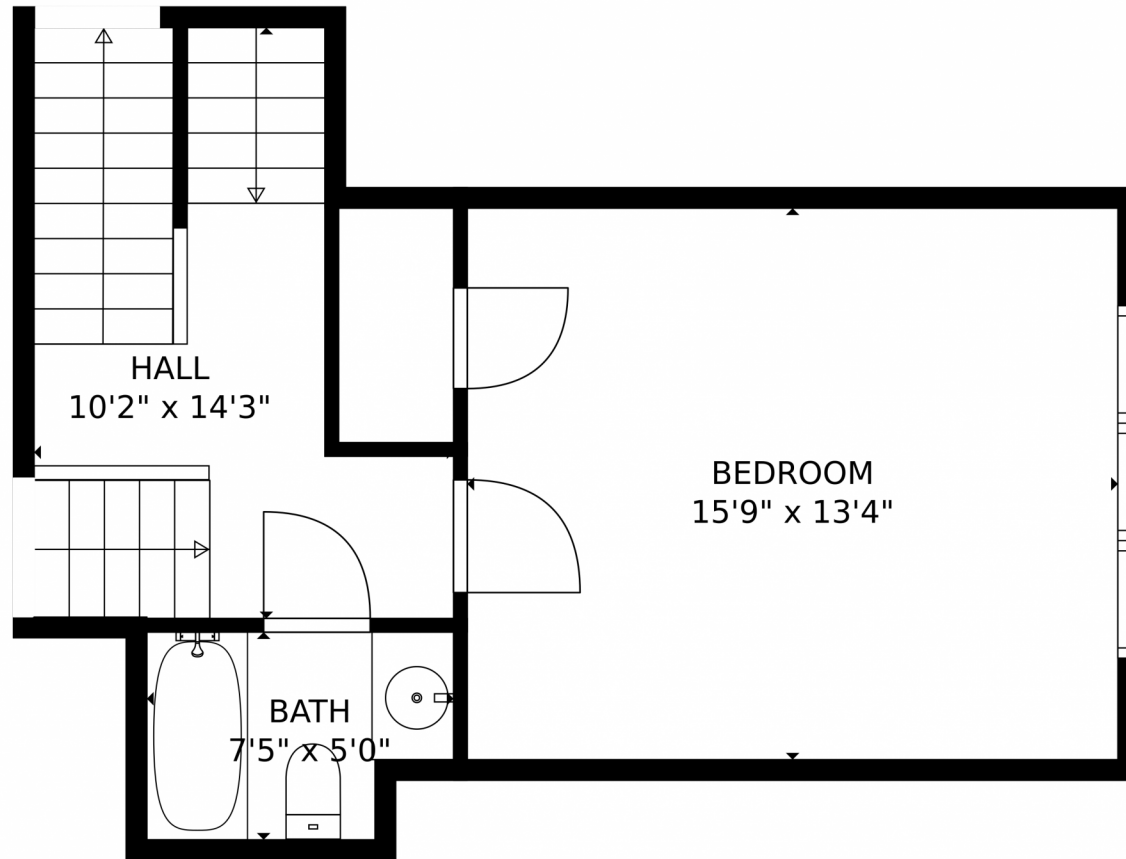
<https://www.pandorajohnproperties.com>



Scan code
for more
property
details



4280 S Meadow Brook Lane, Evergreen, CO 80439 — Upper Level



GROSS INTERNAL AREA
FLOOR 1: 2050 sq. ft. FLOOR 2: 2179 sq. ft.
FLOOR 3: 381 sq. ft. FLOOR 4: 118 sq. ft.
EXCLUDED AREAS: GARAGE: 696 sq. ft.
PATIO: 316 sq. ft. BALCONY: 751 sq. ft.
PORCH: 315 sq. ft.
TOTAL: 4728 sq. ft.

MEASUREMENTS CALCULATED BY V1Photos.com ARE DEEMED HIGHLY RELIABLE BUT NOT GUARANTEED.

Disclaimer: Sizes and Dimensions are Approximate, Actual May Vary.



Pandora & Joh Erlandson

303-888-6298

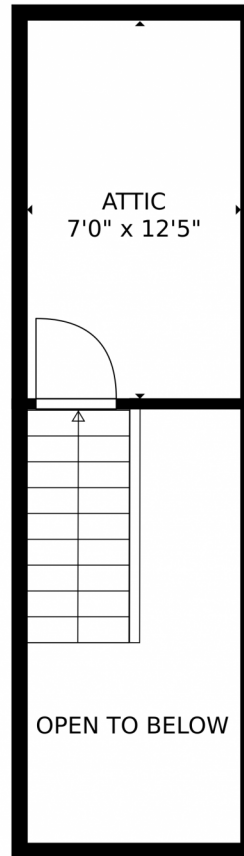
pandora@pandorajohnproperties.com

<https://www.pandorajohnproperties.com>



Scan code
for more
property
details





GROSS INTERNAL AREA
FLOOR 1: 2050 sq. ft. FLOOR 2: 2179 sq. ft.
FLOOR 3: 381 sq. ft. FLOOR 4: 118 sq. ft.
EXCLUDED AREAS: GARAGE: 696 sq. ft.
PATIO: 316 sq. ft. BALCONY: 751 sq. ft.
PORCH: 315 sq. ft.
TOTAL: 4728 sq. ft.

MEASUREMENTS CALCULATED BY V1Photos.com ARE DEEMED HIGHLY RELIABLE BUT NOT GUARANTEED.



Disclaimer: Sizes and Dimensions are Approximate, Actual May Vary.



Pandora & Joh Erlandson

303-888-6298

pandora@pandorajohnproperties.com

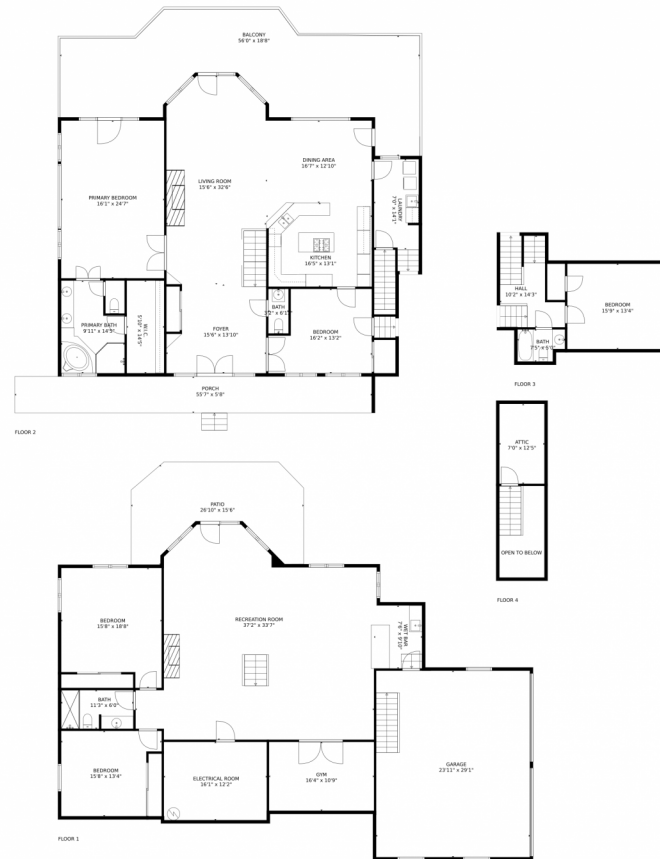
<https://www.pandorajohnproperties.com>



Scan code
for more
property
details



4280 S Meadow Brook Lane, Evergreen, CO 80439 — All Levels



GROSS INTERNAL AREA
FLOOR 1: 2050 sq. ft, FLOOR 2: 2179 sq. ft
FLOOR 3: 381 sq. ft, FLOOR 4: 118 sq. ft
EXCLUDED AREAS: , GARAGE: 696 sq. ft
PATIO: 316 sq. ft, BALCONY: 751 sq. ft
PORCH: 315 sq. ft
TOTAL: 4728 sq. ft

MEASUREMENTS CALCULATED BY V1Photos.com ARE DEEMED HIGHLY RELIABLE BUT NOT GUARANTEED.



Disclaimer: Sizes and Dimensions are Approximate, Actual May Vary.



Pandora & Joh Erlandson
303-888-6298
pandora@pandorajohnproperties.com
<https://www.pandorajohnproperties.com>



Scan code
for more
property
details

