



46496 Sunset View Way
 Parker, CO 80138
 COMMUNITY: Rolling Hills Acres

MLS # 3251700



Single Family



3833 SQFT



4 Beds



3/2 Baths



3 Car



5.41 Acre

PROPERTY DETAILS

Private, personal park minutes from Parker with mountain views! This custom home sits on over 5 acres with ample space to live, work, and play. Enjoy main floor luxury with a primary retreat, office, library, and 5-piece bathroom. The back patio features a serene pond and waterfall. The mature trees and landscaping are stunning, with perennials like Columbines, Lily of the Valley, and Red Roses. The screened-in porch is perfect for chilly evenings. The great room and parlor are ideal for entertaining. Upstairs, there are 3 bedrooms and a jack and jill bathroom. The unfinished walkout basement provides additional options. There are also kennels for pets and a bridle path easement for horses. Truly something for everyone!!!



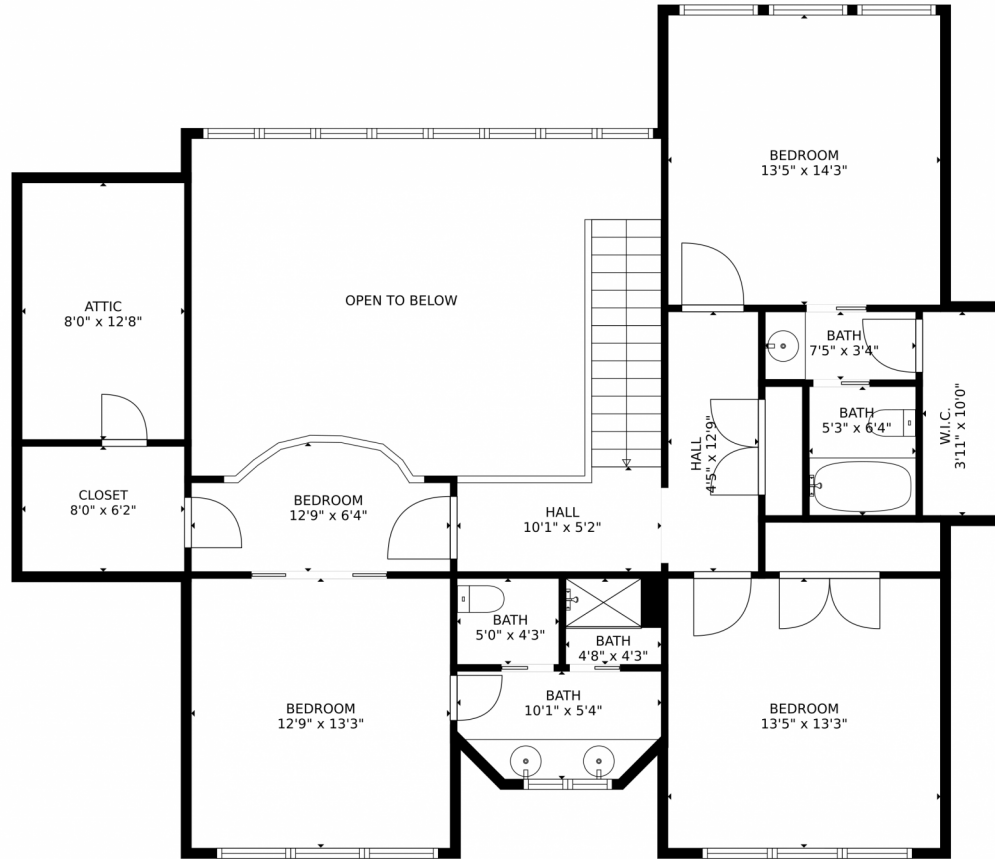
Rebecca Jennings
 303-507-5235
 rebecca.jennings@yahoo.com



Scan code
 for more
 property
 details



46496 Sunset View Way, Parker, CO 80138 – Upper Levels



TOTAL: 5256 sq. ft
Below Ground: 1507 sq. ft, FLOOR 2: 2664 sq. ft, FLOOR 3: 1085 sq. ft
EXCLUDED AREAS: STORAGE: 265 sq. ft, PATIO: 1712 sq. ft, GARAGE: 759 sq. ft,
SCREENED PORCH: 303 sq. ft, PORCH: 311 sq. ft, BALCONY: 201 sq. ft,
EMBEDDED WINDOW: 3 sq. ft, FIREPLACE: 10 sq. ft, ATTIC: 105 sq. ft,
OPEN TO BELOW: 323 sq. ft.

MEASUREMENTS CALCULATED BY V1Photos.com ARE DEEMED HIGHLY RELIABLE BUT NOT GUARANTEED.



Disclaimer: Sizes and Dimensions are Approximate, Actual May Vary.



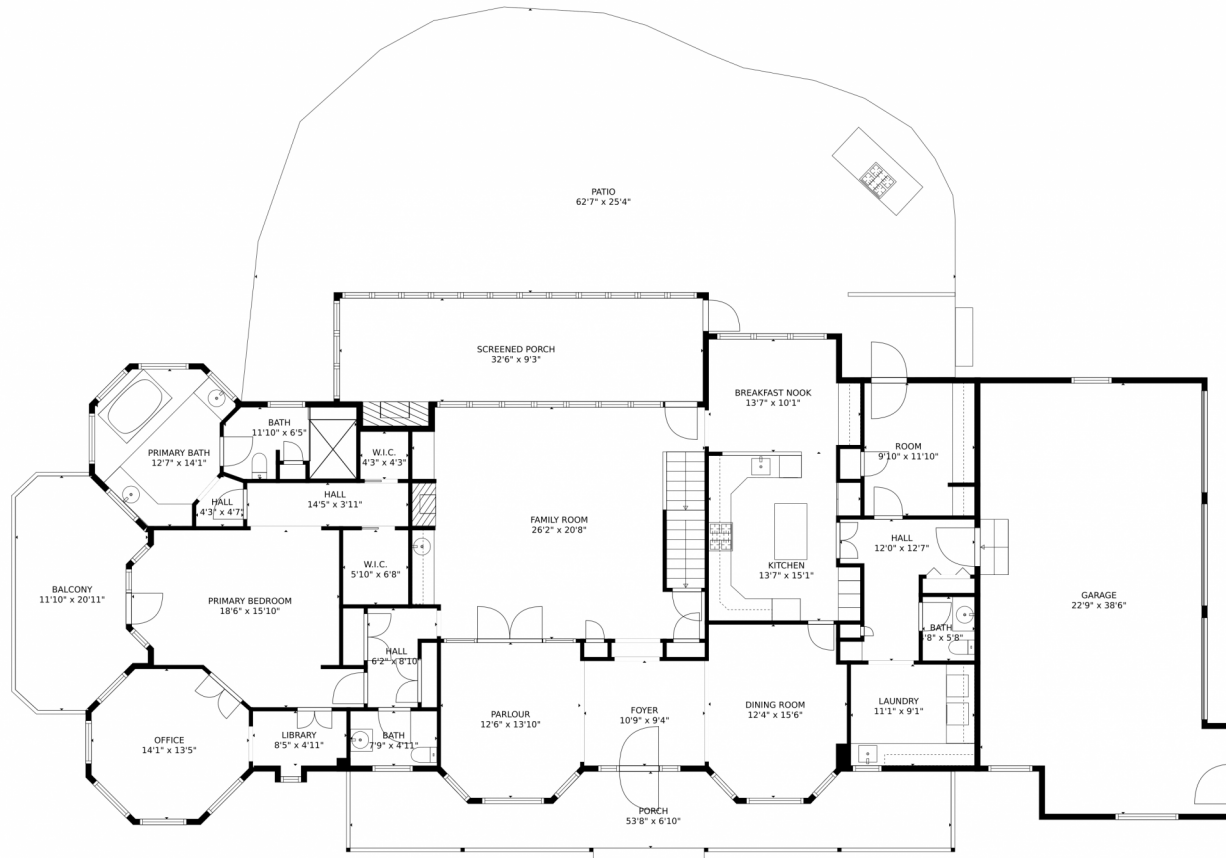
Rebecca Jennings
303-507-5235
rebecca.jennings@yahoo.com



Scan code
for more
property
details



46496 Sunset View Way, Parker, CO 80138 – Main Level



TOTAL: 5256 sq. ft
Below Ground: 1507 sq. ft, FLOOR 2: 2664 sq. ft, FLOOR 3: 1085 sq. ft
EXCLUDED AREAS: STORAGE: 265 sq. ft, PATIO: 1712 sq. ft, GARAGE: 759 sq. ft,
SCREENED PORCH: 303 sq. ft, PORCH: 311 sq. ft, BALCONY: 201 sq. ft,
EMBEDDED WINDOW: 3 sq. ft, FIREPLACE: 10 sq. ft, ATTIC: 105 sq. ft,
OPEN TO BELOW: 323 sq. ft.

MEASUREMENTS CALCULATED BY V1Photos.com ARE DEEMED HIGHLY RELIABLE BUT NOT GUARANTEED.



Disclaimer: Sizes and Dimensions are Approximate, Actual May Vary.



Rebecca Jennings
303-507-5235
rebecca.jennings@yahoo.com

