




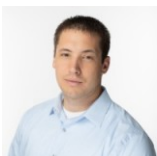
 Single Family

 2300 SQFT

 4 Beds

 3 Baths

 2 Car

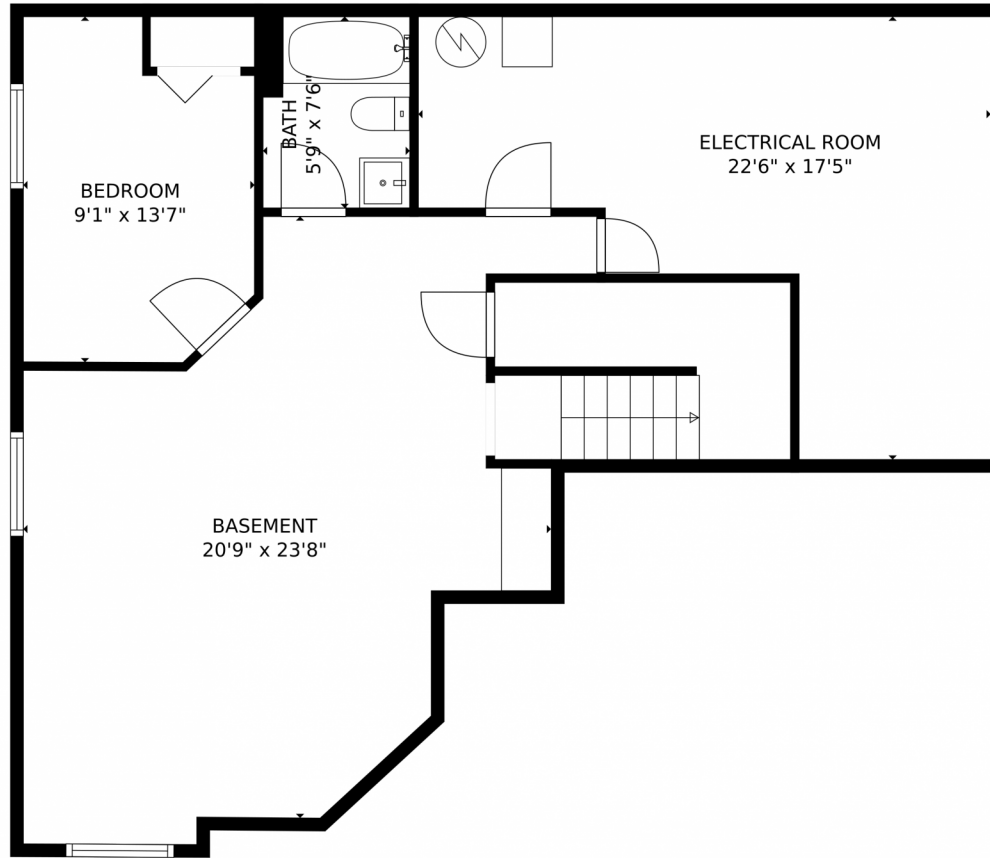


Jordan Kermes
952-956-2958
jordan@kermesllc.com

Scan code
for more
property
details



3943 Bison Ln, Pueblo, CO 81005 – Lower Level



GROSS INTERNAL AREA
Below Ground: 563 sq. ft, FLOOR 2: 1087 sq. ft
EXCLUDED AREAS: UNDEFINED: 86 sq. ft, ELECTRICAL ROOM: 264 sq. ft, GARAGE: 361 sq. ft,
PORCH: 40 sq. ft, PATIO: 548 sq. ft
TOTAL: 1650 sq. ft
MEASUREMENTS CALCULATED BY V1Photos.COM ARE DEEMED HIGHLY RELIABLE BUT NOT GUARANTEED.



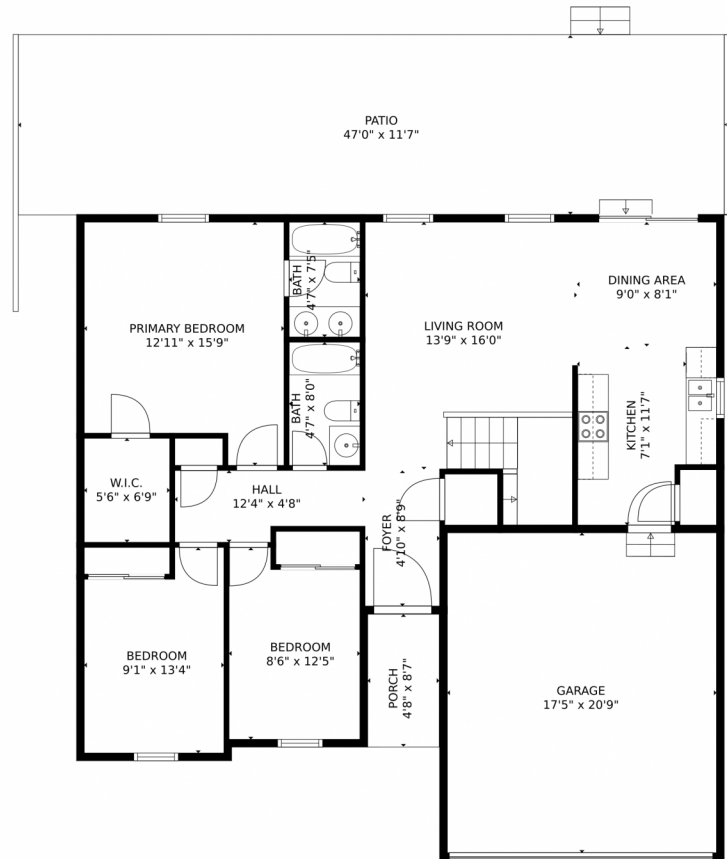
Disclaimer: Sizes and Dimensions are Approximate, Actual May Vary.



Jordan Kermes
952-956-2958
jordan@kermesllc.com



3943 Bison Ln, Pueblo, CO 81005 – Main Level



GROSS INTERNAL AREA
Below Ground: 563 sq. ft, FLOOR 2: 1087 sq. ft
EXCLUDED AREAS: UNDEFINED: 86 sq. ft, ELECTRICAL ROOM: 264 sq. ft, GARAGE: 361 sq. ft,
PORCH: 40 sq. ft, PATIO: 548 sq. ft
TOTAL: 1650 sq. ft
MEASUREMENTS CALCULATED BY V1Photos.com ARE DEEMED HIGHLY RELIABLE BUT NOT GUARANTEED.



Disclaimer: Sizes and Dimensions are Approximate, Actual May Vary.



Jordan Kermes
952-956-2958
jordan@kermesllc.com



3943 Bison Ln, Pueblo, CO 81005 – All Levels



GROSS INTERNAL AREA
Below Ground: 563 sq. ft, FLOOR 2: 1087 sq. ft
EXCLUDED AREAS: UNDEFINED: 86 sq. ft, ELECTRICAL ROOM: 264 sq. ft, GARAGE: 361 sq. ft,
PORCH: 40 sq. ft, PATIO: 548 sq. ft
TOTAL: 1650 sq. ft
MEASUREMENTS CALCULATED BY V1Photos.COM ARE DEEMED HIGHLY RELIABLE BUT NOT GUARANTEED.



Disclaimer: Sizes and Dimensions are Approximate, Actual May Vary.



Jordan Kermes
952-956-2958
jordan@kermesllc.com



Scan code
for more
property
details

