

COMPASS

221 Whispering Pines
Boulder, CO 80302
COMMUNITY: Sunshine Canyon

MLS # 991465
PRICE \$1,799,000



Single Family



5132 SQFT



4 Beds



4 Baths



2 Car

PROPERTY DETAILS

Located in Sunshine Canyon, just 14 minutes from downtown, this elegant mountain home offers stunning views on 5.5+ acres. Recently renovated to the highest standards, this private sanctuary features a modern design with a porcelain tiled fireplace, new kitchen, and quartz countertops. The main level includes a spacious primary bedroom with a fireplace and spa-like bathroom. The walkout lower level has its own private entry, gym, recording studio, living room, and study. Additional features include a Trex deck, fire pit patio, landscaping, and a 2400 gallon cistern. Hiking, biking, and skiing opportunities are nearby.



Brooke Weathers

303-898-6564

brooke.weathers@compass.com

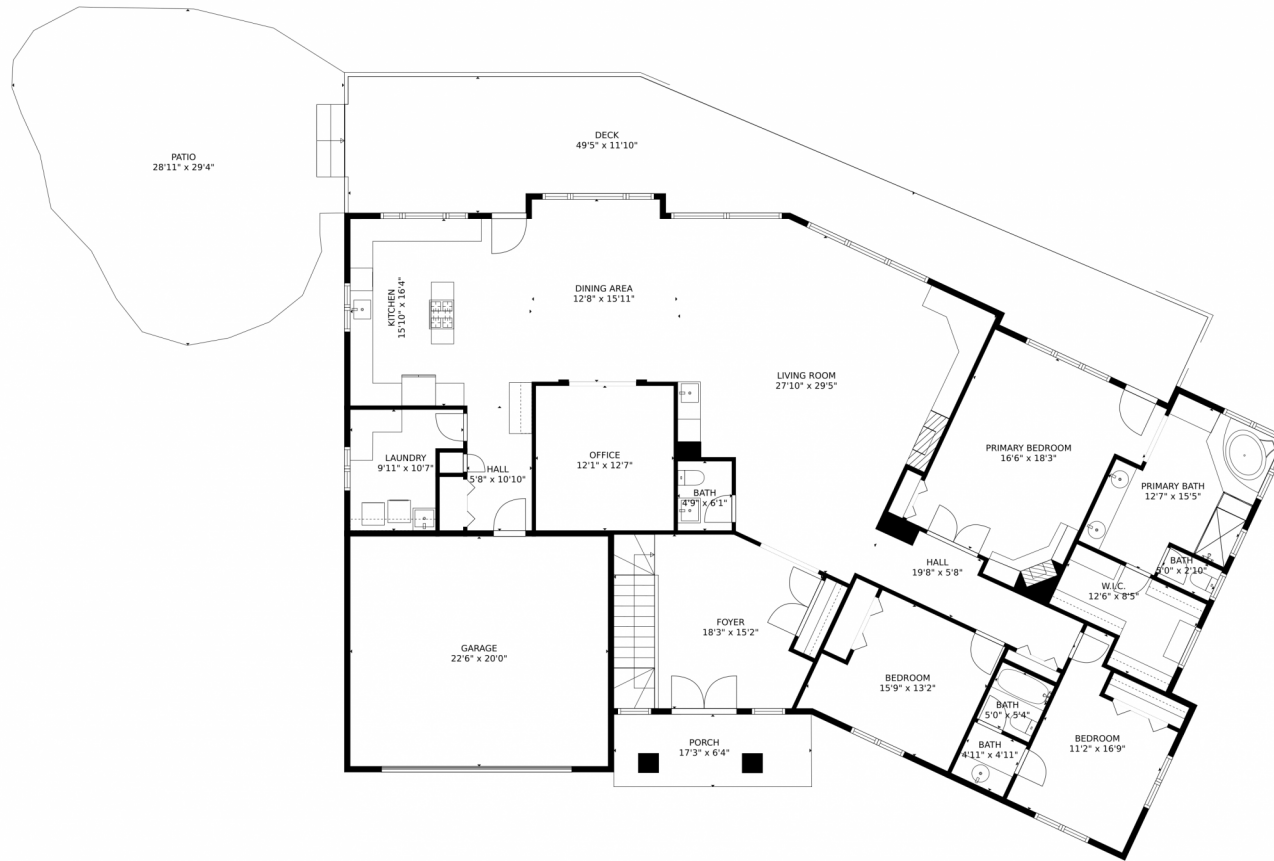
<https://boulderproperties.net/>



Scan code
for more
property
details



221 Whispering Pines, Boulder, CO 80302 – Main Level



GROSS INTERNAL AREA
Below Ground: 1848 sq. ft, FLOOR 2: 2773 sq. ft
EXCLUDED AREAS: ELECTRICAL ROOM: 78 sq. ft, CRAWL SPACE: 733 sq. ft, PATIO: 678 sq. ft,
GARAGE: 452 sq. ft, DECK: 673 sq. ft, PORCH: 109 sq. ft
TOTAL: 4621 sq. ft
MEASUREMENTS CALCULATED BY V1Photos.COM ARE DEEMED HIGHLY RELIABLE BUT NOT GUARANTEED.



Disclaimer: Sizes and Dimensions are Approximate, Actual May Vary.



Brooke Weathers
303-898-6564
brooke.weathers@compass.com
<https://boulderproperties.net/>



Scan code
for more
property
details



221 Whispering Pines, Boulder, CO 80302 – Basement



GROSS INTERNAL AREA
Below Ground: 1848 sq. ft, FLOOR 2: 2773 sq. ft
EXCLUDED AREAS: ELECTRICAL ROOM: 78 sq. ft, CRAWL SPACE: 733 sq. ft, PATIO: 678 sq. ft,
GARAGE: 452 sq. ft, DECK: 673 sq. ft, PORCH: 109 sq. ft
TOTAL: 4621 sq. ft
MEASUREMENTS CALCULATED BY V1Photos.COM ARE DEEMED HIGHLY RELIABLE BUT NOT GUARANTEED.



Disclaimer: Sizes and Dimensions are Approximate, Actual May Vary.



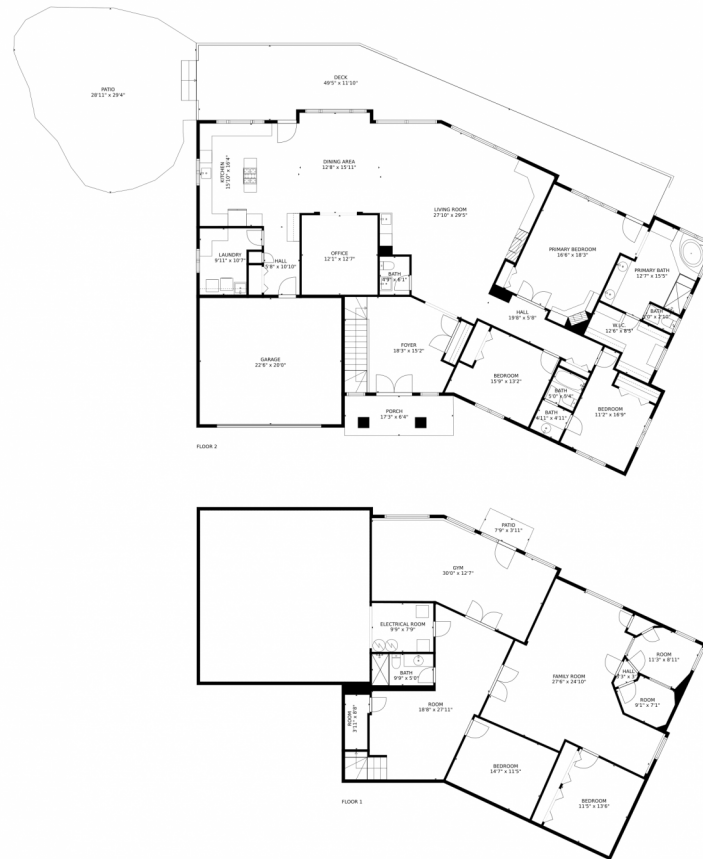
Brooke Weathers
303-898-6564
brooke.weathers@compass.com
<https://boulderproperties.net/>



Scan code
for more
property
details



221 Whispering Pines, Boulder, CO 80302 – All Levels



GROSS INTERNAL AREA
Below Ground: 1848 sq. ft, FLOOR 2: 2773 sq. ft
EXCLUDED AREAS: ELECTRICAL ROOM: 78 sq. ft, CRAWL SPACE: 733 sq. ft, PATIO: 678 sq. ft,
GARAGE: 452 sq. ft, DECK: 673 sq. ft, PORCH: 109 sq. ft
TOTAL: 4621 sq. ft
MEASUREMENTS CALCULATED BY V1Photos.COM ARE DEEMED HIGHLY RELIABLE BUT NOT GUARANTEED.



Disclaimer: Sizes and Dimensions are Approximate, Actual May Vary.



Brooke Weathers
303-898-6564
brooke.weathers@compass.com
<https://boulderproperties.net/>



Scan code
for more
property
details

