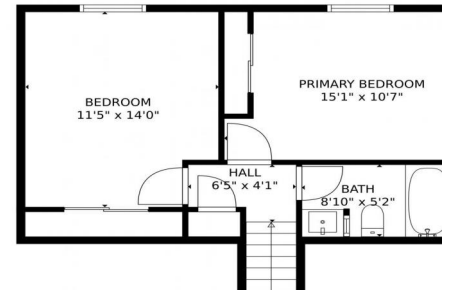




3233 McIntosh Court, Loveland, CO 80538 - Upper Level



 Single Family
  1522 SQFT
  3 Beds
  2 Baths
  2 Car
  0.19 Acre

PROPERTY DETAILS

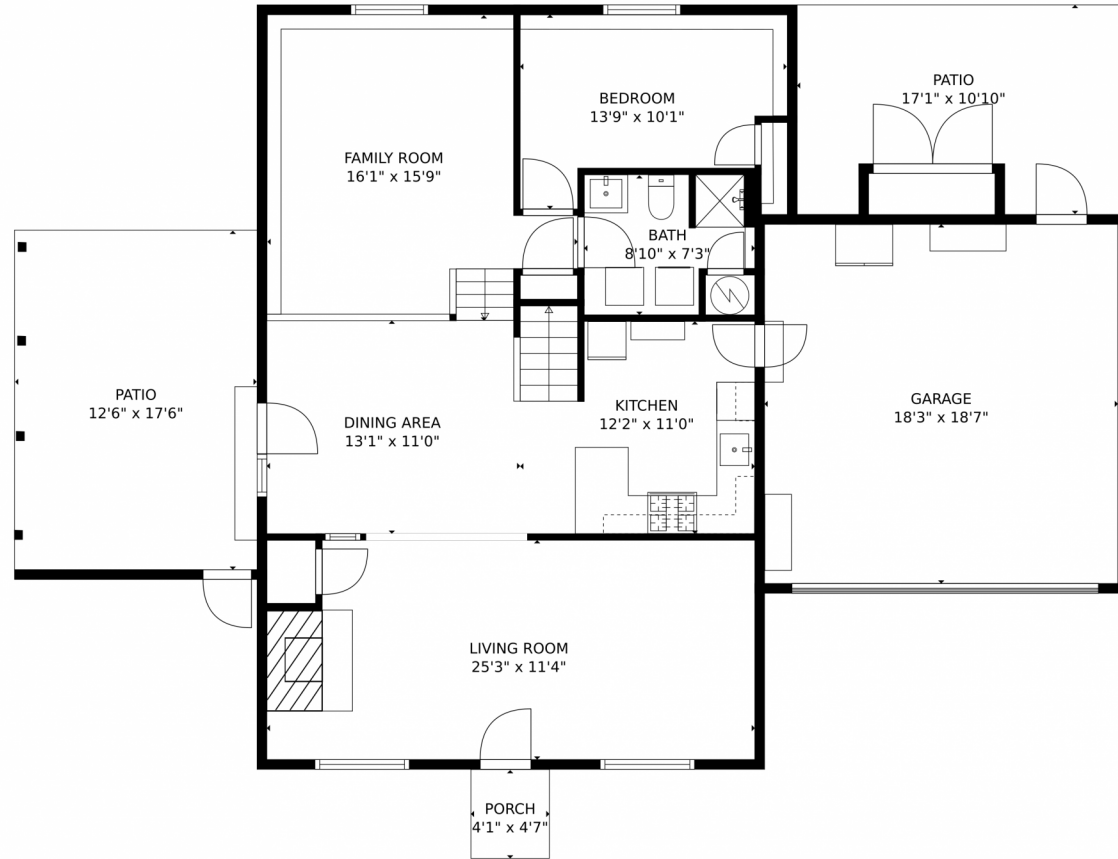
Welcome to your dream home! This gorgeous 3 bed 2 bath house is situated on a large lot and offers plenty of space for the whole family. With no HOA, you can enjoy a low-maintenance lifestyle while still having the freedom to customize your outdoor living area. Updated features like new carpet, gas line for stove, water filtration system, AC and bathroom remodel with quartz surround tub and shower will make life easier and more comfortable. In addition, this home's kitchen has been recently updated with appliances, countertops and backsplash so you can cook up your favorite meals in style! But that's not all - outside you'll find RV PARKING, and an expansive backyard garden complete with a greenhouse and chicken coop area as well as patio seating so you can enjoy the outdoors without ever leaving home! Plus, with its close proximity to Boyd & Horseshoe Lakes there are plenty of activities nearby if you're looking for some adventure. Don't miss out on this opportunity - schedule a showing today!



Alexis Foster
970-310-6999
alexisfoster@windermere.com



3233 McIntosh Court, Loveland, CO 80538 – Main Level



GROSS INTERNAL AREA
FLOOR 1: 1003 sq. ft, FLOOR 2: 436 sq. ft
EXCLUDED AREAS: GARAGE: 339 sq. ft, PORCH: 19 sq. ft, PATIO: 385 sq. ft
TOTAL: 1439 sq. ft
MEASUREMENTS CALCULATED BY V1Photos.com ARE DEEMED HIGHLY RELIABLE BUT NOT GUARANTEED.



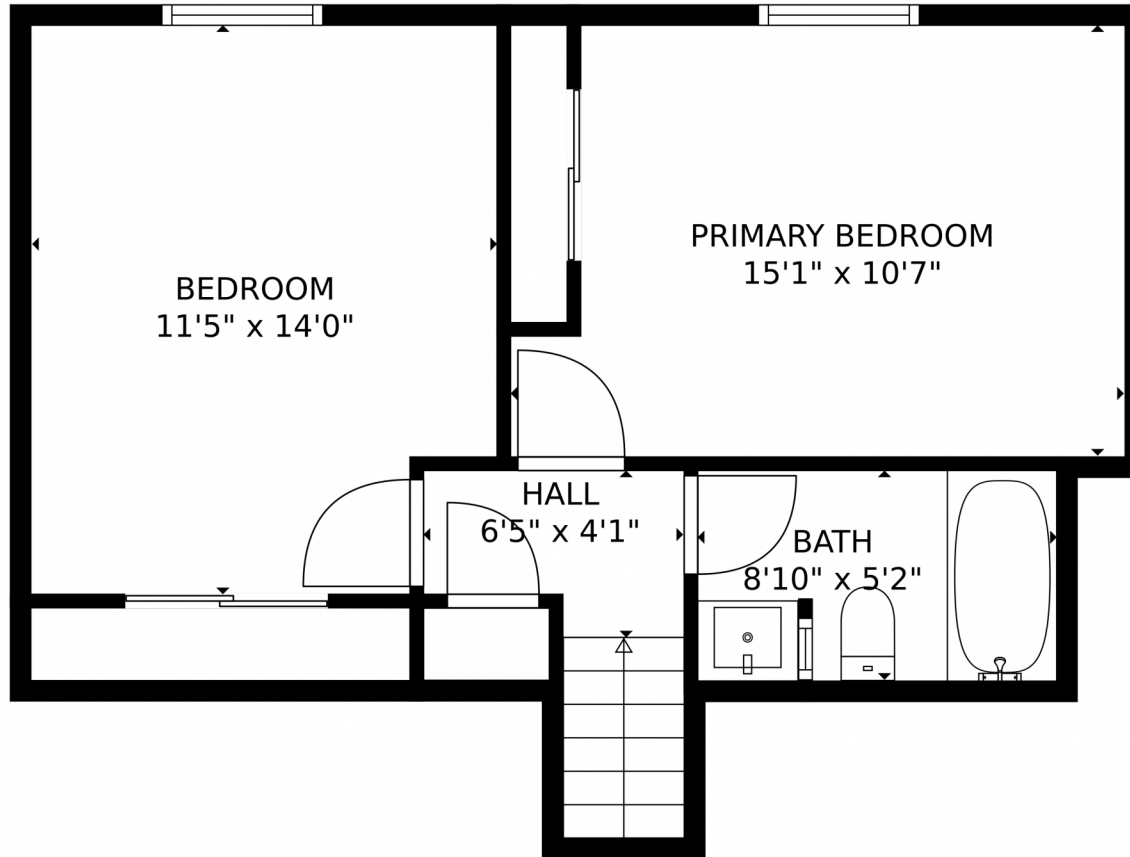
Disclaimer: Sizes and Dimensions are Approximate, Actual May Vary.



Alexis Foster
970-310-6999
alexisfoster@windermere.com



3233 McIntosh Court, Loveland, CO 80538 – Upper Level



GROSS INTERNAL AREA
FLOOR 1: 1003 sq. ft, FLOOR 2: 436 sq. ft
EXCLUDED AREAS: GARAGE: 339 sq. ft, PORCH: 19 sq. ft, PATIO: 385 sq. ft
TOTAL: 1439 sq. ft
MEASUREMENTS CALCULATED BY V1Photos.COM ARE DEEMED HIGHLY RELIABLE BUT NOT GUARANTEED.



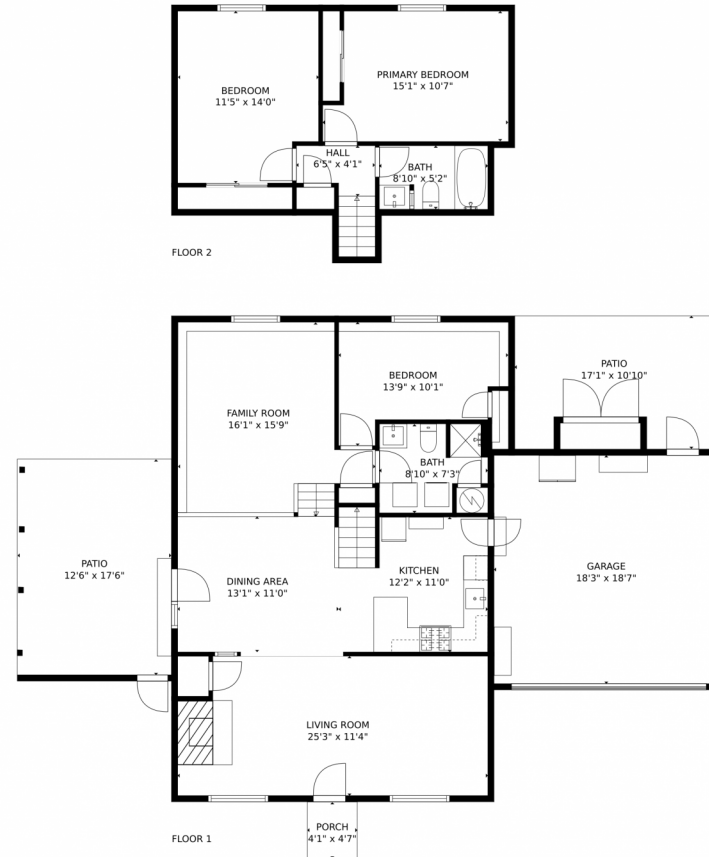
Disclaimer: Sizes and Dimensions are Approximate, Actual May Vary.



Alexis Foster
970-310-6999
alexisfoster@windermere.com



3233 McIntosh Court, Loveland, CO 80538 – All Levels



GROSS INTERNAL AREA
FLOOR 1: 1003 sq. ft, FLOOR 2: 436 sq. ft
EXCLUDED AREAS: GARAGE: 339 sq. ft, PORCH: 19 sq. ft, PATIO: 385 sq. ft
TOTAL: 1439 sq. ft
MEASUREMENTS CALCULATED BY V1Photos.COM ARE DEEMED HIGHLY RELIABLE BUT NOT GUARANTEED.



Disclaimer: Sizes and Dimensions are Approximate, Actual May Vary.



Alexis Foster
970-310-6999
alexisfoster@windermere.com

