



6736 South Flanders Court
Aurora, CO 80016
COMMUNITY: Estancia

PRICE
\$1,650,000



6736 South Flanders Court, Aurora, CO 80016 - Main Level



Single Family

4500 SQFT

5 Beds

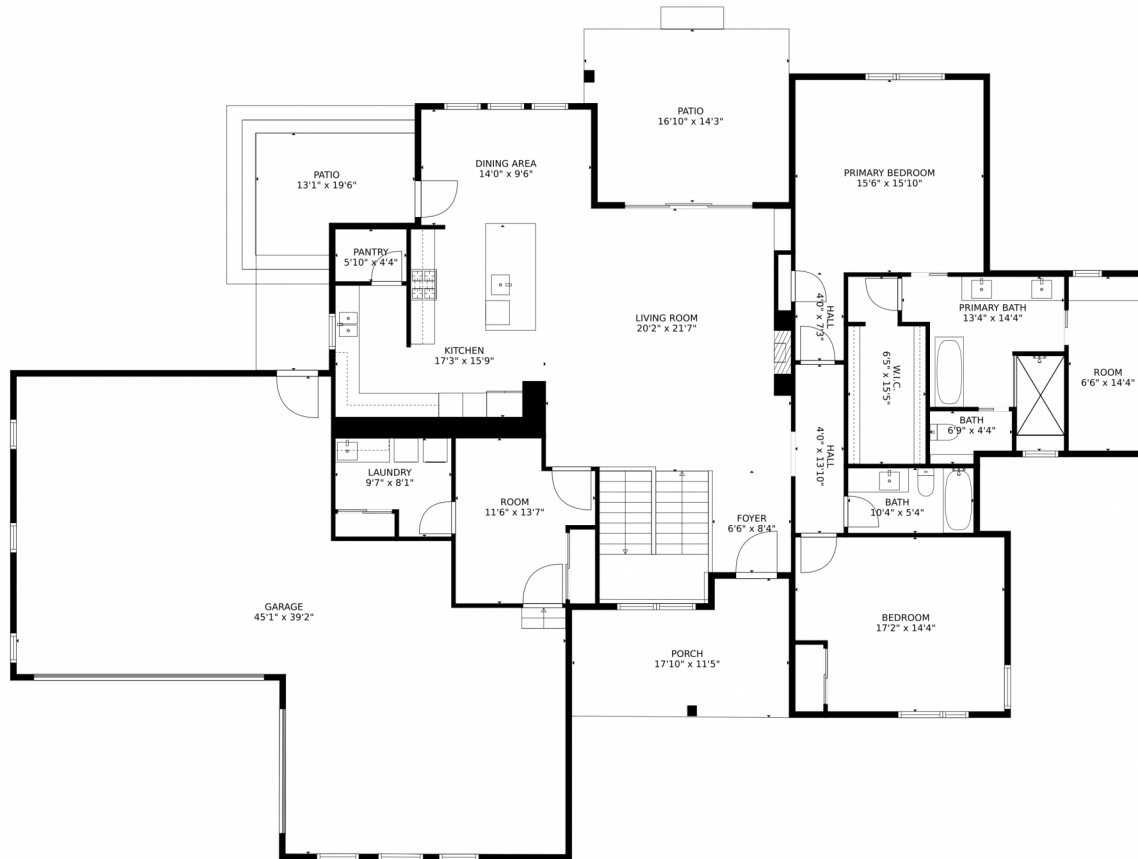
5 Baths

1 Acre

Sabrina Apodaca
720-331-3500
sabrina@apodacateam.com



6736 South Flanders Court, Aurora, CO 80016 – Main Level



GROSS INTERNAL AREA
Below Ground: 1648 sq. ft. FLOOR 2: 2269 sq. ft.
EXCLUDED AREAS: UNFINISHED BASEMENT: 418 sq. ft. PATIO: 400 sq. ft. PORCH: 173 sq. ft.
GARAGE: 1131 sq. ft.
TOTAL: 3917 sq. ft.
MEASUREMENTS CALCULATED BY V1Photos.COM ARE DEEMED HIGHLY RELIABLE BUT NOT GUARANTEED.

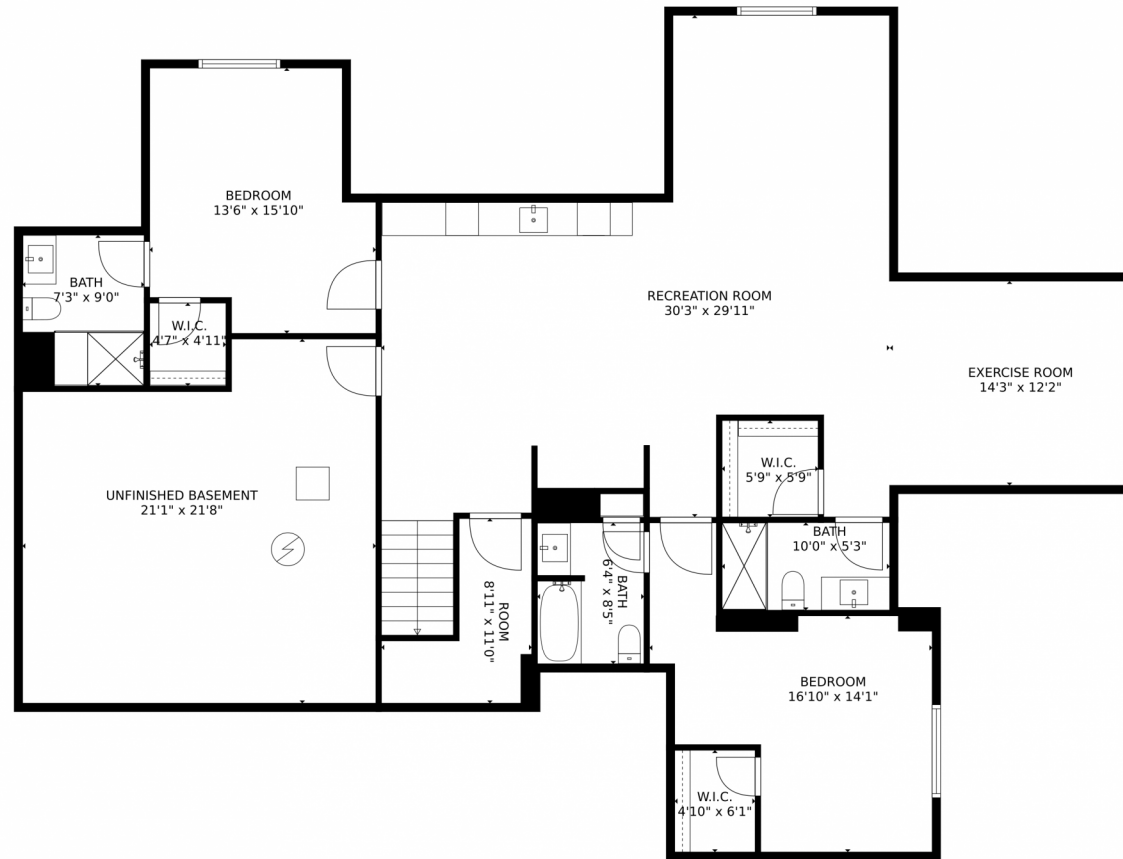


Disclaimer: Sizes and Dimensions are Approximate, Actual May Vary.

Sabrina Apodaca
720-331-3500
sabrina@apodacateam.com



6736 South Flanders Court, Aurora, CO 80016 – Basement



GROSS INTERNAL AREA
Below Ground: 1648 sq. ft. FLOOR 2: 2269 sq. ft.
EXCLUDED AREAS: UNFINISHED BASEMENT: 418 sq. ft. PATIO: 400 sq. ft. PORCH: 173 sq. ft.
GARAGE: 1131 sq. ft.
TOTAL: 3917 sq. ft.
MEASUREMENTS CALCULATED BY V1Photos.com ARE DEEMED HIGHLY RELIABLE BUT NOT GUARANTEED.

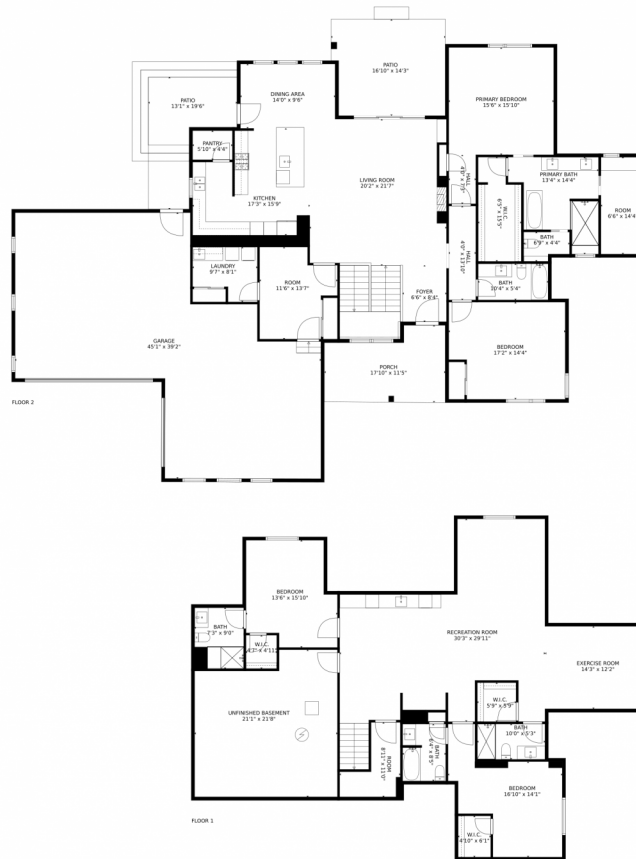


Disclaimer: Sizes and Dimensions are Approximate, Actual May Vary.

Sabrina Apodaca
720-331-3500
sabrina@apodacateam.com



6736 South Flanders Court, Aurora, CO 80016 – All Levels



GROSS INTERNAL AREA
Below Ground: 1648 sq. ft. FLOOR 2: 2269 sq. ft.
EXCLUDED AREAS: UNFINISHED BASEMENT: 418 sq. ft. PATIO: 400 sq. ft. PORCH: 173 sq. ft.
GARAGE: 1131 sq. ft.
TOTAL: 3917 sq. ft.
MEASUREMENTS CALCULATED BY V1Photos.com ARE DEEMED HIGHLY RELIABLE BUT NOT GUARANTEED.



Disclaimer: Sizes and Dimensions are Approximate, Actual May Vary.

Sabrina Apodaca
720-331-3500
sabrina@apodacateam.com

