



Single Family



2744 SQFT



3 Beds



2/1 Baths



2 Car



0.15 Acre

PROPERTY DETAILS

Welcome home! This lovely patio home in the coveted Mariana Butte neighborhood is move-in ready. Situated on a corner lot with gorgeous mountain views and just a short walk to the Mariana Butte golf course and hiking trails, this is the place you want to call home. This ranch style home has a main floor primary bedroom with a large ensuite bathroom with a soaking tub and a spacious walk-in closet. The bright kitchen features skylights and opens up to the living room with a gas fireplace and a beautiful picture window. The dedicated office space, laundry room and large deck off the back make this the perfect home for main floor living. The finished basement includes a family room, 2 additional bedrooms and a bathroom. There is an unfinished storage room to finish off your basement space.



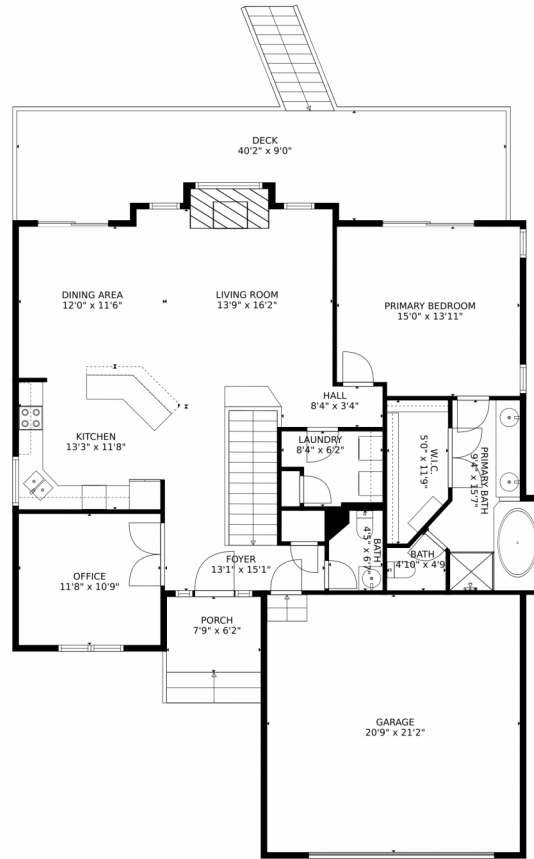
Karla Laferriere
970-703-4112
karlalaferriere@windermere.com



Scan code
for more
property
details



473 Mariana Pointe Drive, Loveland, CO 80537 – Main Level



GROSS INTERNAL AREA
Below Ground: 979 sq. ft, FLOOR 2: 1318 sq. ft
EXCLUDED AREAS: ELECTRICAL ROOM: 220 sq. ft, GARAGE: 438 sq. ft, PORCH: 67 sq. ft.
DECK: 382 sq. ft, FIREPLACE: 8 sq. ft
TOTAL: 2297 sq. ft
MEASUREMENTS CALCULATED BY V1Photos.COM ARE DEEMED HIGHLY RELIABLE BUT NOT GUARANTEED.



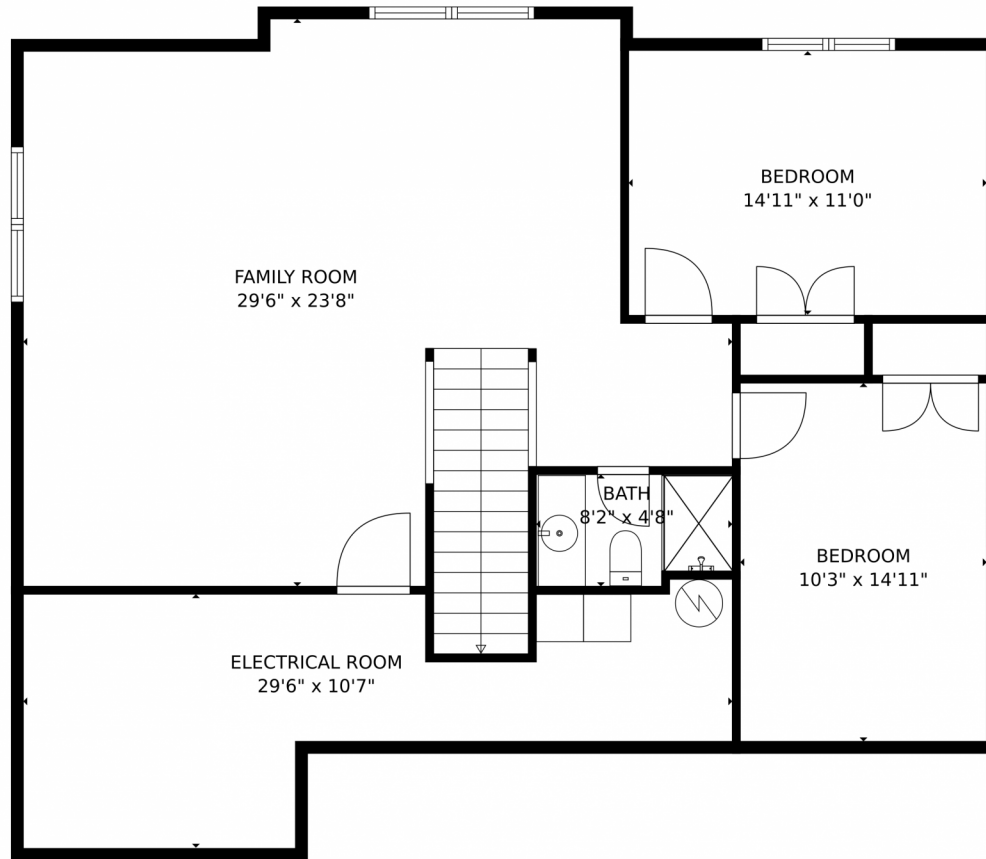
Disclaimer: Sizes and Dimensions are Approximate, Actual May Vary.



Karla Laferriere
970-703-4112
karlalaferriere@windermere.com



473 Mariana Pointe Drive, Loveland, CO 80537 – Lower Level



GROSS INTERNAL AREA
Below Ground: 979 sq. ft, FLOOR 2: 1318 sq. ft
EXCLUDED AREAS: ELECTRICAL ROOM: 220 sq. ft, GARAGE: 438 sq. ft, PORCH: 67 sq. ft,
DECK: 382 sq. ft, FIREPLACE: 8 sq. ft
TOTAL: 2297 sq. ft
MEASUREMENTS CALCULATED BY V1Photos.com ARE DEEMED HIGHLY RELIABLE BUT NOT GUARANTEED.



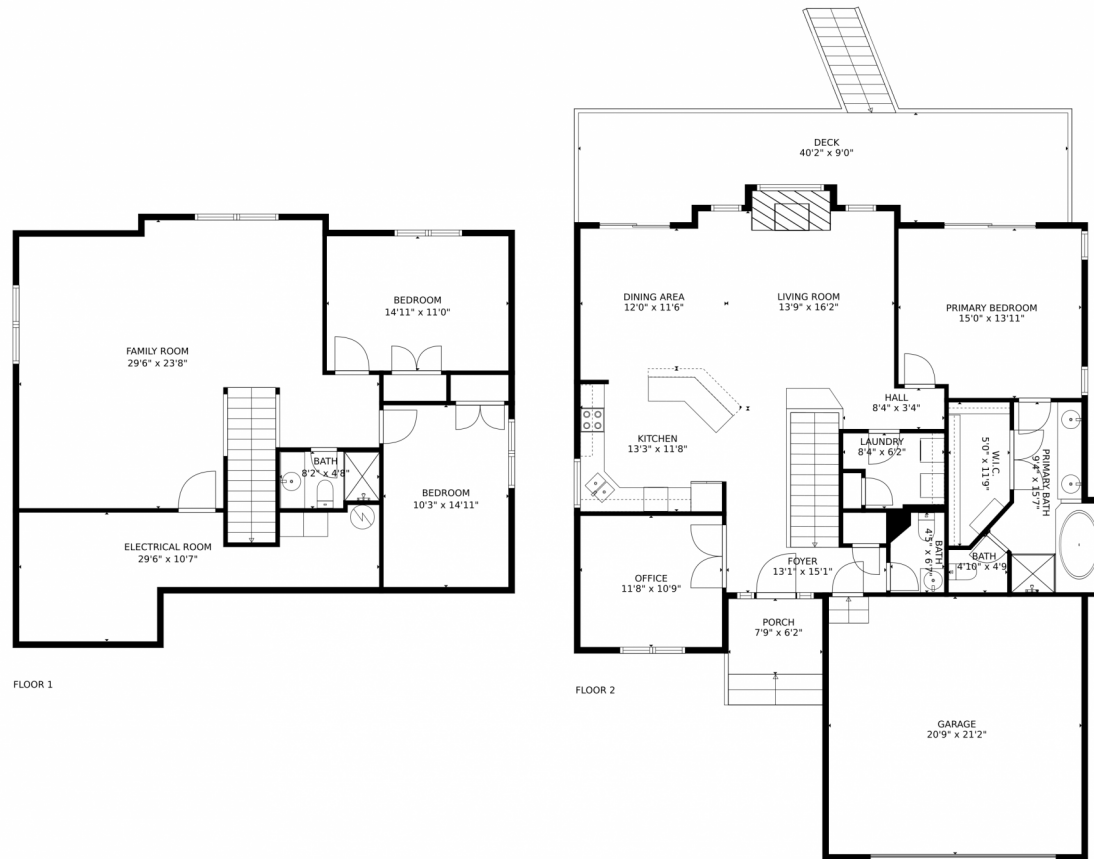
Disclaimer: Sizes and Dimensions are Approximate, Actual May Vary.



Karla Laferriere
970-703-4112
karlalaferriere@windermere.com



473 Mariana Pointe Drive, Loveland, CO 80537 – All Levels



GROSS INTERNAL AREA
Below Ground: 979 sq. ft, FLOOR 2: 1318 sq. ft
EXCLUDED AREAS: ELECTRICAL ROOM: 220 sq. ft, GARAGE: 438 sq. ft, PORCH: 67 sq. ft,
DECK: 382 sq. ft, FIREPLACE: 8 sq. ft
TOTAL: 2297 sq. ft
MEASUREMENTS CALCULATED BY V1Photos.com ARE DEEMED HIGHLY RELIABLE BUT NOT GUARANTEED.



Disclaimer: Sizes and Dimensions are Approximate, Actual May Vary.



Karla Laferriere
970-703-4112
karlalaferriere@windermere.com

