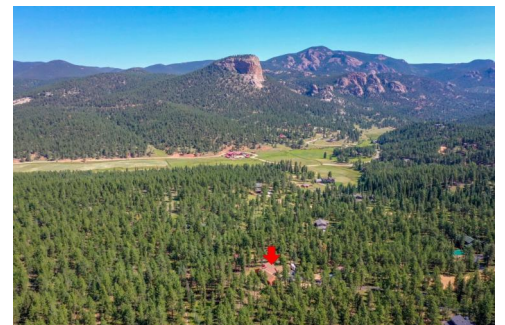




411 Spring Drive
Pine, CO 80470



 Single Family  3068 SQFT

PROPERTY DETAILS

Welcome to 411 Spring Drive in Pine, CO! This spacious single-family home offers 3068 sqft of living space, providing plenty of room for comfortable living. With a range of desirable features and upgrades, this property is sure to impress potential buyers. The main living areas feature hardwood floors and high ceilings, creating a bright and open atmosphere. The kitchen is a chef's dream, with stainless steel appliances and light countertops. The living room is a perfect space for relaxation, with a cozy fireplace and plenty of natural light.

Outside, you'll find a spacious deck, perfect for outdoor entertaining or simply enjoying the beautiful surroundings. The backyard offers a peaceful retreat, with a well-maintained lawn and stunning mountain views. Additional features of this property include a detached garage.

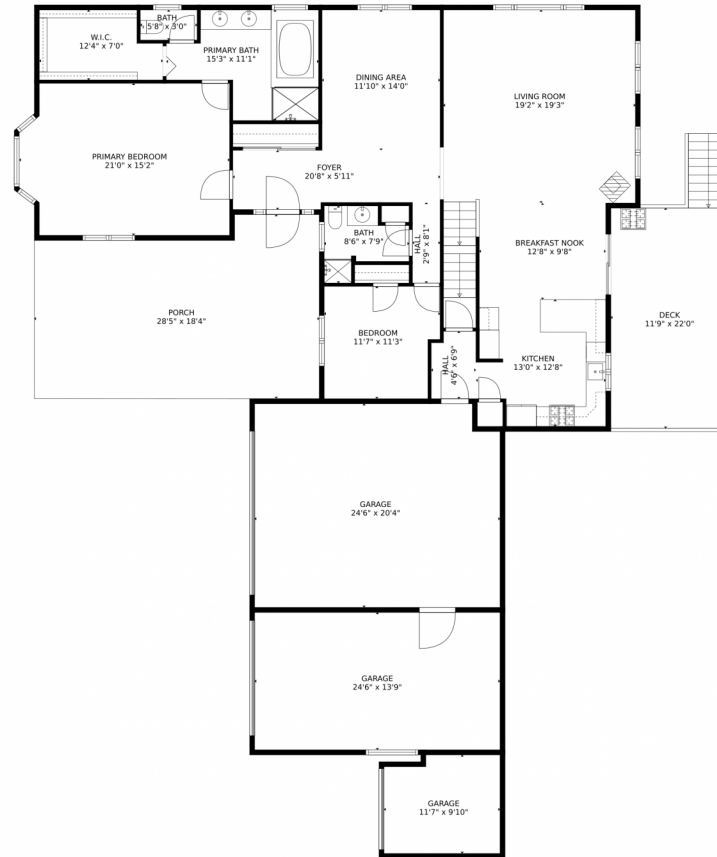
Located in the charming community of Pine, this property offers a serene and picturesque setting. Residents can enjoy a variety of outdoor activities, as well as easy access to nearby amenities and attractions. Don't miss out on the opportunity to call this property home!



Holly Worley
303-257-8091
findahomewithholly@gmail.com



411 Spring Drive, Pine, CO 80470 – Main Level



GROSS INTERNAL AREA
Below Ground: 0 sq. ft, FLOOR 2: 809 sq. ft, FLOOR 3: 0 sq. ft, FLOOR 4: 1814 sq. ft, FLOOR 5: 645 sq. ft
EXCLUDED AREAS: STABLE: 850 sq. ft, ELECTRICAL ROOM: 49 sq. ft, STORAGE: 196 sq. ft,
UNFINISHED BASEMENT: 600 sq. ft, PATIO: 106 sq. ft, GARAGE: 1761 sq. ft,
PORCH: 472 sq. ft, DECK: 288 sq. ft, OPEN TO BELOW: 231 sq. ft
TOTAL: 3268 sq. ft
MEASUREMENTS CALCULATED BY V1Photos.COM ARE DEEMED HIGHLY RELIABLE BUT NOT GUARANTEED.



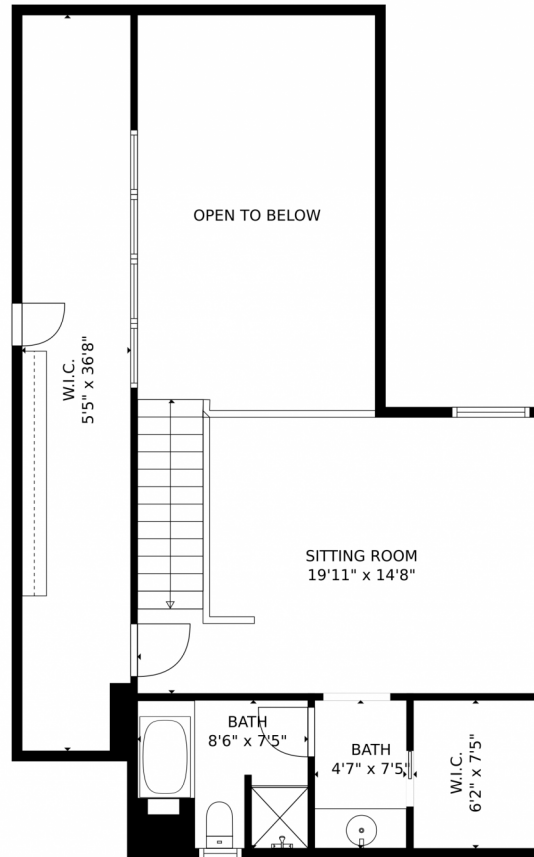
Disclaimer: Sizes and Dimensions are Approximate, Actual May Vary.



Holly Worley
303-257-8091
findahomewithholly@gmail.com



411 Spring Drive, Pine, CO 80470 – Second Level



GROSS INTERNAL AREA
Below Ground: 0 sq. ft, FLOOR 2: 809 sq. ft, FLOOR 3: 0 sq. ft, FLOOR 4: 1814 sq. ft, FLOOR 5: 645 sq. ft
EXCLUDED AREAS: STABLE: 850 sq. ft, ELECTRICAL ROOM: 49 sq. ft, STORAGE: 196 sq. ft,
UNFINISHED BASEMENT: 600 sq. ft, PATIO: 106 sq. ft, GARAGE: 1761 sq. ft,
PORCH: 472 sq. ft, DECK: 288 sq. ft, OPEN TO BELOW: 231 sq. ft
TOTAL: 3268 sq. ft
MEASUREMENTS CALCULATED BY V1Photos.COM ARE DEEMED HIGHLY RELIABLE BUT NOT GUARANTEED.



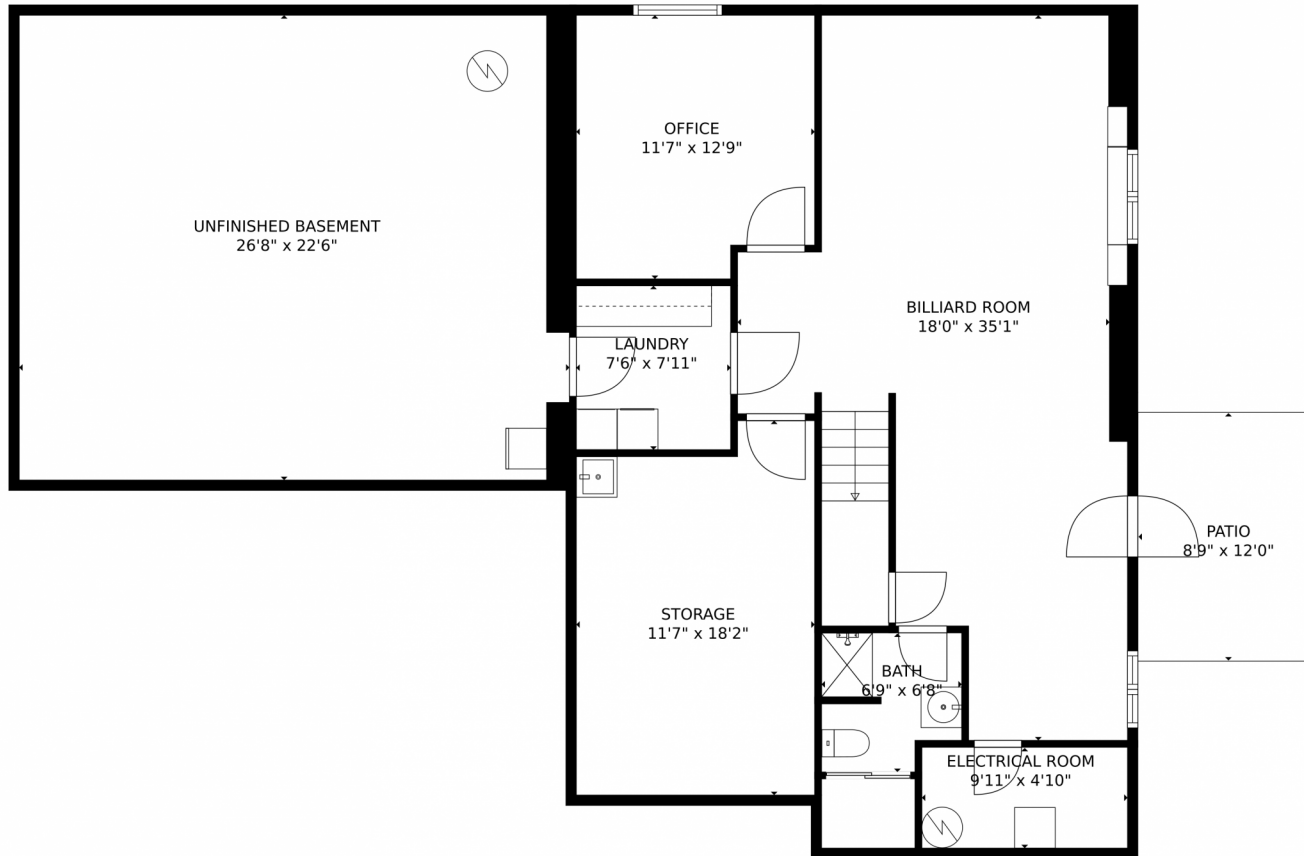
Disclaimer: Sizes and Dimensions are Approximate, Actual May Vary.



Holly Worley
303-257-8091
findahomewithholly@gmail.com



411 Spring Drive, Pine, CO 80470 – Lower Level



GROSS INTERNAL AREA
Below Ground: 0 sq. ft, FLOOR 2: 809 sq. ft, FLOOR 3: 0 sq. ft, FLOOR 4: 1814 sq. ft, FLOOR 5: 645 sq. ft
EXCLUDED AREAS: STABLE: 850 sq. ft, ELECTRICAL ROOM: 49 sq. ft, STORAGE: 196 sq. ft,
UNFINISHED BASEMENT: 600 sq. ft, PATIO: 106 sq. ft, GARAGE: 1761 sq. ft,
PORCH: 472 sq. ft, DECK: 288 sq. ft, OPEN TO BELOW: 231 sq. ft
TOTAL: 3268 sq. ft
MEASUREMENTS CALCULATED BY V1Photos.COM ARE DEEMED HIGHLY RELIABLE BUT NOT GUARANTEED.



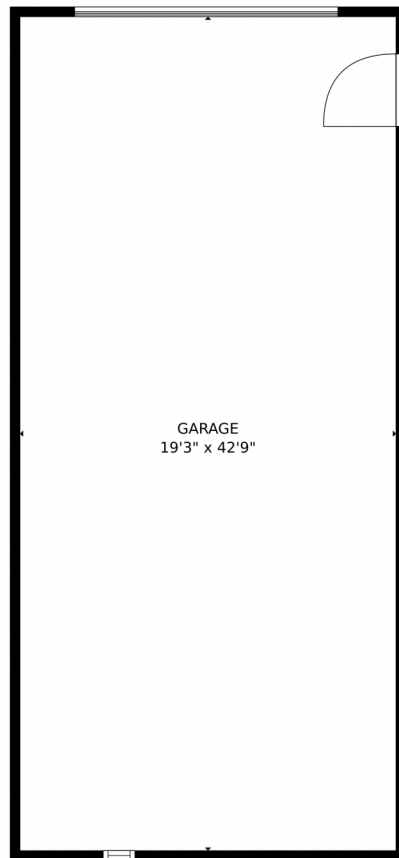
Disclaimer: Sizes and Dimensions are Approximate, Actual May Vary.



Holly Worley
303-257-8091
findahomewithholly@gmail.com



411 Spring Drive, Pine, CO 80470 – Detached Garage



GROSS INTERNAL AREA
Below Ground: 0 sq. ft, FLOOR 2: 809 sq. ft, FLOOR 3: 0 sq. ft, FLOOR 4: 1814 sq. ft, FLOOR 5: 645 sq. ft
EXCLUDED AREAS: STABLE: 850 sq. ft, ELECTRICAL ROOM: 49 sq. ft, STORAGE: 196 sq. ft,
UNFINISHED BASEMENT: 600 sq. ft, PATIO: 106 sq. ft, GARAGE: 1761 sq. ft,
PORCH: 472 sq. ft, DECK: 288 sq. ft, OPEN TO BELOW: 231 sq. ft
TOTAL: 3268 sq. ft
MEASUREMENTS CALCULATED BY V1Photos.com ARE DEEMED HIGHLY RELIABLE BUT NOT GUARANTEED.



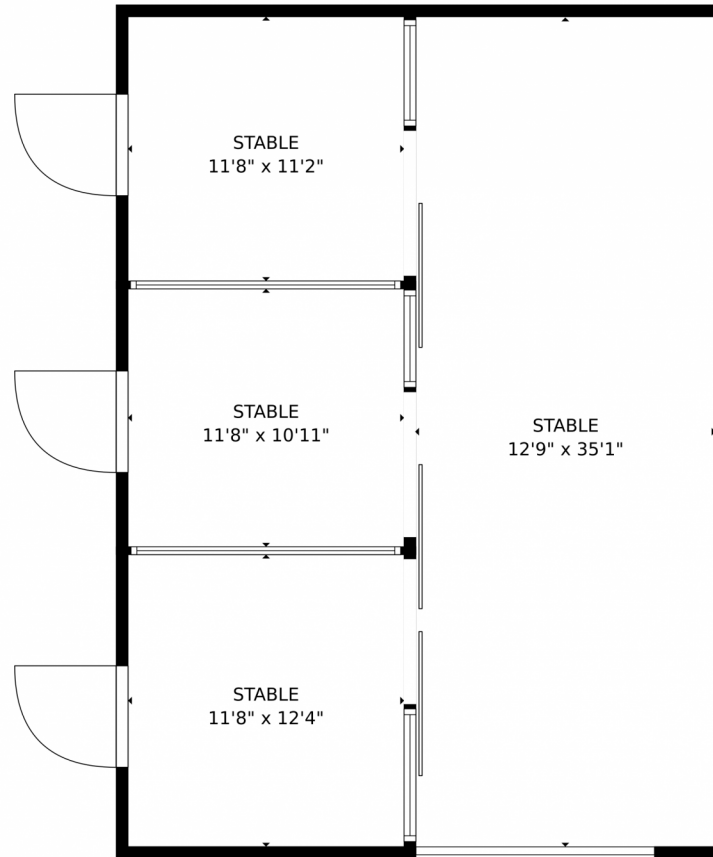
Disclaimer: Sizes and Dimensions are Approximate, Actual May Vary.



Holly Worley
303-257-8091
findahomewithholly@gmail.com



411 Spring Drive, Pine, CO 80470 – Stable



GROSS INTERNAL AREA
Below Ground: 0 sq. ft, FLOOR 2: 809 sq. ft, FLOOR 3: 0 sq. ft, FLOOR 4: 1814 sq. ft, FLOOR 5: 645 sq. ft
EXCLUDED AREAS: STABLE: 850 sq. ft, ELECTRICAL ROOM: 49 sq. ft, STORAGE: 196 sq. ft,
UNFINISHED BASEMENT: 600 sq. ft, PATIO: 106 sq. ft, GARAGE: 1761 sq. ft,
PORCH: 472 sq. ft, DECK: 288 sq. ft, OPEN TO BELOW: 231 sq. ft
TOTAL: 3268 sq. ft
MEASUREMENTS CALCULATED BY V1Photos.com ARE DEEMED HIGHLY RELIABLE BUT NOT GUARANTEED.



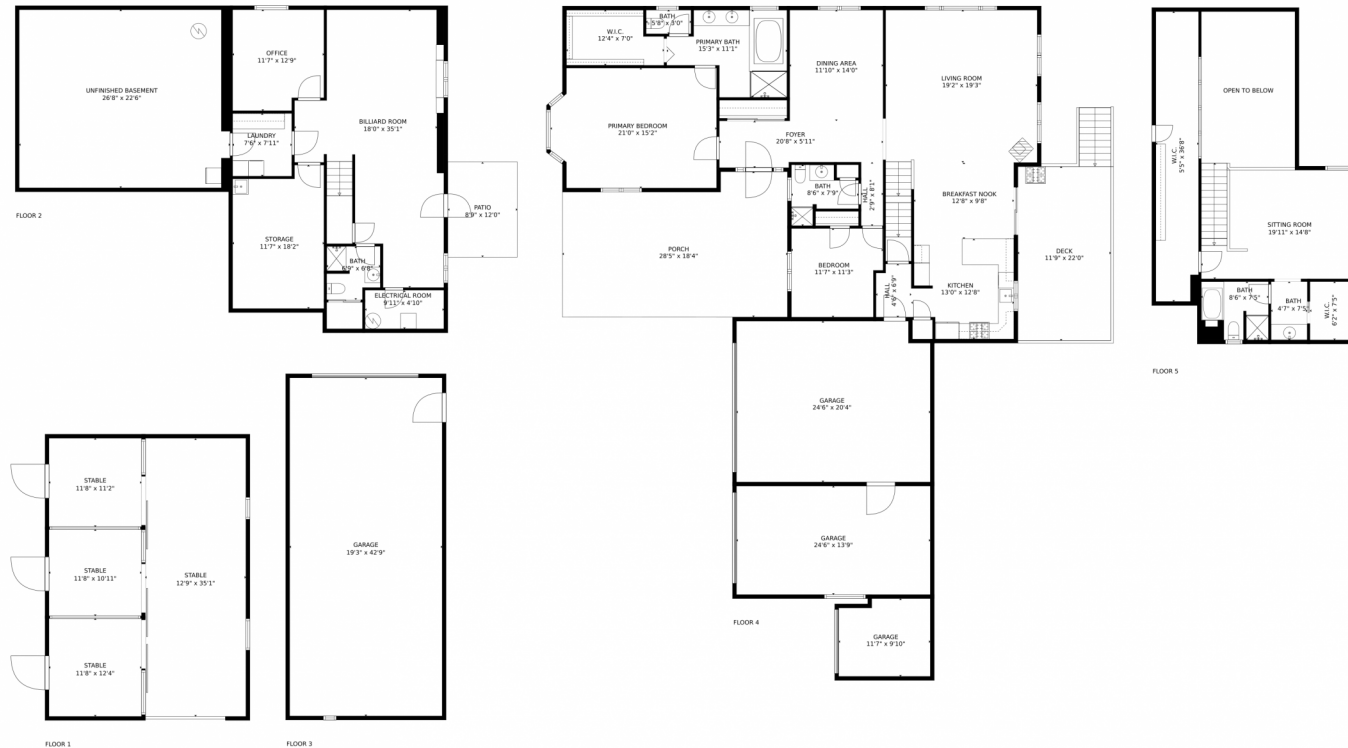
Disclaimer: Sizes and Dimensions are Approximate, Actual May Vary.



Holly Worley
303-257-8091
findahomewithholly@gmail.com



411 Spring Drive, Pine, CO 80470 – All Levels



GROSS INTERNAL AREA
 Below Ground: 0 sq. ft, FLOOR 2: 809 sq. ft, FLOOR 3: 0 sq. ft, FLOOR 4: 1814 sq. ft, FLOOR 5: 645 sq. ft
EXCLUDED AREAS: STABLE: 850 sq. ft, ELECTRICAL ROOM: 49 sq. ft, STORAGE: 196 sq. ft,
 UNFINISHED BASEMENT: 600 sq. ft, PATIO: 106 sq. ft, GARAGE: 1761 sq. ft,
 PORCH: 472 sq. ft, DECK: 288 sq. ft, OPEN TO BELOW: 231 sq. ft
TOTAL: 3268 sq. ft
 MEASUREMENTS CALCULATED BY V1Photos.com ARE DEEMED HIGHLY RELIABLE BUT NOT GUARANTEED.



Disclaimer: Sizes and Dimensions are Approximate, Actual May Vary.



Holly Worley
 303-257-8091
 findahomewithholly@gmail.com



Scan code
 for more
 property
 details

