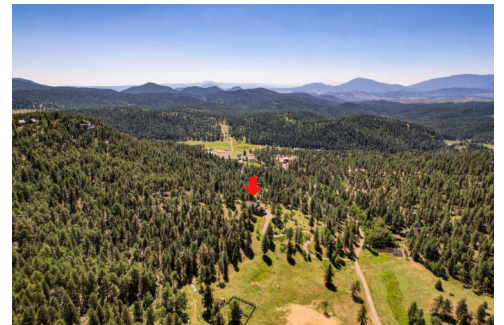




12386 Calfee Gulch Road
Conifer, CO 80433



Single Family



4000 SQFT

PROPERTY DETAILS

Welcome to this stunning single-family property located at 12386 Calfee Gulch Road in Conifer, CO. With 4000 sqft of living space, this home offers the perfect combination of comfort and style.

The property features a charming porch, a deck with a gazebo and fireplace, and breathtaking mountain views. Inside, you'll find a cozy living room with a fireplace, high ceilings, and french doors. The dining area is equally inviting, with hardwood floors and another fireplace.

The property also includes a basement with a tankless water heater, walk-in closets, comfortable bedrooms, and beautifully tiled bathrooms. The kitchen is a chef's dream, with stone counters, stainless steel appliances, and an island with a sink.

With its spacious rooms, stunning outdoor spaces, and a range of desirable features, this property is a true gem. Don't miss out on the opportunity to make it your own.



Trisha Karstetter & Elliot Pappas

720-934-4477

trisha@spiritbearrealty.com

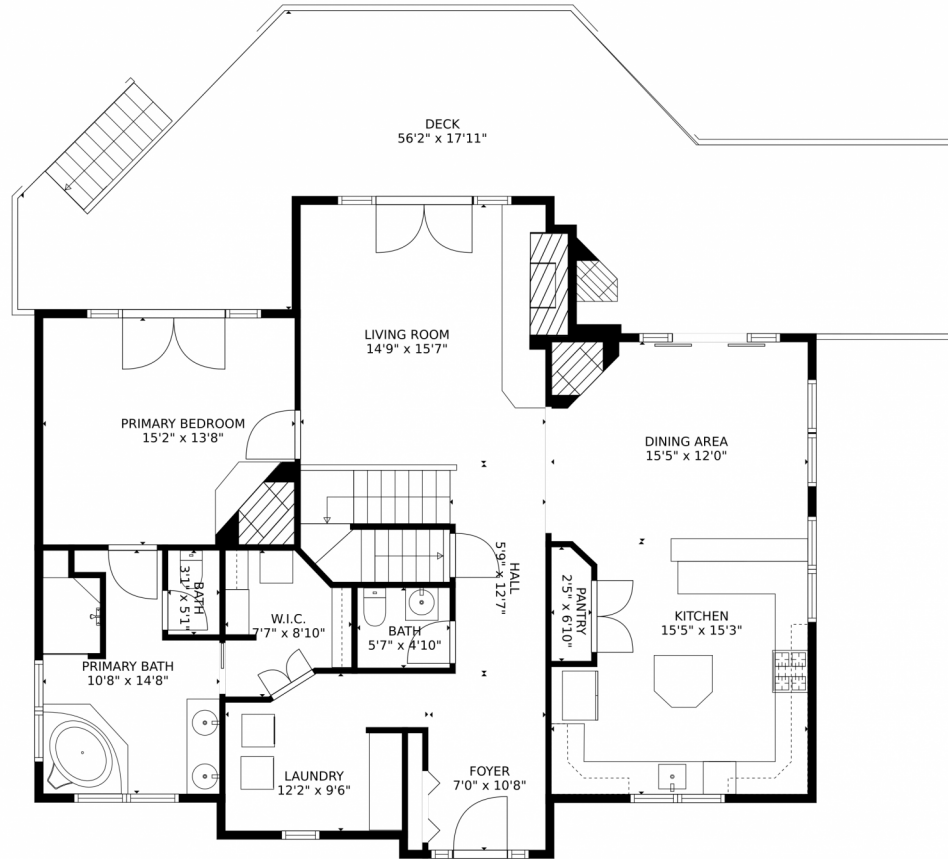
<http://www.SpiritBearRealty.com>



Scan code
for more
property
details



12386 Calfee Gulch Road, Conifer, CO 80433 – Main Level



GROSS INTERNAL AREA
Below Ground: 797 sq. ft, FLOOR 2: 1458 sq. ft, FLOOR 3: 737 sq. ft
EXCLUDED AREAS: ELECTRICAL ROOM: 203 sq. ft, GARAGE: 642 sq. ft, DECK: 660 sq. ft,
OPEN TO BELOW: 275 sq. ft
TOTAL: 2992 sq. ft
MEASUREMENTS CALCULATED BY V1Photos.com ARE DEEMED HIGHLY RELIABLE BUT NOT GUARANTEED.



Disclaimer: Sizes and Dimensions are Approximate, Actual May Vary.



Trisha Karstetter & Elliot Pappas

720-934-4477

trisha@spiritbearrealty.com

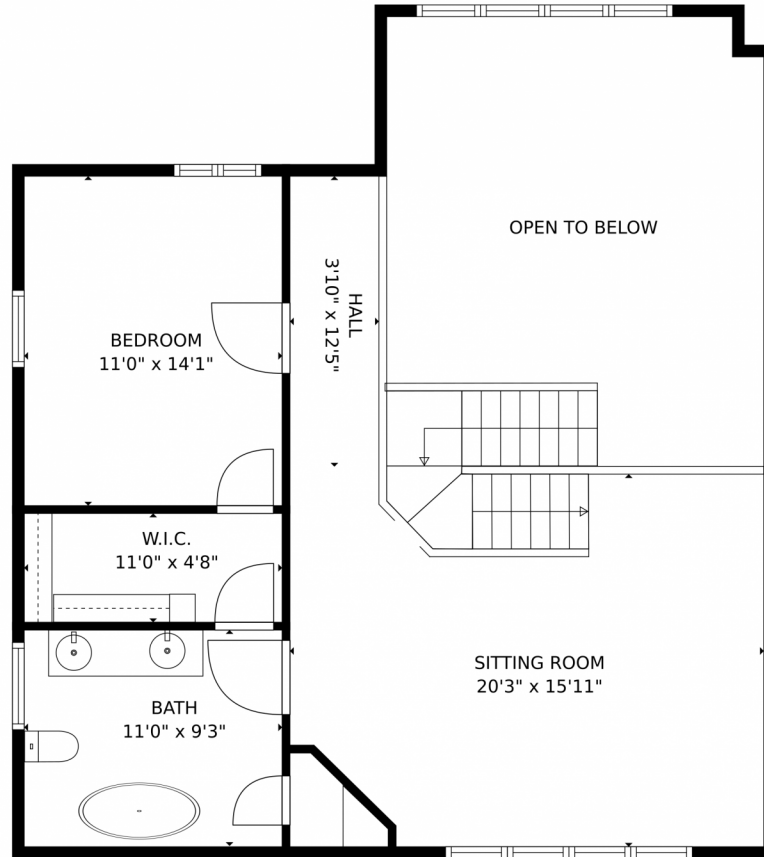
<http://www.SpiritBearRealty.com>



Scan code
for more
property
details



12386 Calfee Gulch Road, Conifer, CO 80433 — Upper Level



GROSS INTERNAL AREA
Below Ground: 797 sq. ft, FLOOR 2: 1458 sq. ft, FLOOR 3: 737 sq. ft
EXCLUDED AREAS: ELECTRICAL ROOM: 203 sq. ft, GARAGE: 642 sq. ft, DECK: 660 sq. ft,
OPEN TO BELOW: 275 sq. ft
TOTAL: 2992 sq. ft
MEASUREMENTS CALCULATED BY V1Photos.com ARE DEEMED HIGHLY RELIABLE BUT NOT GUARANTEED.



Disclaimer: Sizes and Dimensions are Approximate, Actual May Vary.



Trisha Karstetter & Elliot Pappas

720-934-4477

trisha@spiritbearrealty.com

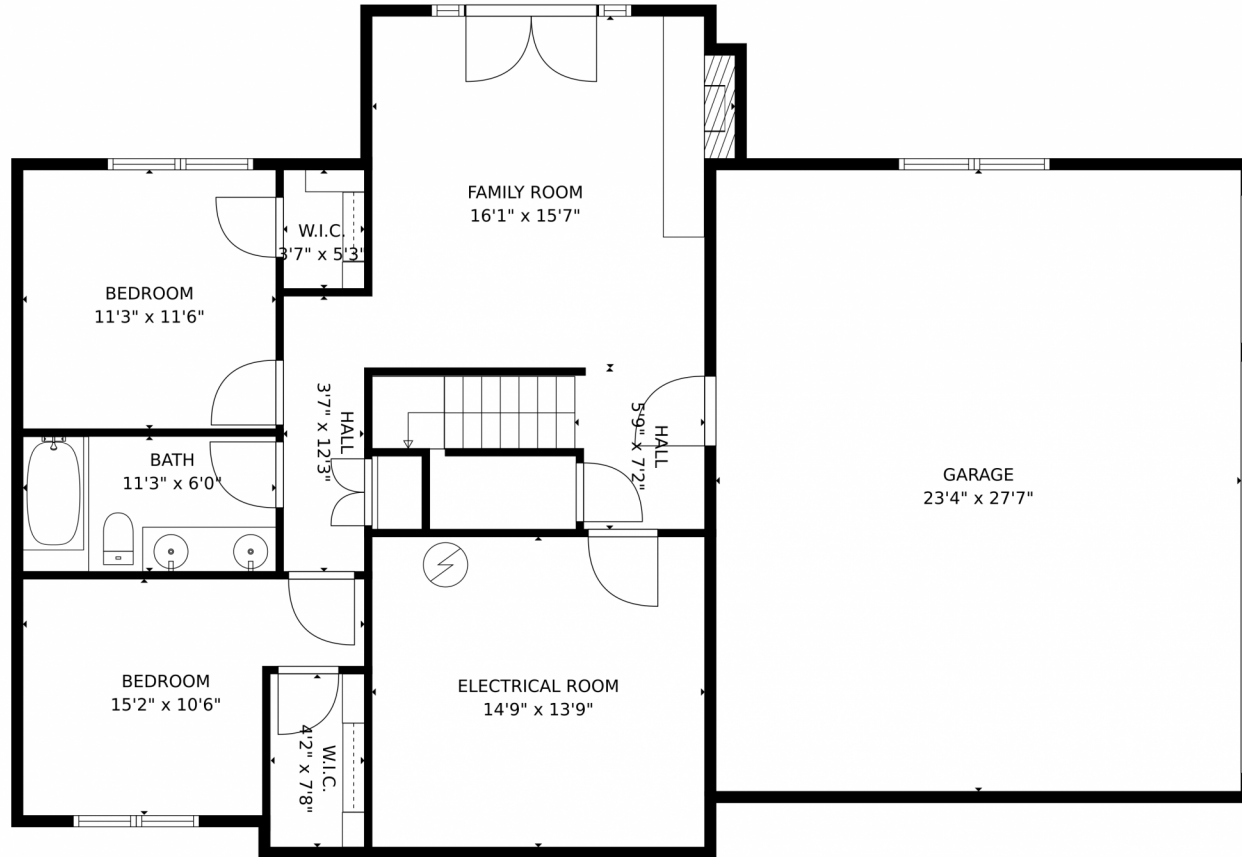
<http://www.SpiritBearRealty.com>



Scan code
for more
property
details



12386 Calfee Gulch Road, Conifer, CO 80433 – Lower Level



GROSS INTERNAL AREA
Below Ground: 797 sq. ft, FLOOR 2: 1458 sq. ft, FLOOR 3: 737 sq. ft
EXCLUDED AREAS: ELECTRICAL ROOM: 203 sq. ft, GARAGE: 642 sq. ft, DECK: 660 sq. ft.
OPEN TO BELOW: 275 sq. ft
TOTAL: 2992 sq. ft
MEASUREMENTS CALCULATED BY V1Photos.com ARE DEEMED HIGHLY RELIABLE BUT NOT GUARANTEED.



Disclaimer: Sizes and Dimensions are Approximate, Actual May Vary.



Trisha Karstetter & Elliot Pappas

720-934-4477

trisha@spiritbearrealty.com

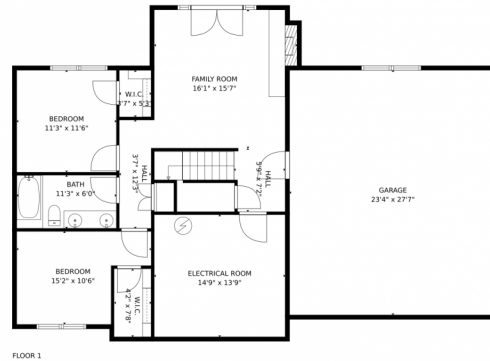
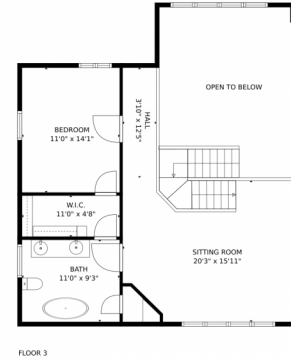
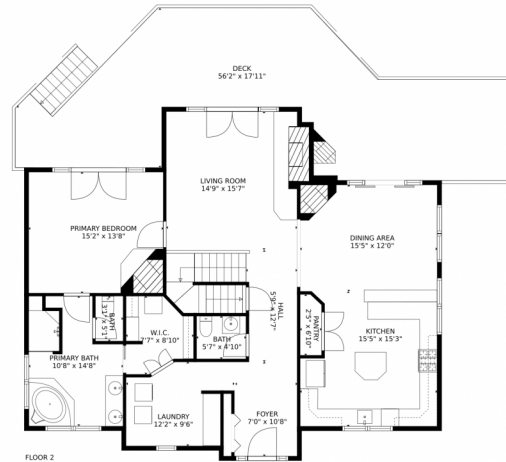
<http://www.SpiritBearRealty.com>



Scan code
for more
property
details



12386 Calfee Gulch Road, Conifer, CO 80433 — All Levels



GROSS INTERNAL AREA
Below Ground: 797 sq. ft, FLOOR 2: 1458 sq. ft, FLOOR 3: 737 sq. ft
EXCLUDED AREAS: ELECTRICAL ROOM: 203 sq. ft, GARAGE: 642 sq. ft, DECK: 660 sq. ft,
OPEN TO BELOW: 275 sq. ft
TOTAL: 2992 sq. ft
MEASUREMENTS CALCULATED BY V1Photos.com ARE DEEMED HIGHLY RELIABLE BUT NOT GUARANTEED.



Disclaimer: Sizes and Dimensions are Approximate, Actual May Vary.



Trisha Karstetter & Elliot Pappas

720-934-4477

trisha@spiritbearrealty.com

<http://www.SpiritBearRealty.com>



Scan code
for more
property
details

