



5483 South Prince Street
Littleton, CO 80120



Single Family



850 SQFT



2 Beds



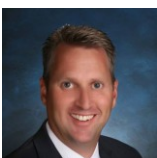
1 Baths



1 Car



0.16 Acre



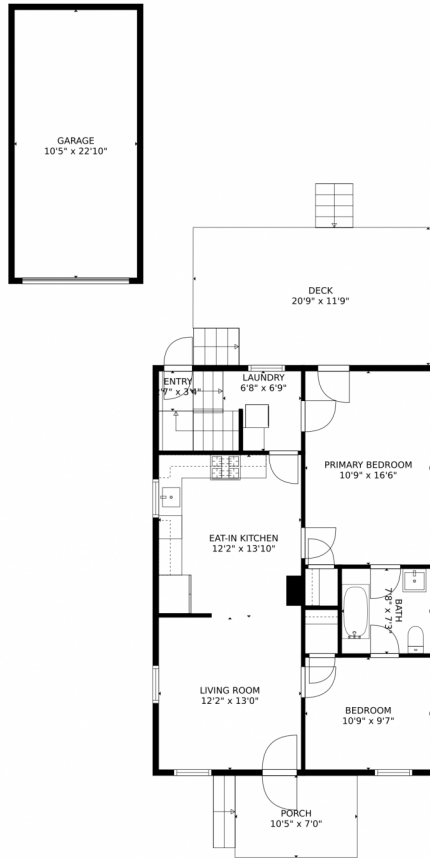
Greg Dach
303-525-9006
gregdach@remax.net



Scan code
for more
property
details

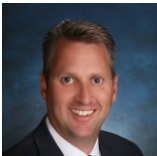


5483 South Prince Street, Littleton, CO 80120 – Main Level



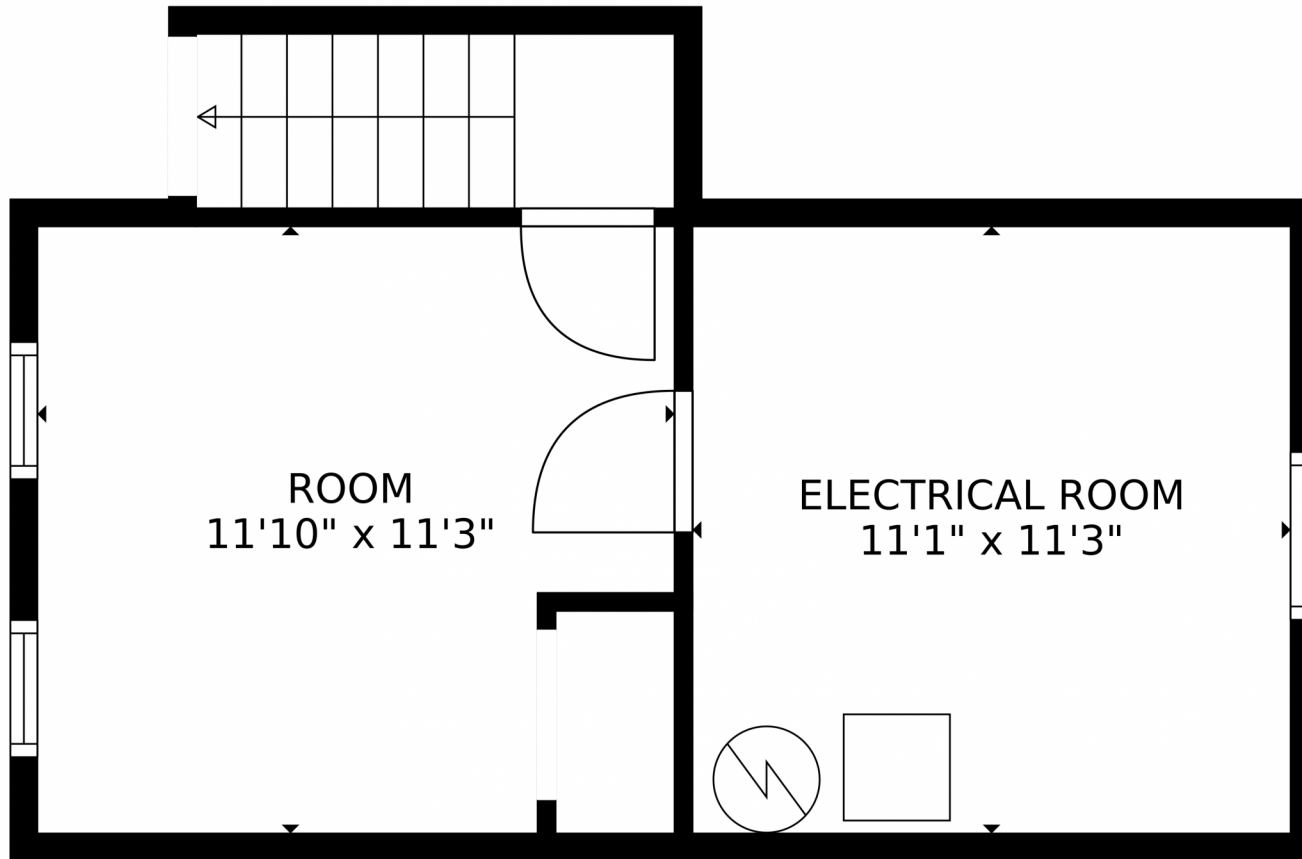
GROSS INTERNAL AREA
Below Ground: 0 sq. ft, FLOOR 2: 788 sq. ft
EXCLUDED AREAS: ROOM: 140 sq. ft, ELECTRICAL ROOM: 125 sq. ft, UNDEFINED: 29 sq. ft.
GARAGE: 238 sq. ft, DECK: 232 sq. ft, PORCH: 73 sq. ft
TOTAL: 788 sq. ft
MEASUREMENTS CALCULATED BY V1Photos.com ARE DEEMED HIGHLY RELIABLE BUT NOT GUARANTEED.

Disclaimer: Sizes and Dimensions are Approximate, Actual May Vary.



Greg Dach
303-525-9006
gregdach@remax.net





GROSS INTERNAL AREA
Below Ground: 0 sq. ft, FLOOR 2: 788 sq. ft
EXCLUDED AREAS: ROOM: 140 sq. ft, ELECTRICAL ROOM: 125 sq. ft, UNDEFINED: 29 sq. ft,
GARAGE: 238 sq. ft, DECK: 232 sq. ft, PORCH: 73 sq. ft
TOTAL: 788 sq. ft
MEASUREMENTS CALCULATED BY V1Photos.com ARE DEEMED HIGHLY RELIABLE BUT NOT GUARANTEED.



Disclaimer: Sizes and Dimensions are Approximate, Actual May Vary.



Greg Dach
303-525-9006
gregdach@remax.net



5483 South Prince Street, Littleton, CO 80120 – All Levels



GROSS INTERNAL AREA
Below Ground: 0 sq. ft, FLOOR 2: 788 sq. ft
EXCLUDED AREAS: ROOM: 140 sq. ft, ELECTRICAL ROOM: 125 sq. ft, UNDEFINED: 29 sq. ft,
GARAGE: 238 sq. ft, DECK: 232 sq. ft, PORCH: 73 sq. ft
TOTAL: 788 sq. ft
MEASUREMENTS CALCULATED BY V1Photos.com ARE DEEMED HIGHLY RELIABLE BUT NOT GUARANTEED.



Disclaimer: Sizes and Dimensions are Approximate, Actual May Vary.



Greg Dach
303-525-9006
gregdach@remax.net

