



16311 W Ellsworth Avenue  
Golden, CO 80401

COMMUNITY: Mesa View Estates

MLS # 8740304  
PRICE \$1,500,000



Single Family



4716 SQFT



5 Beds



5 Baths



3 Car



0.18 Acre

## PROPERTY DETAILS

This stunning home in Mesa View Estates offers over 4700 sq ft of living space, perfect for a large family or entertaining. It has 5 bedrooms and 5 bathrooms, providing plenty of privacy. The walkout basement has a fully equipped apartment with a kitchen, ideal for guests or extended family. The outdoor area includes a fire pit for gatherings. The home offers breathtaking city and mountain views from various rooms and outdoor spaces. It is conveniently located near shopping centers, transportation, and top-rated schools. With a wine cellar and an oversized 3-car garage, this home is a dream for those seeking comfort and style.



Julie Leins

720-474-0928

julieleins@kw.com

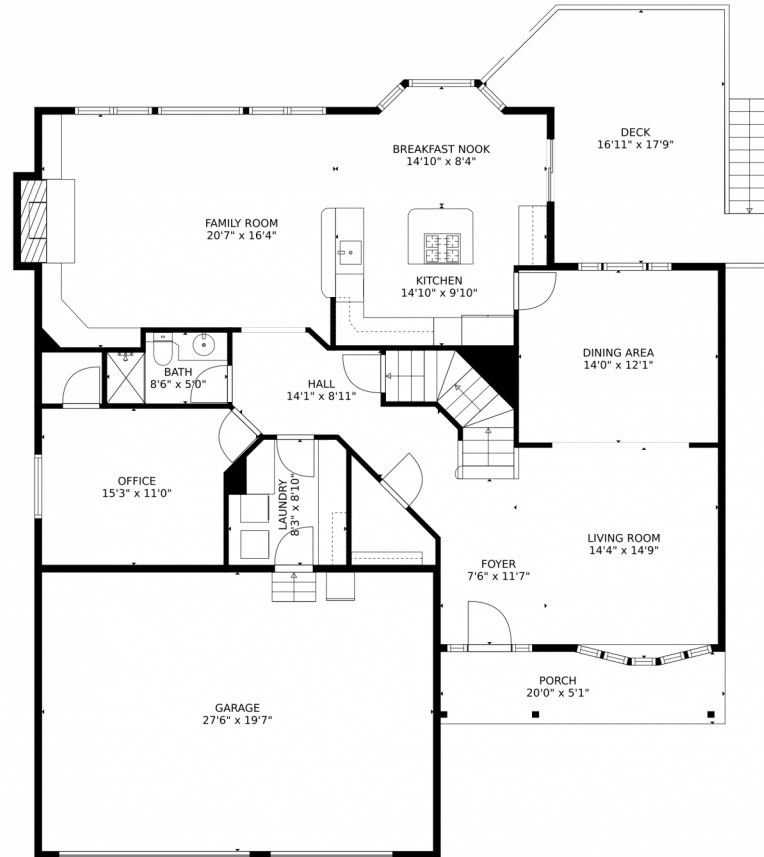
<https://coloradohomesdreamteam.com>



Scan code  
for more  
property  
details



# 16311 W Ellsworth Avenue, Golden, CO 80401 — Main Level



GROSS INTERNAL AREA  
Below Ground: 1017 sq. ft, FLOOR 2: 1502 sq. ft, FLOOR 3: 1444 sq. ft  
EXCLUDED AREAS: PATIO: 263 sq. ft, WINE CELLAR: 133 sq. ft, STORAGE: 298 sq. ft,  
GARAGE: 539 sq. ft, DECK: 243 sq. ft, PORCH: 96 sq. ft,  
FIREPLACE: 6 sq. ft, OPEN TO BELOW: 128 sq. ft  
TOTAL: 3963 sq. ft  
MEASUREMENTS CALCULATED BY V1Photos.COM ARE DEEMED HIGHLY RELIABLE BUT NOT GUARANTEED.



Disclaimer: Sizes and Dimensions are Approximate, Actual May Vary.



**Julie Leins**

720-474-0928

julieleins@kw.com

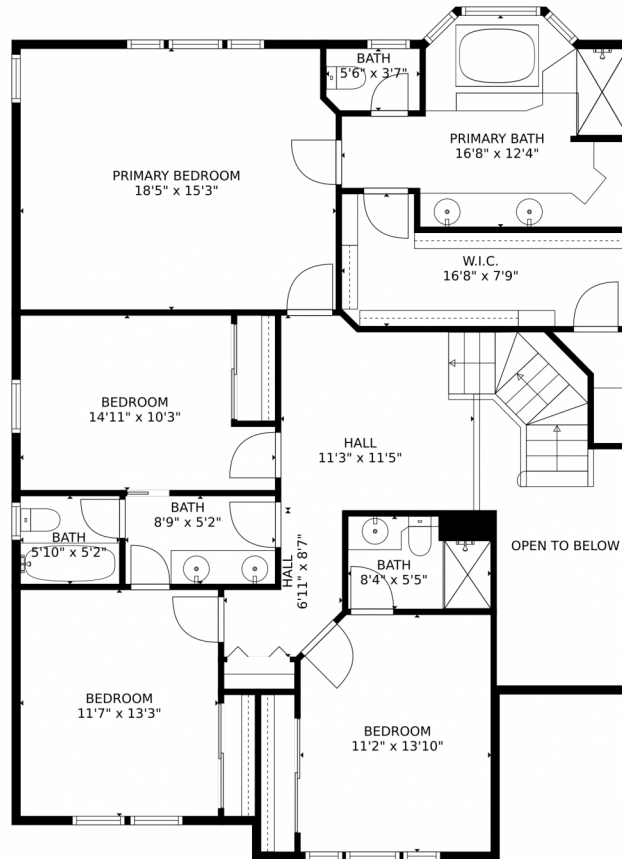
<https://coloradohomesdreamteam.com>



Scan code  
for more  
property  
details



# 16311 W Ellsworth Avenue, Golden, CO 80401 – Upper Level



GROSS INTERNAL AREA  
Below Ground: 1017 sq. ft, FLOOR 2: 1502 sq. ft, FLOOR 3: 1444 sq. ft  
EXCLUDED AREAS: PATIO: 263 sq. ft, WINE CELLAR: 133 sq. ft, STORAGE: 298 sq. ft,  
GARAGE: 539 sq. ft, DECK: 243 sq. ft, PORCH: 96 sq. ft,  
FIREPLACE: 6 sq. ft, OPEN TO BELOW: 128 sq. ft  
TOTAL: 3963 sq. ft  
MEASUREMENTS CALCULATED BY V1Photos.COM ARE DEEMED HIGHLY RELIABLE BUT NOT GUARANTEED.



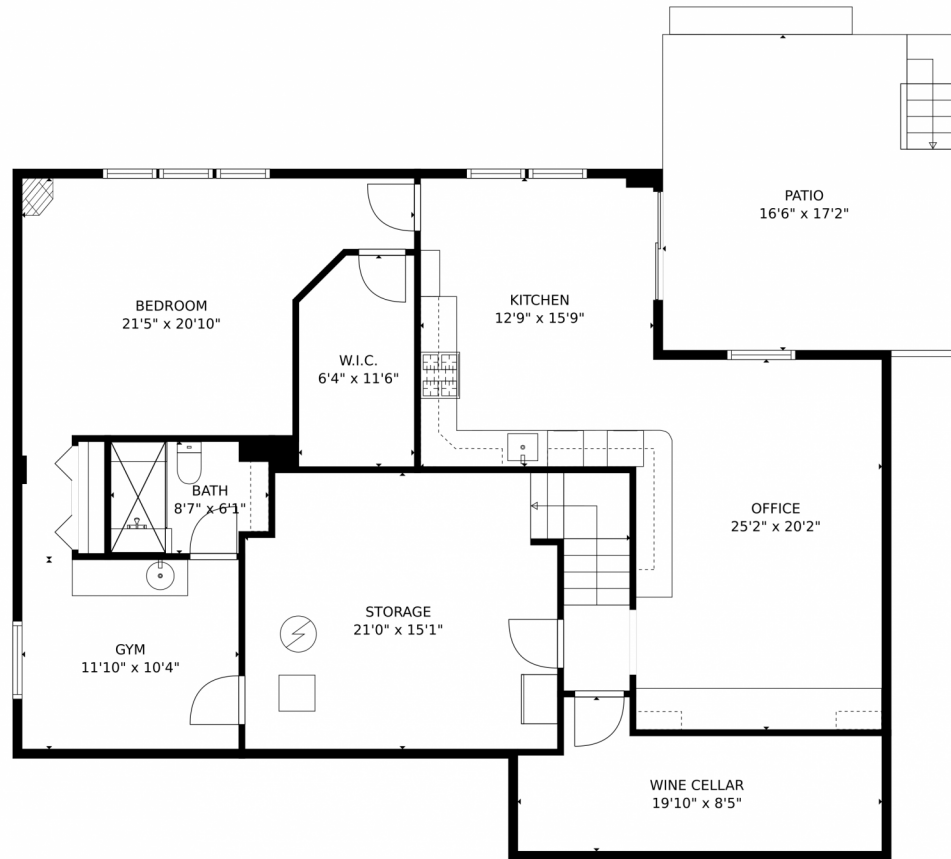
Disclaimer: Sizes and Dimensions are Approximate, Actual May Vary.



**Julie Leins**  
720-474-0928  
julieleins@kw.com  
<https://coloradohomesdreamteam.com>



# 16311 W Ellsworth Avenue, Golden, CO 80401 – Lower Level



GROSS INTERNAL AREA  
Below Ground: 1017 sq. ft, FLOOR 2: 1502 sq. ft, FLOOR 3: 1444 sq. ft  
EXCLUDED AREAS: PATIO: 263 sq. ft, WINE CELLAR: 133 sq. ft, STORAGE: 298 sq. ft,  
GARAGE: 539 sq. ft, DECK: 243 sq. ft, PORCH: 96 sq. ft,  
FIREPLACE: 6 sq. ft, OPEN TO BELOW: 128 sq. ft  
TOTAL: 3963 sq. ft  
MEASUREMENTS CALCULATED BY V1Photos.COM ARE DEEMED HIGHLY RELIABLE BUT NOT GUARANTEED.



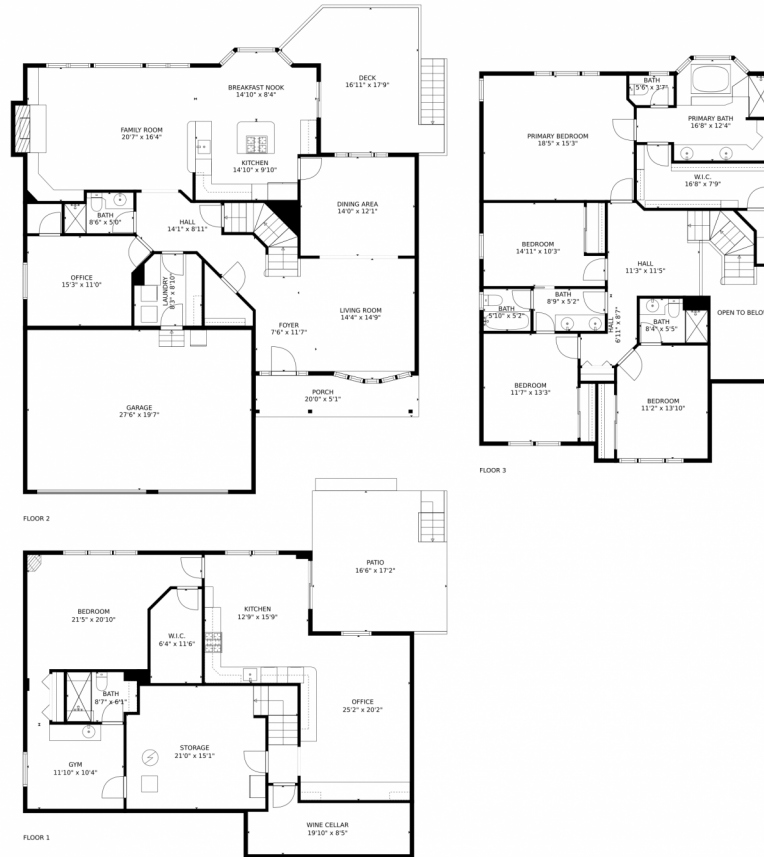
Disclaimer: Sizes and Dimensions are Approximate, Actual May Vary.



**Julie Leins**  
720-474-0928  
julieleins@kw.com  
<https://coloradohomesdreamteam.com>



# 16311 W Ellsworth Avenue, Golden, CO 80401 – All Levels



**GROSS INTERNAL AREA**  
Below Ground: 1017 sq. ft, FLOOR 2: 1502 sq. ft, FLOOR 3: 1444 sq. ft  
EXCLUDED AREAS: PATIO: 263 sq. ft, WINE CELLAR: 133 sq. ft, STORAGE: 298 sq. ft,  
GARAGE: 539 sq. ft, DECK: 243 sq. ft, PORCH: 96 sq. ft,  
FIREPLACE: 6 sq. ft, OPEN TO BELOW: 128 sq. ft  
TOTAL: 3963 sq. ft  
MEASUREMENTS CALCULATED BY V1Photos.COM ARE DEEMED HIGHLY RELIABLE BUT NOT GUARANTEED.



Disclaimer: Sizes and Dimensions are Approximate, Actual May Vary.



**Julie Leins**  
720-474-0928  
julieleins@kw.com  
<https://coloradohomesdreamteam.com>



Scan code  
for more  
property  
details

