



3598 Moore Court
 Wheat Ridge, CO 80033
COMMUNITY: Rolling Hills/Applewood Estates

MLS # IR996382
PRICE \$875,000



3598 Moore Court, Wheat Ridge, CO 80033 - Main Level



Single Family

3300 SQFT

4 Beds

3 Baths

2 Car

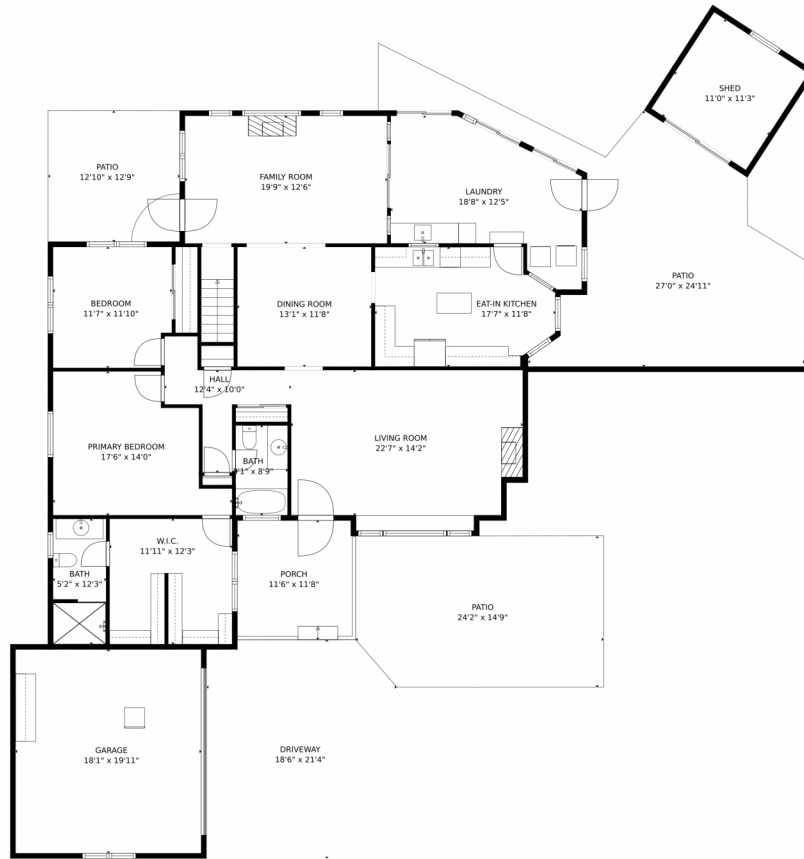
0.33 Acre



Maria Dellota
 970-215-1013
 mdellota@windermere.com



3598 Moore Court, Wheat Ridge, CO 80033 – Main Level



GROSS INTERNAL AREA
Below Ground: 1029 sq. ft, FLOOR 2: 1928 sq. ft
EXCLUDED AREAS: ELECTRICAL ROOM: 180 sq. ft, GARAGE: 360 sq. ft, SHED: 123 sq. ft,
PORCH: 134 sq. ft, PATIO: 1016 sq. ft, DRIVEWAY: 384 sq. ft
TOTAL: 2957 sq. ft
MEASUREMENTS CALCULATED BY V1Photos.com ARE DEEMED HIGHLY RELIABLE BUT NOT GUARANTEED.



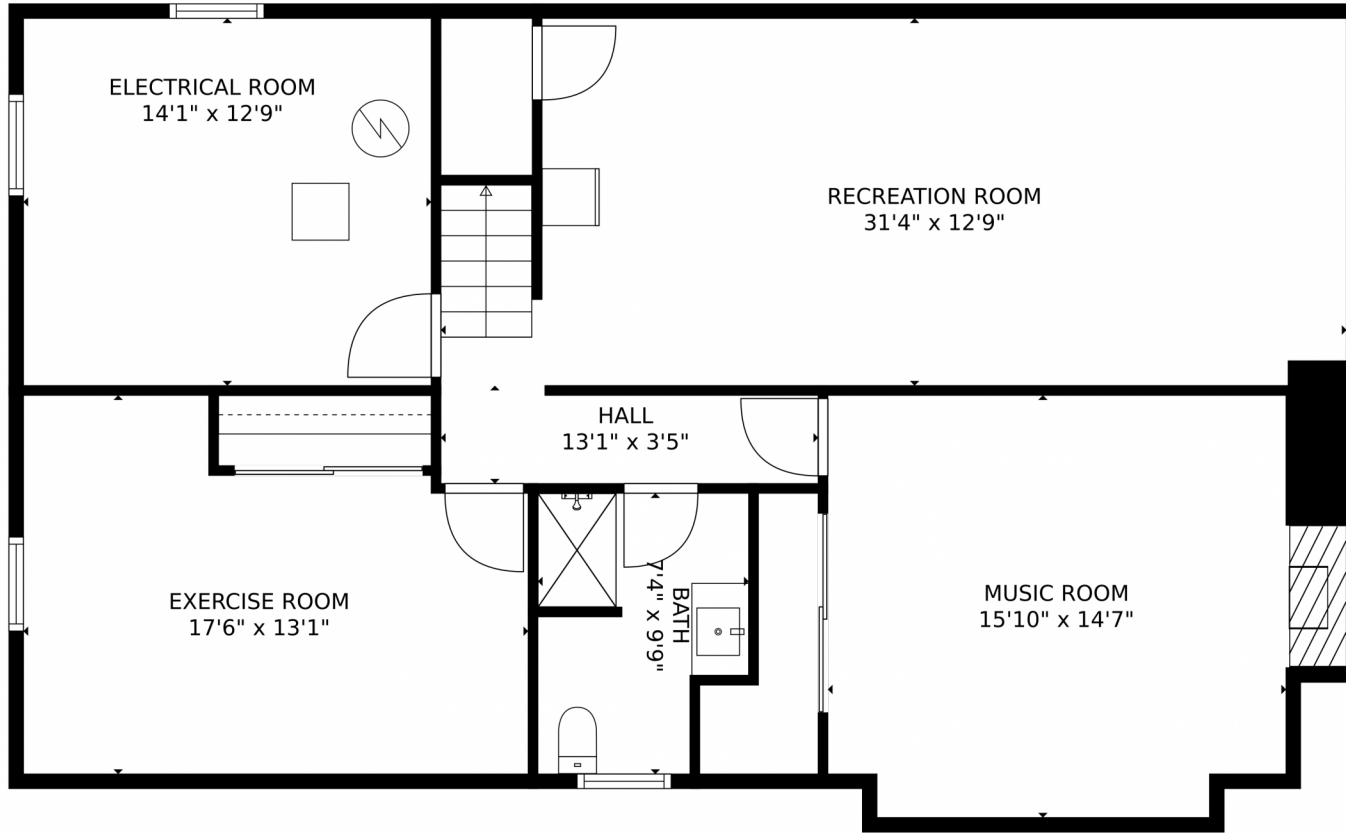
Disclaimer: Sizes and Dimensions are Approximate, Actual May Vary.



Maria Dellota
970-215-1013
mdellota@windermere.com



3598 Moore Court, Wheat Ridge, CO 80033 – Lower Level



GROSS INTERNAL AREA
Below Ground: 1029 sq. ft. FLOOR 2: 1928 sq. ft.
EXCLUDED AREAS: ELECTRICAL ROOM: 180 sq. ft, GARAGE: 360 sq. ft, SHED: 123 sq. ft.
PORCH: 134 sq. ft, PATIO: 1016 sq. ft, DRIVEWAY: 384 sq. ft.
TOTAL: 2957 sq. ft
MEASUREMENTS CALCULATED BY V1Photos.com ARE DEEMED HIGHLY RELIABLE BUT NOT GUARANTEED.



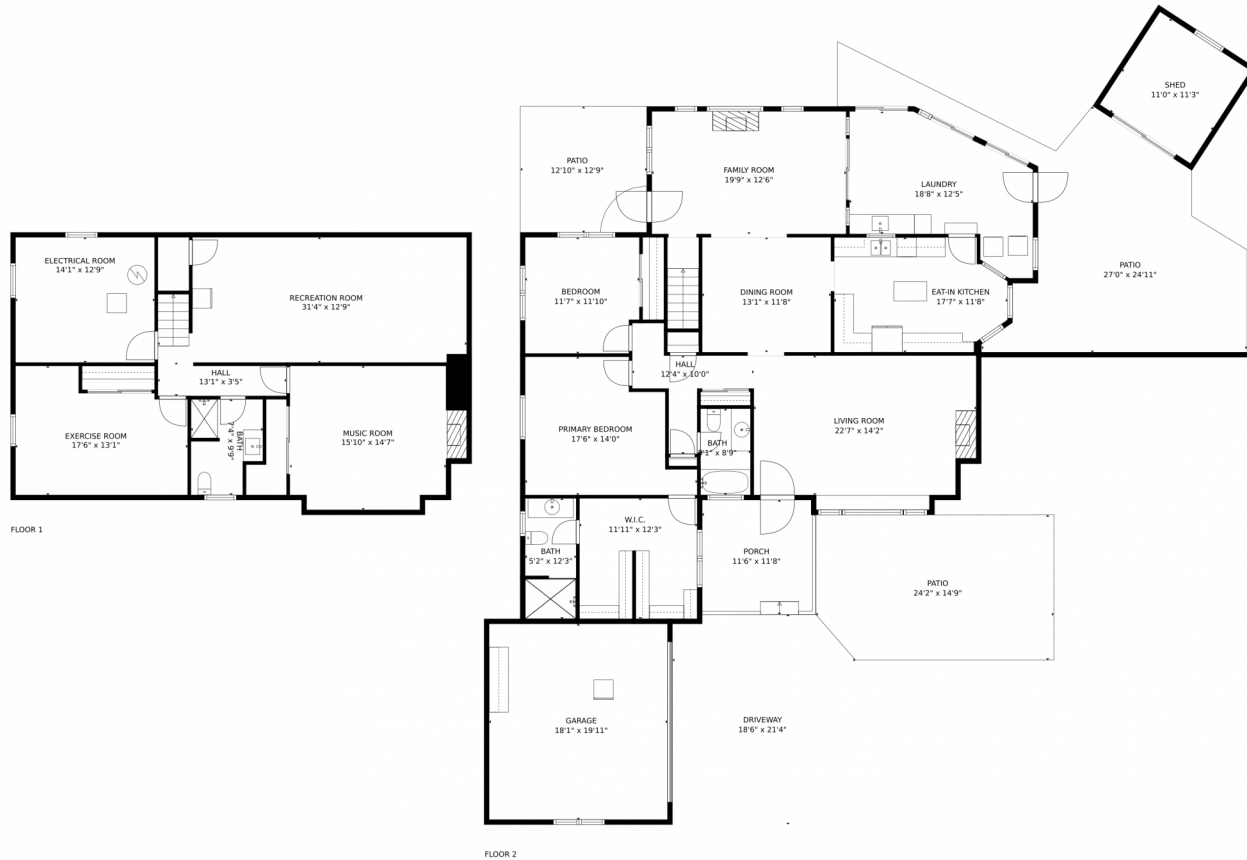
Disclaimer: Sizes and Dimensions are Approximate, Actual May Vary.



Maria Dellota
970-215-1013
mdellota@windermere.com



3598 Moore Court, Wheat Ridge, CO 80033 – All Levels



GROSS INTERNAL AREA
Below Ground: 1029 sq. ft, FLOOR 2: 1928 sq. ft
EXCLUDED AREAS: ELECTRICAL ROOM: 180 sq. ft, GARAGE: 360 sq. ft, SHED: 123 sq. ft,
PORCH: 134 sq. ft, PATIO: 1016 sq. ft, DRIVEWAY: 384 sq. ft
TOTAL: 2957 sq. ft
MEASUREMENTS CALCULATED BY V1Photos.com ARE DEEMED HIGHLY RELIABLE BUT NOT GUARANTEED.



Disclaimer: Sizes and Dimensions are Approximate, Actual May Vary.



Maria Dellota
970-215-1013
mdellota@windermere.com

