



18905 Birdseye View  
 Peyton, CO 80831  
 COMMUNITY: Peyton

MLS # 9381995  
 PRICE \$900,000



Single Family



2368 SQFT



3 Beds



2/1 Baths



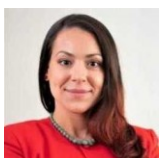
4 Car



35 Acre

## PROPERTY DETAILS

A true haven for those seeking serenity and nestled amidst tranquil pine ridges, this versatile property offers breathtaking views of the valley inside the historical Bijou Basin. Situated on a generous 35 acres, this property captures the essence of Colorado's outdoor splendor. Immerse yourself as you soak in open skies and beautiful sunsets, unobstructed views and wildlife of a valley that is mainly in a preserve and untouched by development. This custom built 3 bed 3 bath home seamlessly blends rustic and modern charm with a cozy fireplace and beautifully rich knotty alder doors and trim. There is plenty of carefully thought out storage with an oversized mudroom, large pantry in the kitchen and each spacious bedroom offering a walk-in closet with built in shelving. In addition to the modern conveniences, there are many historically unique features including antique maple wood floors from the Baltimore McCormick Spice Factory, and reclaimed tile roof from a church in Arizona. An open-concept layout creates a sense of spaciousness, while large windows frame the picturesque scenery, allowing an abundance of natural light to flood in. In the primary en suite bath, you will have a spa like experience with a clawfoot tub, warm Saltillo tile from Taos New Mexico, custom glass block windows from a South Park elementary school and antique bathroom fixtures from the early 1900's. This property offers ample space for family/caretaker living, guest



**Monique Santilli**  
 720-795-6562  
 monique.santilli@exprealty.com



Scan code  
 for more  
 property  
 details



accommodations, or a private office with an additional 1 bed/1bath home! With it's A-35 zoning, the opportunities are endless. Use the oversized garage for toys/vehicles or as a shop. Bring the horses, chickens and other animals while still having plenty of room for a greenhouse or garden! Enjoy private country living while still being so close to the modern amenities in Colorado Springs!

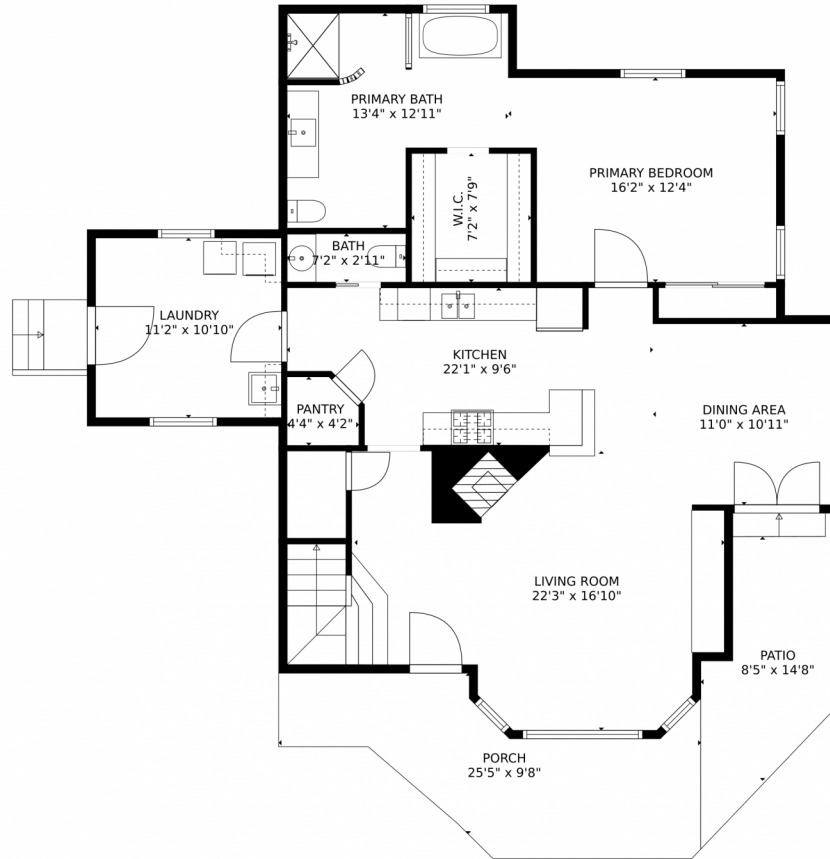
Visit website for video and additional photos!! <https://v1tours.com/listing/47674>



**Monique Santilli**  
720-795-6562  
[monique.santilli@exprealty.com](mailto:monique.santilli@exprealty.com)



# 18905 Birdseye View, Peyton, CO 80831 – Main Level



GROSS INTERNAL AREA  
Below Ground: 0 sq. ft, FLOOR 2: 710 sq. ft, FLOOR 3: 1273 sq. ft, FLOOR 4: 804 sq. ft, FLOOR 5: 0 sq. ft  
EXCLUDED AREAS: GARAGE: 1455 sq. ft, COVERED DECK: 175 sq. ft, DECK: 196 sq. ft,  
PATIO: 116 sq. ft, PORCH: 172 sq. ft, ELECTRICAL ROOM: 46 sq. ft,  
OPEN TO BELOW: 69 sq. ft, STABLE: 1391 sq. ft, ROOM: 113 sq. ft  
TOTAL: 2787 sq. ft  
MEASUREMENTS CALCULATED BY V1Photos.com ARE DEEMED HIGHLY RELIABLE BUT NOT GUARANTEED.



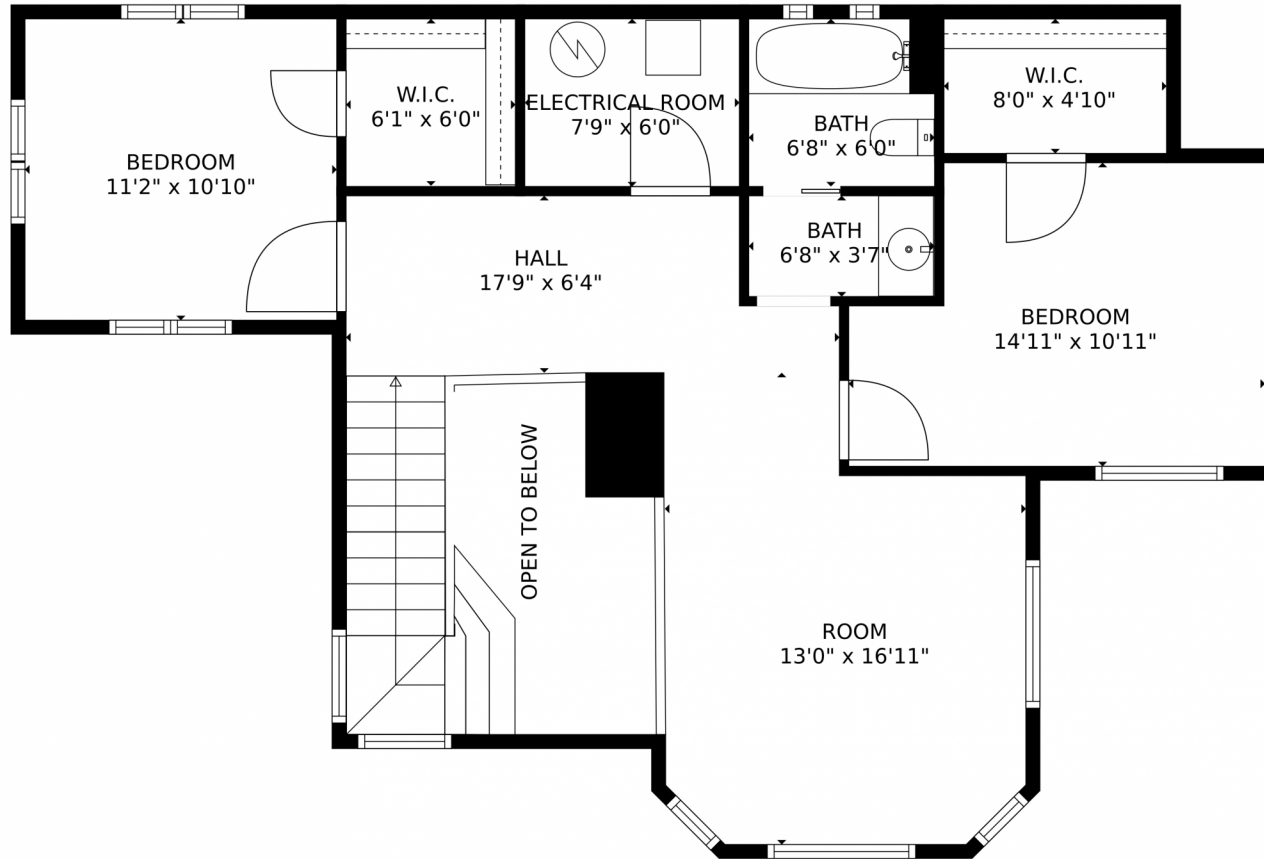
Disclaimer: Sizes and Dimensions are Approximate, Actual May Vary.



**Monique Santilli**  
720-795-6562  
monique.santilli@exprealty.com



18905 Birdseye View, Peyton, CO 80831 – 2nd Level



GROSS INTERNAL AREA  
Below Ground: 0 sq. ft, FLOOR 2: 710 sq. ft, FLOOR 3: 1273 sq. ft, FLOOR 4: 804 sq. ft, FLOOR 5: 0 sq. ft  
EXCLUDED AREAS: GARAGE: 1455 sq. ft, COVERED DECK: 175 sq. ft, DECK: 196 sq. ft,  
PATIO: 116 sq. ft, PORCH: 172 sq. ft, ELECTRICAL ROOM: 46 sq. ft,  
OPEN TO BELOW: 69 sq. ft, STABLE: 1391 sq. ft, ROOM: 113 sq. ft  
TOTAL: 2787 sq. ft  
MEASUREMENTS CALCULATED BY V1Photos.COM ARE DEEMED HIGHLY RELIABLE BUT NOT GUARANTEED.



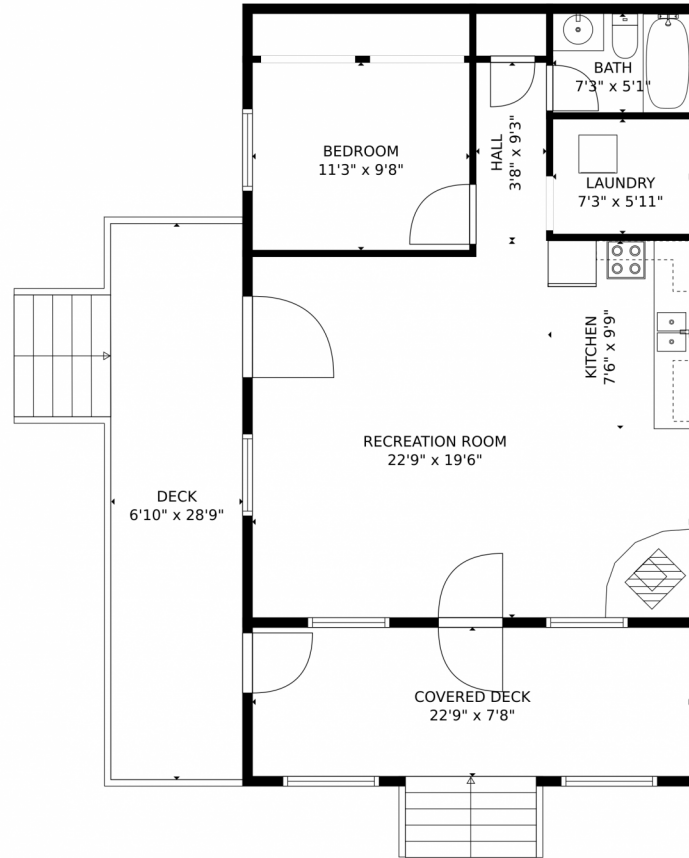
Disclaimer: Sizes and Dimensions are Approximate, Actual May Vary.



**Monique Santilli**  
720-795-6562  
monique.santilli@exprealty.com



# 18905 Birdseye View, Peyton, CO 80831 — Guest House



GROSS INTERNAL AREA  
Below Ground: 0 sq. ft, FLOOR 2: 710 sq. ft, FLOOR 3: 1273 sq. ft, FLOOR 4: 804 sq. ft, FLOOR 5: 0 sq. ft  
EXCLUDED AREAS: GARAGE: 1455 sq. ft, COVERED DECK: 175 sq. ft, DECK: 196 sq. ft,  
PATIO: 116 sq. ft, PORCH: 172 sq. ft, ELECTRICAL ROOM: 46 sq. ft,  
OPEN TO BELOW: 69 sq. ft, STABLE: 1391 sq. ft, ROOM: 113 sq. ft  
TOTAL: 2787 sq. ft  
MEASUREMENTS CALCULATED BY V1Photos.com ARE DEEMED HIGHLY RELIABLE BUT NOT GUARANTEED.



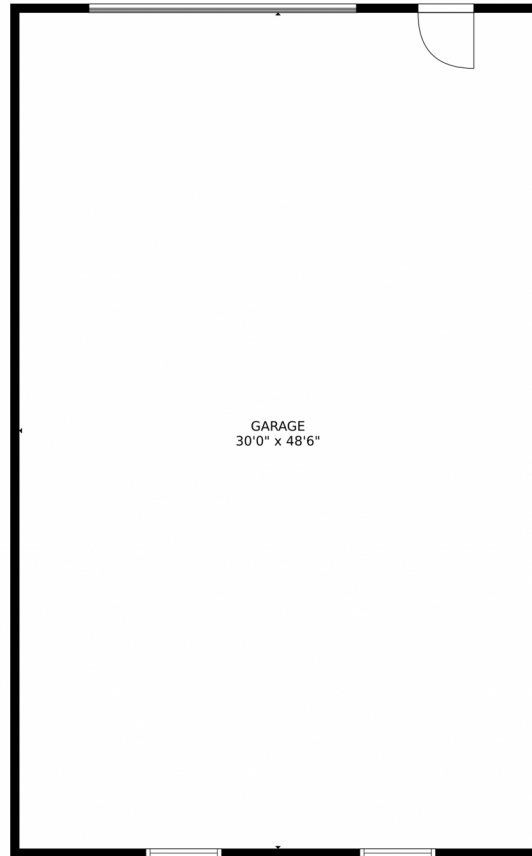
Disclaimer: Sizes and Dimensions are Approximate, Actual May Vary.



**Monique Santilli**  
720-795-6562  
monique.santilli@exprealty.com



18905 Birdseye View, Peyton, CO 80831 — Garage



GROSS INTERNAL AREA  
Below Ground: 0 sq. ft, FLOOR 2: 710 sq. ft, FLOOR 3: 1273 sq. ft, FLOOR 4: 804 sq. ft, FLOOR 5: 0 sq. ft  
EXCLUDED AREAS: GARAGE: 1455 sq. ft, COVERED DECK: 175 sq. ft, DECK: 196 sq. ft,  
PATIO: 116 sq. ft, PORCH: 172 sq. ft, ELECTRICAL ROOM: 46 sq. ft,  
OPEN TO BELOW: 69 sq. ft, STABLE: 1391 sq. ft, ROOM: 113 sq. ft  
TOTAL: 2787 sq. ft  
MEASUREMENTS CALCULATED BY V1Photos.com ARE DEEMED HIGHLY RELIABLE BUT NOT GUARANTEED.

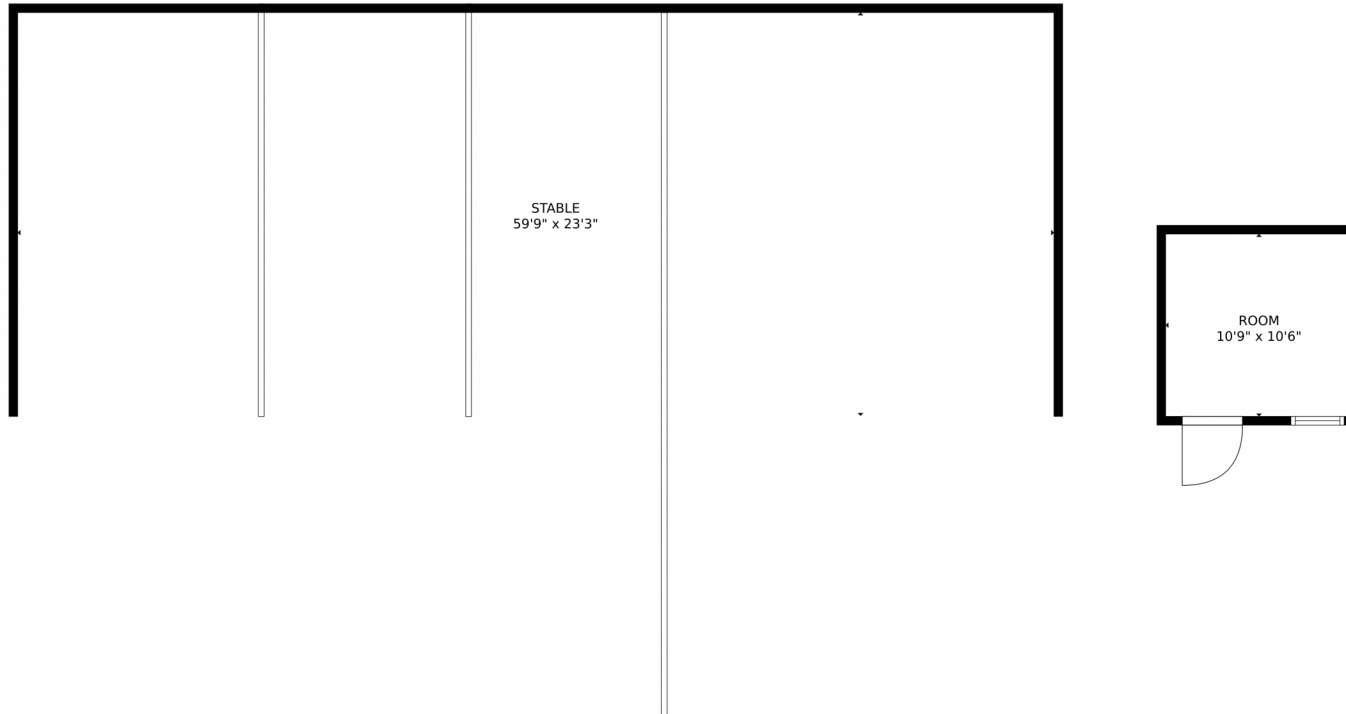


Disclaimer: Sizes and Dimensions are Approximate, Actual May Vary.



**Monique Santilli**  
720-795-6562  
monique.santilli@exprealty.com





GROSS INTERNAL AREA  
Below Ground: 0 sq. ft, FLOOR 2: 710 sq. ft, FLOOR 3: 1273 sq. ft, FLOOR 4: 804 sq. ft, FLOOR 5: 0 sq. ft  
EXCLUDED AREAS: GARAGE: 1455 sq. ft, COVERED DECK: 175 sq. ft, DECK: 196 sq. ft,  
PATIO: 116 sq. ft, PORCH: 172 sq. ft, ELECTRICAL ROOM: 46 sq. ft,  
OPEN TO BELOW: 69 sq. ft, STABLE: 1391 sq. ft, ROOM: 113 sq. ft  
TOTAL: 2787 sq. ft  
MEASUREMENTS CALCULATED BY V1Photos.com ARE DEEMED HIGHLY RELIABLE BUT NOT GUARANTEED.



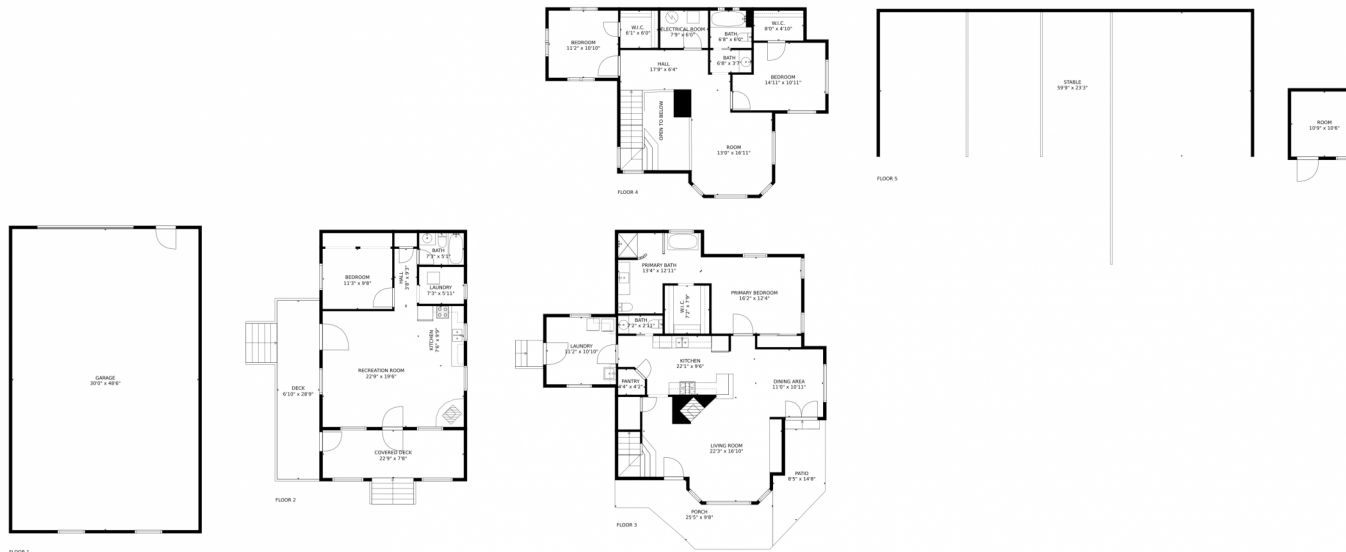
Disclaimer: Sizes and Dimensions are Approximate, Actual May Vary.



**Monique Santilli**  
720-795-6562  
monique.santilli@exprealty.com



# 18905 Birdseye View, Peyton, CO 80831 – All Levels



**GROSS INTERNAL AREA**  
 Below Ground: 0 sq. ft, FLOOR 2: 710 sq. ft, FLOOR 3: 1273 sq. ft, FLOOR 4: 804 sq. ft, FLOOR 5: 0 sq. ft  
**EXCLUDED AREAS:** GARAGE: 1455 sq. ft, COVERED DECK: 175 sq. ft, DECK: 196 sq. ft,  
 PATIO: 116 sq. ft, PORCH: 172 sq. ft, ELECTRICAL ROOM: 46 sq. ft,  
 OPEN TO BELOW: 69 sq. ft, STABLE: 1391 sq. ft, ROOM: 113 sq. ft  
**TOTAL: 2787 sq. ft**  
MEASUREMENTS CALCULATED BY V1Photos.com ARE DEEMED HIGHLY RELIABLE BUT NOT GUARANTEED.



Disclaimer: Sizes and Dimensions are Approximate, Actual May Vary.



**Monique Santilli**  
 720-795-6562  
 monique.santilli@exprealty.com



Scan code  
 for more  
 property  
 details

