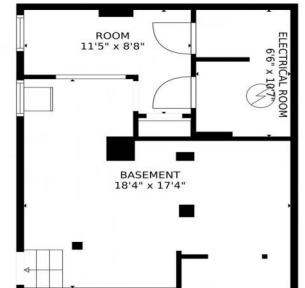




4155 Zenobia Street, Denver, CO 80212 - Lower Level



Single Family



3000 SQFT



5 Beds



2/2 Baths



2 Car



Joey Hoiescu
619-806-7014

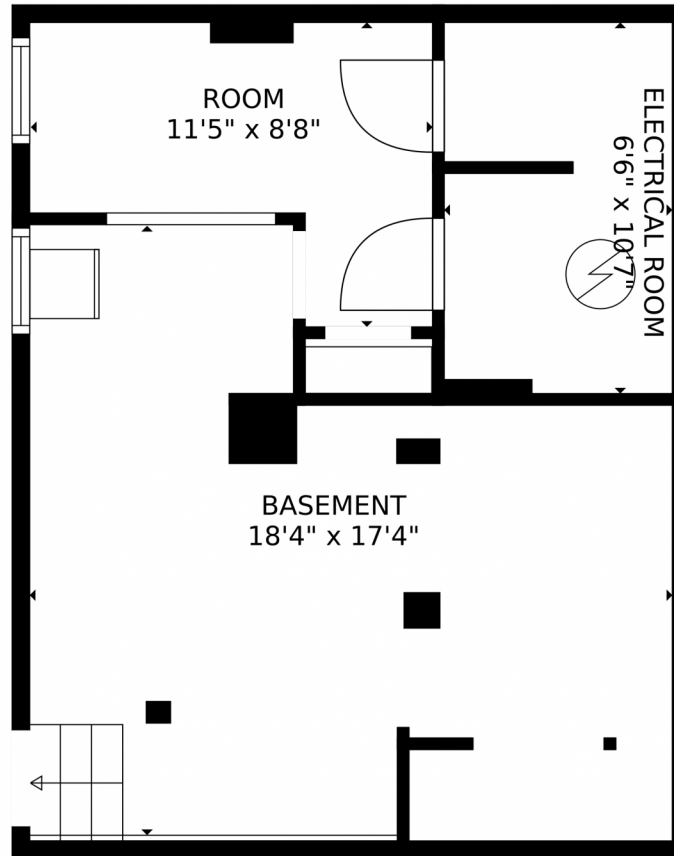
joey@luxdenver.com

<https://www.thepropertysomm.com>



Scan code
for more
property
details





GROSS INTERNAL AREA
Below Ground: 359 sq. ft, FLOOR 2: 1288 sq. ft, FLOOR 3: 951 sq. ft
EXCLUDED AREAS: ELECTRICAL ROOM: 69 sq. ft, GARAGE: 352 sq. ft, PATIO: 229 sq. ft,
PORCH: 71 sq. ft, FIREPLACE: 6 sq. ft, BALCONY: 110 sq. ft
TOTAL: 2598 sq. ft
MEASUREMENTS CALCULATED BY V1Photos.com ARE DEEMED HIGHLY RELIABLE BUT NOT GUARANTEED.



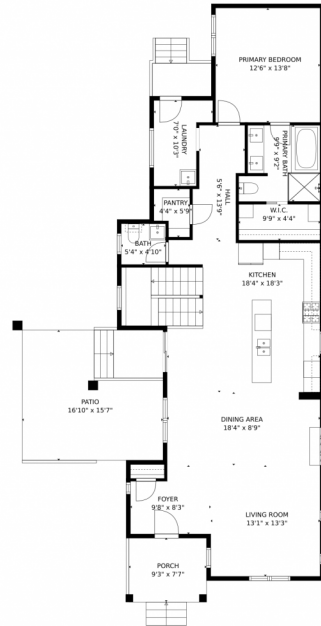
Disclaimer: Sizes and Dimensions are Approximate, Actual May Vary.



Joey Hoiescu
619-806-7014
joey@luxdenver.com
<https://www.thepropertysomm.com>



4155 Zenobia Street, Denver, CO 80212 – Main Level



GROSS INTERNAL AREA
Below Ground: 359 sq. ft, FLOOR 2: 1288 sq. ft, FLOOR 3: 951 sq. ft
EXCLUDED AREAS: ELECTRICAL ROOM: 69 sq. ft, GARAGE: 352 sq. ft, PATIO: 229 sq. ft,
PORCH: 71 sq. ft, FIREPLACE: 6 sq. ft, BALCONY: 110 sq. ft
TOTAL: 2598 sq. ft
MEASUREMENTS CALCULATED BY V1Photos.com ARE DEEMED HIGHLY RELIABLE BUT NOT GUARANTEED.



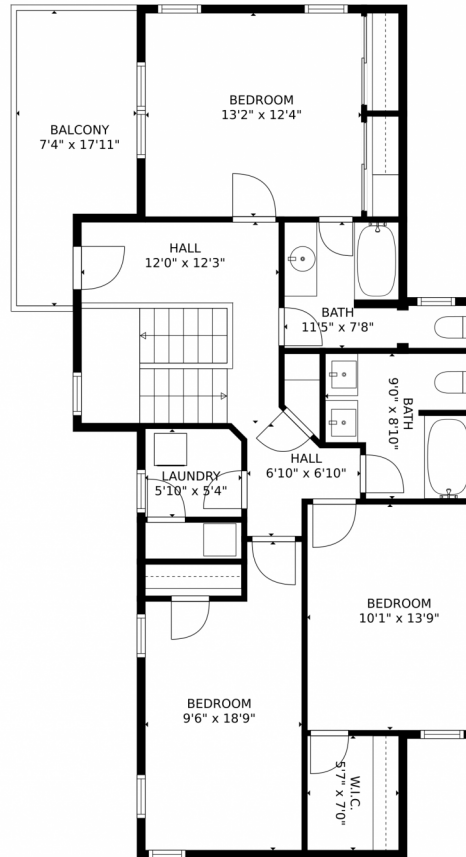
Disclaimer: Sizes and Dimensions are Approximate, Actual May Vary.



Joey Hoiescu
619-806-7014
joey@luxdenver.com
<https://www.thepertysomm.com>



4155 Zenobia Street, Denver, CO 80212 – Upper Level



GROSS INTERNAL AREA
Below Ground: 359 sq. ft, FLOOR 2: 1288 sq. ft, FLOOR 3: 951 sq. ft
EXCLUDED AREAS: ELECTRICAL ROOM: 69 sq. ft, GARAGE: 352 sq. ft, PATIO: 229 sq. ft,
PORCH: 71 sq. ft, FIREPLACE: 6 sq. ft, BALCONY: 110 sq. ft
TOTAL: 2598 sq. ft
MEASUREMENTS CALCULATED BY V1Photos.com ARE DEEMED HIGHLY RELIABLE BUT NOT GUARANTEED.



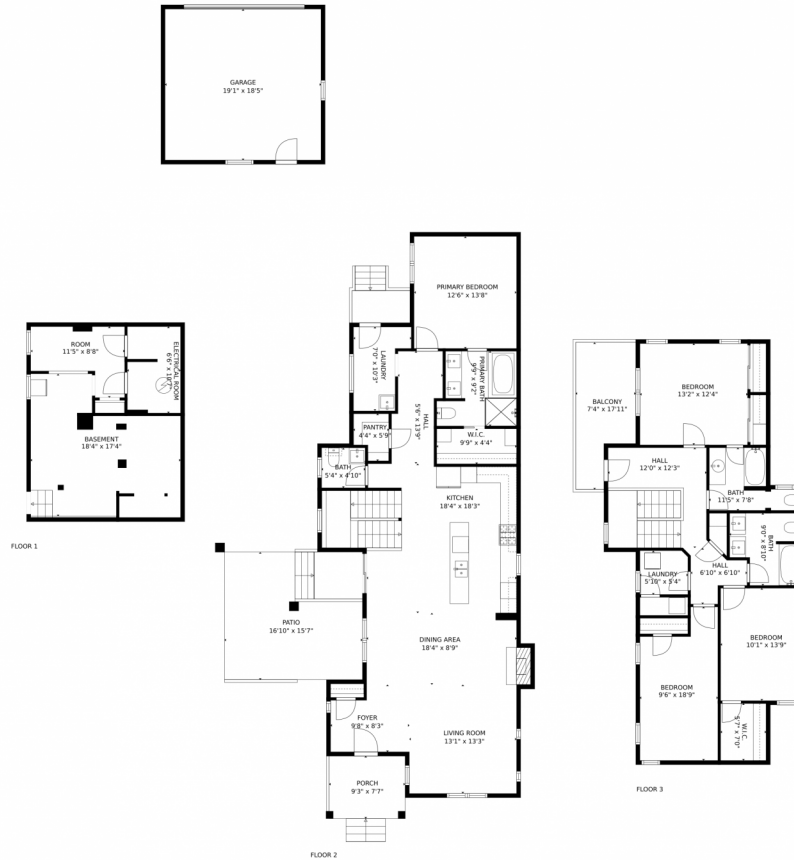
Disclaimer: Sizes and Dimensions are Approximate, Actual May Vary.



Joey Hoiescu
619-806-7014
joey@luxdenver.com
<https://www.thepropertysomm.com>



4155 Zenobia Street, Denver, CO 80212 – All Levels



GROSS INTERNAL AREA
Below Ground: 359 sq. ft, FLOOR 2: 1288 sq. ft, FLOOR 3: 951 sq. ft
EXCLUDED AREAS: ELECTRICAL ROOM: 69 sq. ft, GARAGE: 352 sq. ft, PATIO: 229 sq. ft,
PORCH: 71 sq. ft, FIREPLACE: 6 sq. ft, BALCONY: 110 sq. ft
TOTAL: 2598 sq. ft
MEASUREMENTS CALCULATED BY V1Photos.com ARE DEEMED HIGHLY RELIABLE BUT NOT GUARANTEED.



Disclaimer: Sizes and Dimensions are Approximate, Actual May Vary.



Joey Hoiescu
619-806-7014
joey@luxdenver.com
<https://www.thepropertysomm.com>

