

Single Family 1782 SQFT 3 Beds 2/1 Baths 4 Car 0.3 Acre

PROPERTY DETAILS

Introducing 45 Normandy Circle, a beautiful single-family home located in the Belmont community of Pueblo, CO. This well-maintained property offers 4 bedrooms, 2 full bathrooms, and 1 half bathroom, spanning across a spacious 1,728 square feet. With a cozy living room, a chef's dream kitchen, and a charming patio, this home is perfect for comfortable living and entertaining.

The bedrooms are spacious and inviting, featuring carpeted floors and ceiling fans for added comfort. The family room is a great space for relaxation and entertainment, with a brick wall, built-in shelves, a fireplace, and light hardwood flooring. The community of Belmont offers a friendly and welcoming atmosphere, with nearby amenities such as parks, schools, and shopping centers.

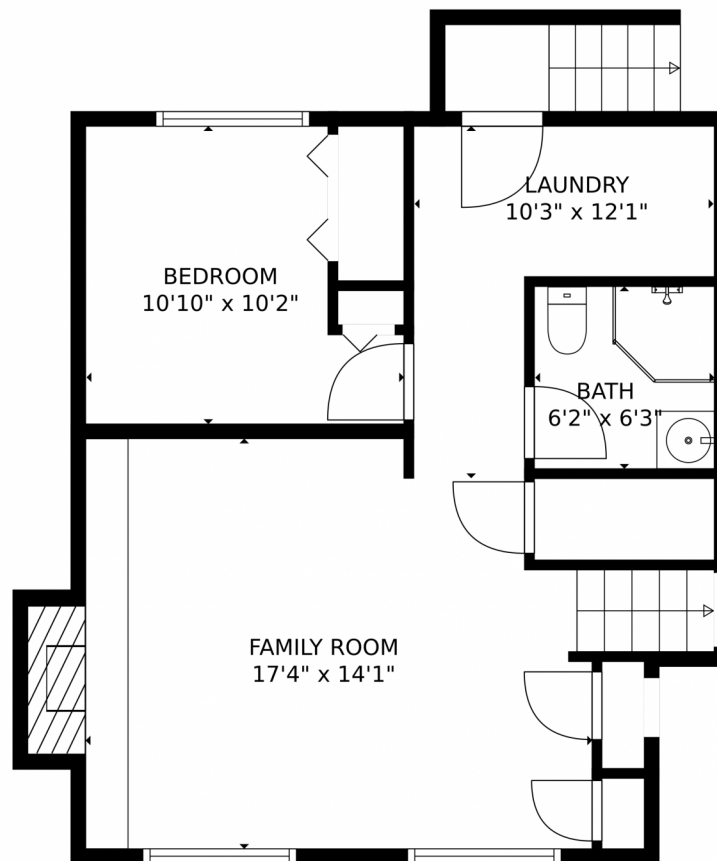
Don't miss the opportunity to make this exceptional property your new home. Contact us today to schedule a showing and experience the comfort and elegance of 45 Normandy Circle.



Natalie Renatti
720-568-0988
natalierenatti@kw.com
<https://natalierenatti.kw.com/>



45 Normandy Circle, Pueblo, CO 81001 — Lower Level



GROSS INTERNAL AREA
Below Ground: 519 sq. ft, FLOOR 2: 578 sq. ft, FLOOR 3: 574 sq. ft
EXCLUDED AREAS: FIREPLACE: 8 sq. ft, GARAGE: 469 sq. ft, PATIO: 574 sq. ft,
PORCH: 26 sq. ft
TOTAL: 1671 sq. ft
MEASUREMENTS CALCULATED BY V1Photos.com ARE DEEMED HIGHLY RELIABLE BUT NOT GUARANTEED.



Disclaimer: Sizes and Dimensions are Approximate, Actual May Vary.



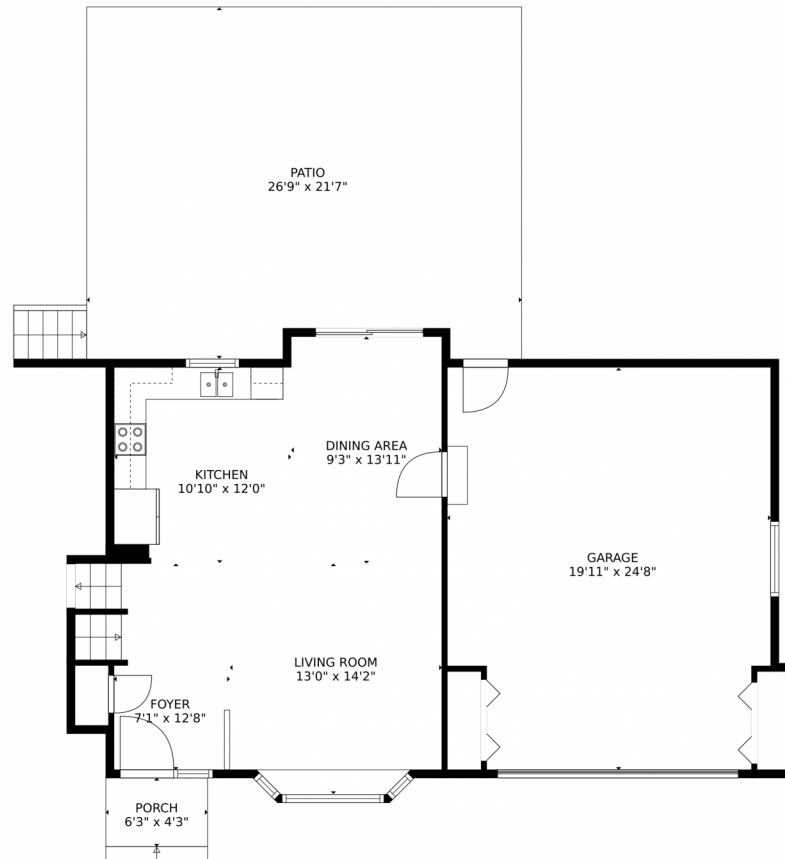
Natalie Renatti
720-568-0988
natalierenatti@kw.com
<https://natalierenatti.kw.com/>



Scan code
for more
property
details



45 Normandy Circle, Pueblo, CO 81001 — Main Level



GROSS INTERNAL AREA
Below Ground: 519 sq. ft, FLOOR 2: 578 sq. ft, FLOOR 3: 574 sq. ft
EXCLUDED AREAS: FIREPLACE: 8 sq. ft, GARAGE: 469 sq. ft, PATIO: 574 sq. ft,
PORCH: 26 sq. ft
TOTAL: 1671 sq. ft
MEASUREMENTS CALCULATED BY V1Photos.com ARE DEEMED HIGHLY RELIABLE BUT NOT GUARANTEED.



Disclaimer: Sizes and Dimensions are Approximate, Actual May Vary.



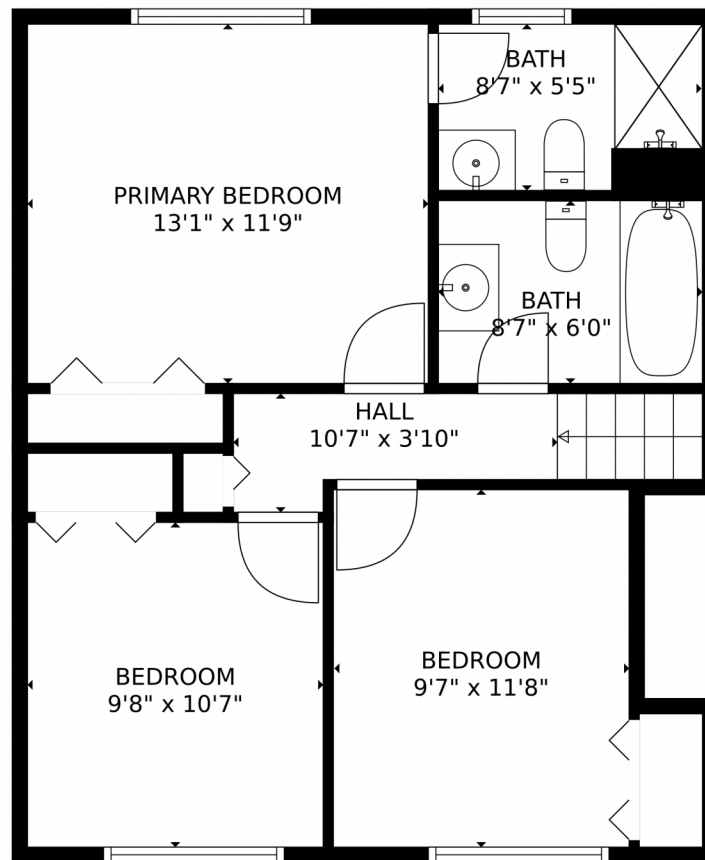
Natalie Renatti
720-568-0988
natalierenatti@kw.com
<https://natalierenatti.kw.com/>



Scan code
for more
property
details



45 Normandy Circle, Pueblo, CO 81001 — Upper Level



GROSS INTERNAL AREA
Below Ground: 519 sq. ft, FLOOR 2: 578 sq. ft, FLOOR 3: 574 sq. ft
EXCLUDED AREAS: FIREPLACE: 8 sq. ft, GARAGE: 469 sq. ft, PATIO: 574 sq. ft,
PORCH: 26 sq. ft
TOTAL: 1671 sq. ft
MEASUREMENTS CALCULATED BY V1Photos.com ARE DEEMED HIGHLY RELIABLE BUT NOT GUARANTEED.



Disclaimer: Sizes and Dimensions are Approximate, Actual May Vary.



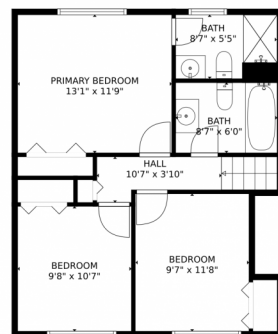
Natalie Renatti
720-568-0988
natalierenatti@kw.com
<https://natalierenatti.kw.com/>



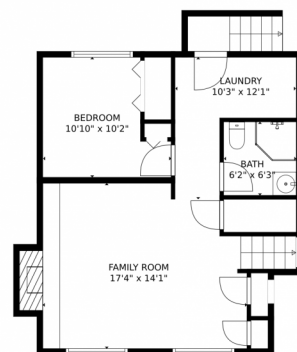
Scan code
for more
property
details



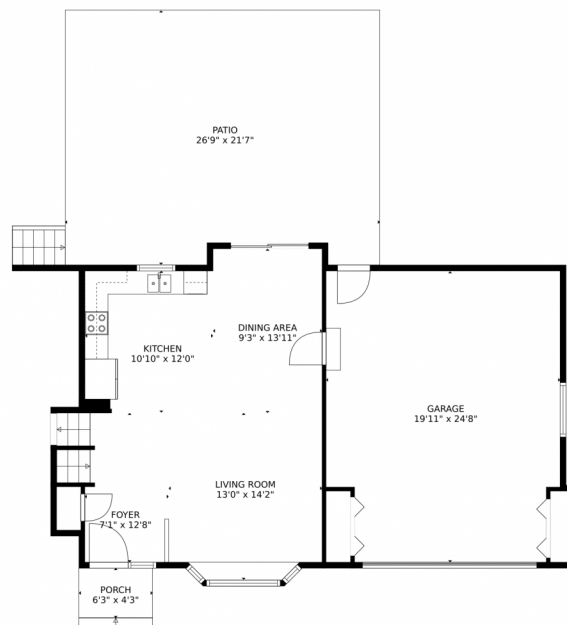
45 Normandy Circle, Pueblo, CO 81001 — All Levels



FLOOR 3



FLOOR 1



FLOOR 2

GROSS INTERNAL AREA
Below Ground: 519 sq. ft, FLOOR 2: 578 sq. ft, FLOOR 3: 574 sq. ft
EXCLUDED AREAS: FIREPLACE: 8 sq. ft, GARAGE: 469 sq. ft, PATIO: 574 sq. ft,
PORCH: 26 sq. ft
TOTAL: 1671 sq. ft
MEASUREMENTS CALCULATED BY V1Photos.COM ARE DEEMED HIGHLY RELIABLE BUT NOT GUARANTEED.



Disclaimer: Sizes and Dimensions are Approximate, Actual May Vary.



Natalie Renatti
720-568-0988
natalierenatti@kw.com
<https://natalierenatti.kw.com/>



Scan code
for more
property
details

