




 Single Family
  6005 SQFT
  5 Beds
  4/2 Baths
  3 Car
  3.26 Acre

## PROPERTY DETAILS

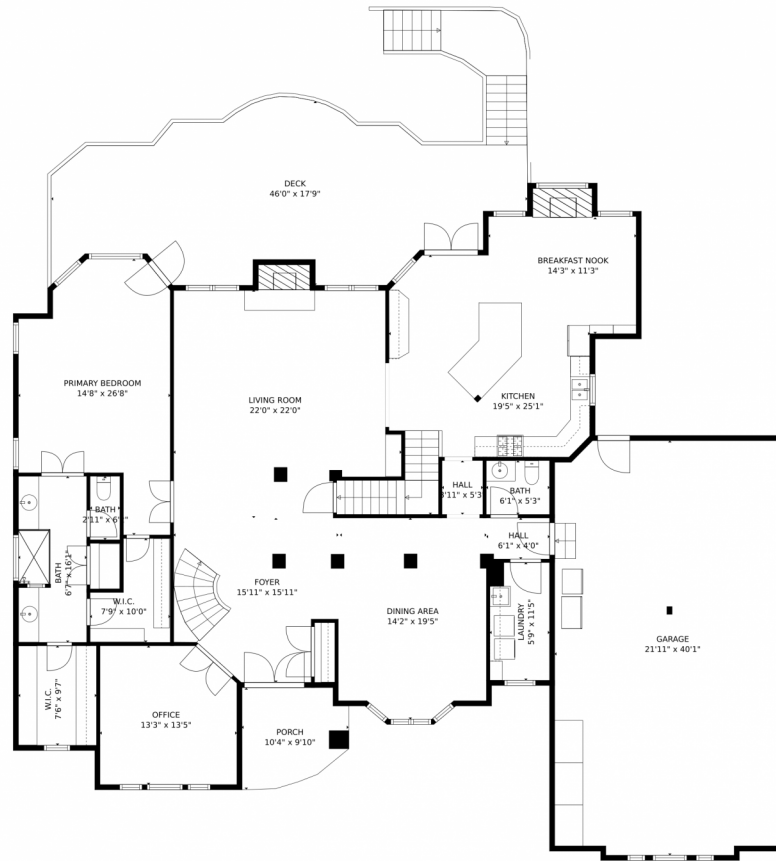
Experience this incredible Evergreen home at 6826 Timbers Drive. This 5-bed, 6-bath home with over 6,000sf offers unparalleled privacy and tranquility. The exterior features a large custom deck, outdoor fireplace, gardens, wildlife, water feature, hot tub, and outdoor kitchen. Step inside to discover vaulted ceilings, a main floor primary with ensuite bath, a chef's kitchen, and a cozy great room with a fireplace. Upstairs, there are 3 bedrooms with ensuite bathrooms. The lower level has a rec room, kitchenette, bedroom with ensuite bath, and wine cellar. The home is eco-friendly with solar panels and a water filtration system. It also has a heated 3-car garage. Don't miss the opportunity to own this exquisite property!



**Jenna McMenaman**  
 303-912-0338  
 jenna@madisonprops.com



# 6826 Timbers Drive, Evergreen, CO 80439 – Main Level



GROSS INTERNAL AREA  
Below Ground: 1867 sq. ft, FLOOR 2: 3264 sq. ft, FLOOR 3: 1080 sq. ft  
EXCLUDED AREAS: STORAGE: 404 sq. ft, WINE CELLAR: 47 sq. ft, PATIO: 847 sq. ft,  
DECK: 1403 sq. ft, FIREPLACE: 25 sq. ft, PORCH: 88 sq. ft,  
OPEN TO BELOW: 272 sq. ft, BALCONY: 29 sq. ft  
TOTAL: 6211 sq. ft  
MEASUREMENTS CALCULATED BY V1Photos.COM ARE DEEMED HIGHLY RELIABLE BUT NOT GUARANTEED.



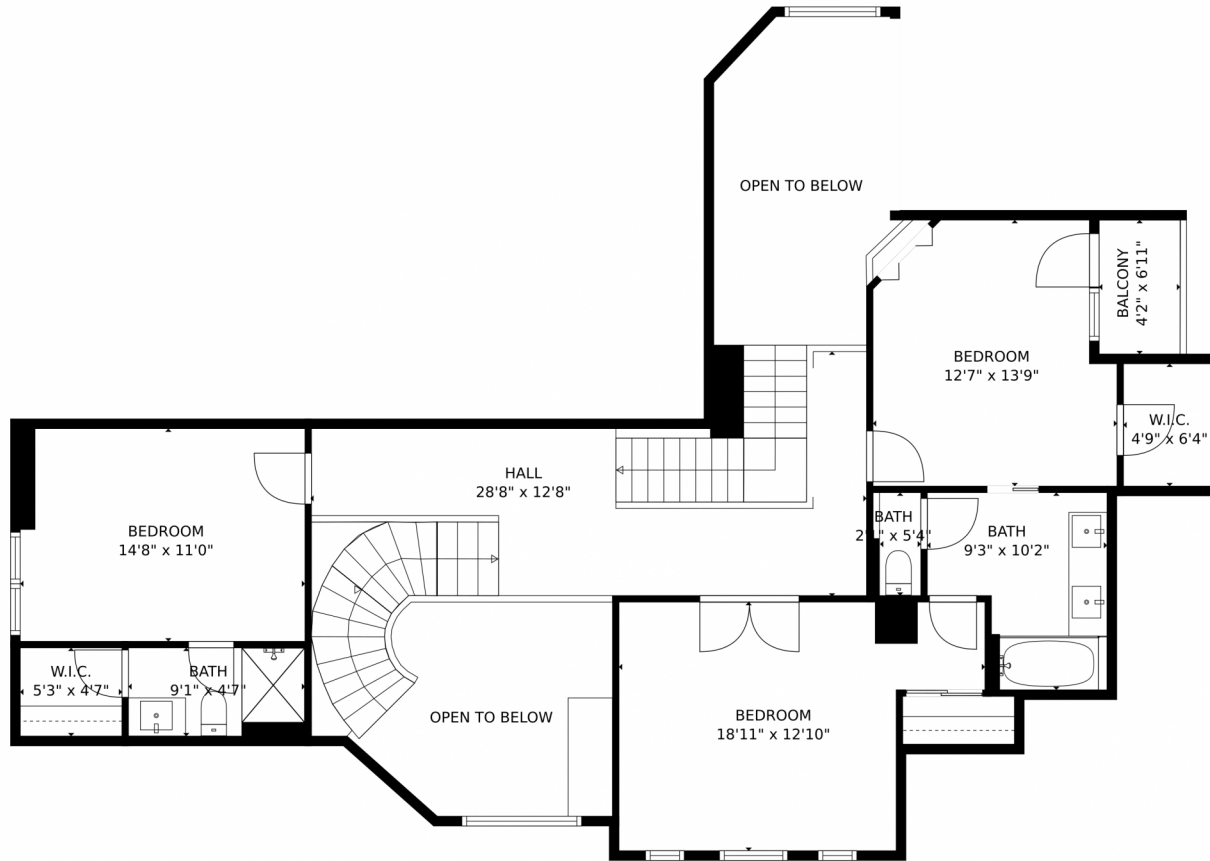
Disclaimer: Sizes and Dimensions are Approximate, Actual May Vary.



**Jenna McMenaman**  
303-912-0338  
jenna@madisonprops.com



# 6826 Timbers Drive, Evergreen, CO 80439 – Upper Level



GROSS INTERNAL AREA  
Below Ground: 1867 sq. ft, FLOOR 2: 3264 sq. ft, FLOOR 3: 1080 sq. ft  
EXCLUDED AREAS: STORAGE: 404 sq. ft, WINE CELLAR: 47 sq. ft, PATIO: 847 sq. ft,  
DECK: 1403 sq. ft, FIREPLACE: 25 sq. ft, PORCH: 88 sq. ft,  
OPEN TO BELOW: 272 sq. ft, BALCONY: 29 sq. ft  
TOTAL: 6211 sq. ft  
MEASUREMENTS CALCULATED BY V1Photos.com ARE DEEMED HIGHLY RELIABLE BUT NOT GUARANTEED.



Disclaimer: Sizes and Dimensions are Approximate, Actual May Vary.



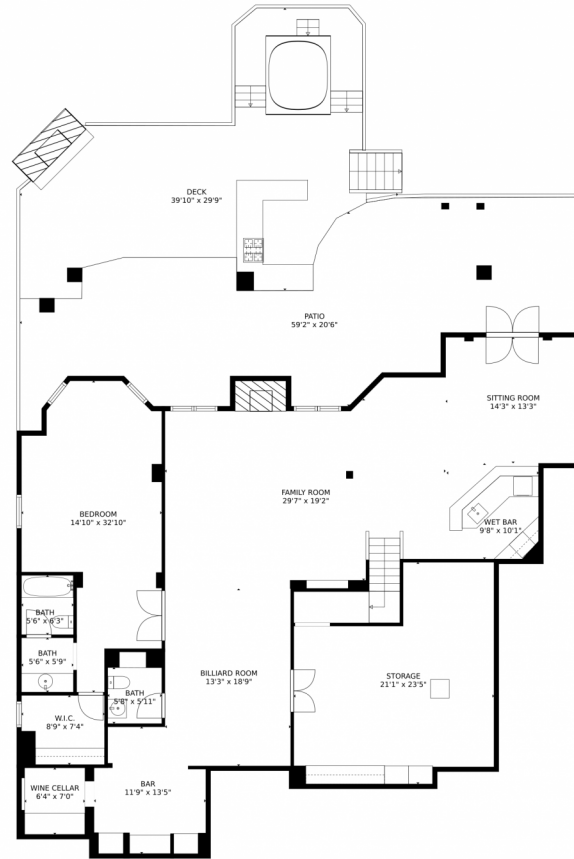
**Jenna McMenaman**  
303-912-0338  
jenna@madisonprops.com



Scan code for more property details



# 6826 Timbers Drive, Evergreen, CO 80439 – Lower Level



GROSS INTERNAL AREA  
Below Ground: 1867 sq. ft, FLOOR 2: 3264 sq. ft, FLOOR 3: 1080 sq. ft  
EXCLUDED AREAS: STORAGE: 404 sq. ft, WINE CELLAR: 47 sq. ft, PATIO: 847 sq. ft,  
DECK: 1403 sq. ft, FIREPLACE: 25 sq. ft, PORCH: 88 sq. ft,  
OPEN TO BELOW: 272 sq. ft, BALCONY: 29 sq. ft  
TOTAL: 6211 sq. ft  
MEASUREMENTS CALCULATED BY V1Photos.com ARE DEEMED HIGHLY RELIABLE BUT NOT GUARANTEED.



Disclaimer: Sizes and Dimensions are Approximate, Actual May Vary.



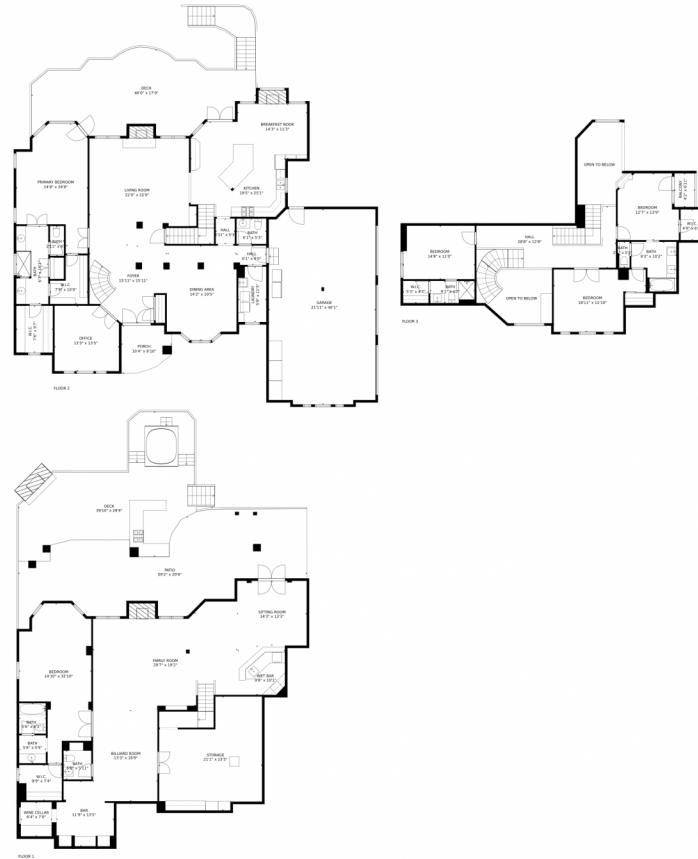
**Jenna McMenaman**  
303-912-0338  
jenna@madisonprops.com



Scan code  
for more  
property  
details



# 6826 Timbers Drive, Evergreen, CO 80439 – All Levels



GROSS INTERNAL AREA  
Below Ground: 1867 sq. ft, FLOOR 2: 3264 sq. ft, FLOOR 3: 1080 sq. ft  
EXCLUDED AREAS: STORAGE: 404 sq. ft, WINE CELLAR: 47 sq. ft, PATIO: 847 sq. ft,  
DECK: 1403 sq. ft, FIREPLACE: 25 sq. ft, PORCH: 88 sq. ft,  
OPEN TO BELOW: 272 sq. ft, BALCONY: 29 sq. ft  
TOTAL: 6211 sq. ft  
MEASUREMENTS CALCULATED BY V1Photos.com ARE DEEMED HIGHLY RELIABLE BUT NOT GUARANTEED.



Disclaimer: Sizes and Dimensions are Approximate, Actual May Vary.



**Jenna McMenaman**  
303-912-0338  
jenna@madisonprops.com



Scan code  
for more  
property  
details

