





 Multi Family

 1692 SQFT

 3 Beds

 2/1 Baths

 2 Car

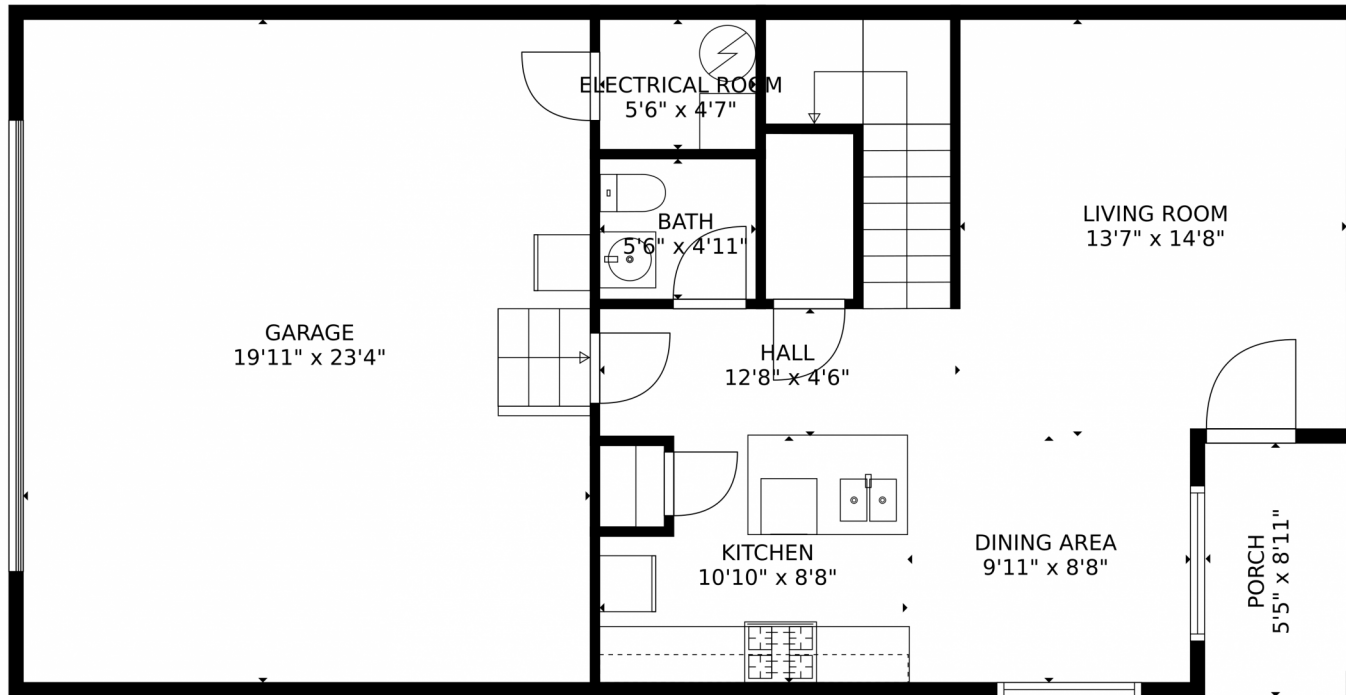
 0.03 Acre



Anali Roath
719-310-9336
anali@windermere.com



1572 Sepia Avenue, Longmont, CO 80501 – Main Level



GROSS INTERNAL AREA
FLOOR 1: 539 sq. ft, FLOOR 2: 1037 sq. ft
EXCLUDED AREAS: GARAGE: 465 sq. ft, ELECTRICAL ROOM: 25 sq. ft, PORCH: 49 sq. ft,
BALCONY: 44 sq. ft
TOTAL: 1576 sq. ft
MEASUREMENTS CALCULATED BY V1Photos.COM ARE DEEMED HIGHLY RELIABLE BUT NOT GUARANTEED.



Disclaimer: Sizes and Dimensions are Approximate, Actual May Vary.



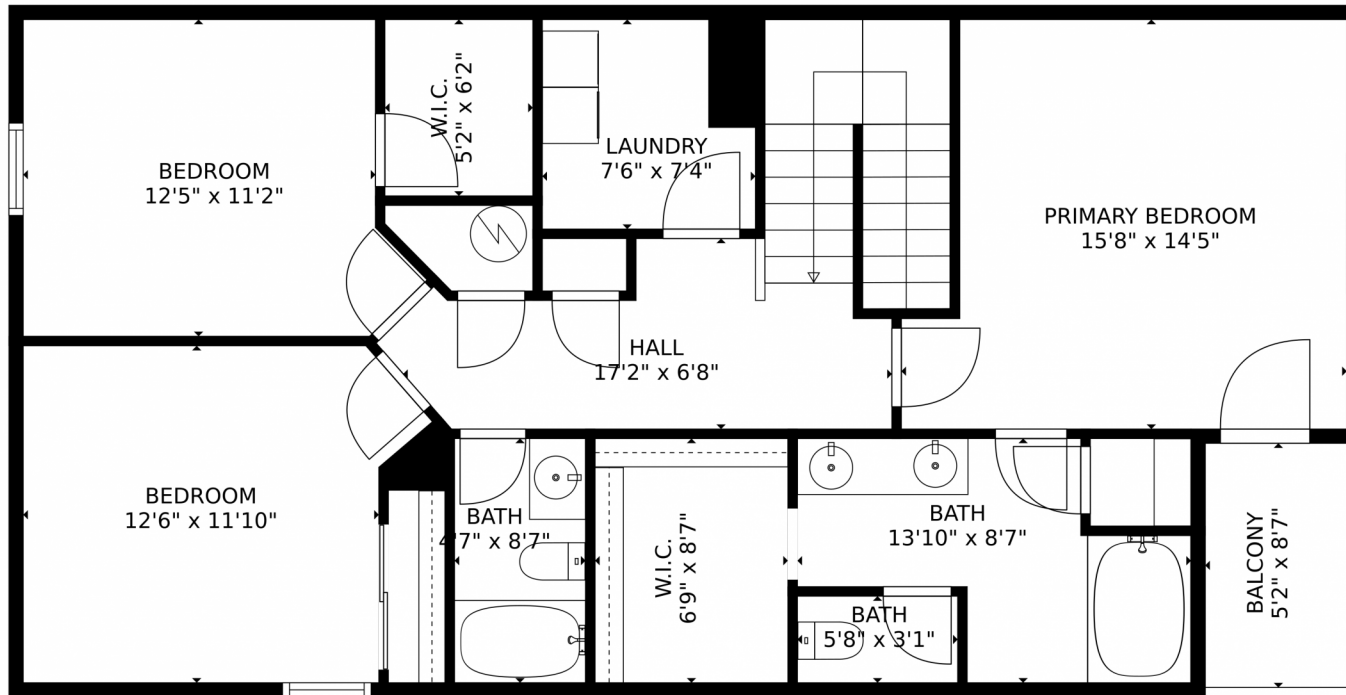
Anali Roath
719-310-9336
anali@windermere.com



Scan code for more property details

A QR code is provided for scanning to access more property details. To the left of the QR code is a small icon of a smartphone displaying a QR code.

1572 Sepia Avenue, Longmont, CO 80501 – Second Level



GROSS INTERNAL AREA
FLOOR 1: 539 sq. ft, FLOOR 2: 1037 sq. ft
EXCLUDED AREAS: GARAGE: 465 sq. ft, ELECTRICAL ROOM: 25 sq. ft, PORCH: 49 sq. ft,
BALCONY: 44 sq. ft
TOTAL: 1576 sq. ft
MEASUREMENTS CALCULATED BY V1Photos.com ARE DEEMED HIGHLY RELIABLE BUT NOT GUARANTEED.



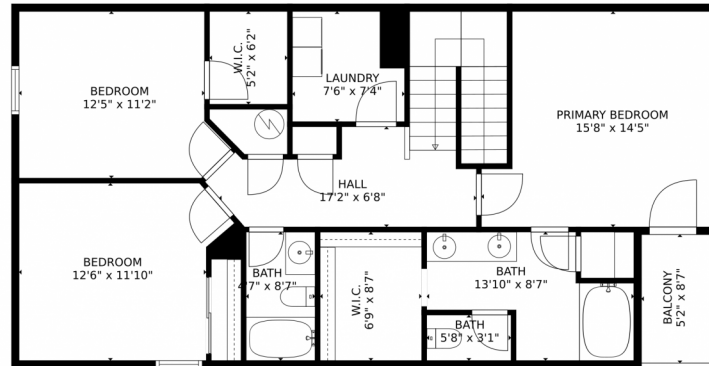
Disclaimer: Sizes and Dimensions are Approximate, Actual May Vary.



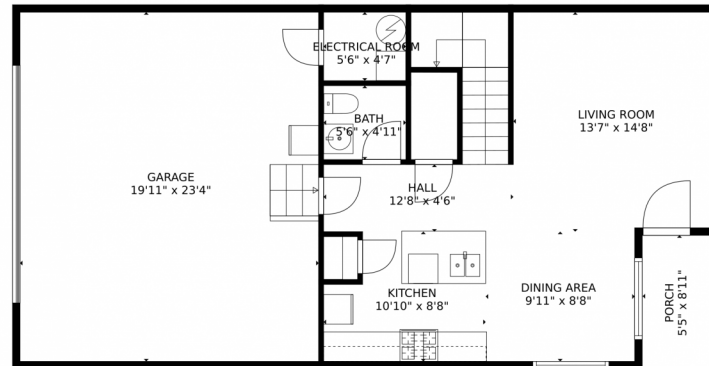
Anali Roath
719-310-9336
anali@windermere.com



1572 Sepia Avenue, Longmont, CO 80501 – All Levels



FLOOR 2



FLOOR 1

GROSS INTERNAL AREA
FLOOR 1: 539 sq. ft, FLOOR 2: 1037 sq. ft
EXCLUDED AREAS: GARAGE: 465 sq. ft, ELECTRICAL ROOM: 25 sq. ft, PORCH: 49 sq. ft,
BALCONY: 44 sq. ft
TOTAL: 1576 sq. ft
MEASUREMENTS CALCULATED BY V1Photos.com ARE DEEMED HIGHLY RELIABLE BUT NOT GUARANTEED.



Disclaimer: Sizes and Dimensions are Approximate, Actual May Vary.



Anali Roath
719-310-9336
anali@windermere.com

