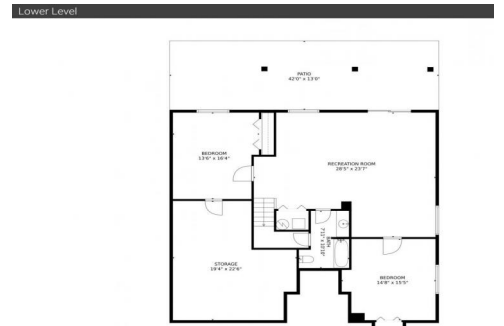




611 La Bourgade Point
 Colorado Springs, CO 80906
COMMUNITY: Highland Terrace



Single Family



3492 SQFT



3 Beds



2/1 Baths



2 Car



0.29 Acre

PROPERTY DETAILS

Presenting an exquisite property in Colorado Springs, CO. This single-family home features 3 bedrooms, 2 full bathrooms, and 1 half bathroom. With 3492 sqft of living space and a 2-car garage, it offers both style and functionality. The entrance foyer has hardwood floors and high ceilings. The living room has a fireplace and built-in shelves. The dining area has hardwood floors and abundant natural light. The kitchen has white cabinetry and modern appliances. The bedrooms are peaceful with ample natural light. The primary bedroom has hardwood floors and a vaulted ceiling. The bathrooms have light tile floors and oversized vanities. Outside, there is a lovely patio and terrace area with mountain views. The yard is landscaped. Don't miss this exceptional property!



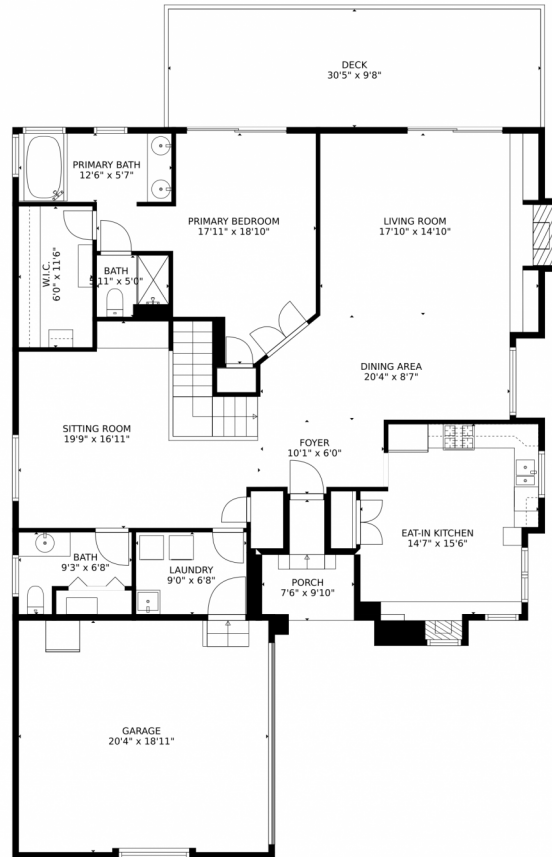
Michelle Blessing
 719-649-4200
 mblessing@erashields.com



Scan code
 for more
 property
 details



611 La Bourgade Point, Colorado Springs, CO 80906 – Main Level



GROSS INTERNAL AREA
Below Ground: 1154 sq. ft, FLOOR 2: 1593 sq. ft
EXCLUDED AREAS: STORAGE: 361 sq. ft, UNDEFINED: 18 sq. ft, PATIO: 549 sq. ft,
GARAGE: 386 sq. ft, DECK: 294 sq. ft, PORCH: 53 sq. ft,
FIREPLACE: 5 sq. ft
TOTAL: 2747 sq. ft
MEASUREMENTS CALCULATED BY V1Photos.com ARE DEEMED HIGHLY RELIABLE BUT NOT GUARANTEED.



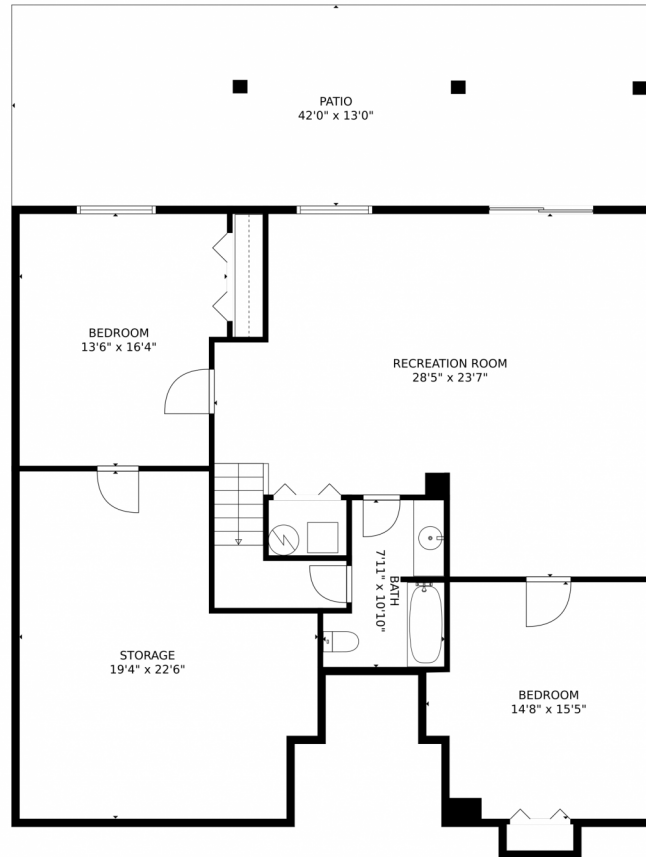
Disclaimer: Sizes and Dimensions are Approximate, Actual May Vary.



Michelle Blessing
719-649-4200
mblessing@erashields.com



611 La Bourgade Point, Colorado Springs, CO 80906 — Lower Level



GROSS INTERNAL AREA
Below Ground: 1154 sq. ft, FLOOR 2: 1593 sq. ft
EXCLUDED AREAS: STORAGE: 361 sq. ft, UNDEFINED: 18 sq. ft, PATIO: 549 sq. ft,
GARAGE: 386 sq. ft, DECK: 294 sq. ft, PORCH: 53 sq. ft,
FIREPLACE: 5 sq. ft
TOTAL: 2747 sq. ft
MEASUREMENTS CALCULATED BY V1Photos.com ARE DEEMED HIGHLY RELIABLE BUT NOT GUARANTEED.



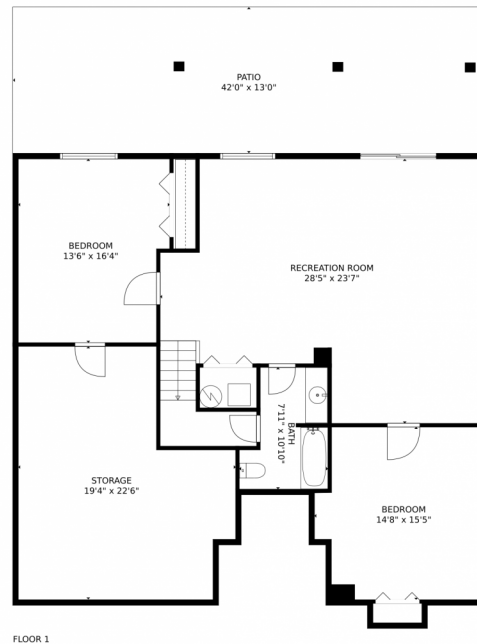
Disclaimer: Sizes and Dimensions are Approximate, Actual May Vary.



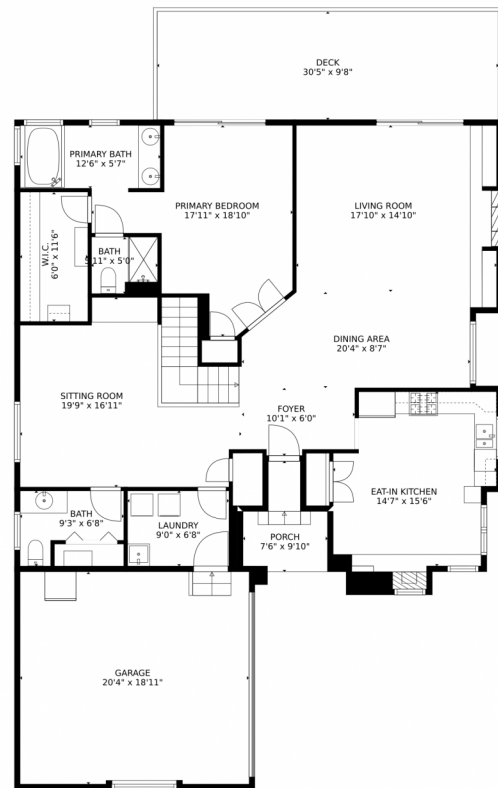
Michelle Blessing
719-649-4200
mblessing@erashields.com



611 La Bourgade Point, Colorado Springs, CO 80906 – All Levels



FLOOR 1



FLOOR 2

GROSS INTERNAL AREA
Below Ground: 1154 sq. ft, FLOOR 2: 1593 sq. ft
EXCLUDED AREAS: STORAGE: 361 sq. ft, UNDEFINED: 18 sq. ft, PATIO: 549 sq. ft,
GARAGE: 386 sq. ft, DECK: 294 sq. ft, PORCH: 53 sq. ft,
FIREPLACE: 5 sq. ft
TOTAL: 2747 sq. ft
MEASUREMENTS CALCULATED BY V1Photos.COM ARE DEEMED HIGHLY RELIABLE BUT NOT GUARANTEED.



Disclaimer: Sizes and Dimensions are Approximate, Actual May Vary.



Michelle Blessing
719-649-4200
mblessing@erashields.com

