



4161 S Zephyr Street
 Lakewood, CO 80235
COMMUNITY: Marston Slopes

MLS # 7434534
PRICE \$910,000



Single Family



4369 SQFT



2 Beds



2/1 Baths



3 Car



0.28 Acre



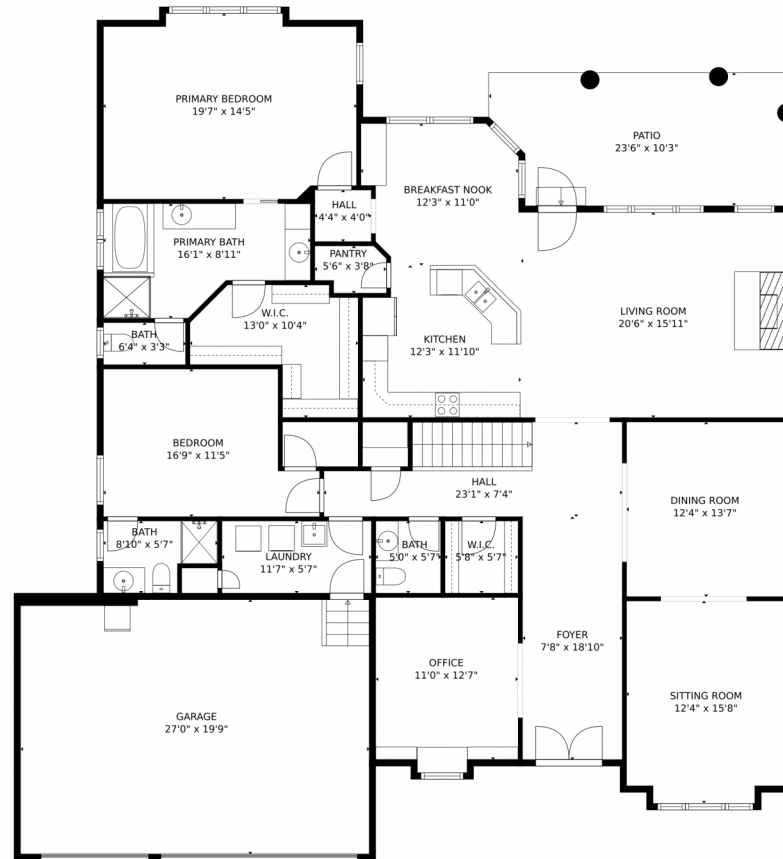
Annie Schneider
 303-548-5299
 annie@annieschneider.com



Scan code
 for more
 property
 details



4161 S Zephyr Street, Lakewood, CO 80235 – Main Floor



GROSS INTERNAL AREA
Below Ground: 0 sq. ft, FLOOR 2: 2386 sq. ft
EXCLUDED AREAS: UNFINISHED BASEMENT: 1679 sq. ft, GARAGE: 533 sq. ft, PATIO: 227 sq. ft
TOTAL: 2386 sq. ft
MEASUREMENTS CALCULATED BY V1Photos.COM ARE DEEMED HIGHLY RELIABLE BUT NOT GUARANTEED.



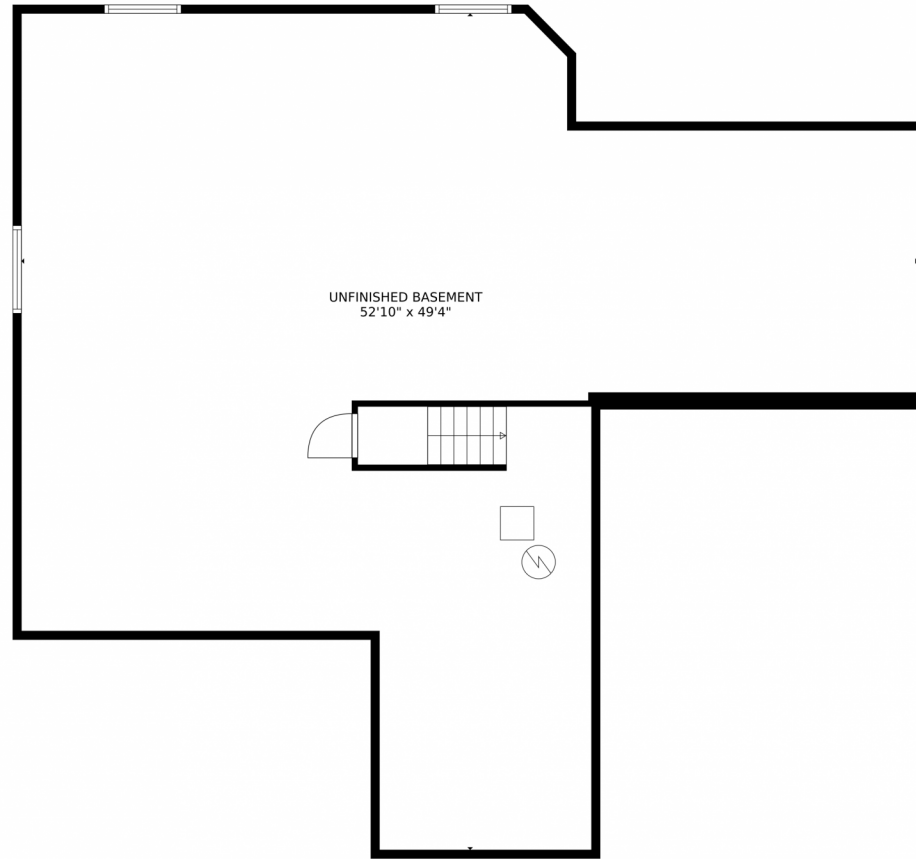
Disclaimer: Sizes and Dimensions are Approximate, Actual May Vary.



Annie Schneider
303-548-5299
annie@annieschneider.com



4161 S Zephyr Street, Lakewood, CO 80235 – Basement



GROSS INTERNAL AREA
Below Ground: 0 sq. ft, FLOOR 2: 2386 sq. ft
EXCLUDED AREAS: UNFINISHED BASEMENT: 1679 sq. ft, GARAGE: 533 sq. ft, PATIO: 227 sq. ft
TOTAL: 2386 sq. ft
MEASUREMENTS CALCULATED BY V1Photos.com ARE DEEMED HIGHLY RELIABLE BUT NOT GUARANTEED.



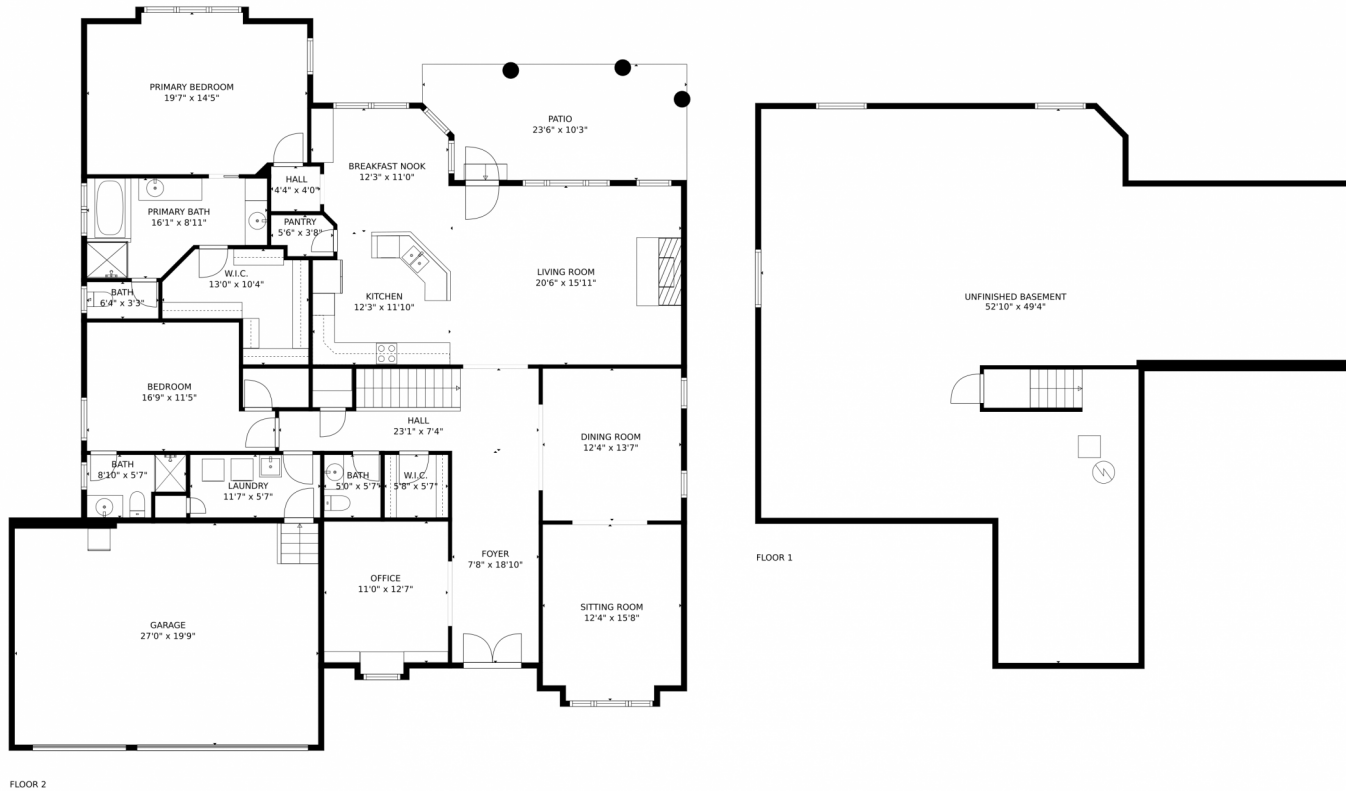
Disclaimer: Sizes and Dimensions are Approximate, Actual May Vary.



Annie Schneider
303-548-5299
annie@annieschneider.com



4161 S Zephyr Street, Lakewood, CO 80235 – All Floors



GROSS INTERNAL AREA
Below Ground: 0 sq. ft, FLOOR 2: 2386 sq. ft
EXCLUDED AREAS: UNFINISHED BASEMENT: 1679 sq. ft, GARAGE: 533 sq. ft, PATIO: 227 sq. ft
TOTAL: 2386 sq. ft
MEASUREMENTS CALCULATED BY V1Photos.COM ARE DEEMED HIGHLY RELIABLE BUT NOT GUARANTEED.



Disclaimer: Sizes and Dimensions are Approximate, Actual May Vary.



Annie Schneider
303-548-5299
annie@annieschneider.com

