



34115 Goldenrod Circle, Kiowa, CO 80117 - All Levels



Single Family



1758 SQFT



4 Beds



2 Baths



2 Car



1.81 Acre

## PROPERTY DETAILS

This manufactured home on 1.8 acres offers rustic charm and modern comfort. With 1758 sq ft, it has 4 bedrooms and 2 bathrooms. The open concept living and dining areas are filled with natural light. The primary suite has an ensuite bathroom, and there are 3 additional cozy bedrooms. A patio extends the living space outdoors, with beautiful views. Close to Metro Denver, this home offers a tranquil Colorado lifestyle. Loan assistance available, contact Melissa Town with The Town Group.



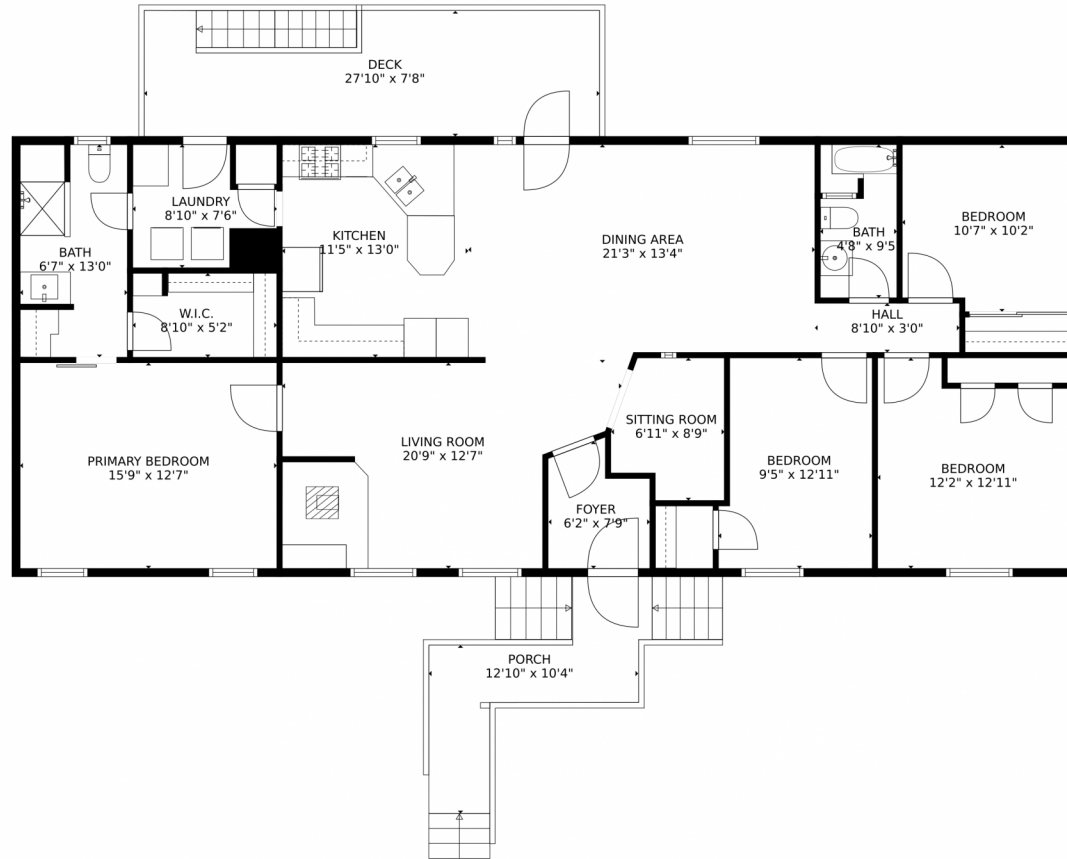
**Katie Robinson**  
970-430-9630  
katierobinson@windermere.com



Scan code  
for more  
property  
details



# 34115 Goldenrod Circle, Kiowa, CO 80117 – Main Level



GROSS INTERNAL AREA  
Below Ground: 0 sq. ft, FLOOR 2: 1677 sq. ft  
EXCLUDED AREAS: PATIO: 140 sq. ft, CRAWL SPACE: 919 sq. ft, GARAGE: 745 sq. ft.  
DECK: 189 sq. ft, PORCH: 91 sq. ft  
TOTAL: 1677 sq. ft  
MEASUREMENTS CALCULATED BY V1Photos.COM ARE DEEMED HIGHLY RELIABLE BUT NOT GUARANTEED.



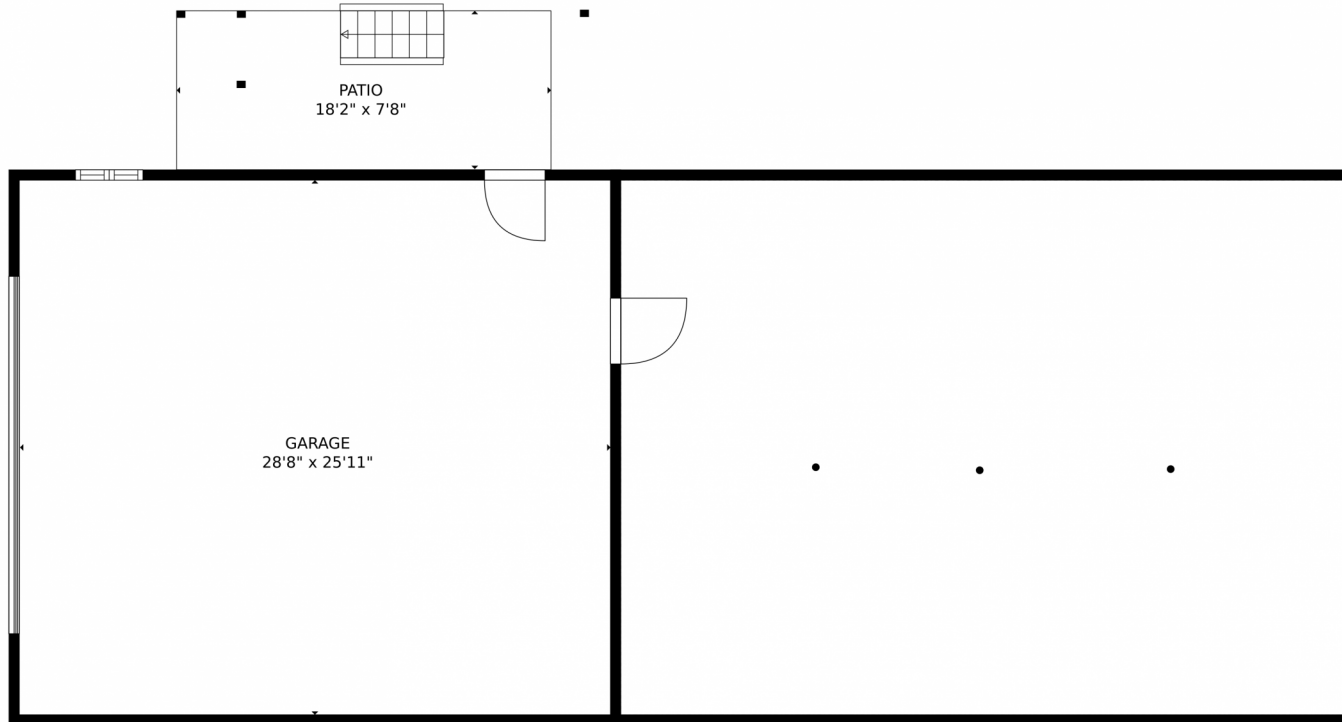
Disclaimer: Sizes and Dimensions are Approximate, Actual May Vary.



**Katie Robinson**  
970-430-9630  
katierobinson@windermere.com



# 34115 Goldenrod Circle, Kiowa, CO 80117 – Lower Level



GROSS INTERNAL AREA  
Below Ground: 0 sq. ft, FLOOR 2: 1677 sq. ft  
EXCLUDED AREAS: PATIO: 140 sq. ft, CRAWL SPACE: 919 sq. ft, GARAGE: 745 sq. ft,  
DECK: 189 sq. ft, PORCH: 91 sq. ft  
TOTAL: 1677 sq. ft  
MEASUREMENTS CALCULATED BY V1Photos.COM ARE DEEMED HIGHLY RELIABLE BUT NOT GUARANTEED.



Disclaimer: Sizes and Dimensions are Approximate, Actual May Vary.

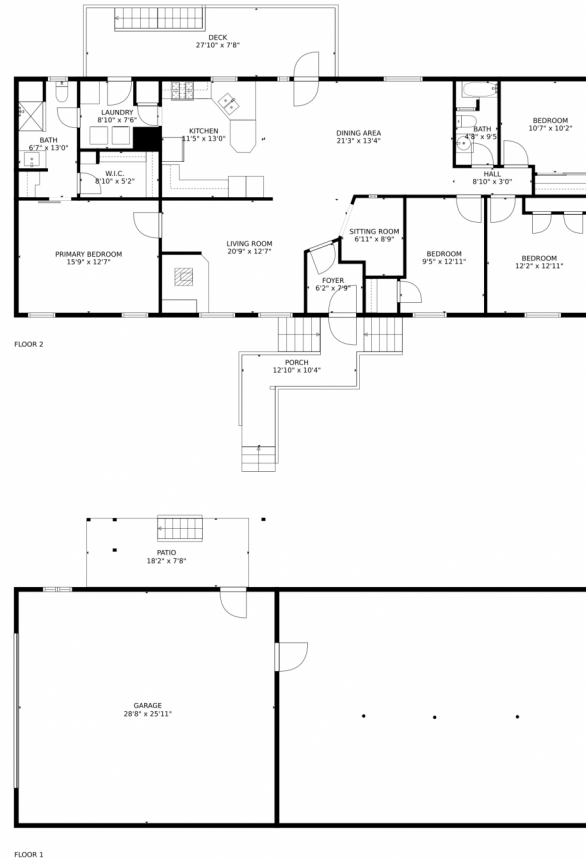


**Katie Robinson**  
970-430-9630  
katierobinson@windermere.com



Scan code  
for more  
property  
details

# 34115 Goldenrod Circle, Kiowa, CO 80117 – All Levels



GROSS INTERNAL AREA  
Below Ground: 0 sq. ft, FLOOR 2: 1677 sq. ft  
EXCLUDED AREAS: PATIO: 140 sq. ft, CRAWL SPACE: 919 sq. ft, GARAGE: 745 sq. ft,  
DECK: 189 sq. ft, PORCH: 91 sq. ft  
TOTAL: 1677 sq. ft  
MEASUREMENTS CALCULATED BY V1Photos.com ARE DEEMED HIGHLY RELIABLE BUT NOT GUARANTEED.



Disclaimer: Sizes and Dimensions are Approximate, Actual May Vary.



**Katie Robinson**  
970-430-9630  
katierobinson@windermere.com

