



2696 Empire Avenue
Loveland, CO 80538
COMMUNITY: Crestview

MLS # IR996578
PRICE \$835,000



Single Family



3610 SQFT



4 Beds



3/1 Baths



2 Car



0.2 Acre



Alexis Foster
970-310-6999
alexisfoster@windermere.com



Scan code
for more
property
details



2696 Empire Avenue, Loveland, CO 80538 – Main Level



GROSS INTERNAL AREA
Below Ground: 1083 sq. ft, FLOOR 2: 2203 sq. ft
EXCLUDED AREAS: PATIO: 324 sq. ft, STORAGE: 225 sq. ft, PORCH: 251 sq. ft,
DECK: 567 sq. ft, GARAGE: 497 sq. ft, FIREPLACE: 6 sq. ft
TOTAL: 3286 sq. ft
MEASUREMENTS CALCULATED BY V1Photos.COM ARE DEEMED HIGHLY RELIABLE BUT NOT GUARANTEED.



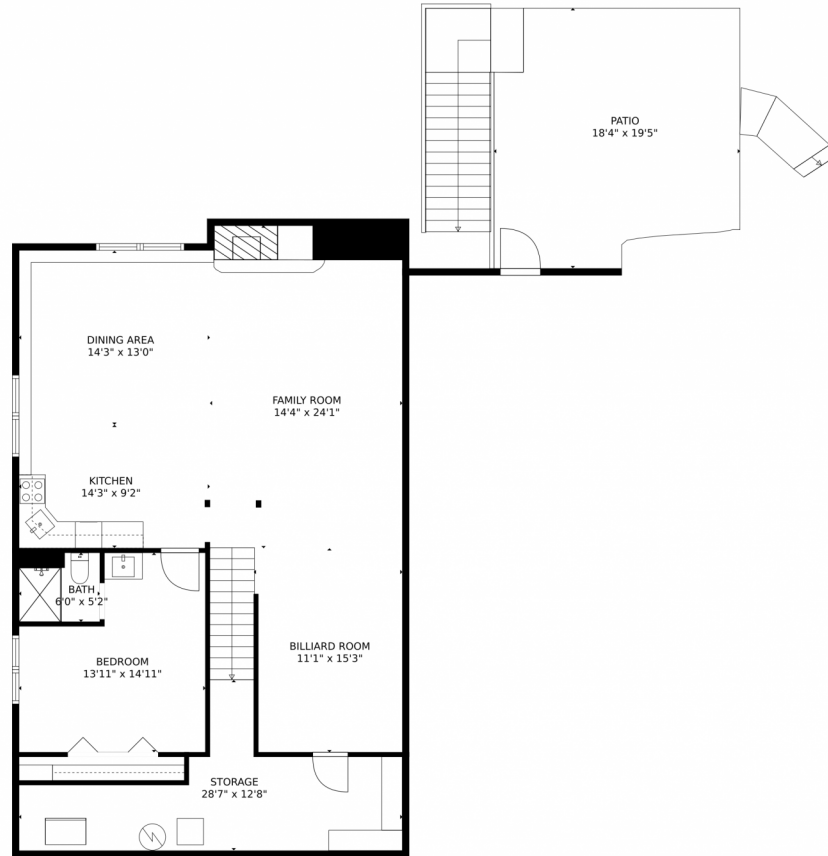
Disclaimer: Sizes and Dimensions are Approximate, Actual May Vary.



Alexis Foster
970-310-6999
alexisfoster@windermere.com



2696 Empire Avenue, Loveland, CO 80538 – Lower Level



GROSS INTERNAL AREA
Below Ground: 1083 sq. ft, FLOOR 2: 2203 sq. ft
EXCLUDED AREAS: PATIO: 324 sq. ft, STORAGE: 225 sq. ft, PORCH: 251 sq. ft,
DECK: 567 sq. ft, GARAGE: 497 sq. ft, FIREPLACE: 6 sq. ft
TOTAL: 3286 sq. ft
MEASUREMENTS CALCULATED BY V1Photos.com ARE DEEMED HIGHLY RELIABLE BUT NOT GUARANTEED.



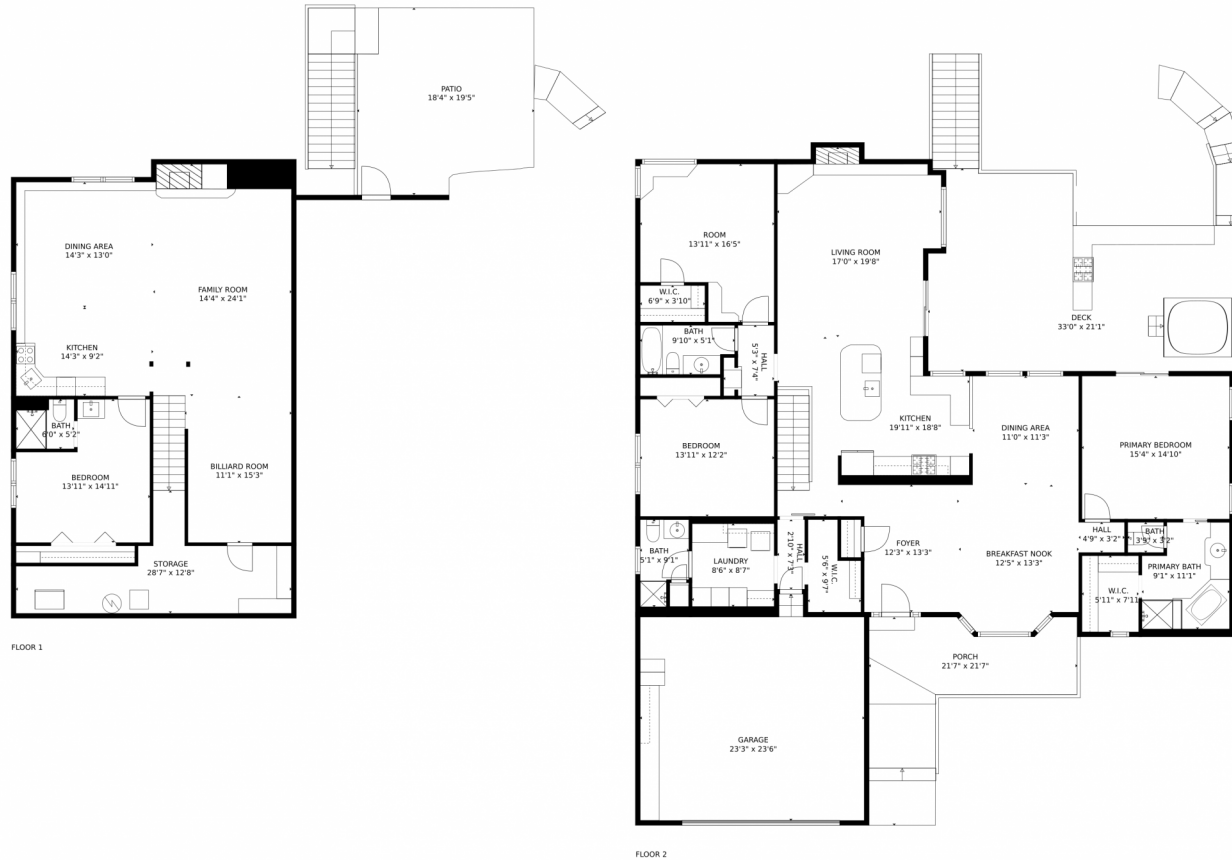
Disclaimer: Sizes and Dimensions are Approximate, Actual May Vary.



Alexis Foster
970-310-6999
alexisfoster@windermere.com



2696 Empire Avenue, Loveland, CO 80538 – All Levels



GROSS INTERNAL AREA
Below Ground: 1083 sq. ft, FLOOR 2: 2203 sq. ft
EXCLUDED AREAS: PATIO: 324 sq. ft, STORAGE: 225 sq. ft, PORCH: 251 sq. ft,
DECK: 567 sq. ft, GARAGE: 497 sq. ft, FIREPLACE: 6 sq. ft
TOTAL: 3286 sq. ft
MEASUREMENTS CALCULATED BY V1Photos.COM ARE DEEMED HIGHLY RELIABLE BUT NOT GUARANTEED.

Disclaimer: Sizes and Dimensions are Approximate, Actual May Vary.



Alexis Foster
970-310-6999
alexisfoster@windermere.com

