



1164 Snowberry Drive
Golden, CO 80401

COMMUNITY: Genesee

MLS # 5854964
PRICE \$1,400,000



Single Family



4072 SQFT



4 Beds



3/1 Baths



3 Car



0.49 Acre

PROPERTY DETAILS

1164 Snowberry Drive is a stunning 4-bedroom, 4-bathroom home in Genesee. It offers amazing views, a 1/2 Acre lot, and an attached 3 Car Garage. The updated kitchen features quartz counters and an open floorplan. This home is a sanctuary where you can unwind and embrace the Colorado mountain lifestyle. Don't miss the time lapse video! <https://vimeo.com/867204942>



Julie Leins

720-474-0928

julieleins@kw.com

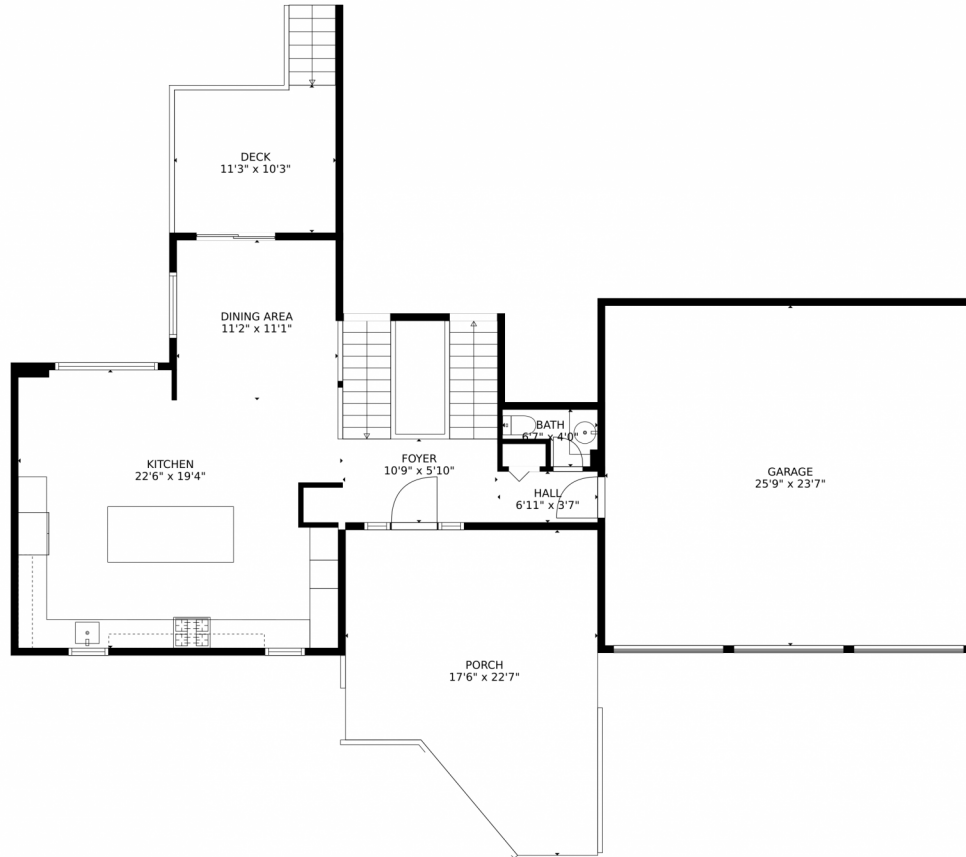
<https://coloradohomesdreamteam.com>



Scan code
for more
property
details



1164 Snowberry Drive, Golden, CO 80401 – Main Level



GROSS INTERNAL AREA
Below Ground: 537 sq. ft. FLOOR 2: 897 sq. ft. FLOOR 3: 641 sq. ft. FLOOR 4: 738 sq. ft. FLOOR 5: 610 sq. ft.
EXCLUDED AREAS: WINE CELLAR: 148 sq. ft. PATIO: 31 sq. ft. DECK: 773 sq. ft.
STORAGE: 55 sq. ft. BALCONY: 291 sq. ft. GARAGE: 607 sq. ft.
PORCH: 327 sq. ft. OPEN TO BELOW: 59 sq. ft.
TOTAL: 3423 sq. ft.
MEASUREMENTS CALCULATED BY V1Photos.COM ARE DEEMED HIGHLY RELIABLE BUT NOT GUARANTEED.



Disclaimer: Sizes and Dimensions are Approximate, Actual May Vary.

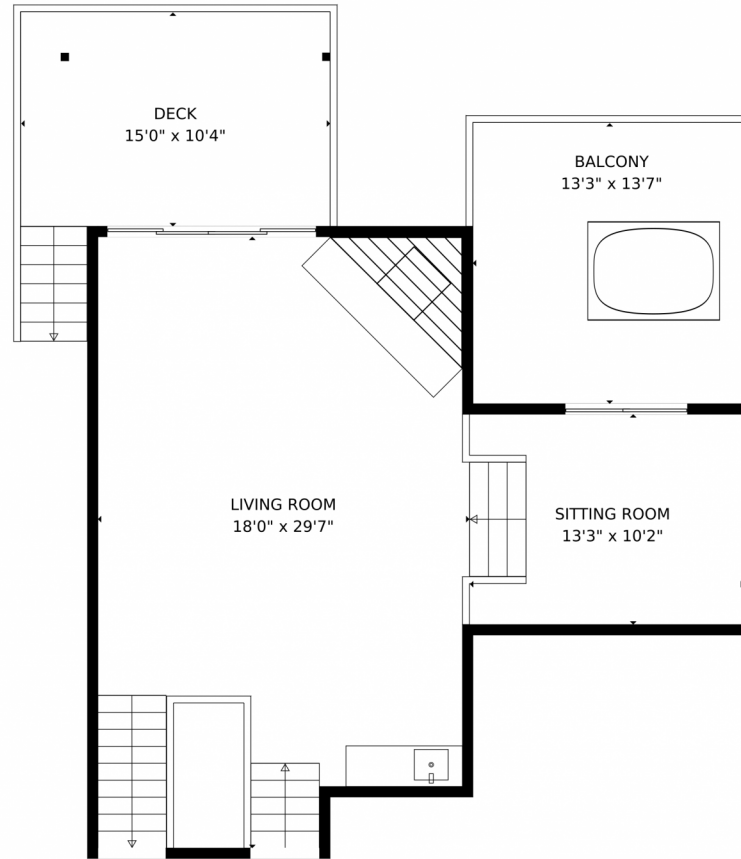


Julie Leins
720-474-0928
julieleins@kw.com
<https://coloradohomesdreamteam.com>



Scan code
for more
property
details

1164 Snowberry Drive, Golden, CO 80401 – 3rd Level



GROSS INTERNAL AREA
Below Ground: 537 sq. ft. FLOOR 2: 897 sq. ft. FLOOR 3: 641 sq. ft. FLOOR 4: 738 sq. ft. FLOOR 5: 610 sq. ft.
EXCLUDED AREAS: WINE CELLAR: 148 sq. ft. PATIO: 31 sq. ft. DECK: 773 sq. ft.
STORAGE: 55 sq. ft. BALCONY: 291 sq. ft. GARAGE: 607 sq. ft.
PORCH: 327 sq. ft. OPEN TO BELOW: 59 sq. ft.
TOTAL: 3423 sq. ft.
MEASUREMENTS CALCULATED BY V1Photos.COM ARE DEEMED HIGHLY RELIABLE BUT NOT GUARANTEED.



Disclaimer: Sizes and Dimensions are Approximate, Actual May Vary.



Julie Leins

720-474-0928

julieleins@kw.com

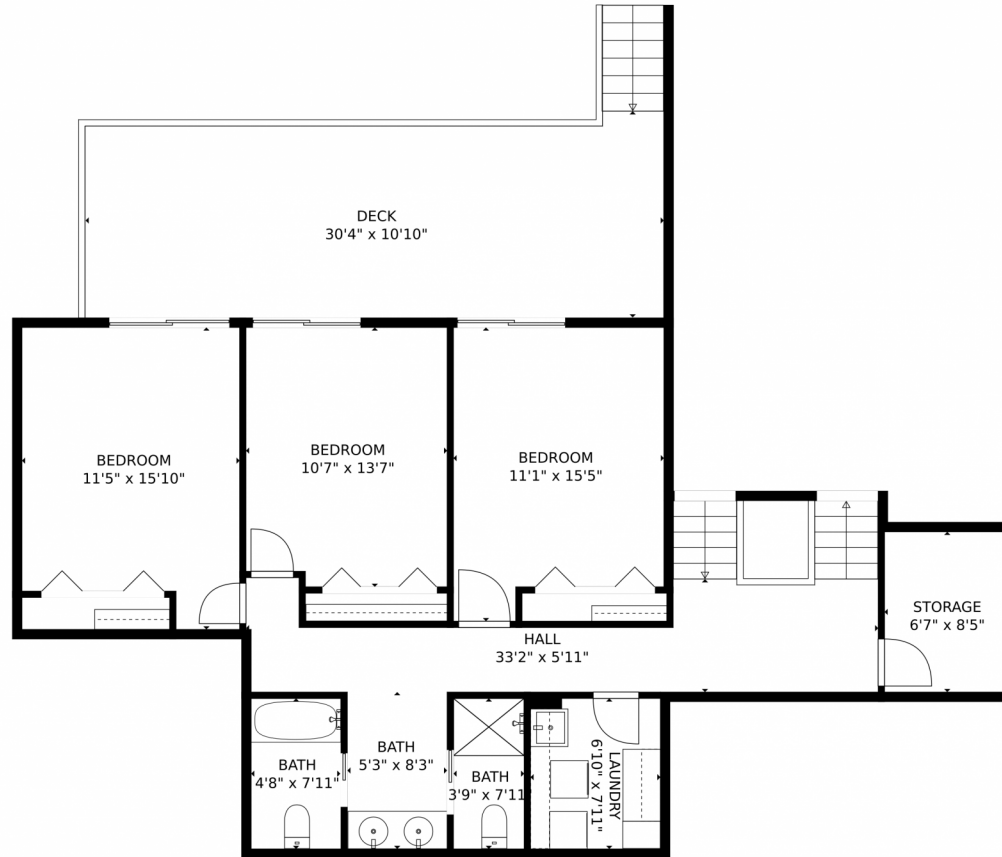
<https://coloradohomesdreamteam.com>



Scan code
for more
property
details



1164 Snowberry Drive, Golden, CO 80401 – 2nd Level



GROSS INTERNAL AREA
Below Ground: 537 sq. ft. FLOOR 2: 897 sq. ft. FLOOR 3: 641 sq. ft. FLOOR 4: 738 sq. ft. FLOOR 5: 610 sq. ft.
EXCLUDED AREAS: WINE CELLAR: 148 sq. ft. PATIO: 31 sq. ft. DECK: 773 sq. ft.
STORAGE: 55 sq. ft. BALCONY: 291 sq. ft. GARAGE: 607 sq. ft.
PORCH: 327 sq. ft. OPEN TO BELOW: 59 sq. ft.
TOTAL: 3423 sq. ft.
MEASUREMENTS CALCULATED BY V1Photos.com ARE DEEMED HIGHLY RELIABLE BUT NOT GUARANTEED.



Disclaimer: Sizes and Dimensions are Approximate, Actual May Vary.



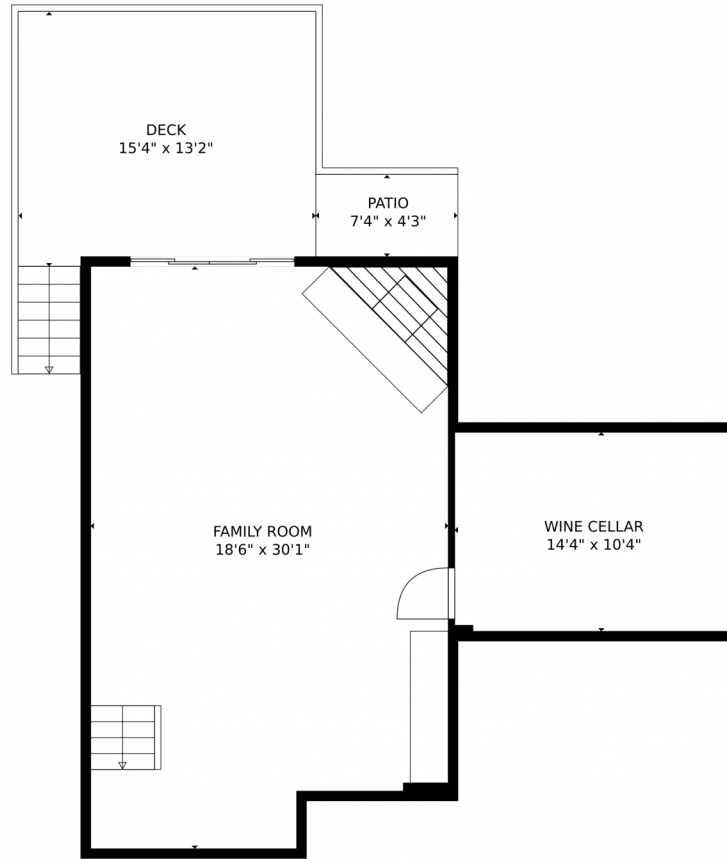
Julie Leins
720-474-0928
julieleins@kw.com
<https://coloradohomesdreamteam.com>



Scan code
for more
property
details



1164 Snowberry Drive, Golden, CO 80401 – 1st Level



GROSS INTERNAL AREA
Below Ground: 537 sq. ft. FLOOR 2: 897 sq. ft. FLOOR 3: 641 sq. ft. FLOOR 4: 738 sq. ft. FLOOR 5: 610 sq. ft.
EXCLUDED AREAS: WINE CELLAR: 148 sq. ft. PATIO: 31 sq. ft. DECK: 773 sq. ft.
STORAGE: 55 sq. ft. BALCONY: 291 sq. ft. GARAGE: 607 sq. ft.
PORCH: 327 sq. ft. OPEN TO BELOW: 59 sq. ft.
TOTAL: 3423 sq. ft.
MEASUREMENTS CALCULATED BY V1Photos.COM ARE DEEMED HIGHLY RELIABLE BUT NOT GUARANTEED.

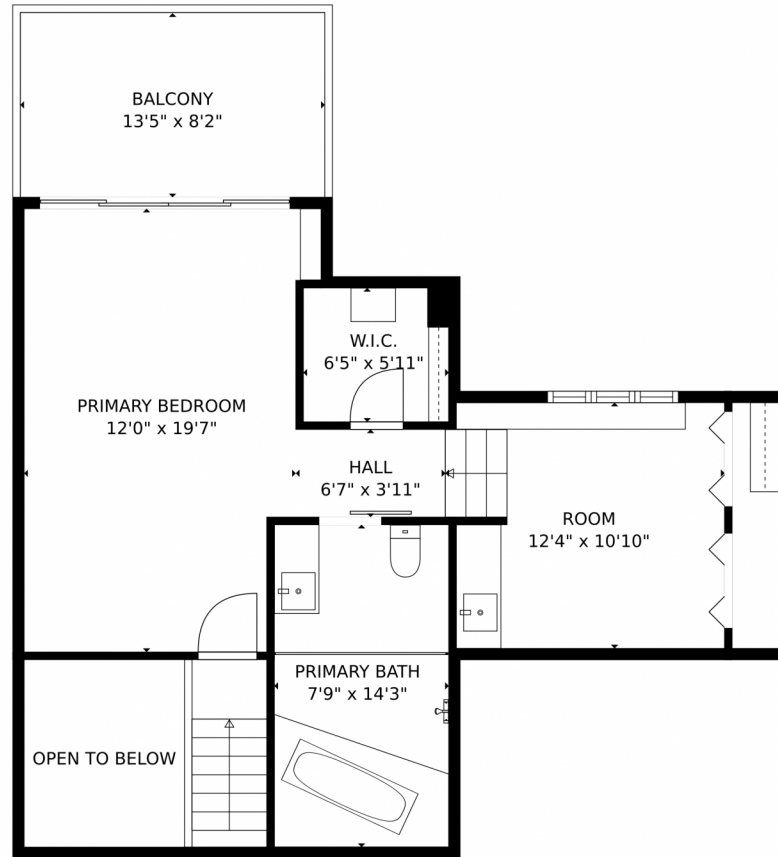


Disclaimer: Sizes and Dimensions are Approximate, Actual May Vary.



Julie Leins
720-474-0928
julieleins@kw.com
<https://coloradohomesdreamteam.com>





GROSS INTERNAL AREA
Below Ground: 537 sq. ft. FLOOR 2: 897 sq. ft. FLOOR 3: 641 sq. ft. FLOOR 4: 738 sq. ft. FLOOR 5: 610 sq. ft.
EXCLUDED AREAS: WINE CELLAR: 148 sq. ft. PATIO: 31 sq. ft. DECK: 773 sq. ft.
STORAGE: 55 sq. ft. BALCONY: 291 sq. ft. GARAGE: 607 sq. ft.
PORCH: 327 sq. ft. OPEN TO BELOW: 59 sq. ft.
TOTAL: 3423 sq. ft.
MEASUREMENTS CALCULATED BY V1Photos.COM ARE DEEMED HIGHLY RELIABLE BUT NOT GUARANTEED.



Disclaimer: Sizes and Dimensions are Approximate, Actual May Vary.



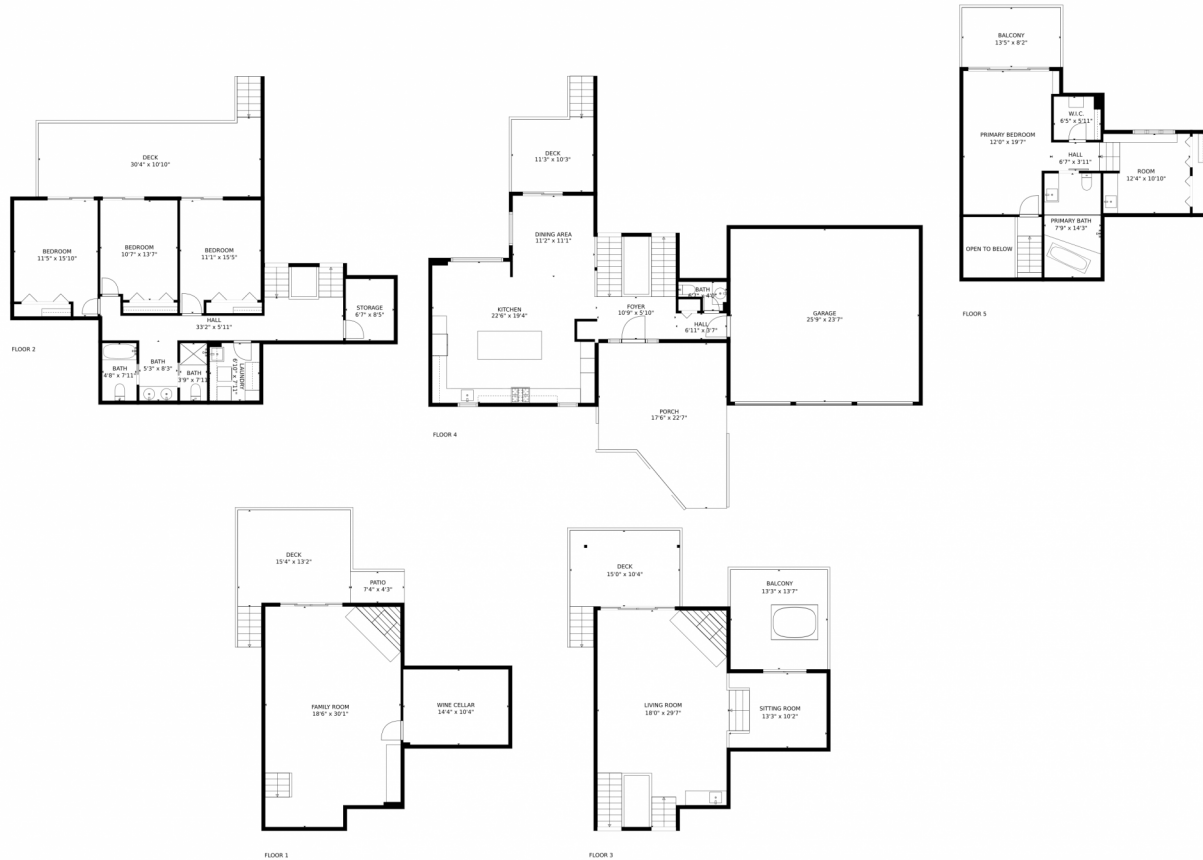
Julie Leins
720-474-0928
julieleins@kw.com
<https://coloradohomesdreamteam.com>



Scan code
for more
property
details



1164 Snowberry Drive, Golden, CO 80401 – All Floors



GROSS INTERNAL AREA
 Below Ground: 537 sq. ft. FLOOR 2: 897 sq. ft. FLOOR 3: 641 sq. ft. FLOOR 4: 738 sq. ft. FLOOR 5: 610 sq. ft.
 EXCLUDED AREAS: WINE CELLAR: 148 sq. ft. PATIO: 31 sq. ft. DECK: 773 sq. ft.
 STORAGE: 55 sq. ft. BALCONY: 291 sq. ft. GARAGE: 607 sq. ft.
 PORCH: 327 sq. ft. OPEN TO BELOW: 59 sq. ft.
TOTAL: 3423 sq. ft.

MEASUREMENTS CALCULATED BY V1Photos.com ARE DEEMED HIGHLY RELIABLE BUT NOT GUARANTEED.



Disclaimer: Sizes and Dimensions are Approximate, Actual May Vary.



Julie Leins
 720-474-0928
 julieleins@kw.com
<https://coloradohomesdreamteam.com>



Scan code
 for more
 property
 details

