

 Single Family

 1647 SQFT

 3 Beds

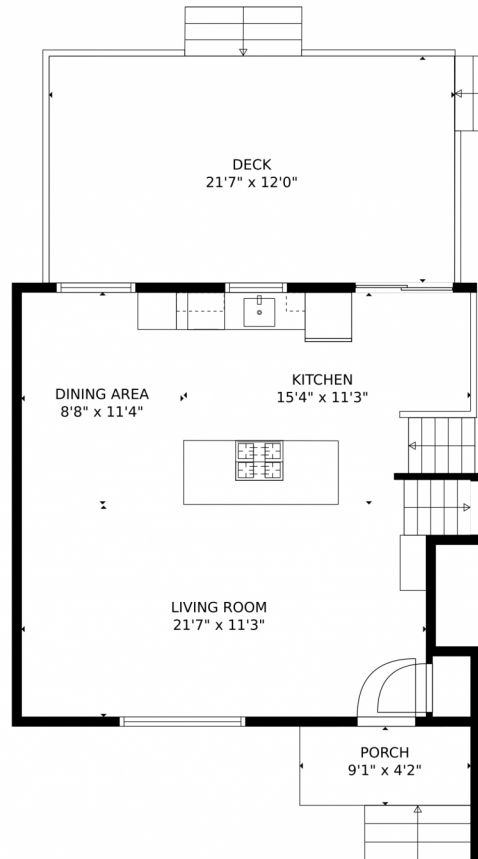
 2/1 Baths



Taylor Haas
303-665-7368
taylorh@coloradorpm.com
<https://www.coloradorpm.com/available-rental-properties-denver>



13795 West 68th Drive, Arvada, CO 80004 – Main Level



GROSS INTERNAL AREA
Below Ground: 0 sq. ft, FLOOR 2: 418 sq. ft, FLOOR 3: 527 sq. ft, FLOOR 4: 608 sq. ft
EXCLUDED AREAS: UNFINISHED BASEMENT: 540 sq. ft, GARAGE: 378 sq. ft, DECK: 262 sq. ft,
PORCH: 38 sq. ft
TOTAL: 1553 sq. ft
MEASUREMENTS CALCULATED BY V1Photos.com ARE DEEMED HIGHLY RELIABLE BUT NOT GUARANTEED.



Disclaimer: Sizes and Dimensions are Approximate, Actual May Vary.



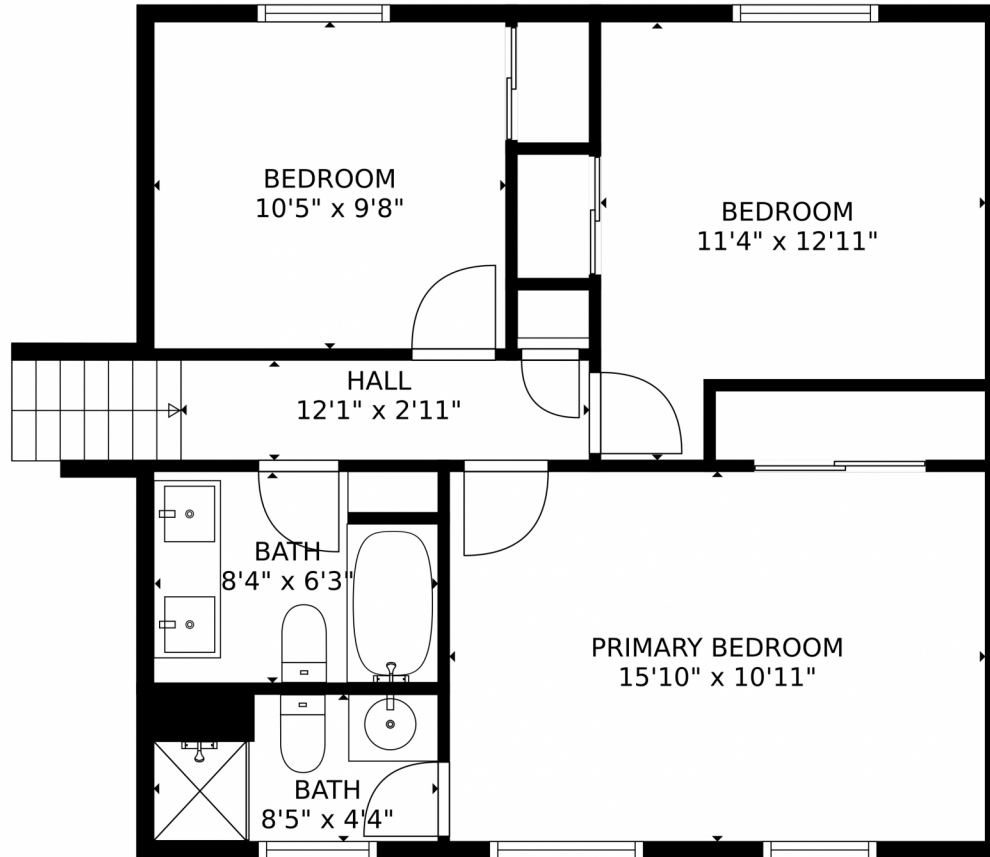
Taylor Haas
303-665-7368
taylorh@coloradorpm.com
<https://www.coloradorpm.com/available-rental-properties-denver>



Scan code
for more
property
details



13795 West 68th Drive, Arvada, CO 80004 – Upper Level



GROSS INTERNAL AREA
Below Ground: 0 sq. ft, FLOOR 2: 418 sq. ft, FLOOR 3: 527 sq. ft, FLOOR 4: 608 sq. ft
EXCLUDED AREAS: UNFINISHED BASEMENT: 540 sq. ft, GARAGE: 378 sq. ft, DECK: 262 sq. ft,
PORCH: 38 sq. ft
TOTAL: 1553 sq. ft
MEASUREMENTS CALCULATED BY V1Photos.COM ARE DEEMED HIGHLY RELIABLE BUT NOT GUARANTEED.



Disclaimer: Sizes and Dimensions are Approximate, Actual May Vary.



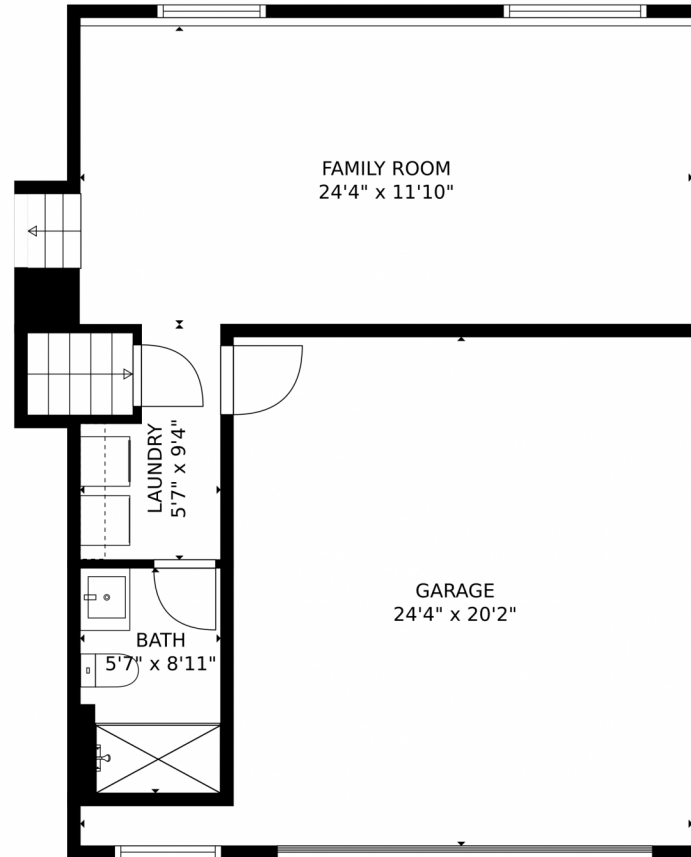
Taylor Haas
303-665-7368
taylorh@coloradorpm.com
<https://www.coloradorpm.com/available-rental-properties-denver>



Scan code
for more
property
details



13795 West 68th Drive, Arvada, CO 80004 — Lower Level



GROSS INTERNAL AREA
Below Ground: 0 sq. ft, FLOOR 2: 418 sq. ft, FLOOR 3: 527 sq. ft, FLOOR 4: 608 sq. ft
EXCLUDED AREAS: UNFINISHED BASEMENT: 540 sq. ft, GARAGE: 378 sq. ft, DECK: 262 sq. ft,
PORCH: 38 sq. ft
TOTAL: 1553 sq. ft
MEASUREMENTS CALCULATED BY V1Photos.COM ARE DEEMED HIGHLY RELIABLE BUT NOT GUARANTEED.



Disclaimer: Sizes and Dimensions are Approximate, Actual May Vary.

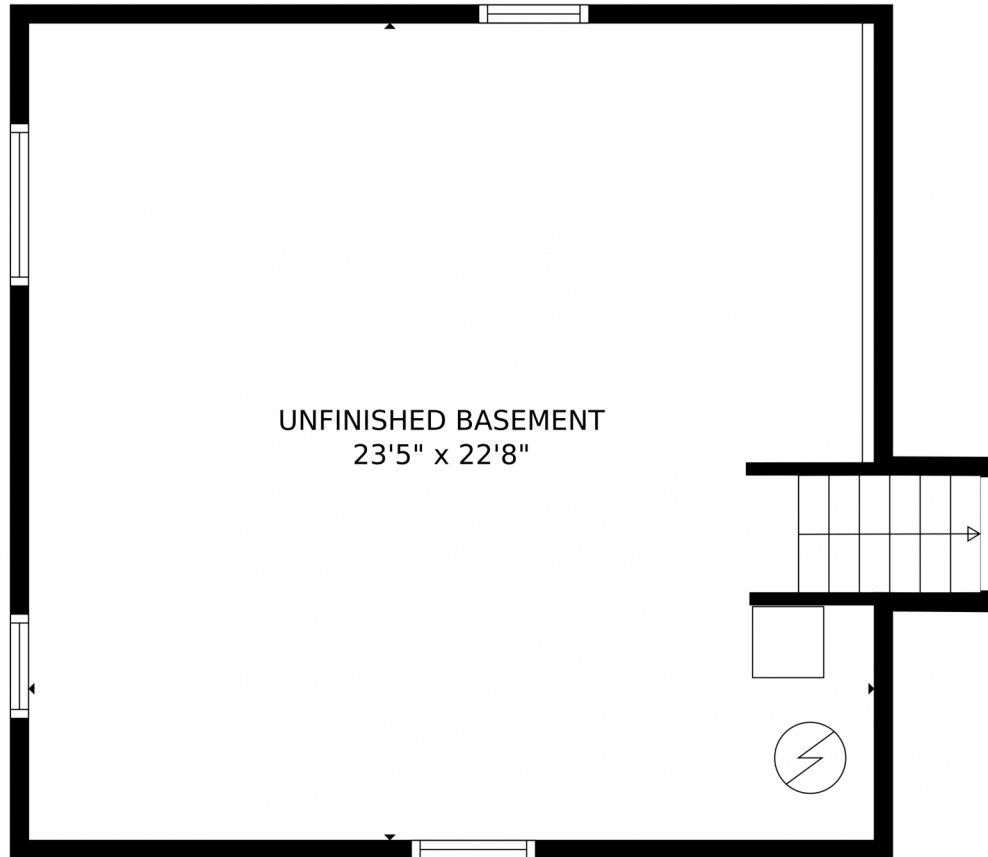


Taylor Haas
303-665-7368
taylorh@coloradorpm.com
<https://www.coloradorpm.com/available-rental-properties-denver>



Scan code
for more
property
details





GROSS INTERNAL AREA
Below Ground: 0 sq. ft, FLOOR 2: 418 sq. ft, FLOOR 3: 527 sq. ft, FLOOR 4: 608 sq. ft
EXCLUDED AREAS: UNFINISHED BASEMENT: 540 sq. ft, GARAGE: 378 sq. ft, DECK: 262 sq. ft,
PORCH: 38 sq. ft
TOTAL: 1553 sq. ft
MEASUREMENTS CALCULATED BY V1Photos.com ARE DEEMED HIGHLY RELIABLE BUT NOT GUARANTEED.



Disclaimer: Sizes and Dimensions are Approximate, Actual May Vary.



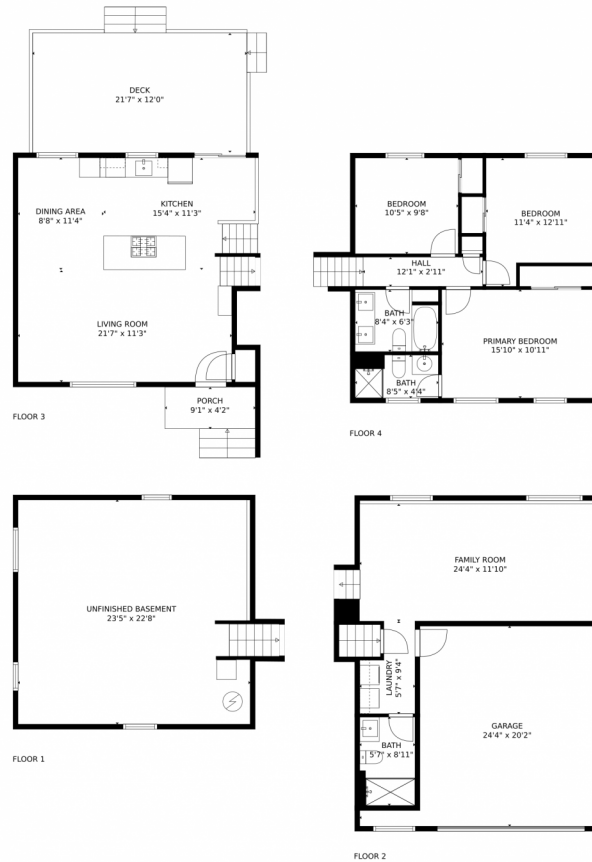
Taylor Haas
303-665-7368
taylorh@coloradorpm.com
<https://www.coloradorpm.com/available-rental-properties-denver>



Scan code
for more
property
details



13795 West 68th Drive, Arvada, CO 80004 — All Levels



GROSS INTERNAL AREA
Below Ground: 0 sq. ft, FLOOR 2: 418 sq. ft, FLOOR 3: 527 sq. ft, FLOOR 4: 608 sq. ft
EXCLUDED AREAS: UNFINISHED BASEMENT: 540 sq. ft, GARAGE: 378 sq. ft, DECK: 262 sq. ft,
PORCH: 38 sq. ft
TOTAL: 1553 sq. ft
MEASUREMENTS CALCULATED BY V1Photos.com ARE DEEMED HIGHLY RELIABLE BUT NOT GUARANTEED.



Disclaimer: Sizes and Dimensions are Approximate, Actual May Vary.



Taylor Haas
303-665-7368
taylorh@coloradorpm.com
<https://www.coloradorpm.com/available-rental-properties-denver>

