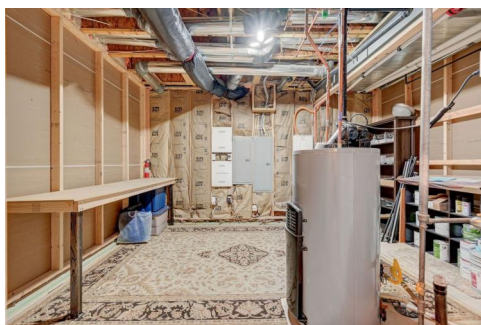




8056 Piney River Avenue  
Littleton, CO 80125  
**COMMUNITY:** Sterling Ranch

**MLS #** 8316930  
**PRICE** \$6,000



8056 Piney River Avenue, Littleton, CO 80125 - All Levels



Rental



4908 SQFT



4 Beds



3/1 Baths



2 Car



0.13 Acre



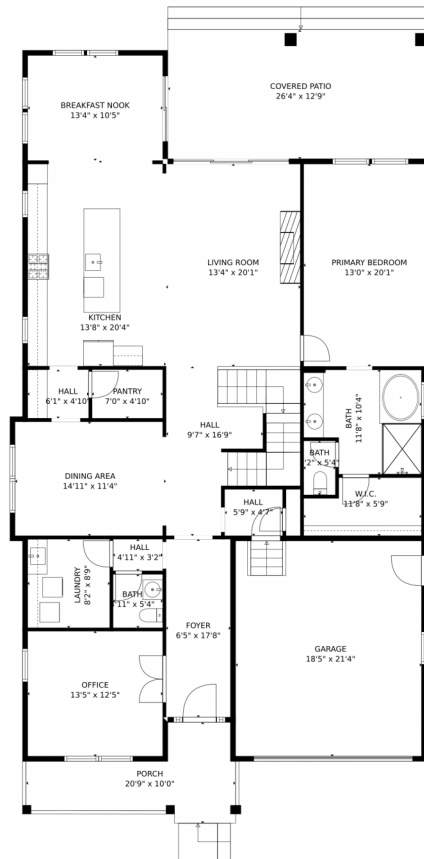
**Nancy Henderson**  
832-279-9504  
nancy@highridgerealty.co  
<http://www.highridgerealty.co>



Scan code  
for more  
property  
details



# 8056 Piney River Avenue, Littleton, CO 80125 — Main Level



GROSS INTERNAL AREA  
Below Ground: 1150 sq. ft, FLOOR 2: 2039 sq. ft, FLOOR 3: 650 sq. ft  
EXCLUDED AREAS: ELECTRICAL ROOM: 186 sq. ft, ROOM: 192 sq. ft, GARAGE: 394 sq. ft,  
PORCH: 133 sq. ft, COVERED PATIO: 367 sq. ft, OPEN TO BELOW: 545 sq. ft  
TOTAL: 3839 sq. ft  
MEASUREMENTS CALCULATED BY V1Photos.com ARE DEEMED HIGHLY RELIABLE BUT NOT GUARANTEED.



Disclaimer: Sizes and Dimensions are Approximate, Actual May Vary.



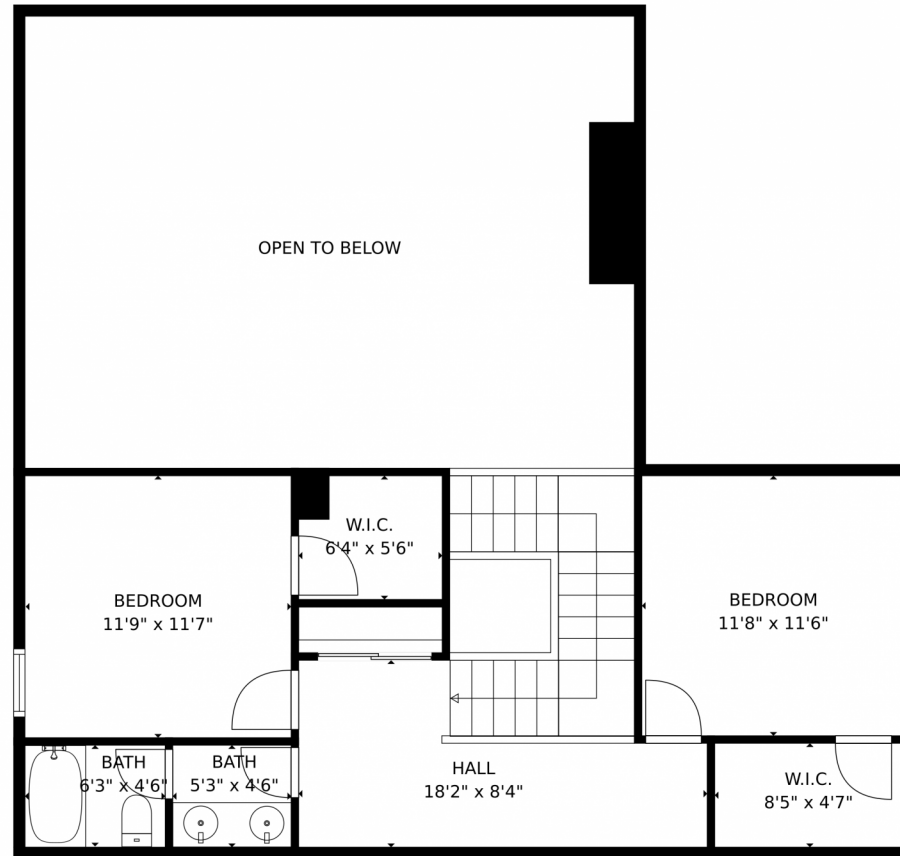
**Nancy Henderson**  
832-279-9504  
nancy@highridgerealty.co  
<http://www.highridgerealty.co>



Scan code  
for more  
property  
details



## 8056 Piney River Avenue, Littleton, CO 80125 – Second Level

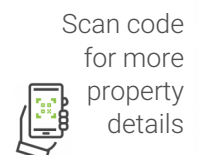


GROSS INTERNAL AREA  
Below Ground: 1150 sq. ft, FLOOR 2: 2039 sq. ft, FLOOR 3: 650 sq. ft  
EXCLUDED AREAS: ELECTRICAL ROOM: 186 sq. ft, ROOM: 192 sq. ft, GARAGE: 394 sq. ft,  
PORCH: 133 sq. ft, COVERED PATIO: 367 sq. ft, OPEN TO BELOW: 545 sq. ft  
TOTAL: 3839 sq. ft  
MEASUREMENTS CALCULATED BY V1Photos.com ARE DEEMED HIGHLY RELIABLE BUT NOT GUARANTEED.

Disclaimer: Sizes and Dimensions are Approximate, Actual May Vary.



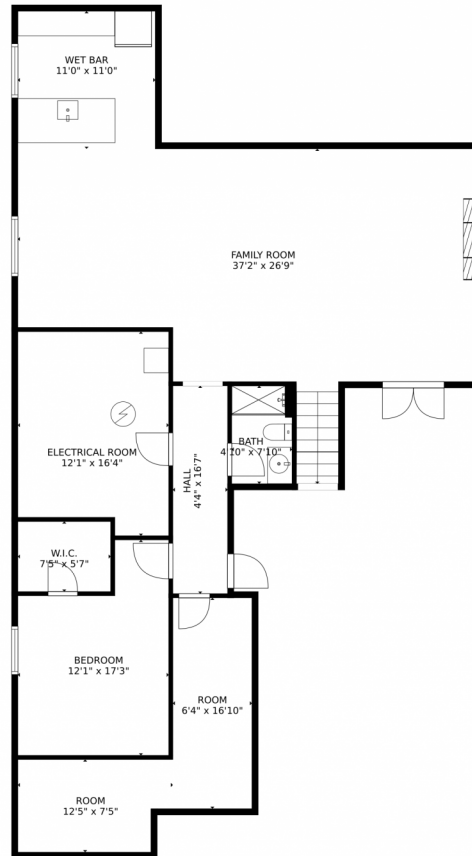
**Nancy Henderson**  
832-279-9504  
nancy@highridgerealty.co  
<http://www.highridgerealty.co>



Scan code  
for more  
property  
details



## 8056 Piney River Avenue, Littleton, CO 80125 — Lower Level



GROSS INTERNAL AREA  
Below Ground: 1150 sq. ft, FLOOR 2: 2039 sq. ft, FLOOR 3: 650 sq. ft  
EXCLUDED AREAS: ELECTRICAL ROOM: 186 sq. ft, ROOM: 192 sq. ft, GARAGE: 394 sq. ft,  
PORCH: 133 sq. ft, COVERED PATIO: 367 sq. ft, OPEN TO BELOW: 545 sq. ft  
TOTAL: 3839 sq. ft  
MEASUREMENTS CALCULATED BY V1Photos.com ARE DEEMED HIGHLY RELIABLE BUT NOT GUARANTEED.



Disclaimer: Sizes and Dimensions are Approximate, Actual May Vary.



**Nancy Henderson**  
832-279-9504  
nancy@highridgerealty.co  
<http://www.highridgerealty.co>





# 8056 Piney River Avenue, Littleton, CO 80125 – All Levels



GROSS INTERNAL AREA  
 Below Ground: 1150 sq. ft, FLOOR 2: 2039 sq. ft, FLOOR 3: 650 sq. ft  
 EXCLUDED AREAS: ELECTRICAL ROOM: 186 sq. ft, ROOM: 192 sq. ft, GARAGE: 394 sq. ft,  
 PORCH: 133 sq. ft, COVERED PATIO: 367 sq. ft, OPEN TO BELOW: 545 sq. ft  
 TOTAL: 3839 sq. ft  
 MEASUREMENTS CALCULATED BY V1Photos.COM ARE DEEMED HIGHLY RELIABLE BUT NOT GUARANTEED.



Disclaimer: Sizes and Dimensions are Approximate, Actual May Vary.



**Nancy Henderson**  
 832-279-9504  
 nancy@highridgerealty.co  
<http://www.highridgerealty.co>



Scan code  
 for more  
 property  
 details

