

14300 East Marina Drive  
Aurora, CO 80014  
**COMMUNITY:** Heather Gardens

MLS # 20234091



Condominium



2200 SQFT



3 Beds



3 Baths



2 Car

## PROPERTY DETAILS

3/3/2 2,200 sq ft 6th floor Heather Gardens Condo  
Overlooks Cherry Creek Open Space, spectacular views.

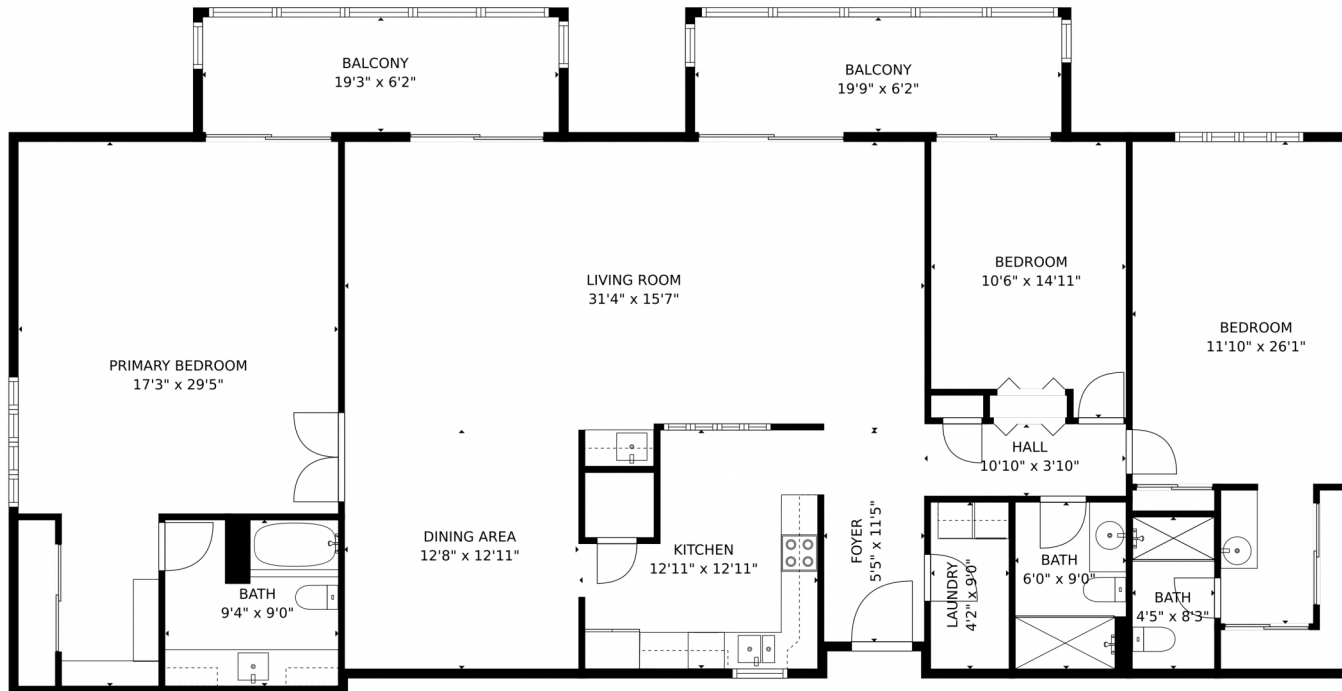
Marie Ramstetter  
970-270-3966  
ramstet@gmail.com



Scan code  
for more  
property  
details



# 14300 East Marina Drive, Aurora, CO 80014 – Main Level



GROSS INTERNAL AREA  
FLOOR 1: 2061 sq. ft  
EXCLUDED AREAS; BALCONY: 244 sq. ft  
TOTAL: 2061 sq. ft  
MEASUREMENTS CALCULATED BY V1Photos.COM ARE DEEMED HIGHLY RELIABLE BUT NOT GUARANTEED.



Disclaimer: Sizes and Dimensions are Approximate, Actual May Vary.

Marie Ramstetter  
970-270-3966  
ramstet@gmail.com

